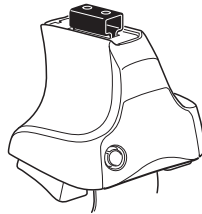
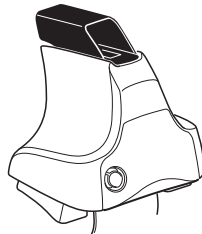
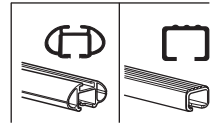


Kit 1725

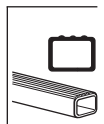
TOYOTA Auris, 5-dr Hatchback, 13–
TOYOTA Corolla, 5-dr Hatchback, 13–



754 Rapid System
480R Rapid Traverse (North America)



480 Traverse (North America)



Max.
60 kg
Max.
132 lbs

THULE
Kit XXXX
instructions
THULE

x1

754 Rapid System
x4

480R Rapid Traverse (North America)
x4

x4

754 Rapid System
480R Rapid Traverse (North America)

x1

480 Traverse (North America)
x4

x4

x2

x2
23 mm

x2
23 mm

x4

x4

x1
17 mm

x2
23 mm

x2

x2

x2

x2

x2

x2

x2

x2

x2

x2

(North America)

170 x2

1269 x2

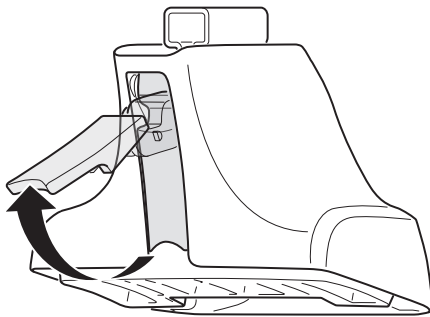
204 x1

206 x1

328 x2

x1

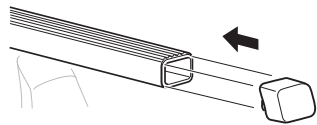
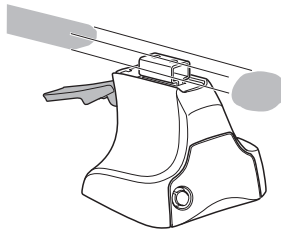
1



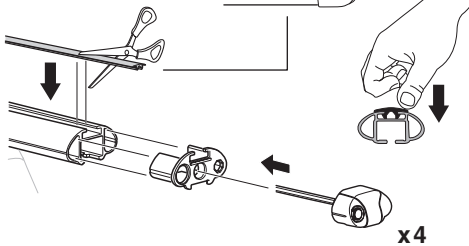
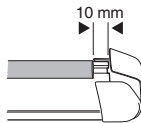
2



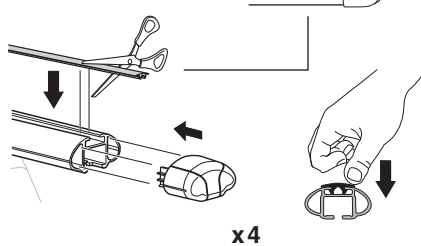
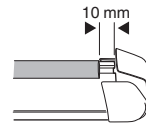
754 Rapid System
480R Rapid Traverse
(North America)



x4



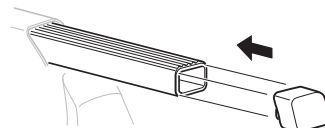
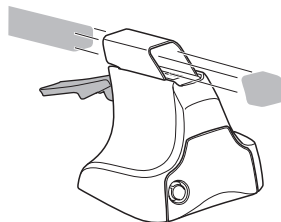
x4



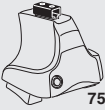
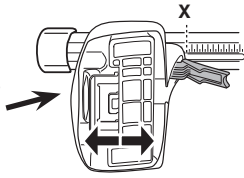
x4



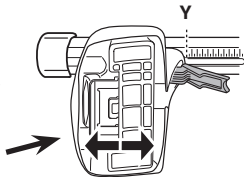
480 Traverse
(North America)



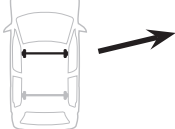
x4

3**754** Rapid System**X**

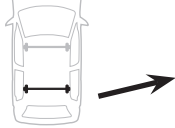
TOYOTA Auris, 5-dr Hatchback, 13-	28
TOYOTA Corolla, 5-dr Hatchback, 13-	28

**Y**

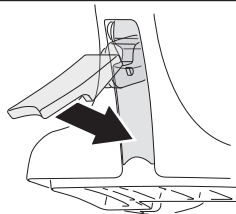
TOYOTA Auris, 5-dr Hatchback, 13-	24,5
TOYOTA Corolla, 5-dr Hatchback, 13-	24,5

3**480R** Rapid Traverse**480** Traverse**(North America)****X inch** **X mm**

TOYOTA Auris, 5-dr Hatchback, 13-	36 5/8"	931 mm
TOYOTA Corolla, 5-dr Hatchback, 13-	36 5/8"	931 mm

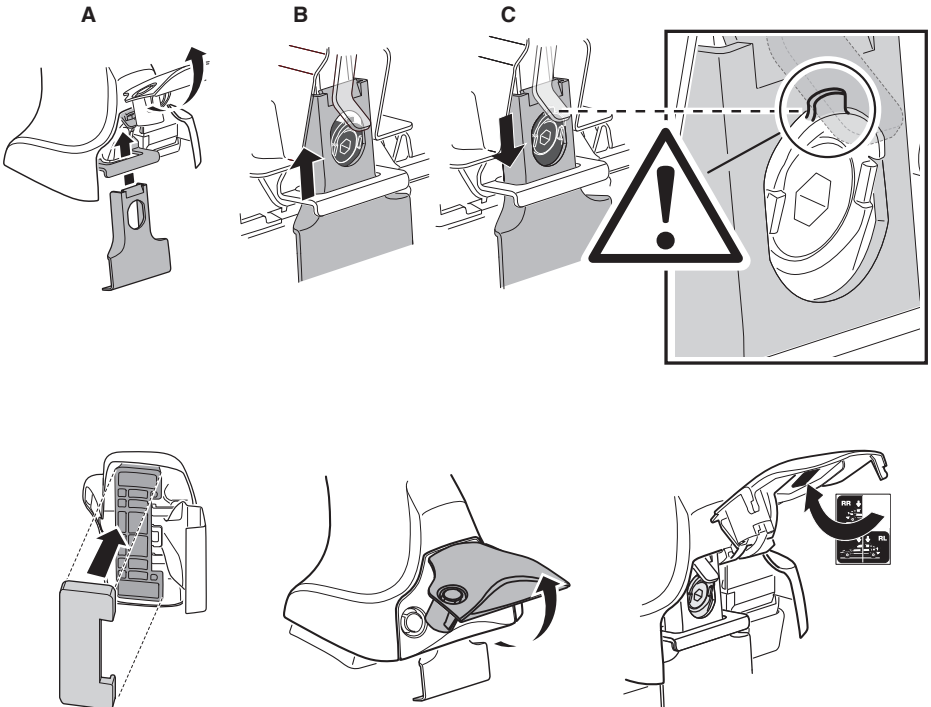
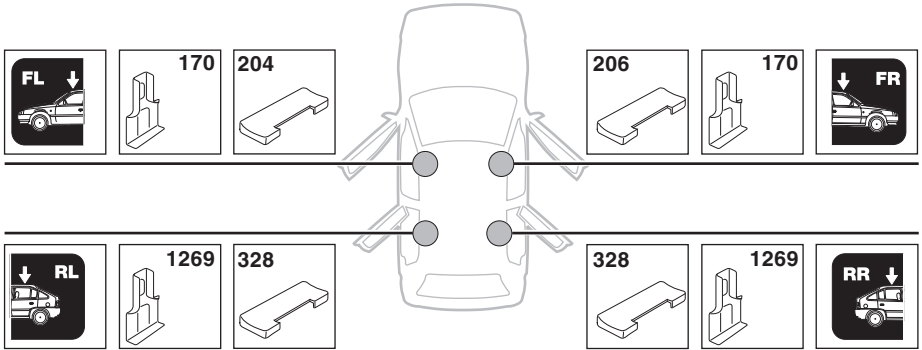
**Y inch** **Y mm**

TOYOTA Auris, 5-dr Hatchback, 13-	35 1/4"	896 mm
TOYOTA Corolla, 5-dr Hatchback, 13-	35 1/4"	896 mm

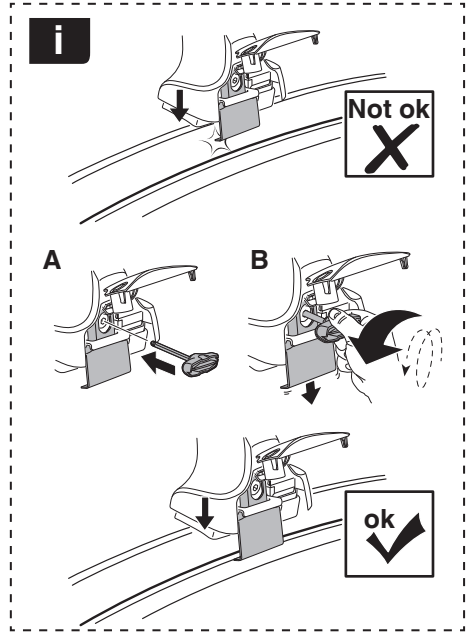
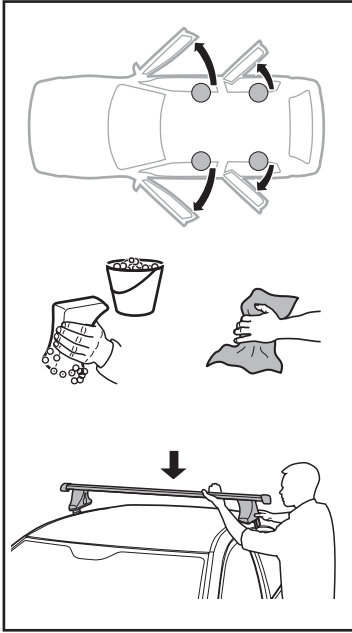
4

5

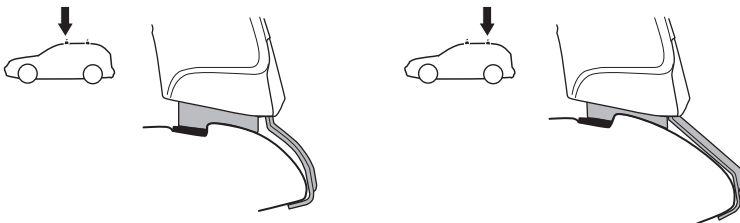
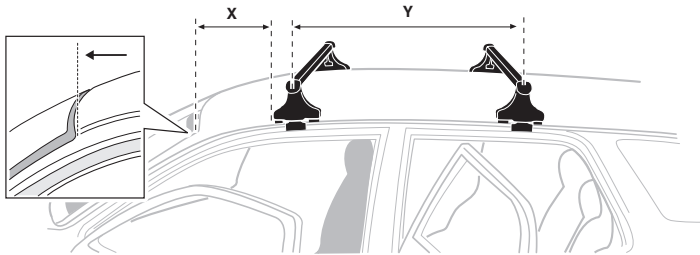
TOYOTA Auris, 5-dr Hatchback, 13-
TOYOTA Corolla, 5-dr Hatchback, 13-



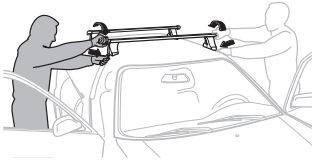
6



	X mm	Y mm	X inch	Y inch
TOYOTA Auris, 5-dr Hatchback, 13-	180 mm	750 mm	7 1/8"	29 1/2"
TOYOTA Corolla, 5-dr Hatchback, 13-	180 mm	750 mm	7 1/8"	29 1/2"



7



GB/US Tighten alternately
 D Die Schrauben abwechselnd anziehen
 F Serrer alternativement chaque côté
 NL Afwisselend aan de linker- en de rechterkant aandraaien
 I Alternare il serraggio delle viti
 E Apretar alternativamente
 PT Aperte alternadamente
 S Dra åt växelvis
 FIN Kierrä vuorotellen
 EST Pinguldage vaheldumisi
 LAT Pieļieciet pamišus
 LIT Užsukinėkite pakaitomis
 PL Śruby dokręcaj naprzemiennie
 RU Затягивайте попеременно

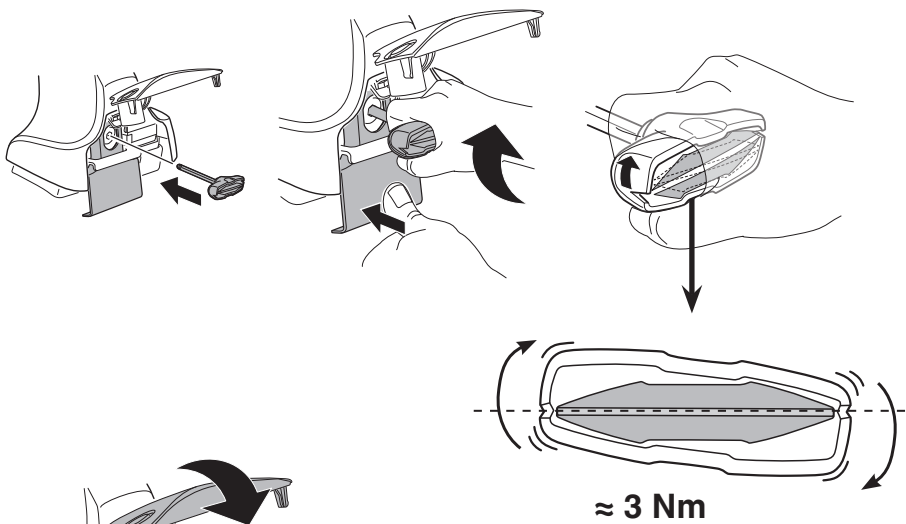
CZ Pokręťta bagażnika dokręcaj dokręcaj naprzemiennie.
 SK Dofahajte striedavo
 SLO Privijajte izmenično.
 HR Naizmjerno zategnite
 HU Egymástól függetlenül szorítandó
 GR Σφιγγείτε εναλλάξ
 TR Dönüşümlü sıkın

中文 交替拧紧

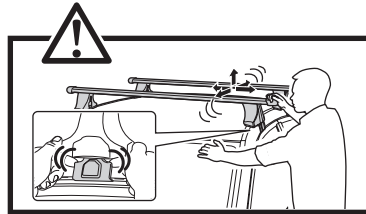
한국어 번갈아 가며 조이십시오.

日本語 交互に締め付けてください。

ไทย ชันในแบบสลับ



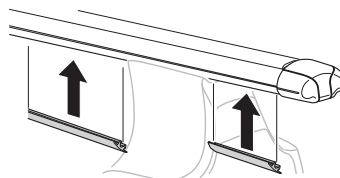
≈ 3 Nm

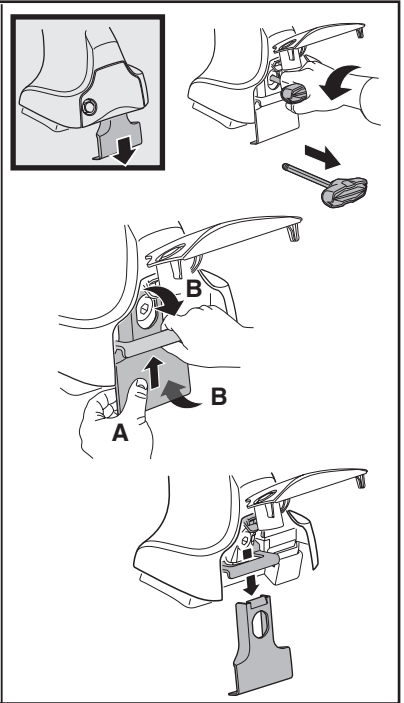
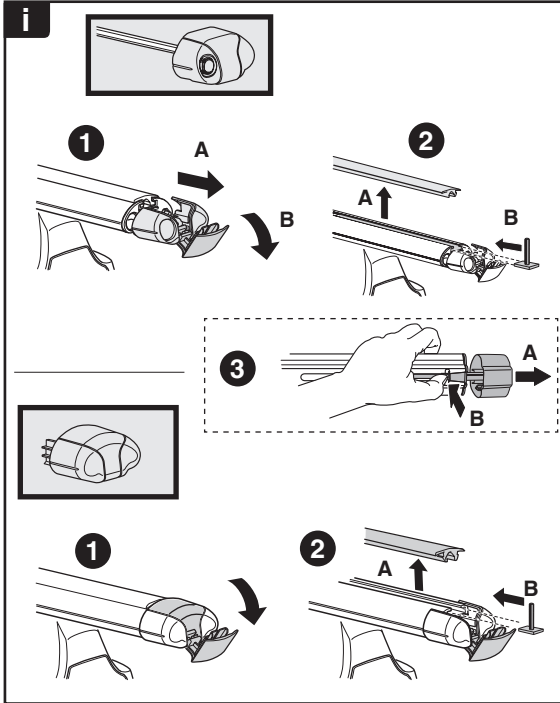
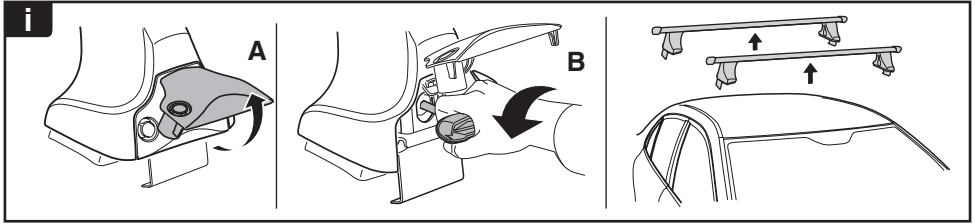


8

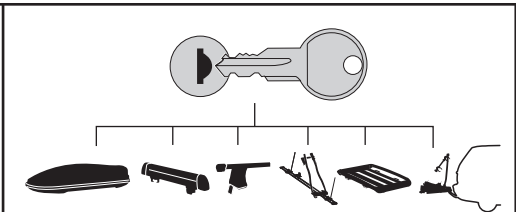


x1
17 mm

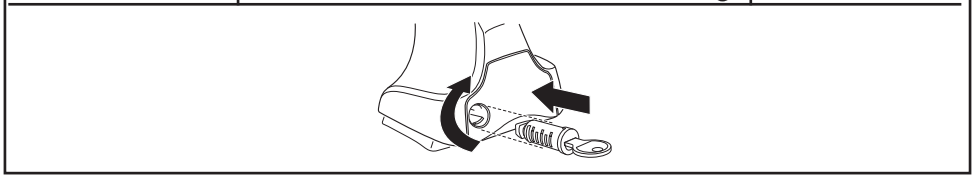




THULE
SWEDEN
**ONE
KEY
SYSTEM**



		(x4)
		(x6)
		(x8)
NA		(x10)
EUR		(x12)
ASIA		



WW ▶ Thule Sweden AB, Box 69, 330 33 Hillerstorp, SWEDEN
NA ▶ Thule Inc., 42 Silvermine Road, Seymour, Connecticut 06483, USA

info@thule.com
customer.service@thule.com

www.thule.com