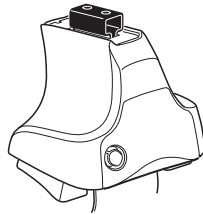


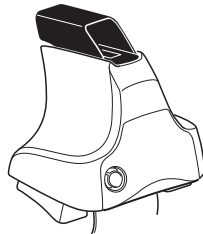
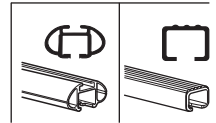
Kit 1718

HONDA Civic, 4-dr Sedan, *13-

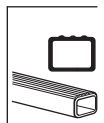
*North America



754 Rapid System
480R Rapid Traverse (North America)



480 Traverse (North America)

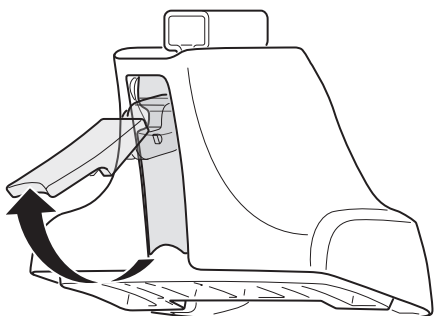


- 754 Rapid System: x1 (Ruler), x4 (Rapid System), x4 (480R Rapid Traverse (North America)), x4 (Screwdriver)
- 480R Rapid Traverse (North America): x1 (Ruler), x4 (Traverse (North America)), x4 (Screwdriver)

- Hardware: x2 (Bracket), x2 (23 mm Bolt), x2 (23 mm Nut), x4 (Washer), x4 (Locking Bolt)
- (North America): x1 (17 mm Bolt), x2 (23 mm Nut), x2 (23 mm Bolt), x2 (23 mm Nut), x2 (Locking Bolt)

- 52 x2
- 155 x2
- 78 x1
- 79 x1
- 331 x1
- 332 x1
- FR & RL x1

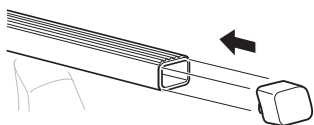
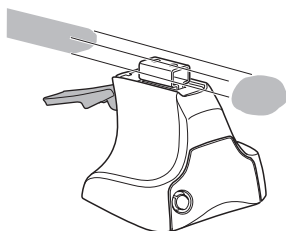
1



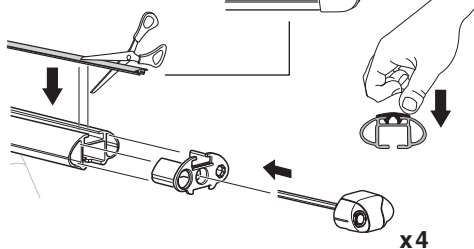
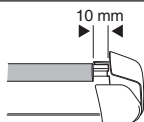
2



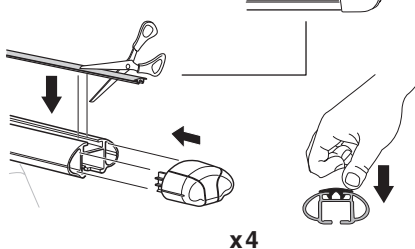
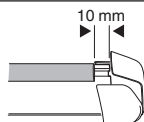
754 Rapid System
480R Rapid Traverse
(North America)



x4



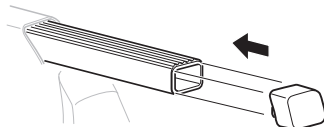
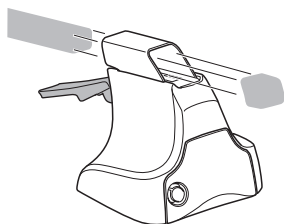
x4



x4

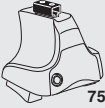


480 Traverse
(North America)

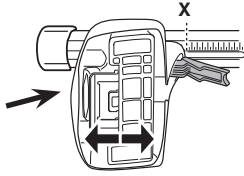


x4

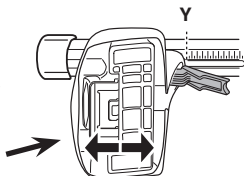
3



754 Rapid System



	X
HONDA Civic, 4-dr Sedan, *13-	41



	Y
HONDA Civic, 4-dr Sedan, *13-	38

3



480R Rapid Traverse



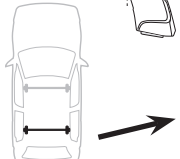
480 Traverse



(North America)

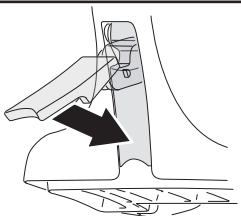


	X inch	X mm
HONDA Civic, 4-dr Sedan, *13-	41 3/4"	1061 mm



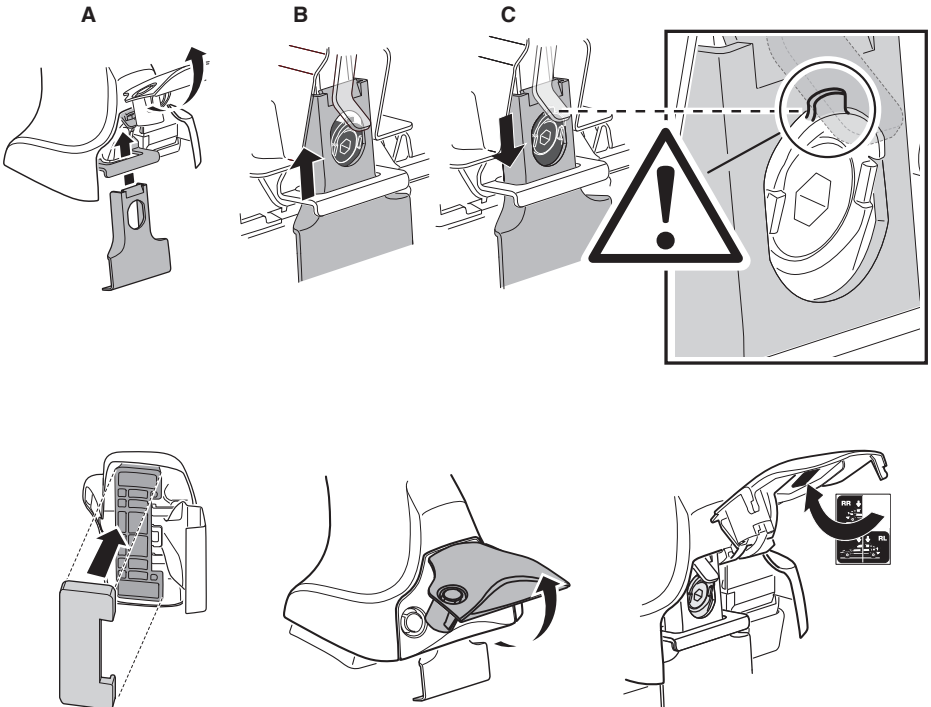
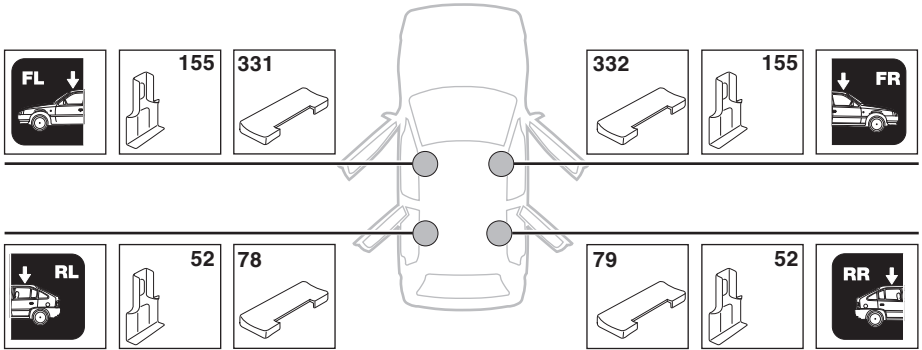
	Y inch	Y mm
HONDA Civic, 4-dr Sedan, *13-	40 5/8"	1031 mm

4

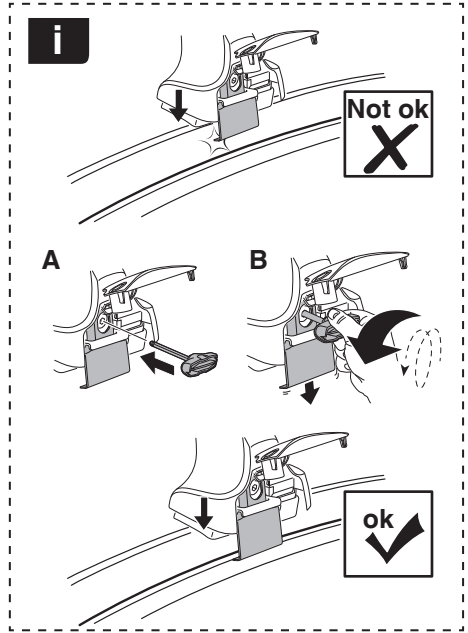
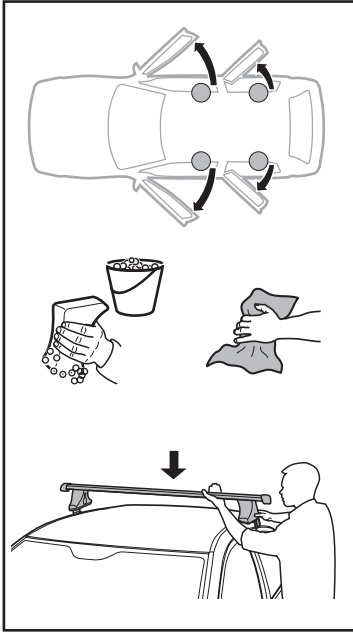


5

HONDA Civic, 4-dr Sedan, *13-

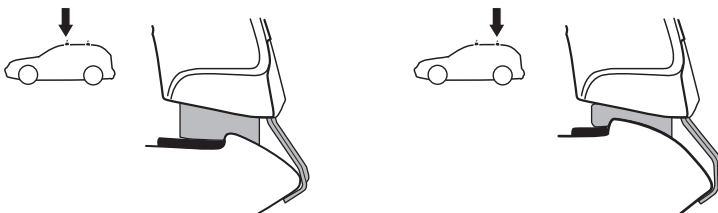
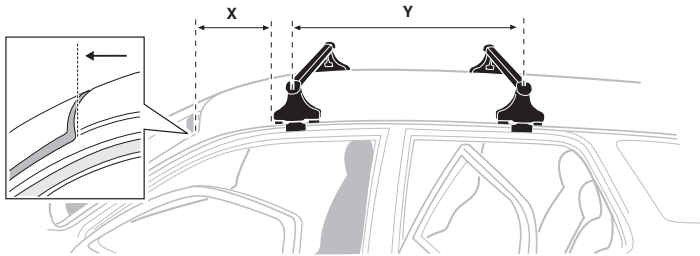


6

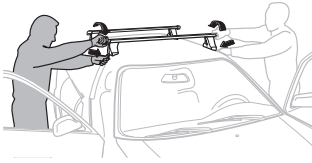


HONDA Civic, 4-dr Sedan, *13-

X mm	Y mm	X inch	Y inch
229 mm	679 mm	9"	26 3/4"



7



GB/US Tighten alternately
 D Die Schrauben abwechselnd anziehen
 F Serrer alternativement chaque côté
 NL Afwisselend aan de linker- en de rechterkant aandraaien
 I Alternare il serraggio delle viti
 E Apretar alternativamente
 PT Aperte alternadamente
 S Dra åt växelvis
 FIN Kierrä vuorotellen
 EST Pinguldage vaheldumisi
 LAT Pievelciēt pamīšus
 LIT Užsukinėkite pakaitomis
 PL Śruby dokręcaj naprzemiennie
 RU Затягивайте попеременно

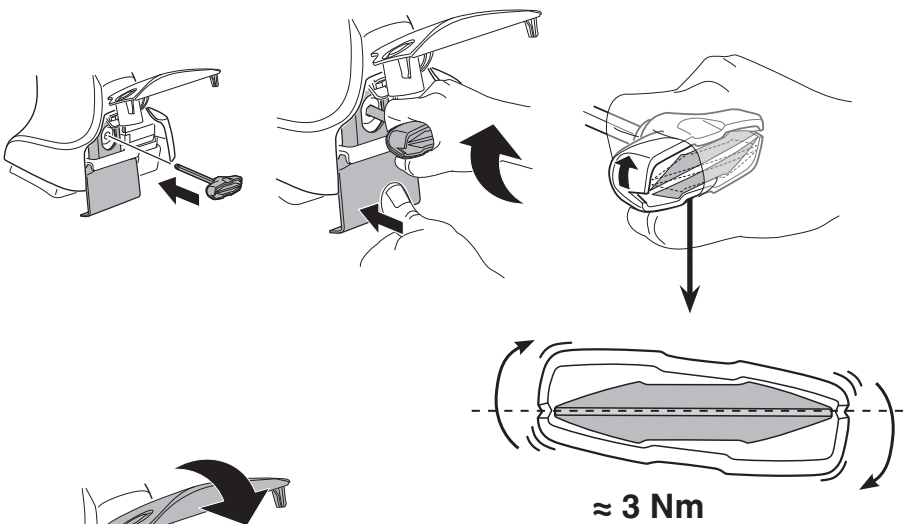
CZ Pokręťta bagażnika dokręcaj dokręcaj naprzemiennie.
 SK Dofahajte striedavo
 SLO Privijajte izmenično.
 HR Naizmjenočno zategnite
 HU Egymástól függetlenül szorítandó
 GR Σφιγίγες εναλλάξ
 TR Dönüşümlü sıkın

中文 交替拧紧

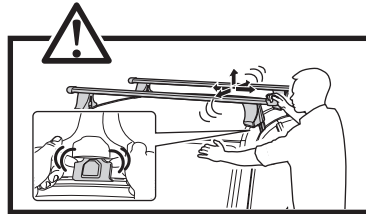
한국어 번갈아 가며 조이십시오.

日本語 交互に締め付けてください。

ไทย ชันในแบบสลับ



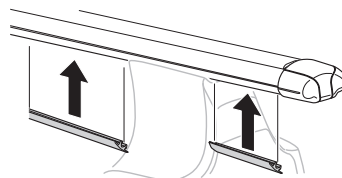
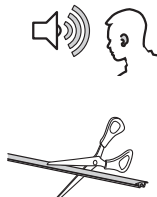
≈ 3 Nm

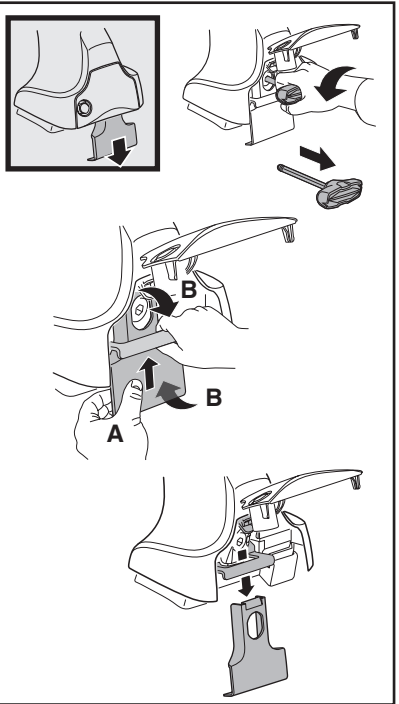
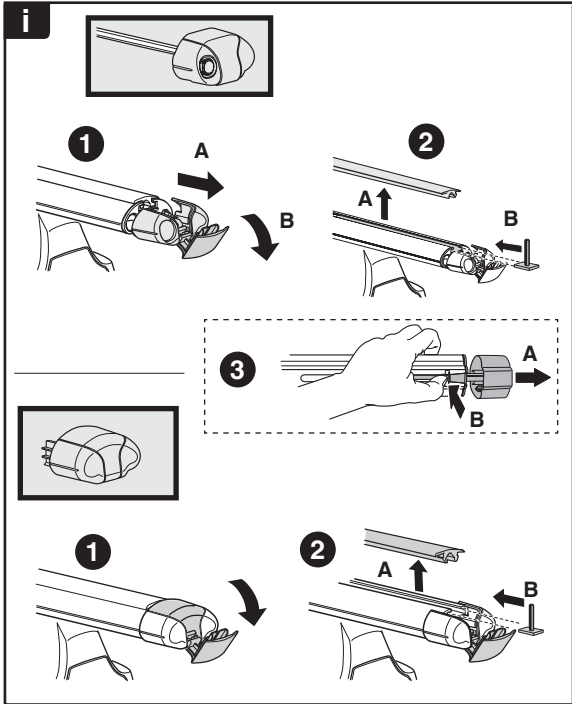
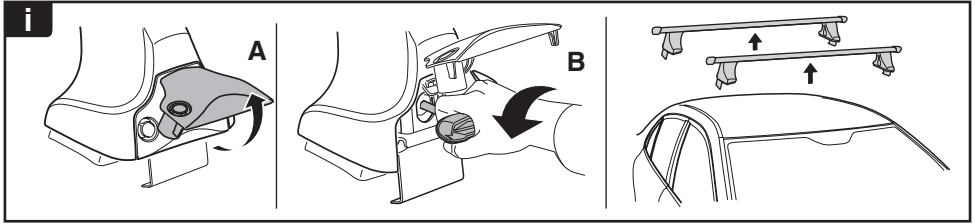


8

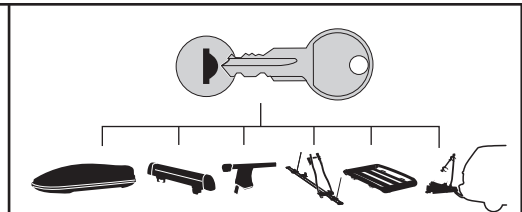


x1
17 mm

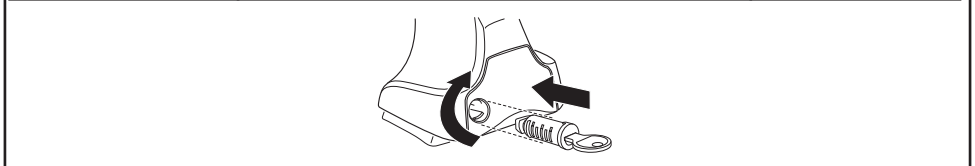




THULE
SWEDEN
**ONE
KEY
SYSTEM**



		(x4)
		(x6)
		(x8)
NA		(x10)
EUR		(x12)
ASIA		



WW ▶ Thule Sweden AB, Box 69, 330 33 Hillerstorp, SWEDEN
NA ▶ Thule Inc., 42 Silvermine Road, Seymour, Connecticut 06483, USA

info@thule.com
customer.service@thule.com

www.thule.com