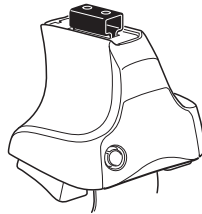
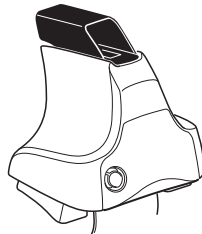
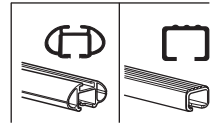


# Kit 1713

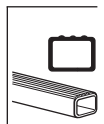
**SKODA Rapid**, 5-dr Hatchback, 13-  
**SEAT Toledo**, 5-dr Hatchback, 13-



**754** Rapid System  
**480R** Rapid Traverse (North America)



**480** Traverse (North America)



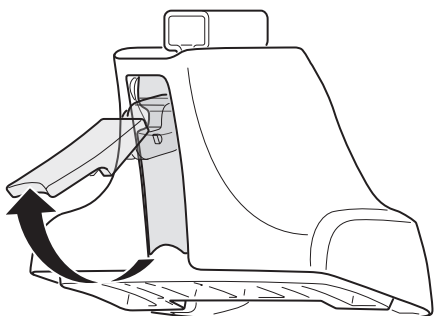
- 754 Rapid System: x1 (box), x4 (cubes), x4 (754 Rapid Traverse (North America) units), x4 (screws)
- 480R Rapid Traverse (North America): x1 (ruler), x4 (480R Rapid Traverse (North America) units), x4 (screws), x4 (cubes)
- 480 Traverse (North America): x1 (ruler), x4 (480 Traverse (North America) units), x4 (screws), x4 (cubes)

- 23 mm bars: x2
- 23 mm hardware: x2
- 17 mm hardware: x1
- 23 mm hardware: x2
- Hardware: x4
- Hardware: x4
- Hardware: x2
- Hardware: x2
- Hardware: x2
- Hardware: x2
- Hardware: x2
- Hardware: x2

(North America)

- Bracket 1251: x4
- Bracket 217: x2
- Bracket 363: x1
- Bracket 378: x1
- Label: x1

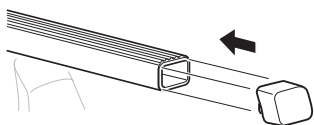
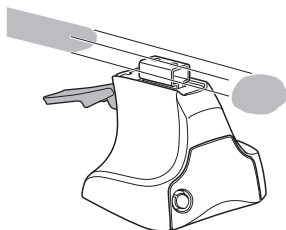
1



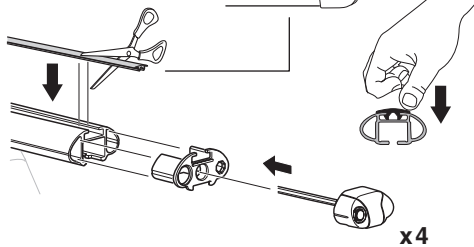
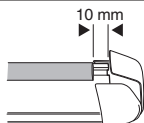
2



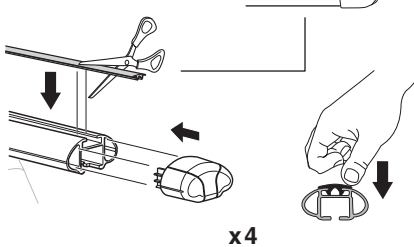
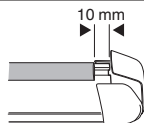
754 Rapid System  
480R Rapid Traverse  
(North America)



x4



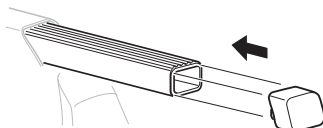
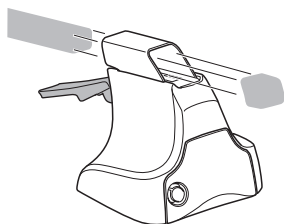
x4



x4

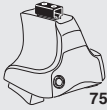


480 Traverse  
(North America)

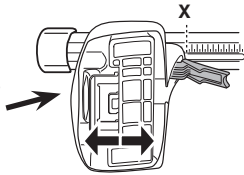


x4

**3**

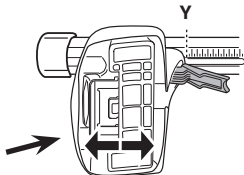


**754 Rapid System**



**X**

<b>SKODA Rapid, 5-dr Hatchback, 13-</b>	<b>41</b>
<b>SEAT Toledo, 5-dr Hatchback, 13-</b>	<b>41</b>



**Y**

<b>SKODA Rapid, 5-dr Hatchback, 13-</b>	<b>38,5</b>
<b>SEAT Toledo, 5-dr Hatchback, 13-</b>	<b>38,5</b>

**3**

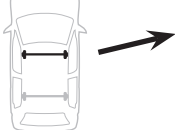


**480R Rapid Traverse**



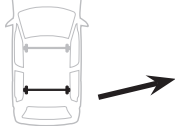
**480 Traverse**

**(North America)**



**X inch      X mm**

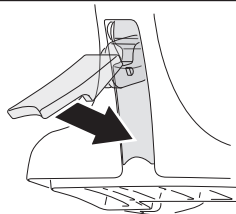
<b>SKODA Rapid, 5-dr Hatchback, 13-</b>	<b>41 3/4"</b>	<b>1061 mm</b>
<b>SEAT Toledo, 5-dr Hatchback, 13-</b>	<b>41 3/4"</b>	<b>1061 mm</b>



**Y inch      Y mm**

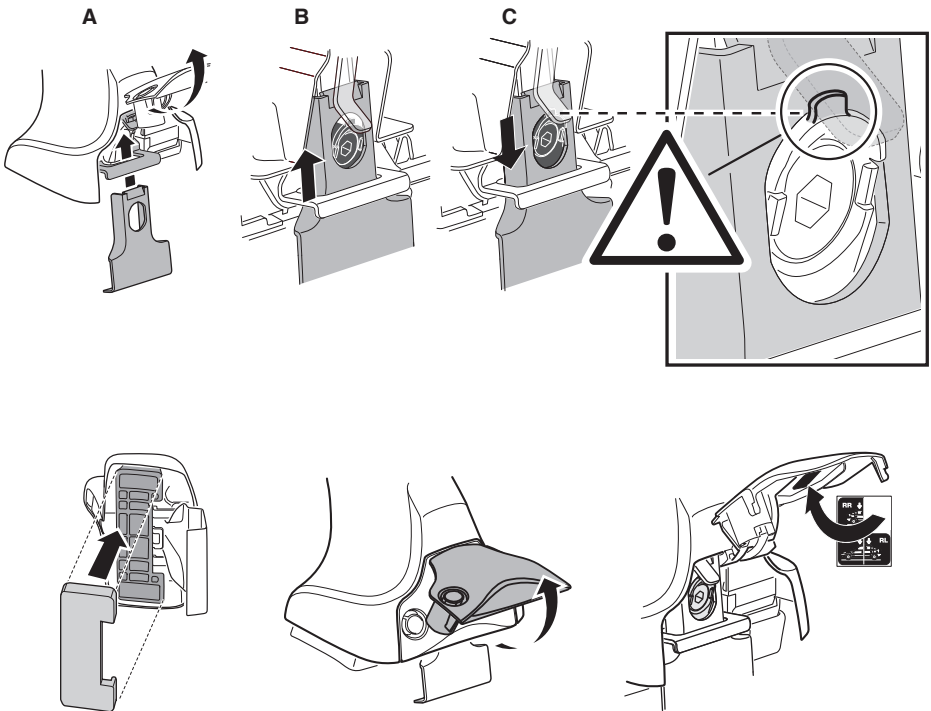
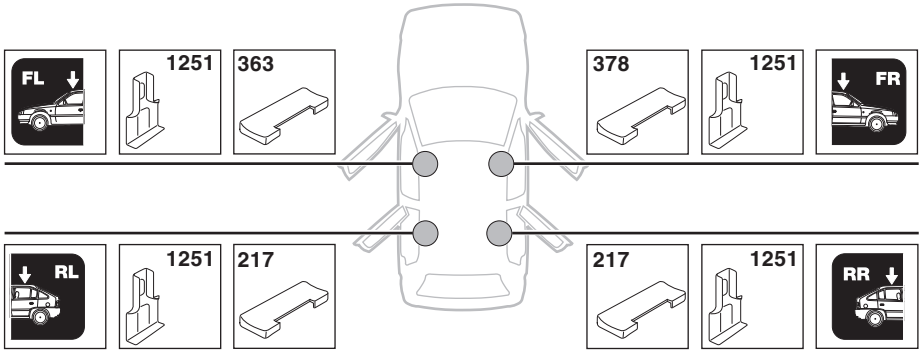
<b>SKODA Rapid, 5-dr Hatchback, 13-</b>	<b>40 3/4"</b>	<b>1036 mm</b>
<b>SEAT Toledo, 5-dr Hatchback, 13-</b>	<b>40 3/4"</b>	<b>1036 mm</b>

**4**

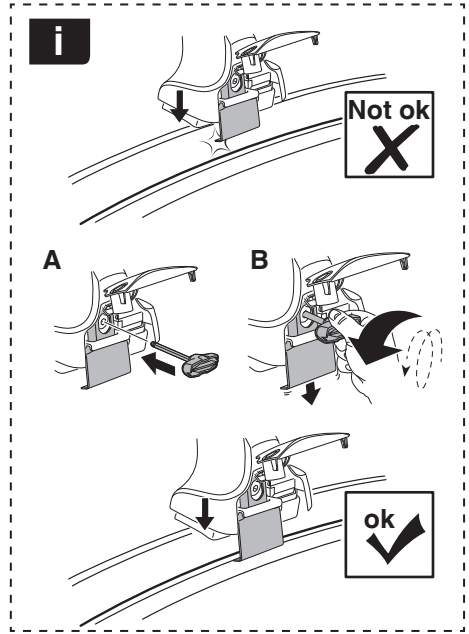
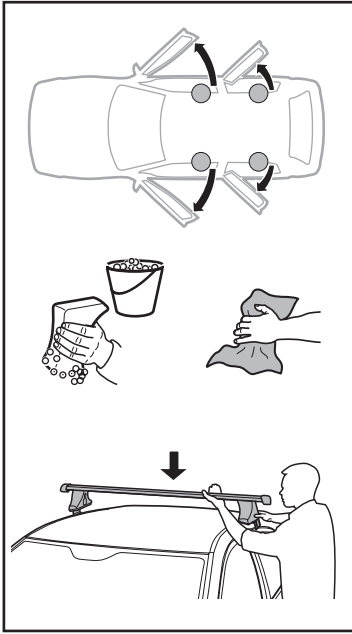


# 5

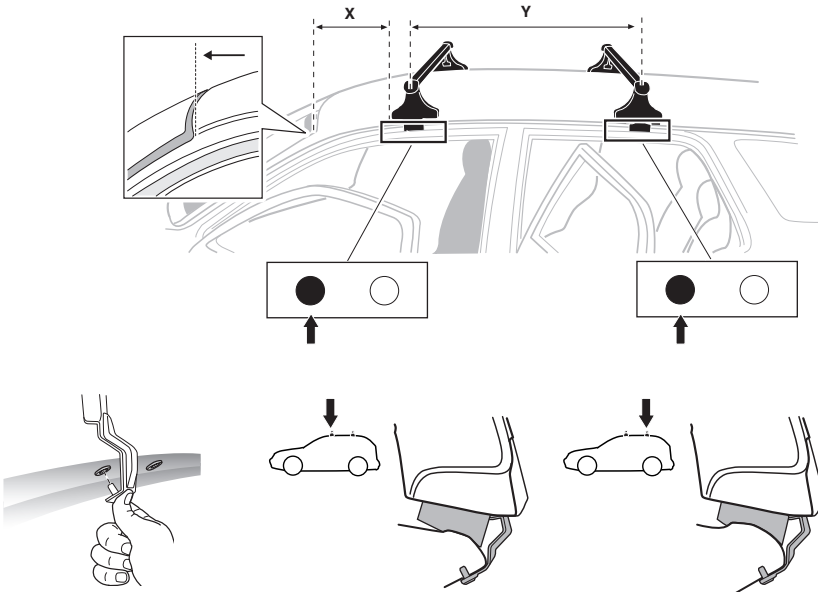
**SKODA Rapid, 5-dr Hatchback, 13–**  
**SEAT Toledo, 5-dr Hatchback, 13–**



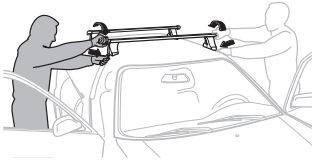
6



	X mm	Y mm	X inch	Y inch
<b>SKODA Rapid, 5-dr Hatchback, 13-</b>	175 mm	715 mm	6 <sup>7</sup> / <sub>8</sub> "	28 <sup>1</sup> / <sub>8</sub> "
<b>SEAT Toledo, 5-dr Hatchback, 13-</b>	175 mm	715 mm	6 <sup>7</sup> / <sub>8</sub> "	28 <sup>1</sup> / <sub>8</sub> "



7



GB/US Tighten alternately  
 D Die Schrauben abwechselnd anziehen  
 F Serrer alternativement chaque côté  
 NL Afwisselend aan de linker- en de rechterkant aandraaien  
 I Alternare il serraggio delle viti  
 E Apretar alternativamente  
 PT Aperte alternadamente  
 S Dra åt växelvis  
 FIN Kierrä vuorotellen  
 EST Pinguldage vaheldumisi  
 LAT Pieļieciet pamišus  
 LIT Užsukinėkite pakaitomis  
 PL Śruby dokręcaj naprzemiennie  
 RU Затягивайте попеременно

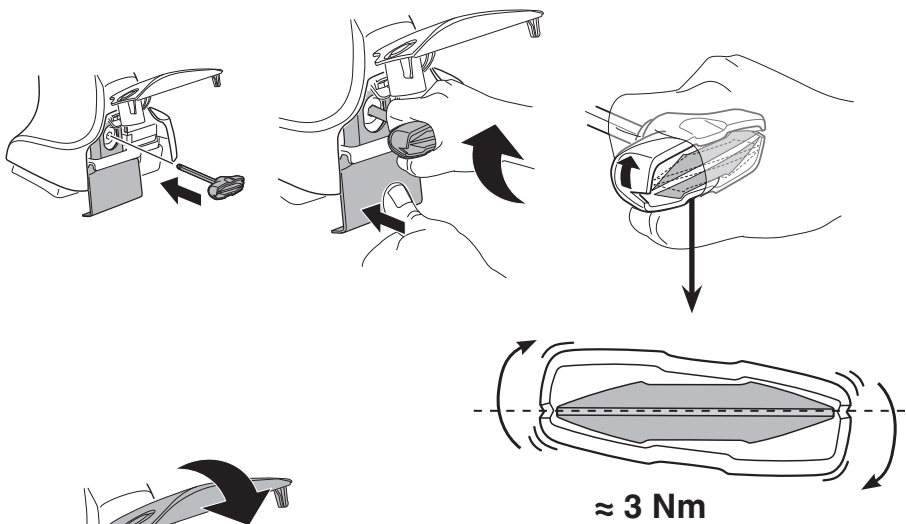
CZ Pokręťta bagażnika dokręcaj dokręcaj naprzemiennie.  
 SK Dofahajte striedavo  
 SLO Privijajte izmenično.  
 HR Naizmjerno zategnite  
 HU Egymástól függetlenül szorítandó  
 GR Σφιγγείτε εναλλάξ  
 TR Dönüşümlü sıkın

中文 交替拧紧

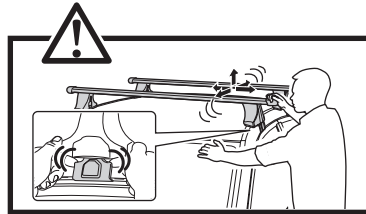
한국어 번갈아 가며 조이십시오.

日本語 交互に締め付けてください。

ไทย ชันในแบบสลับ



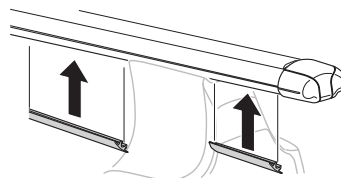
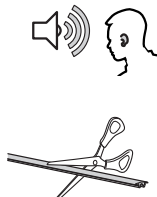
≈ 3 Nm

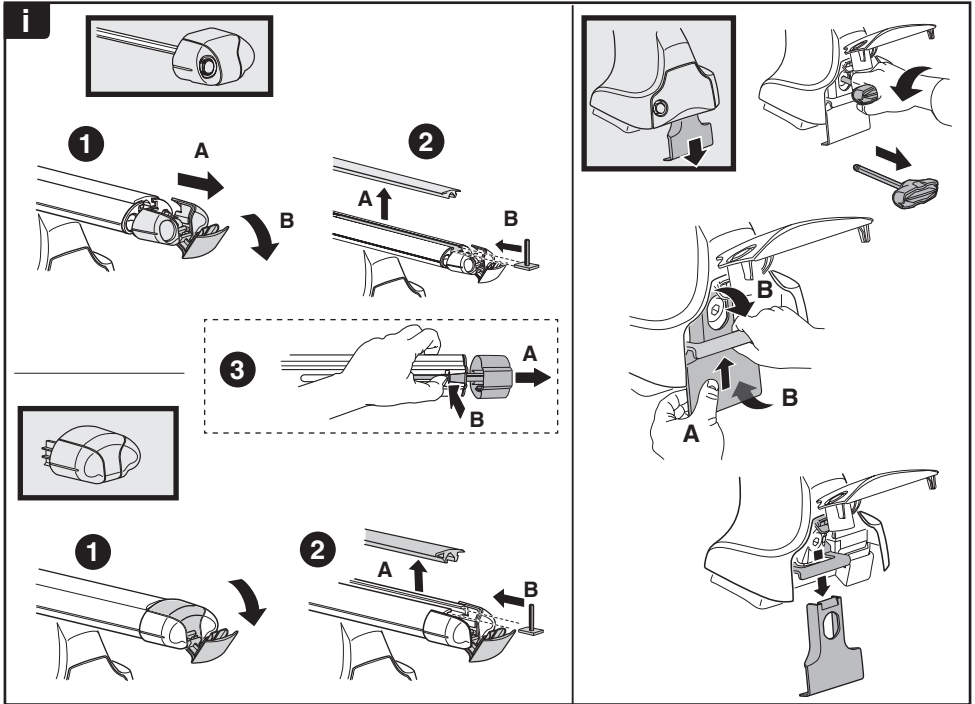
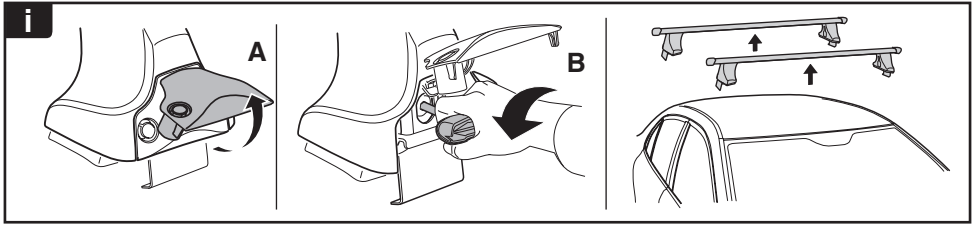


8



x1  
17 mm





**THULE**  
SWEDEN

**ONE  
KEY  
SYSTEM**

- 544** (x4)
- 596** (x6)
- 588** (x8)
- 510** (x10)
- 452** (x12)

NA  
EUR  
ASIA