

Kit 1696

MITSUBISHI Mirage, 5-dr Hatchback, 12-



754 Rapid System
480R Rapid Traverse (North America)



480 Traverse (North America)



xx kg
 xx lbs + 7 kg
 15,4 lbs =
**Max.
40 kg**
**Max.
88 lbs**

80 km/h 50 Mph
 130 km/h 80 Mph
 40 km/h 25 Mph
**km/h
Mph**

+ **Kit XXXX**

x1

x4
754 Rapid System

x4
480R Rapid Traverse (North America)

x4 **x4**

754 Rapid System
480R Rapid Traverse (North America)

x1 **x4** **x4**

x4 **x4**

480 Traverse (North America)

x2 **x2** **x2** **x1** **x2** **x2** **x2** **x2**

x2 **x2** **x2** **x2** **x2** **x2**

x2 **x2** **x2** **x2** **x2** **x2**

x4 **x2** **x2** **x2** **x2**

x4 **x4**

(North America)

1168 x2 **1169 x2** **191 x1** **192 x1** **364 x1** **365 x1** **x1**

1



2



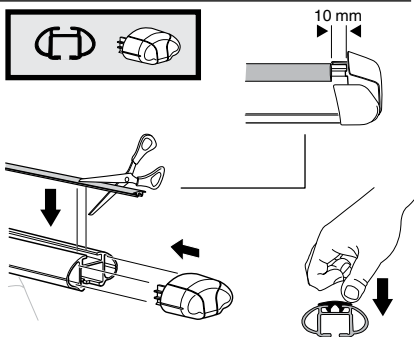
754 Rapid System
480R Rapid Traverse
(North America)



x4



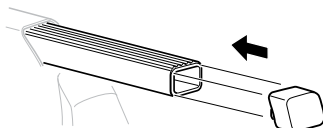
x4



x4



480 Traverse
(North America)



x4

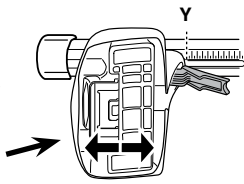
3



754 Rapid System



	X
MITSUBISHI Mirage, 5-dr Hatchback, 12-	40



	Y
MITSUBISHI Mirage, 5-dr Hatchback, 12-	32,5

3

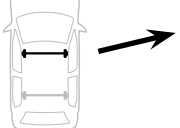


480R Rapid Traverse

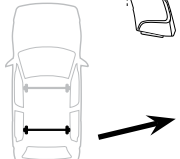
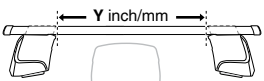


480 Traverse

(North America)

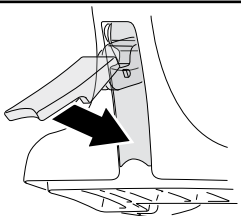


	X inch	X mm
MITSUBISHI Mirage, 5-dr Hatchback, 12-	41 3/8"	1051 mm



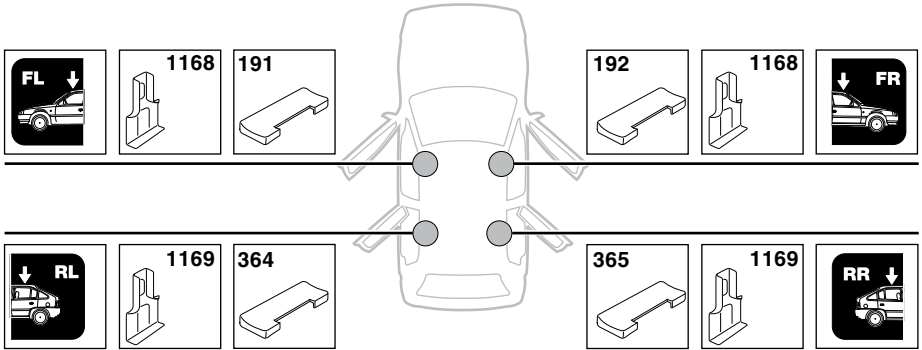
	Y inch	Y mm
MITSUBISHI Mirage, 5-dr Hatchback, 12-	38 3/8"	976 mm

4

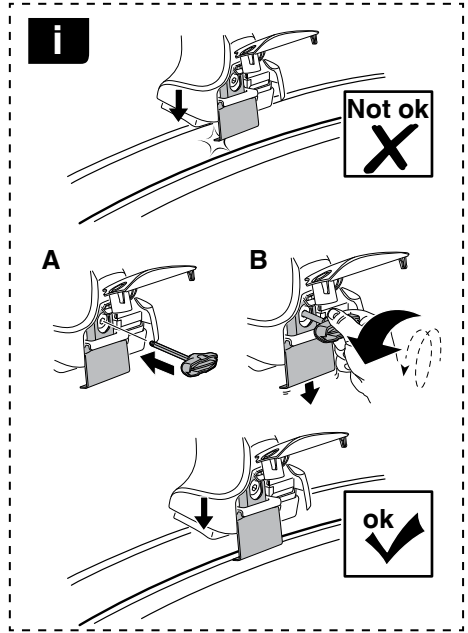


5

MITSUBISHI Mirage, 5-dr Hatchback, 12-

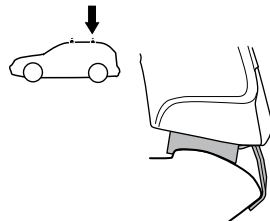
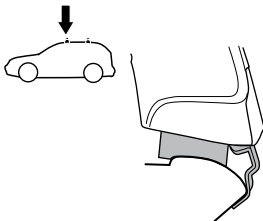
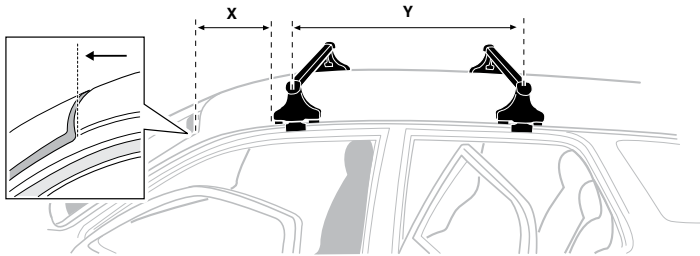


6



MITSUBISHI Mirage, 5-dr Hatchback, 12-

X mm	Y mm	X inch	Y inch
195 mm	720 mm	7 ⁵ / ₈ "	28 ³ / ₈ "



7



GB/US	Tighten alternately
D	Die Schrauben abwechselnd anziehen
F	Serrer alternativement chaque côté
NL	Afwisselend aan de linker- en de rechterkant aandraaien
I	Alternare il serraggio delle viti
E	Apertar alternativamente
PT	Aperte alternadamente
S	Dra åt växelvis
FIN	Kierrä vuorotellen
EST	Pinguldage vaheldumisi
LAT	Pielveiciet pamišus
LIT	Užsukinėkite pakaitomis
PL	Śruby dokręcaj naprzemiennie
RU	Загряивайте попеременно

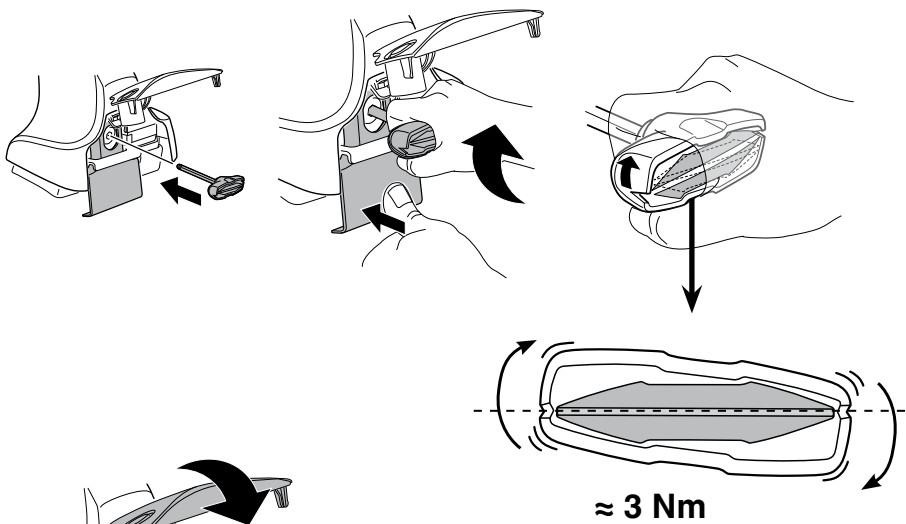
CZ	Pokręřta багаžnika dokręcaj naprzemiennie.
SK	Dofahajte striedavo
SLO	Privijajte izmenično.
HR	Naizmjenično zategnite
HU	Egymástól függetlenül szorítandó
GR	Σφιγίγτες εναλλάξ
TR	Dönüşümlü sıkın

中文 交替拧紧

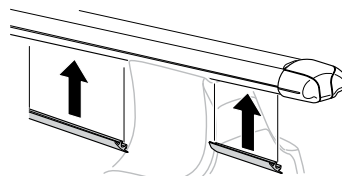
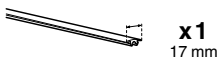
한국어 번갈아 가며 조이십시오.

日本語 交互に締め付けてください。

ไทย ชันในแบบสลับ



8





THULE
SWEDEN
**ONE
KEY
SYSTEM**



		(x4)
		(x6)
		(x8)
NA		(x10)
EUR		(x12)
ASIA		



WW ▶ Thule Sweden AB, Box 69, 330 33 Hillerstorp, SWEDEN
NA ▶ Thule Inc., 42 Silvermine Road, Seymour, Connecticut 06483, USA

info@thule.com
customer.service@thule.com

www.thule.com