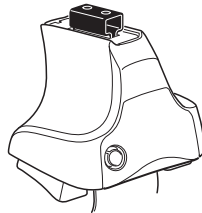
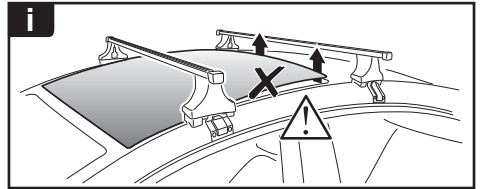
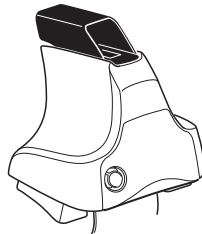
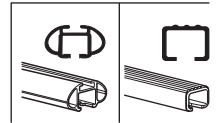


Kit 1693

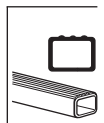
KIA Ceed, 5-dr Hatchback, 12- (With glassroof)
KIA Cerato, 5-dr Hatchback, 13-



754 Rapid System
480R Rapid Traverse (North America)



480 Traverse (North America)

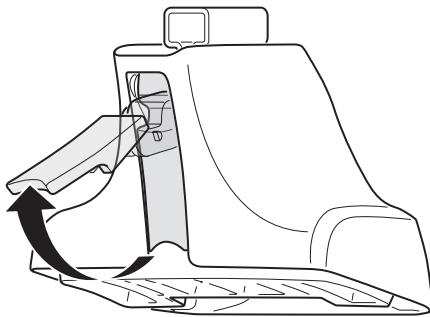


- 754 Rapid System: x1 (box), x4 (cubes), x4 (754 Rapid Traverse), x4 (screws)
- 480R Rapid Traverse (North America): x1 (ruler), x4 (480R Rapid Traverse), x4 (screws), x4 (cubes)
- 480 Traverse (North America): x1 (ruler), x4 (480 Traverse), x4 (screws), x4 (cubes)

- Bar: x2
- Hardware: x2 (23 mm), x2 (23 mm), x4 (screws), x4 (nuts)
- Hardware: x1 (17 mm), x2 (23 mm), x2 (23 mm), x4 (nuts)
- (North America): x2 (23 mm), x2 (23 mm), x2 (23 mm), x2 (bar), x2 (bar)

- Bracket: 368 x2
- Bracket: 798 x2
- Plate: 07 x2
- Plate: 249 x1
- Plate: 250 x1
- Diagram: x1

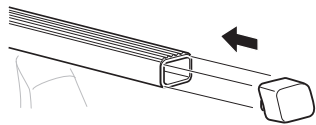
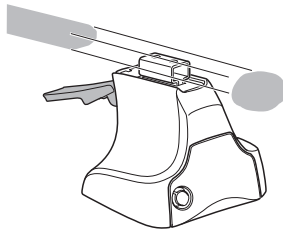
1



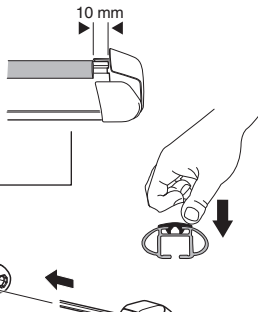
2



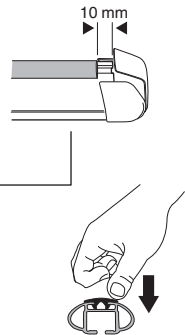
754 Rapid System
480R Rapid Traverse
(North America)



x4



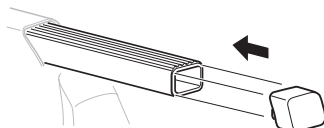
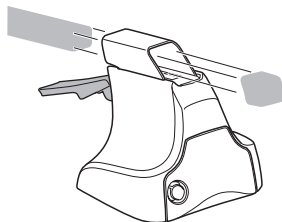
x4



x4

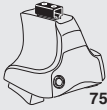


480 Traverse
(North America)

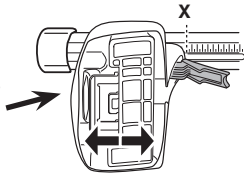


x4

3

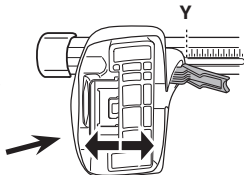


754 Rapid System



X

KIA Ceed, 5-dr Hatchback, 12- (With glassroof)	36,5
KIA Cerato, 5-dr Hatchback, 13-	41,5



Y

KIA Ceed, 5-dr Hatchback, 12- (With glassroof)	30
KIA Cerato, 5-dr Hatchback, 13-	37

3



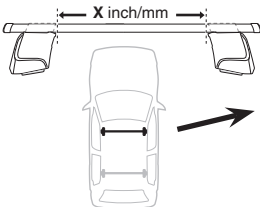
480R Rapid Traverse



480 Traverse

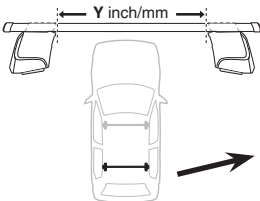


(North America)



X inch X mm

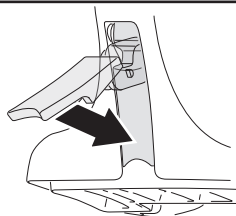
KIA Ceed, 5-dr Hatchback, 12- (With glassroof)	40"	1016 mm
KIA Cerato, 5-dr Hatchback, 13-	42"	1066 mm



Y inch Y mm

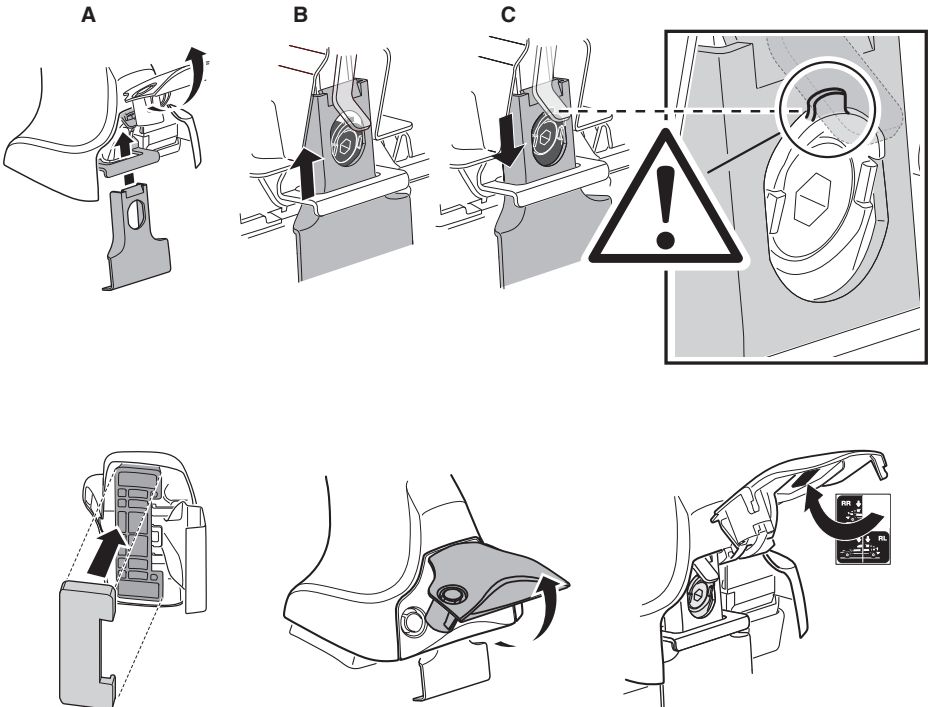
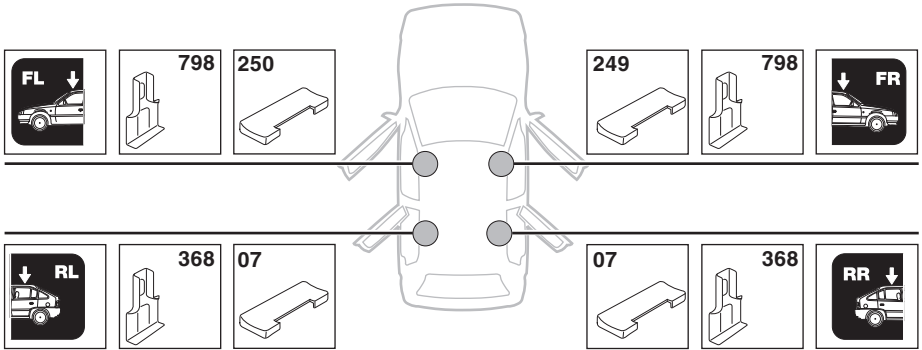
KIA Ceed, 5-dr Hatchback, 12- (With glassroof)	37 1/2"	951 mm
KIA Cerato, 5-dr Hatchback, 13-	40 1/4"	1021 mm

4

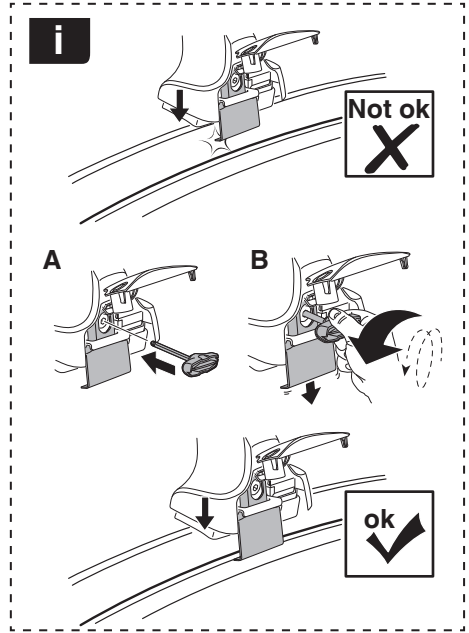
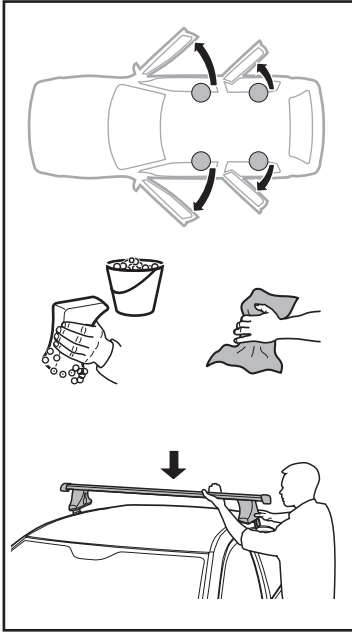


5

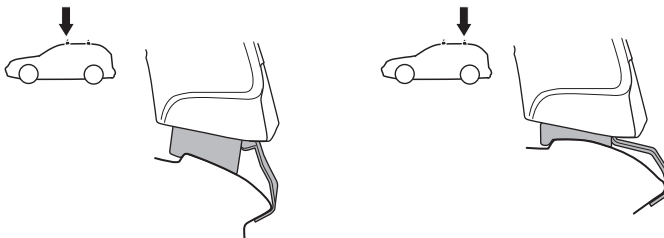
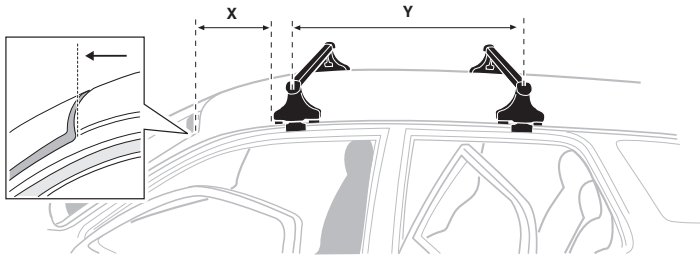
KIA Ceed, 5-dr Hatchback, 12- (With glassroof)
KIA Cerato, 5-dr Hatchback, 13-



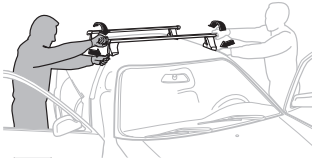
6



	X mm	Y mm	X inch	Y inch
KIA Ceed, 5-dr Hatchback, 12- (With glassroof)	300 mm	700 mm	11 3/4"	27 1/2"
KIA Cerato, 5-dr Hatchback, 13-	300 mm	700 mm	11 3/4"	27 1/2"



7



GB/US Tighten alternately
 D Die Schrauben abwechselnd anziehen
 F Serrer alternativement chaque côté
 NL Afwisselend aan de linker- en de rechterkant aandraaien
 I Alternare il serraggio delle viti
 E Apretar alternativamente
 PT Aperte alternadamente
 S Dra åt växelvis
 FIN Kierrä vuorotellen
 EST Pinguldage vaheldumisi
 LAT Pieļieciet pamišus
 LIT Užsukinėkite pakaitomis
 PL Śruby dokręcaj naprzemiennie
 RU Затягивайте попеременно

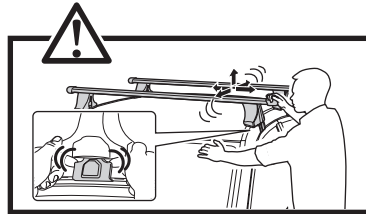
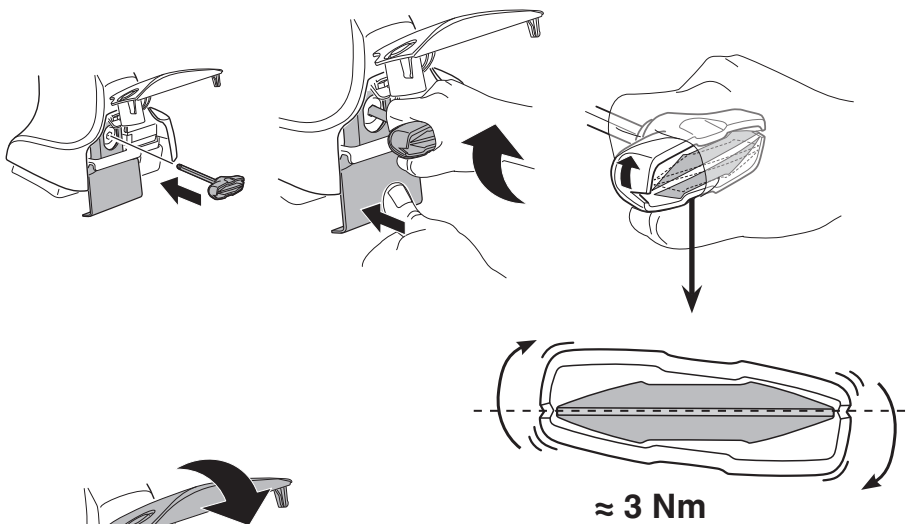
CZ Pokręťta bagażnika dokręcaj dokręcaj naprzemiennie.
 SK Dofahajte striedavo
 SLO Privijajte izmenično.
 HR Naizmjerno zategnite
 HU Egymástól függetlenül szorítandó
 GR Σφιγγείτε εναλλάξ
 TR Dönüşümlü sıkın

中文 交替拧紧

한국어 번갈아 가며 조이십시오.

日本語 交互に締め付けてください。

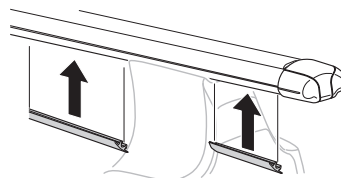
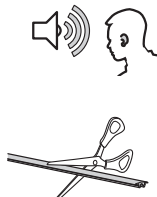
ไทย ชันในแบบสลับ

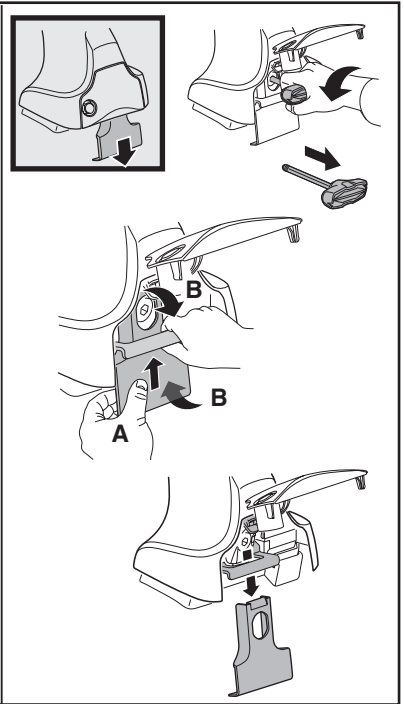
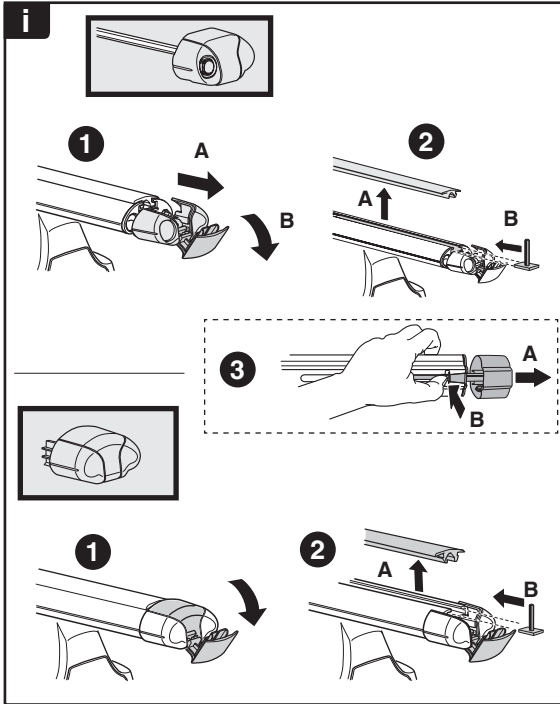
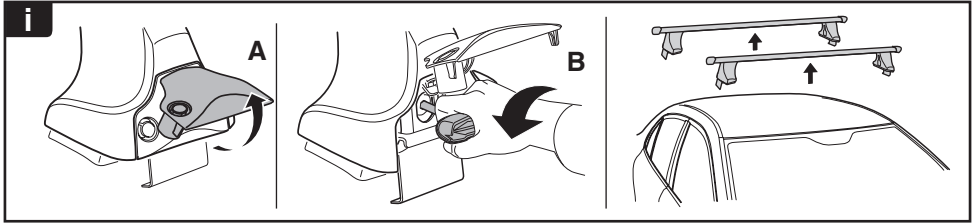


8



x1
17 mm





THULE
SWEDEN
**ONE
KEY
SYSTEM**



		(x4)
		(x6)
		(x8)
NA		(x10)
EUR		(x12)
ASIA		



WW ▶ Thule Sweden AB, Box 69, 330 33 Hillerstorp, SWEDEN
NA ▶ Thule Inc., 42 Silvermine Road, Seymour, Connecticut 06483, USA

info@thule.com
customer.service@thule.com

www.thule.com