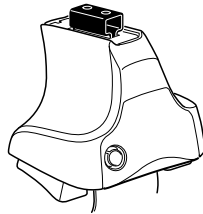
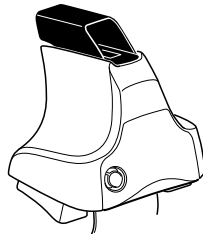
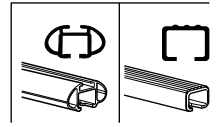


Kit 1691

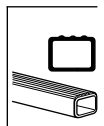
HONDA CR-V, 5-dr SUV, 12- (Without railing)



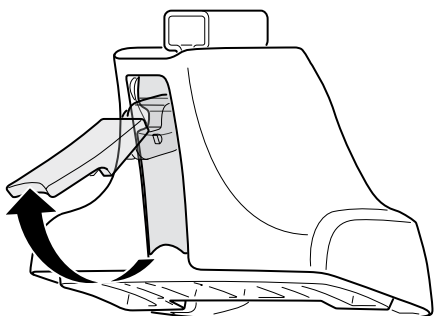
754 Rapid System
480R Rapid Traverse (North America)



480 Traverse (North America)



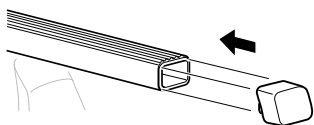
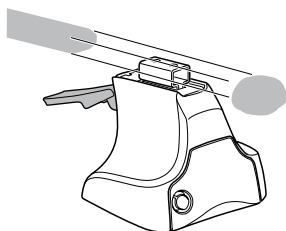
1



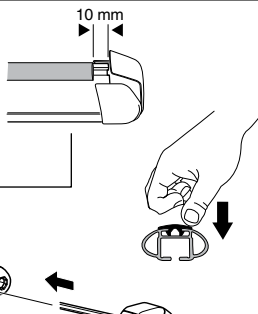
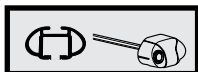
2



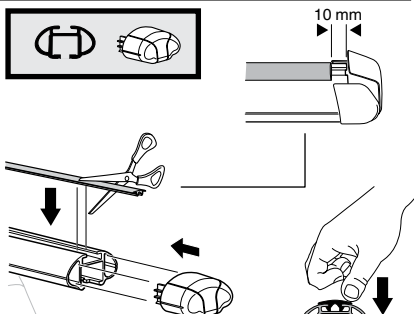
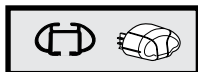
754 Rapid System
480R Rapid Traverse
(North America)



x4



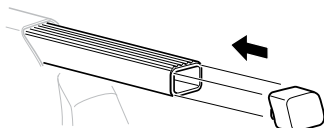
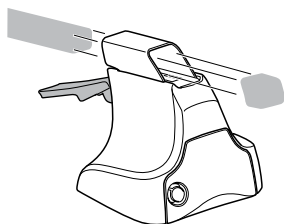
x4



x4

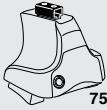


480 Traverse
(North America)

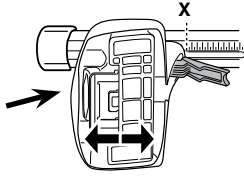


x4

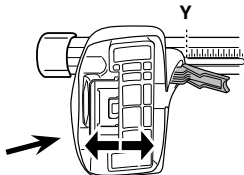
3



754 Rapid System

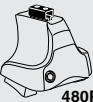


	X
HONDA CR-V, 5-dr SUV, 12- (Without railing)	44



	Y
HONDA CR-V, 5-dr SUV, 12- (Without railing)	40

3



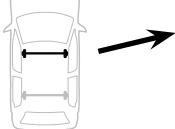
480R Rapid Traverse



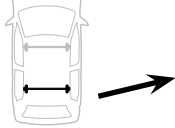
480 Traverse



(North America)

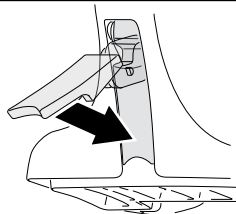


	X inch	X mm
HONDA CR-V, 5-dr SUV, 12- (Without railing)	43"	1091 mm



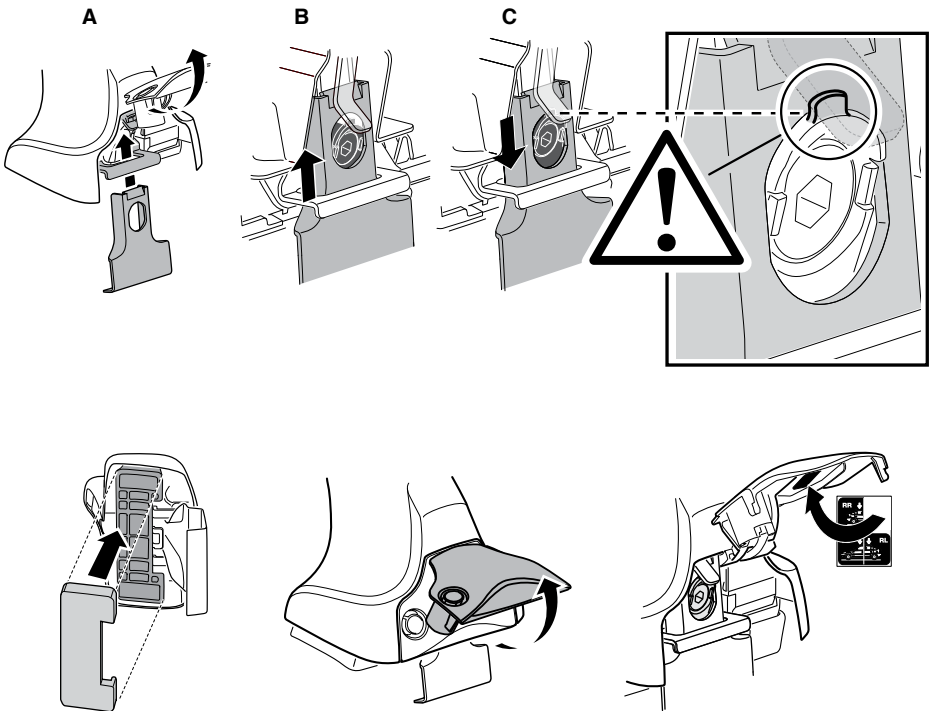
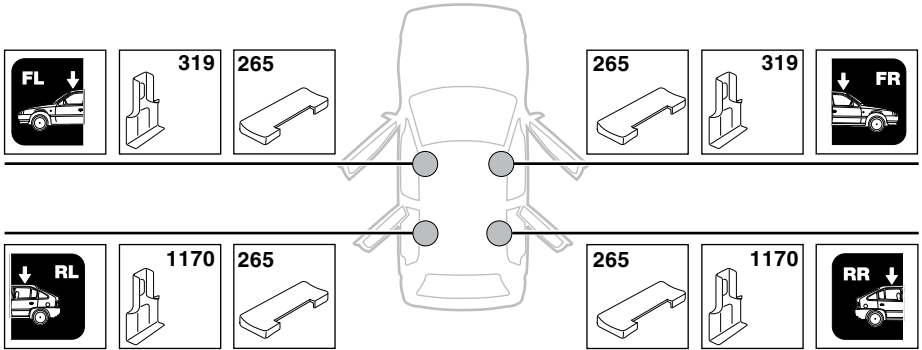
	Y inch	Y mm
HONDA CR-V, 5-dr SUV, 12- (Without railing)	41 3/8"	1051 mm

4

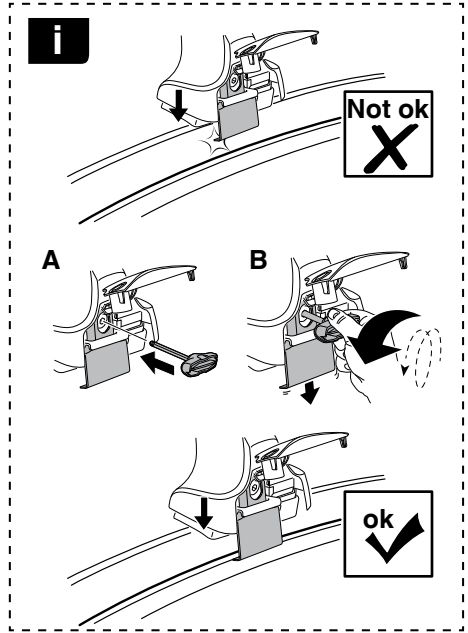
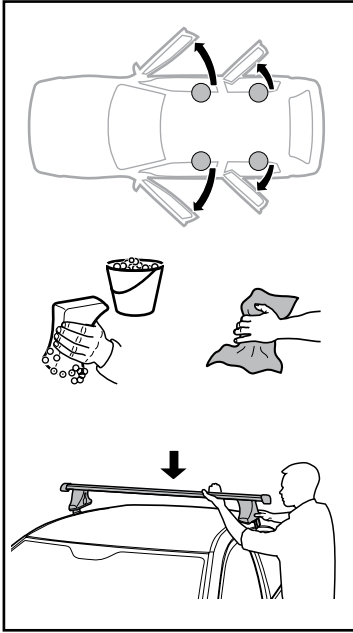


5

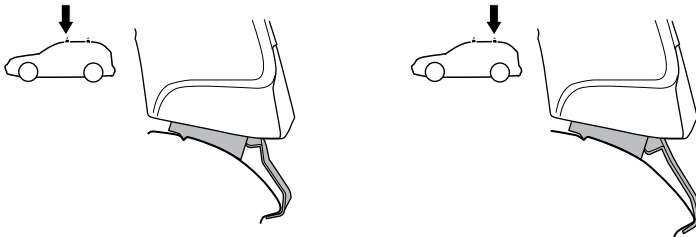
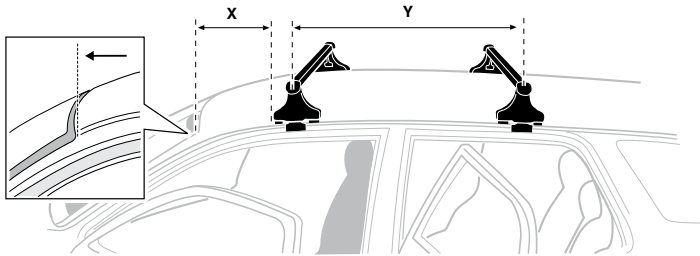
HONDA CR-V, 5-dr SUV, 12- (Without railing)



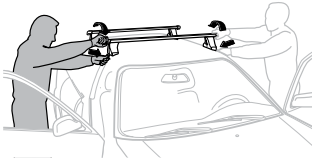
6



	X mm	Y mm	X inch	Y inch
HONDA CR-V, 5-dr SUV, 12- (Without railing)	400 mm	700 mm	15 3/4"	27 1/2"



7



GB/US	Tighten alternately
D	Die Schrauben abwechselnd anziehen
F	Serrer alternativement chaque côté
NL	Afwisselend aan de linker- en de rechterkant aandraaien
I	Alternare il serraggio delle viti
E	Apertar alternativamente
PT	Aperte alternadamente
S	Dra åt växelvis
FIN	Kierrä vuorotellen
EST	Pinguldage vaheldumisi
LAT	Pielveiciet pamišus
LIT	Užsukinėkite pakaitomis
PL	Śruby dokręcaj naprzemiennie
RU	Загряивайте попеременно

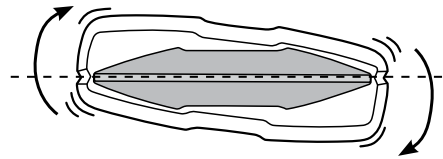
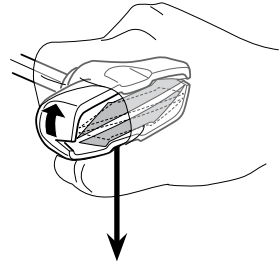
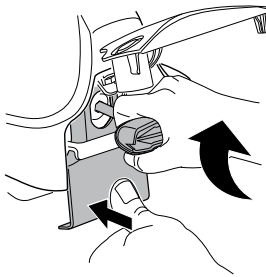
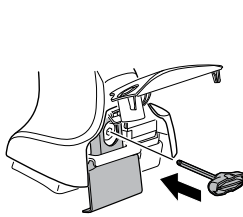
CZ	Pokręřta багаžnika dokręcaj naprzemiennie.
SK	Dofahajte striedavo
SLO	Privijajte izmenično.
HR	Naizmjenično zategnite
HU	Egymástól függetlenül szorítandó
GR	Σφιγίγες ενολάξ
TR	Dönüşümlü sıkın

中文 交替拧紧

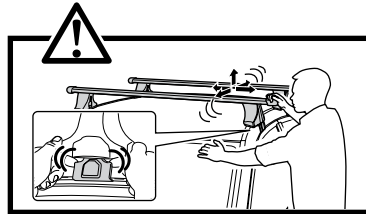
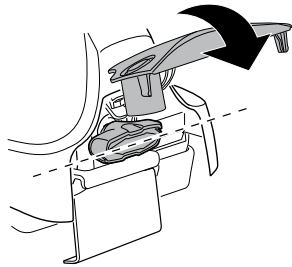
한국어 번갈아 가며 조이십시오.

日本語 交互に締め付けてください。

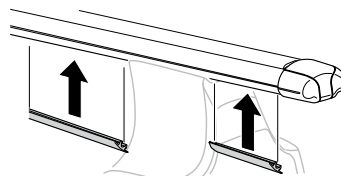
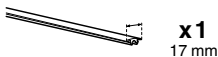
ไทย ชันในแบบสลับ

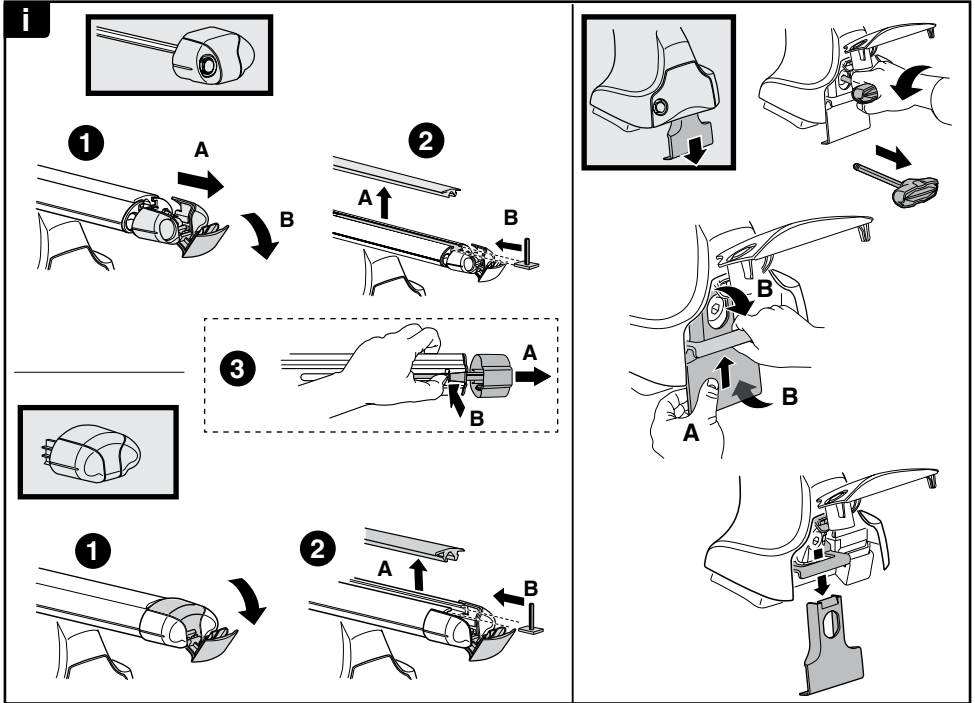
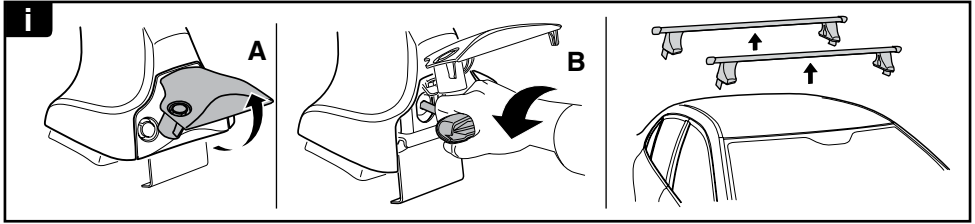


≈ 3 Nm

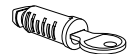
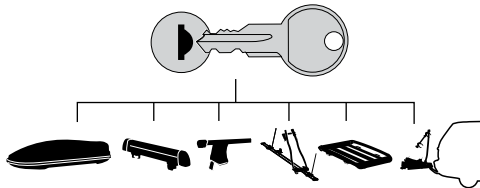


8





THULE
SWEDEN
**ONE
KEY
SYSTEM**



544 (x4)

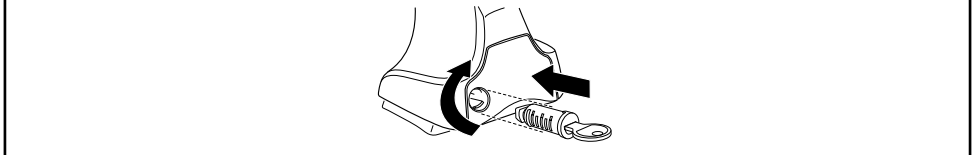
596 (x6)

588 (x8)

NA **510** (x10)

EUR **452** (x12)

ASIA



WW ▶ Thule Sweden AB, Box 69, 330 33 Hillerstorp, SWEDEN
NA ▶ Thule Inc., 42 Silvermine Road, Seymour, Connecticut 06483, USA

info@thule.com
customer.service@thule.com

www.thule.com

503-1691-01