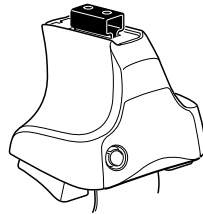
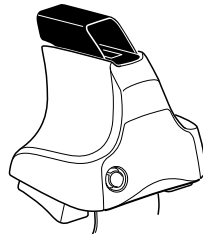


Kit 1672

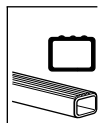
- SEAT Mii**, 3-dr Hatchback, 12-
- SEAT Mii**, 5-dr Hatchback, 12-
- SKODA Citigo**, 3-dr Hatchback, 12-
- SKODA Citigo**, 5-dr Hatchback, 12-
- VOLKSWAGEN Up**, 3-dr Hatchback, 12-
- VOLKSWAGEN Up**, 5-dr Hatchback, 12-



754 Rapid System
480R Rapid Traverse (North America)



480 Traverse (North America)



754 Rapid System
480R Rapid Traverse (North America)

754 Rapid System
480R Rapid Traverse (North America)

480 Traverse (North America)

(North America)

743 x2
1218 x2
239 x4
x1

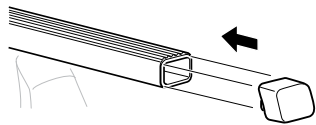
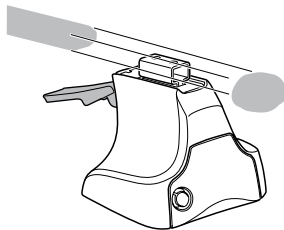
1



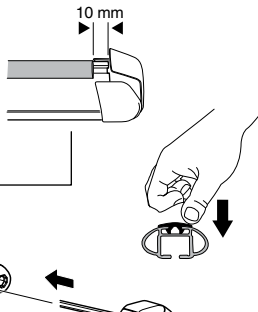
2



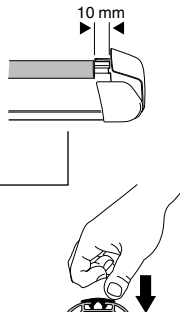
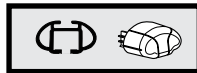
754 Rapid System
480R Rapid Traverse
(North America)



x4



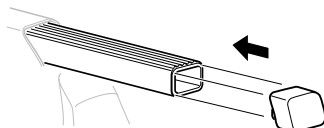
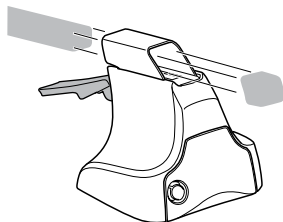
x4



x4

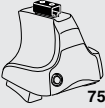


480 Traverse
(North America)

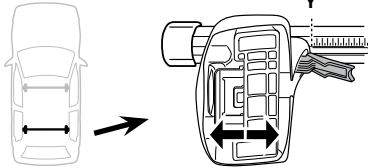
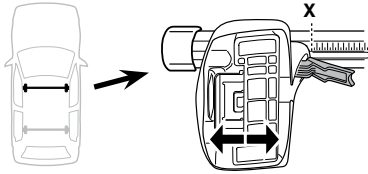


x4

3



754 Rapid System



	X
SEAT Mii, 3-dr Hatchback, 12-	37,5
SEAT Mii, 5-dr Hatchback, 12-	37,5
SKODA Citigo, 3-dr Hatchback, 12-	37,5
SKODA Citigo, 5-dr Hatchback, 12-	37,5
VOLKSWAGEN Up, 3-dr Hatchback, 12-	37,5
VOLKSWAGEN Up, 5-dr Hatchback, 12-	37,5

	Y
SEAT Mii, 3-dr Hatchback, 12-	35
SEAT Mii, 5-dr Hatchback, 12-	35
SKODA Citigo, 3-dr Hatchback, 12-	35
SKODA Citigo, 5-dr Hatchback, 12-	35
VOLKSWAGEN Up, 3-dr Hatchback, 12-	35
VOLKSWAGEN Up, 5-dr Hatchback, 12-	35

3

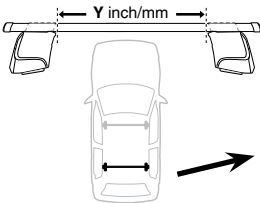
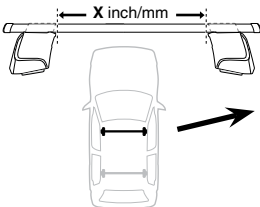


480R Rapid Traverse



480 Traverse

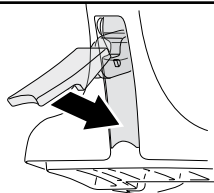
(North America)



	X inch	X mm
SEAT Mii, 3-dr Hatchback, 12-	40 ³ / ₈ "	1026 mm
SEAT Mii, 5-dr Hatchback, 12-	40 ³ / ₈ "	1026 mm
SKODA Citigo, 3-dr Hatchback, 12-	40 ³ / ₈ "	1026 mm
SKODA Citigo, 5-dr Hatchback, 12-	40 ³ / ₈ "	1026 mm
VOLKSWAGEN Up, 3-dr Hatchback, 12-	40 ³ / ₈ "	1026 mm
VOLKSWAGEN Up, 5-dr Hatchback, 12-	40 ³ / ₈ "	1026 mm

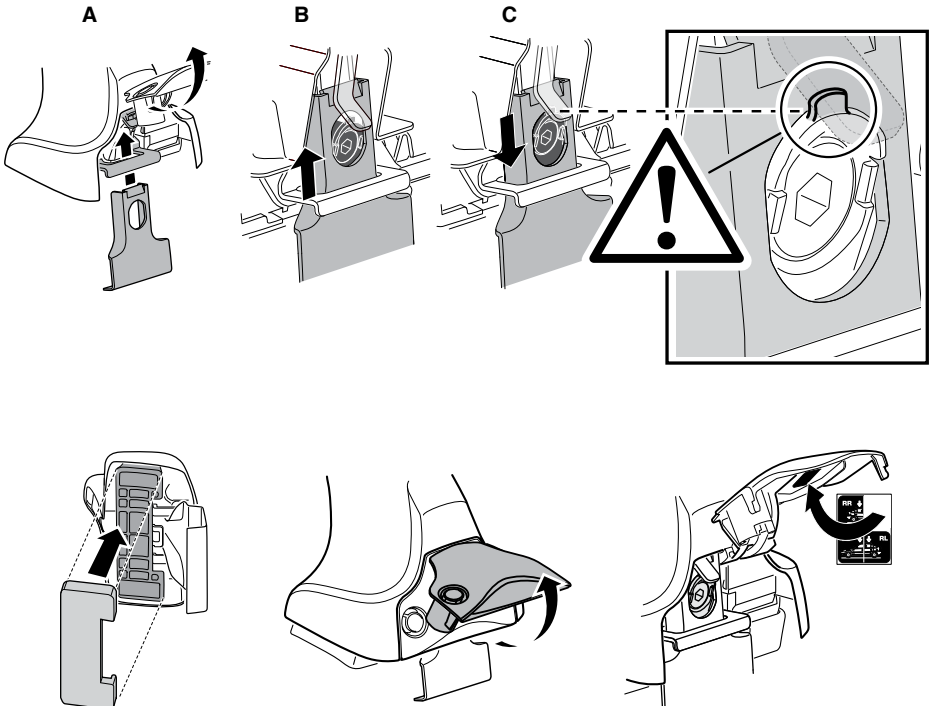
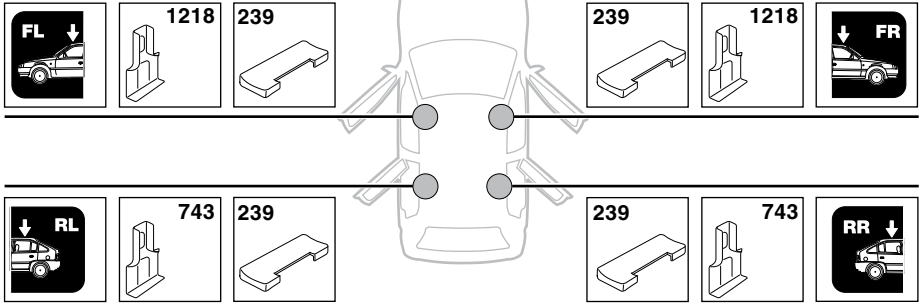
	Y inch	Y mm
SEAT Mii, 3-dr Hatchback, 12-	39 ³ / ₈ "	1001 mm
SEAT Mii, 5-dr Hatchback, 12-	39 ³ / ₈ "	1001 mm
SKODA Citigo, 3-dr Hatchback, 12-	39 ³ / ₈ "	1001 mm
SKODA Citigo, 5-dr Hatchback, 12-	39 ³ / ₈ "	1001 mm
VOLKSWAGEN Up, 3-dr Hatchback, 12-	39 ³ / ₈ "	1001 mm
VOLKSWAGEN Up, 5-dr Hatchback, 12-	39 ³ / ₈ "	1001 mm

4

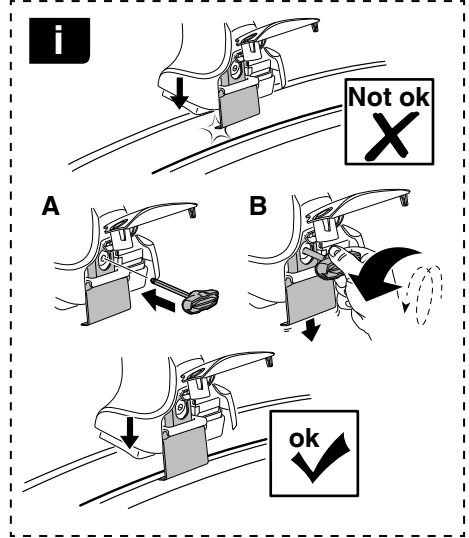
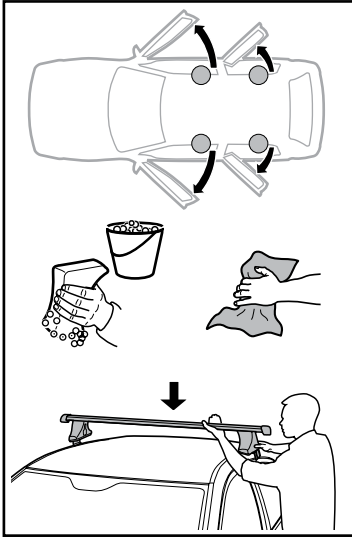


5

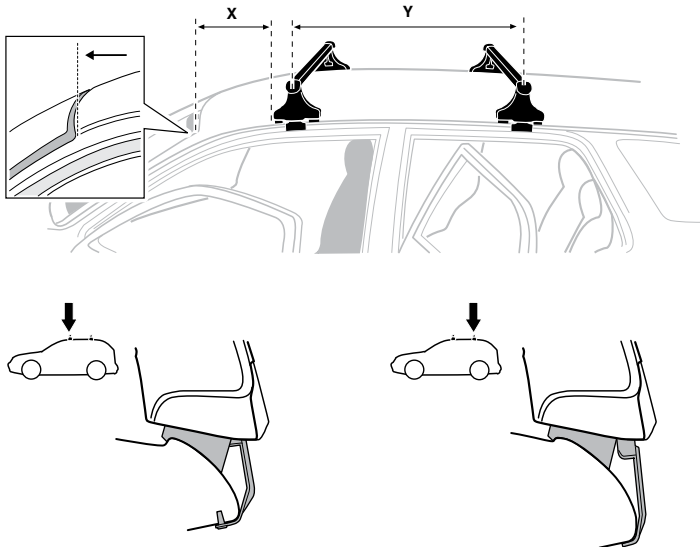
SEAT Mii, 3-dr Hatchback, 12-
SEAT Mii, 5-dr Hatchback, 12-
SKODA Citigo, 3-dr Hatchback, 12-
SKODA Citigo, 5-dr Hatchback, 12-
VOLKSWAGEN Up, 3-dr Hatchback, 12-
VOLKSWAGEN Up, 5-dr Hatchback, 12-



6



	X mm	Y mm	X inch	Y inch
SEAT Mii , 3-dr Hatchback, 12-	340 mm	720 mm	13 ³ / ₈ "	28 ³ / ₈ "
SEAT Mii , 5-dr Hatchback, 12-	340 mm	720 mm	13 ³ / ₈ "	28 ³ / ₈ "
SKODA Citigo , 3-dr Hatchback, 12-	340 mm	720 mm	13 ³ / ₈ "	28 ³ / ₈ "
SKODA Citigo , 5-dr Hatchback, 12-	340 mm	720 mm	13 ³ / ₈ "	28 ³ / ₈ "
VOLKSWAGEN Up , 3-dr Hatchback, 12-	340 mm	720 mm	13 ³ / ₈ "	28 ³ / ₈ "
VOLKSWAGEN Up , 5-dr Hatchback, 12-	340 mm	720 mm	13 ³ / ₈ "	28 ³ / ₈ "



7



GB/US Tighten alternately
 D Die Schrauben abwechselnd anziehen
 F Serrer alternativement chaque côté
 NL Afwisselend aan de linker- en de rechterkant aandraaien
 I Alternare il serraggio delle viti
 E Apertar alternativamente
 PT Aperte alternadamente
 S Dra åt växelvis
 FIN Kierrä vuorotellen
 EST Pinguldage vaheldumisi
 LAT Pieļieciet pamišus
 LIT Užsukinėkite pakaitomis
 PL Śruby dokręcaj naprzemiennie
 RU Затягивайте попеременно

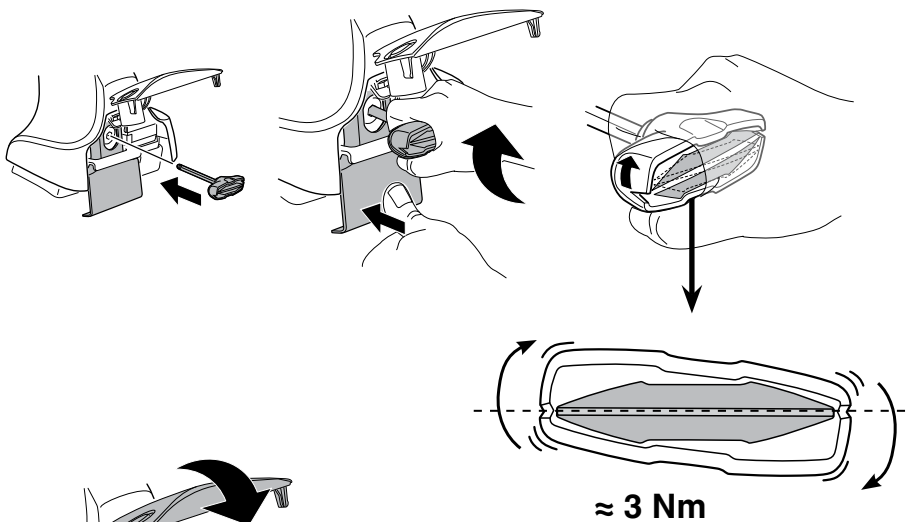
CZ Pokręťta bagażnika dokręcaj naprzemiennie.
 SK Dofahajte striedavo
 SLO Privijajte izmenično.
 HR Naizmjerno zategnite
 HU Egymástól függetlenül szorítandó
 GR Σφιγίγτες εναλλάξ
 TR Dönüşümlü sıkın

中文 交替拧紧

한국어 번갈아 가며 조이십시오.

日本語 交互に締め付けてください。

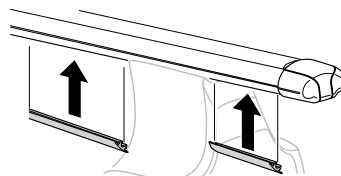
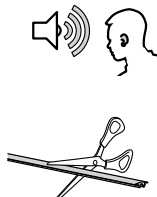
ไทย ชันในแบบสลับ

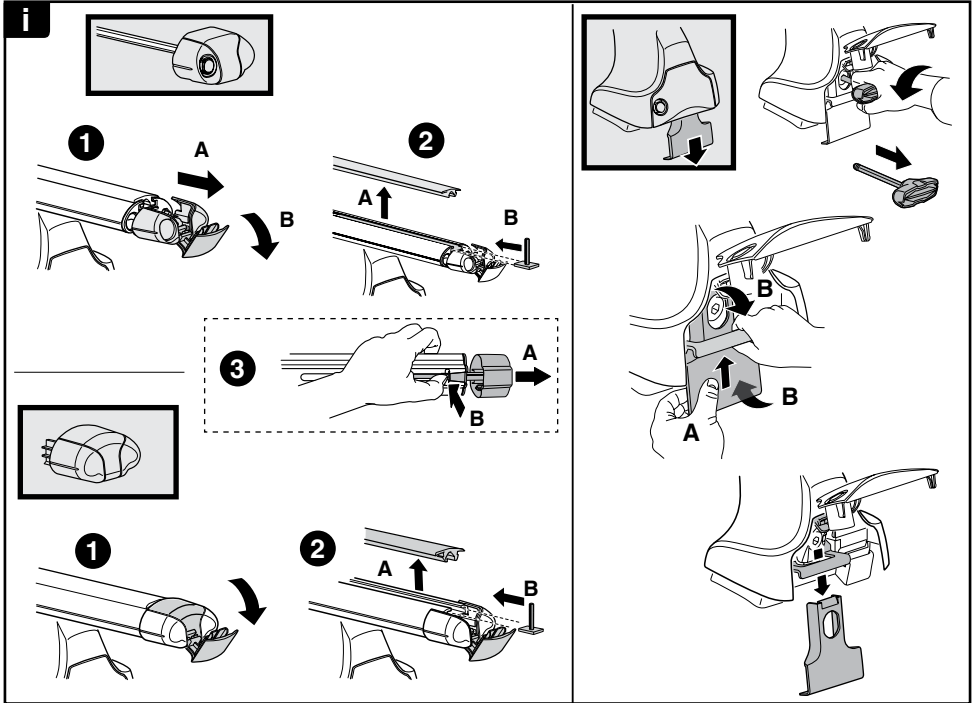


8

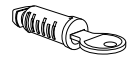
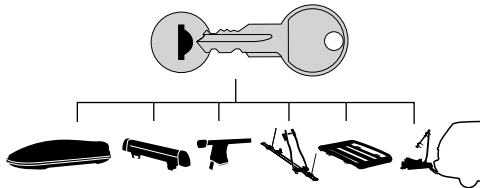


x1
17 mm





THULE
SWEDEN
**ONE
KEY
SYSTEM**



- 544** (x4)
- 596** (x6)
- 588** (x8)
- NA **510** (x10)
- EUR **452** (x12)
- ASIA

