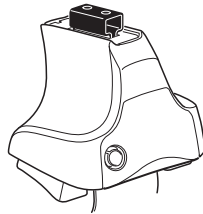


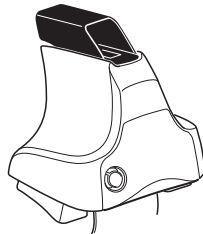
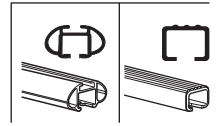
Kit 1651

AUDI A6, 4-dr Sedan, 11- / *12-

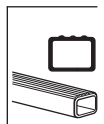
*North America



754 Rapid System
480R Rapid Traverse (North America)



480 Traverse (North America)

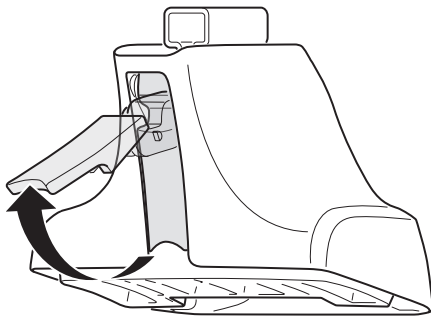


- 754 Rapid System: x1 (box), x4 (cubes), x4 (754 Rapid Traverse), x4 (screws)
- 480R Rapid Traverse (North America): x1 (ruler), x4 (480R Rapid Traverse), x4 (screws)
- 480 Traverse (North America): x1 (ruler), x4 (480 Traverse), x4 (screws)

- Bar: x2
- Hardware: x2 (23 mm), x2 (23 mm), x4 (screws), x4 (screws)
- Hardware: x1 (17 mm), x2 (23 mm), x2 (23 mm), x2 (23 mm), x4 (screws)
- Hardware (North America): x2 (23 mm), x2 (23 mm), x2 (23 mm), x2 (23 mm), x2 (bar), x2 (bar)

- Bracket: x4 (1172)
- Bracket: x2 (338)
- Bracket: x2 (339)
- Coil: x1 (52269)
- Label: x1 (RR, FR, FL, RL)

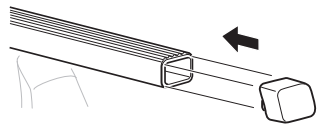
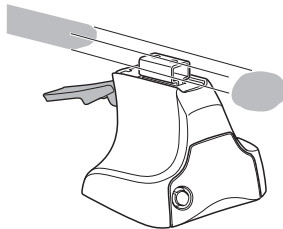
1



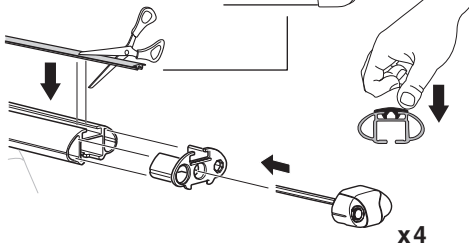
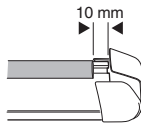
2



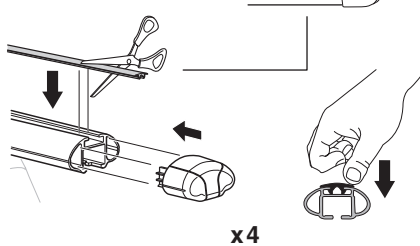
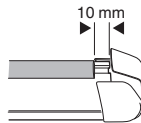
754 Rapid System
480R Rapid Traverse
(North America)



x4



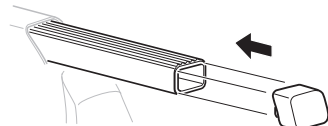
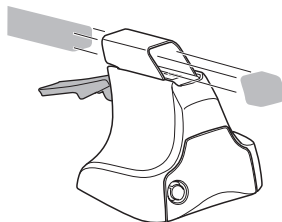
x4



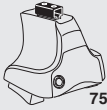
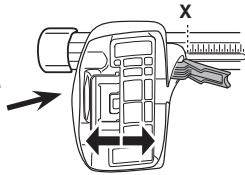
x4



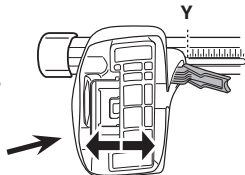
480 Traverse
(North America)



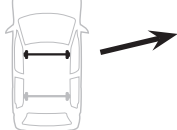
x4

3**754** Rapid System

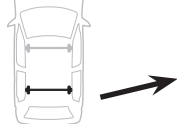
| | X |
|--|-----------|
| AUDI A6, 4-dr Sedan, 11- / *12- | 40 |



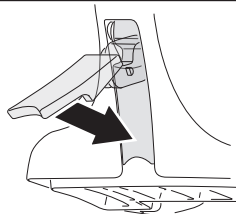
| | Y |
|--|-----------|
| AUDI A6, 4-dr Sedan, 11- / *12- | 39 |

3**480R** Rapid Traverse**480** Traverse**(North America)**

| | X inch | X mm |
|--|---------------------------------------|----------------|
| AUDI A6, 4-dr Sedan, 11- / *12- | 41 ³/₈ " | 1051 mm |

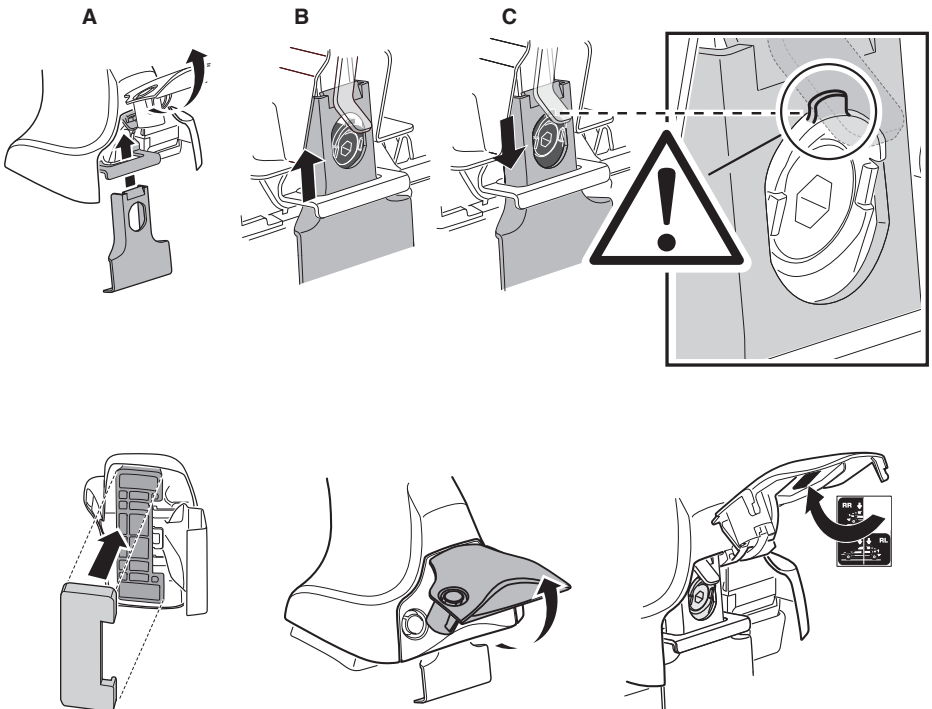
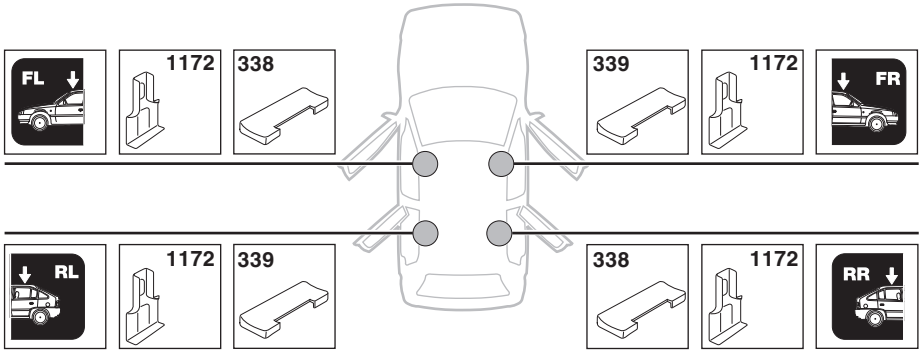


| | Y inch | Y mm |
|--|---------------|----------------|
| AUDI A6, 4-dr Sedan, 11- / *12- | 41 " | 1041 mm |

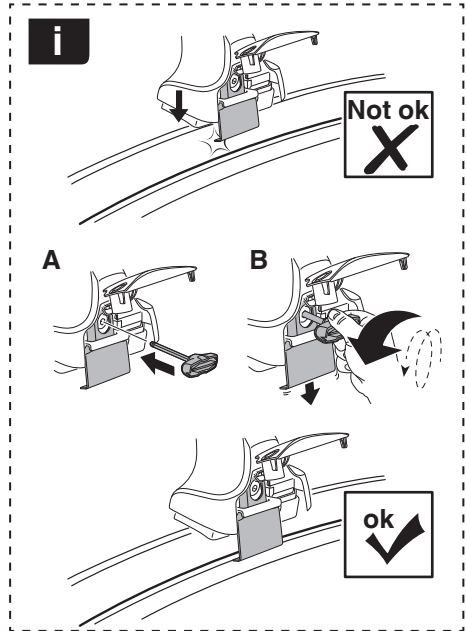
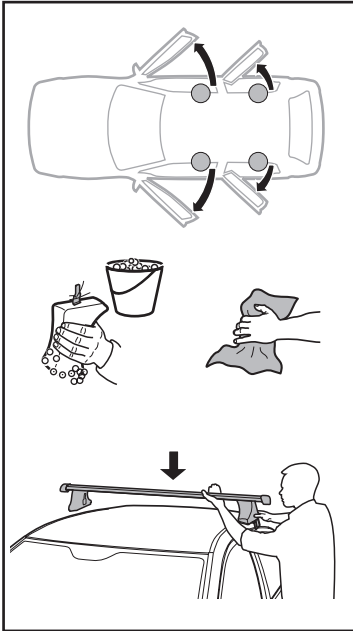
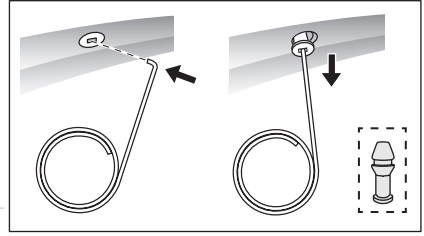
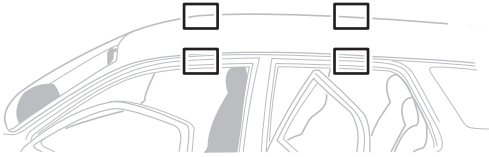
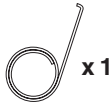
4

5

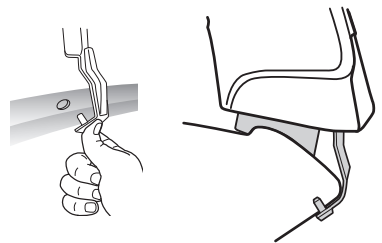
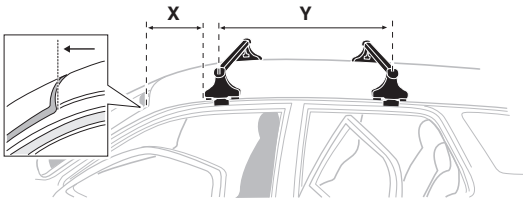
AUDI A6, 4-dr Sedan, 11- / *12-



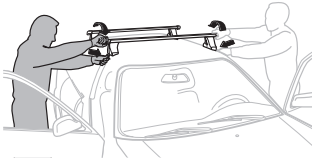
6



| | X mm | Y mm | X inch | Y inch |
|-------------------------------|--------|--------|---------|---------|
| AUDI A6, 4-dr Sedan, 11-/*12- | 270 mm | 725 mm | 10 5/8" | 28 1/2" |



7



GB/US Tighten alternately
 D Die Schrauben abwechselnd anziehen
 F Serrer alternativement chaque côté
 NL Afwisselend aan de linker- en de rechterkant aandraaien
 I Alternare il serraggio delle viti
 E Apretar alternativamente
 PT Aperte alternadamente
 S Dra åt växelvis
 FIN Kierrä vuorotellen
 EST Pinguldage vaheldumisi
 LAT Pieļieciet pamišus
 LIT Užsukinėkite pakaitomis
 PL Śruby dokręcaj naprzemiennie
 RU Затягивайте попеременно

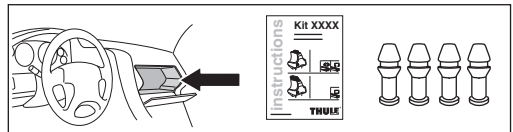
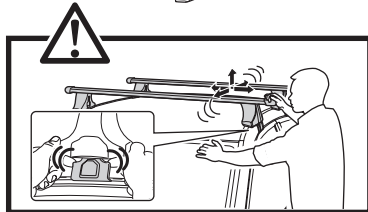
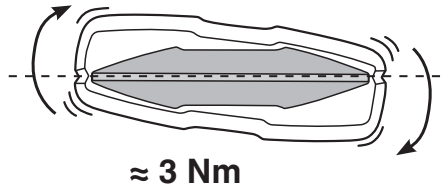
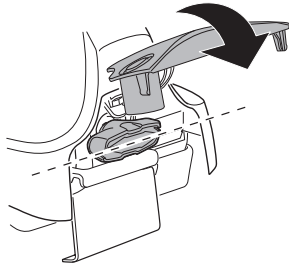
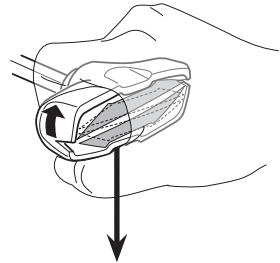
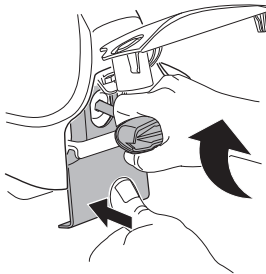
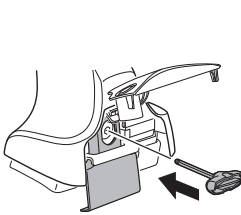
CZ Pokręťta bagažníka dokręcaj dokręcaj naprzemiennie.
 SK Dofahajte striedavo
 SLO Privijajte izmenično.
 HR Naizmjenično zategnite
 HU Egymástól fűggetlenül szorítandó
 GR Σφιγίγεται εναλλάξ
 TR Dönüşümlü sıkın

中文 交替拧紧

한국어 번갈아 가며 조이십시오.

日本語 交互に締め付けてください。

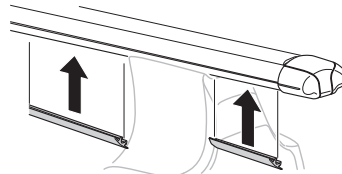
ไทย ขึ้นในแบบสลับ

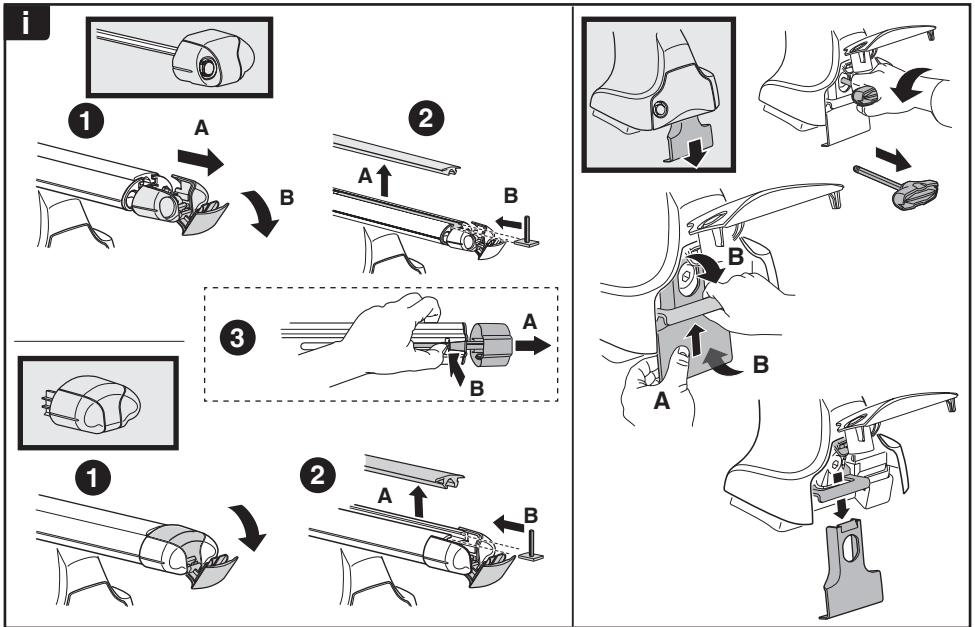
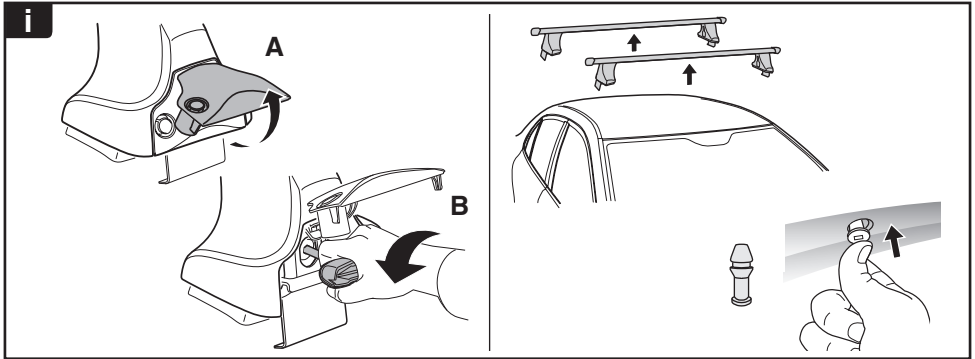


8

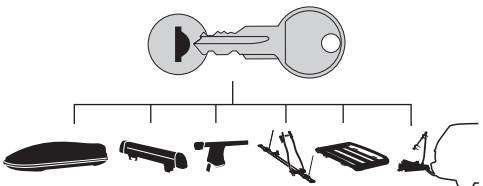


x1
17 mm





THULE
SWEDEN
**ONE
KEY
SYSTEM**



- 544** (x4)
 - 596** (x6)
 - 588** (x8)
 - 510** (x10)
 - 452** (x12)
- NA
EUR
ASIA

