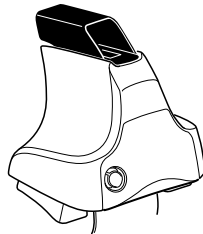
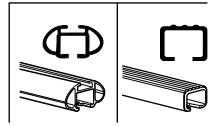


# Kit 1646

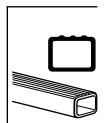
RENAULT Latitude, 4-dr Sedan, 11-



754 Rapid System  
480R Rapid Traverse (North America)



480 Traverse (North America)



**Max. 50 kg**  
**Max. 110 lbs**

**754 Rapid System**  
**480R Rapid Traverse (North America)**

**480 Traverse (North America)**

**(North America)**

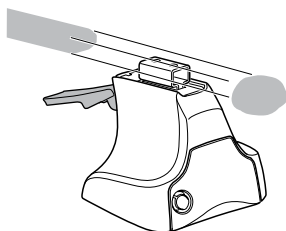
1



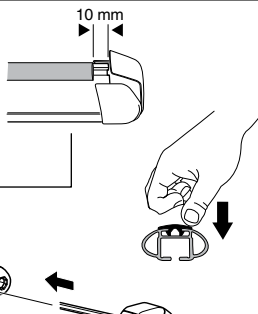
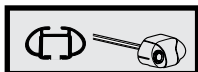
2



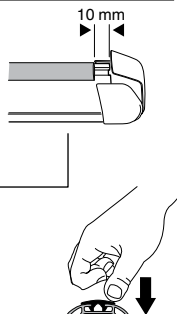
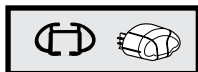
754 Rapid System  
480R Rapid Traverse  
(North America)



x4



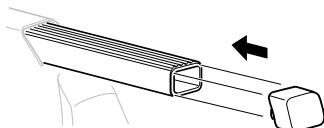
x4



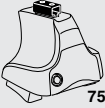
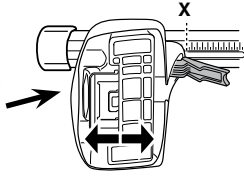
x4



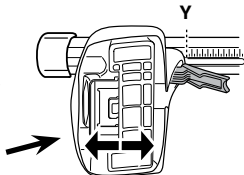
480 Traverse  
(North America)



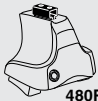
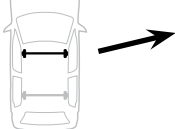
x4

**3****754** Rapid System

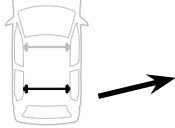
	<b>X</b>
<b>RENAULT Latitude, 4-dr Sedan, 11-</b>	<b>35,5</b>



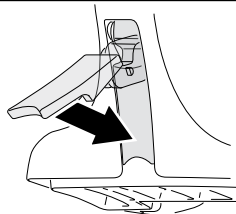
	<b>Y</b>
<b>RENAULT Latitude, 4-dr Sedan, 11-</b>	<b>33,5</b>

**3****480R** Rapid Traverse**480** Traverse**(North America)**

	<b>X inch</b>	<b>X mm</b>
<b>RENAULT Latitude, 4-dr Sedan, 11-</b>	<b>39 <sup>5</sup>/<sub>8</sub>"</b>	<b>1006 mm</b>

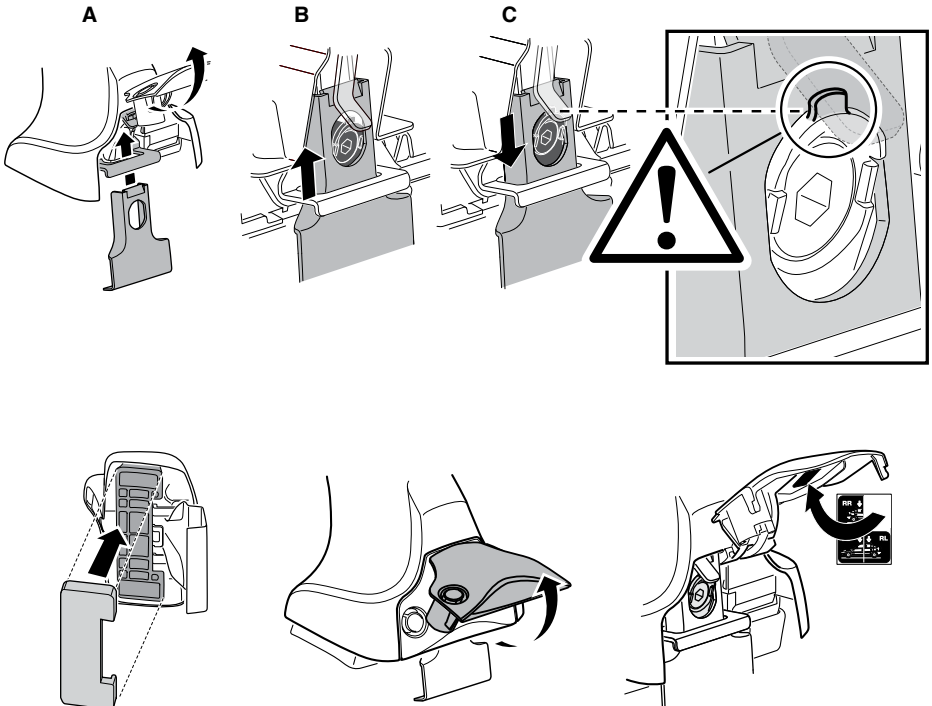
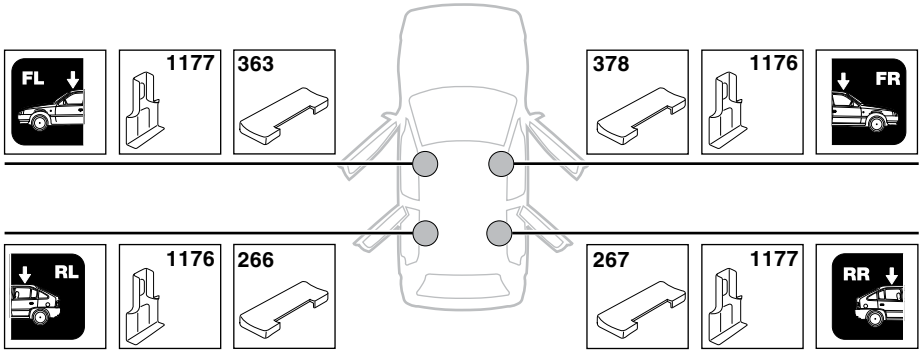


	<b>Y inch</b>	<b>Y mm</b>
<b>RENAULT Latitude, 4-dr Sedan, 11-</b>	<b>38 <sup>7</sup>/<sub>8</sub>"</b>	<b>986 mm</b>

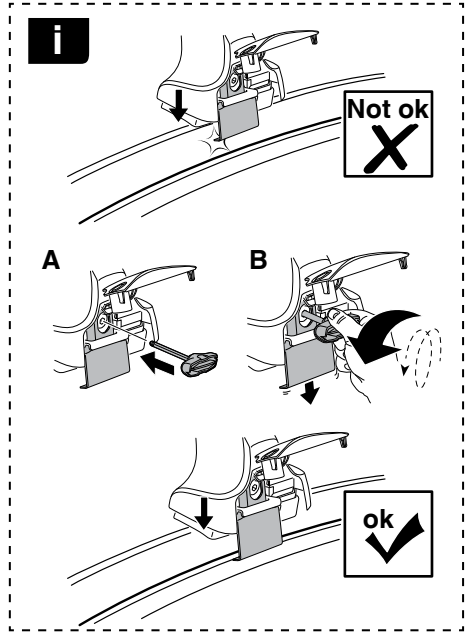
**4**

# 5

RENAULT Latitude, 4-dr Sedan, 11-

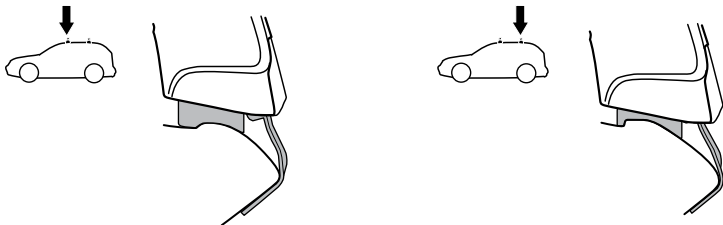
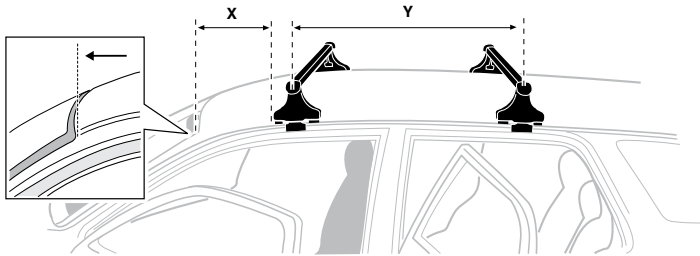


6



RENAULT Latitude, 4-dr Sedan, 11-

X mm	Y mm	X inch	Y inch
240 mm	700 mm	9 1/2"	27 1/2"



7



<b>GB/US</b>	Tighten alternately
<b>D</b>	Die Schrauben abwechselnd anziehen
<b>F</b>	Serrer alternativement chaque côté
<b>NL</b>	Afwisselend aan de linker- en de rechterkant aandraaien
<b>I</b>	Alternare il serraggio delle viti
<b>E</b>	Apertar alternativamente
<b>PT</b>	Aperte alternadamente
<b>S</b>	Dra åt växelvis
<b>FIN</b>	Kierrä vuorotellen
<b>EST</b>	Pinguldage vaheldumisi
<b>LAT</b>	Pielveiciet pamišus
<b>LIT</b>	Užsukinėkite pakaitomis
<b>PL</b>	Śruby dokręcaj naprzemiennie
<b>RU</b>	Загряивайте попеременно

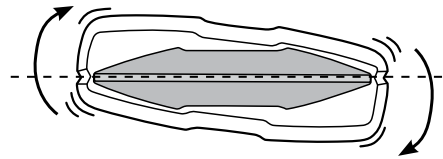
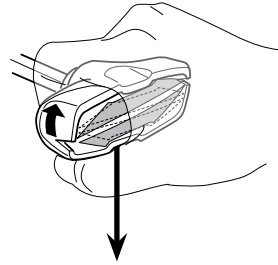
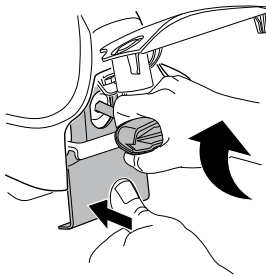
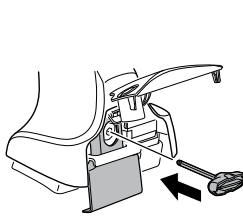
<b>CZ</b>	Pokręřta багаžnika dokręcaj naprzemiennie.
<b>SK</b>	Dofahajte striedavo
<b>SLO</b>	Privijajte izmenično.
<b>HR</b>	Naizmjenično zategnite
<b>HU</b>	Egymástól függetlenül szorítandó
<b>GR</b>	Σφιγίγτες εναλλάξ
<b>TR</b>	Dönüşümlü sıkın

**中文** 交替拧紧

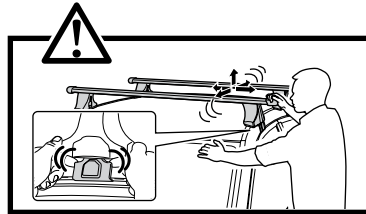
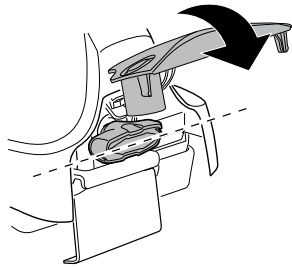
**한국어** 번갈아 가며 조이십시오.

**日本語** 交互に締め付けてください。

**ไทย** ชันในแบบสลับ



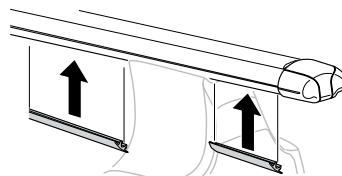
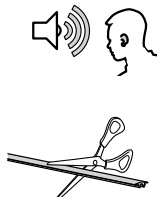
≈ 3 Nm

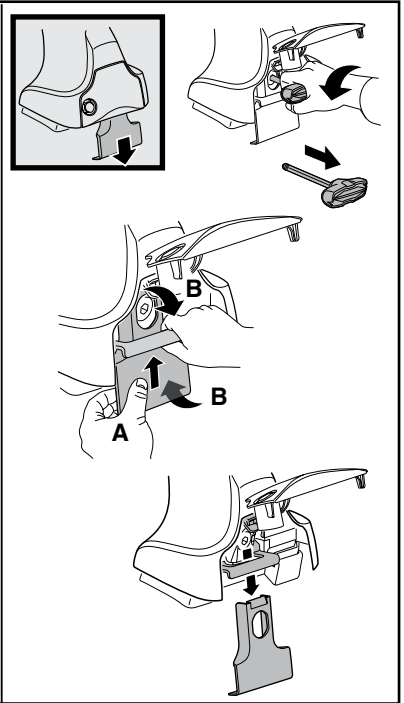
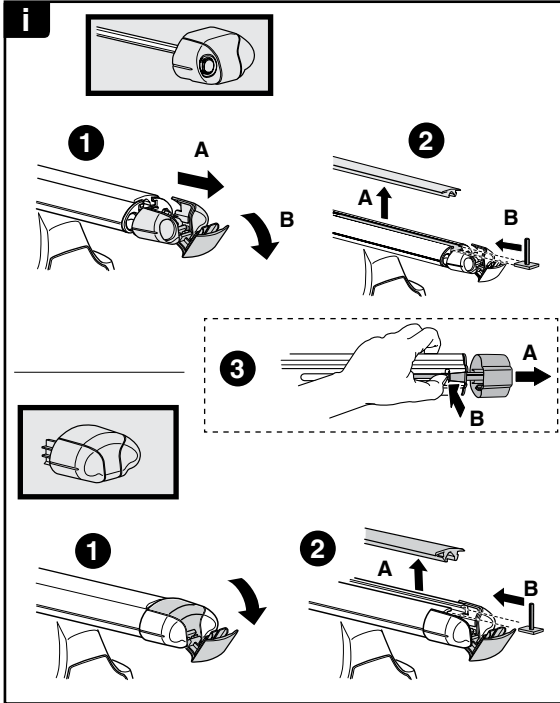


8

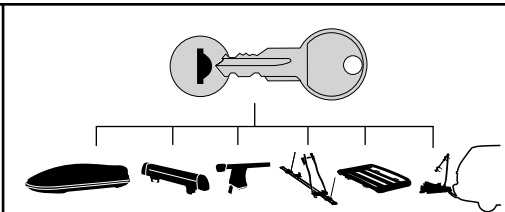


x1  
17 mm





**THULE**  
SWEDEN  
**ONE  
KEY  
SYSTEM**



		(x4)
		(x6)
		(x8)
NA		(x10)
EUR		(x12)
ASIA		



WW ▶ Thule Sweden AB, Box 69, 330 33 Hillerstorp, SWEDEN  
NA ▶ Thule Inc., 42 Silvermine Road, Seymour, Connecticut 06483, USA

info@thule.com  
customer.service@thule.com

www.thule.com