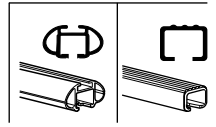


# Kit 1644

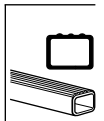
PEUGEOT 508, 4-dr Sedan, 11-



**754** Rapid System  
**480R** Rapid Traverse (North America)



**480** Traverse (North America)



754 Rapid System  
480R Rapid Traverse (North America)

(North America)

- Bar (top): x2
- Bar (middle): x2
- Bar (bottom): x2
- Washer (top): x2
- Washer (middle): x2
- Washer (bottom): x2
- Nut (top): x4
- Nut (middle): x4
- Nut (bottom): x4
- Bar (North America): x2
- Washer (North America): x2
- Washer (North America): x2
- Washer (North America): x2

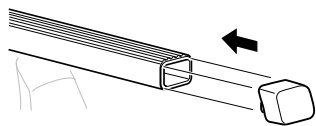
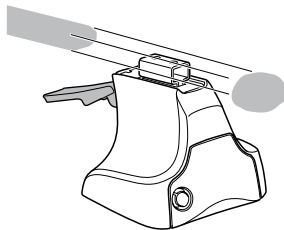
1



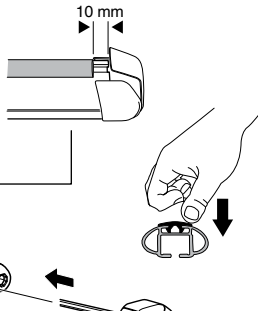
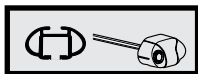
2



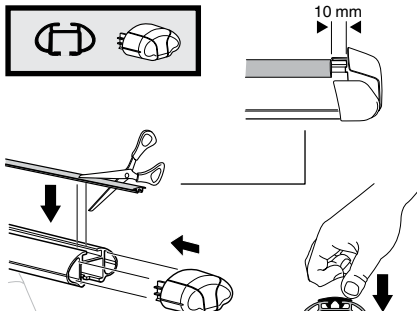
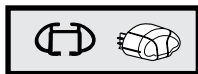
754 Rapid System  
480R Rapid Traverse  
(North America)



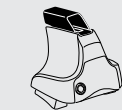
x4



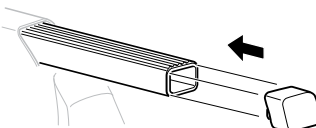
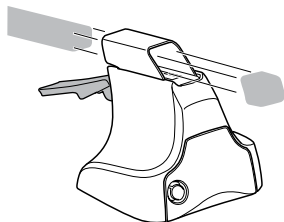
x4



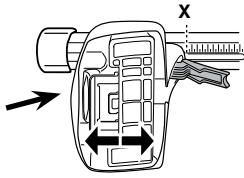
x4



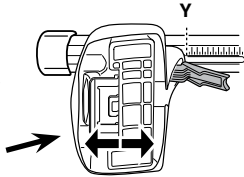
480 Traverse  
(North America)



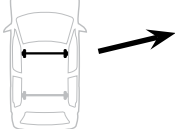
x4

**3****754** Rapid System

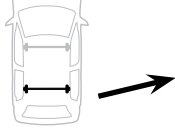
	<b>X</b>
PEUGEOT 508, 4-dr Sedan, 11-	<b>39,5</b>



	<b>Y</b>
PEUGEOT 508, 4-dr Sedan, 11-	<b>37</b>

**3****480R** Rapid Traverse**480** Traverse**(North America)**

	<b>X inch</b>	<b>X mm</b>
PEUGEOT 508, 4-dr Sedan, 11-	<b>41 1/8"</b>	<b>1046 mm</b>

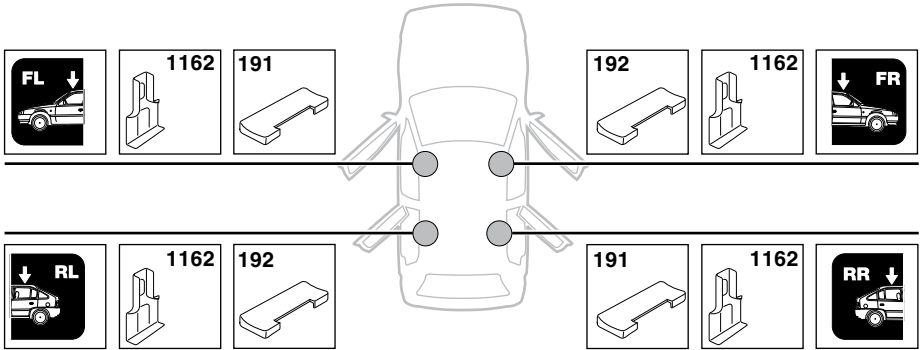


	<b>Y inch</b>	<b>Y mm</b>
PEUGEOT 508, 4-dr Sedan, 11-	<b>40 1/4"</b>	<b>1021 mm</b>

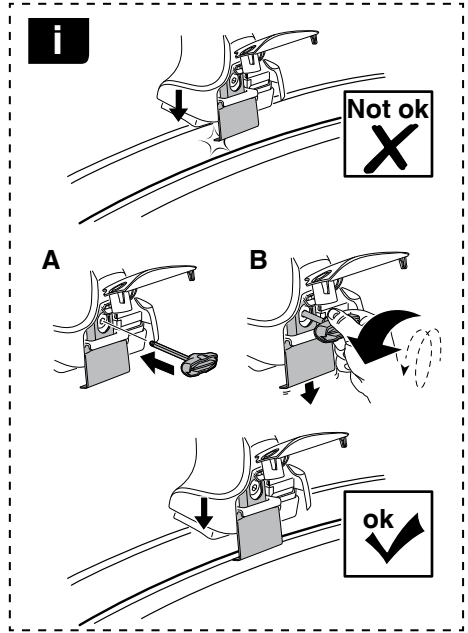
**4**

# 5

PEUGEOT 508, 4-dr Sedan, 11-

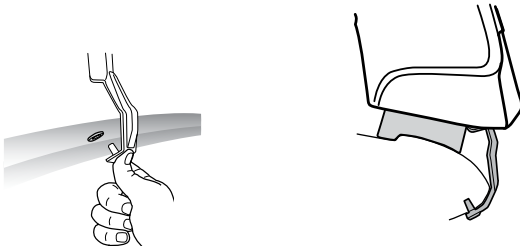
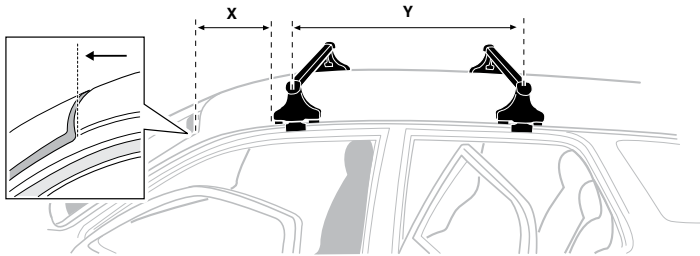


6



PEUGEOT 508, 4-dr Sedan, 11-

X mm	Y mm	X inch	Y inch
265 mm	725 mm	10 <sup>3</sup> / <sub>8</sub> "	28 <sup>1</sup> / <sub>2</sub> "



7



<b>GB/US</b>	Tighten alternately
<b>D</b>	Die Schrauben abwechselnd anziehen
<b>F</b>	Serrer alternativement chaque côté
<b>NL</b>	Afwisselend aan de linker- en de rechterkant aandraaien
<b>I</b>	Alternare il serraggio delle viti
<b>E</b>	Apertar alternativamente
<b>PT</b>	Aperte alternadamente
<b>S</b>	Dra åt växelvis
<b>FIN</b>	Kierrä vuorotellen
<b>EST</b>	Pinguldage vaheldumisi
<b>LAT</b>	Pielveiciet pamišus
<b>LIT</b>	Užsukinėkite pakaitomis
<b>PL</b>	Śruby dokręcaj naprzemiennie
<b>RU</b>	Затягивайте попеременно

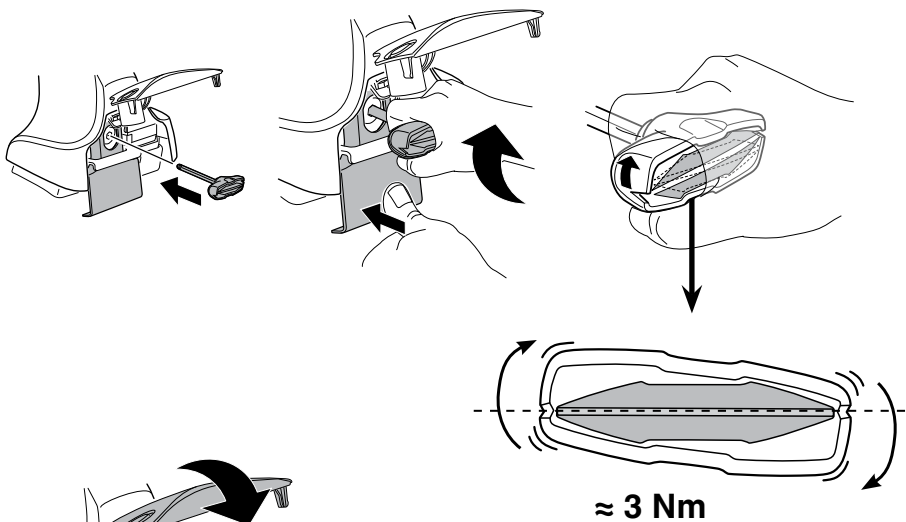
<b>CZ</b>	Pokręřta bagažníka dokręřcaj dokręřcaj naprzemiennie.
<b>SK</b>	Dofahajte striedavo
<b>SLO</b>	Privijajte izmenično.
<b>HR</b>	Naizmjenično zategnite
<b>HU</b>	Egymástól függetlenül szorítandó
<b>GR</b>	Σφιγίγτες εναλλάξ
<b>TR</b>	Dönüşümlü sıkın

**中文** 交替拧紧

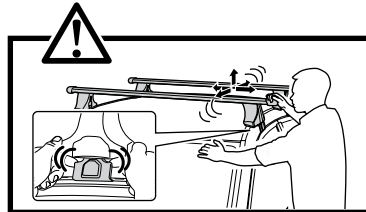
**한국어** 번갈아 가며 조이십시오.

**日本語** 交互に締め付けてください。

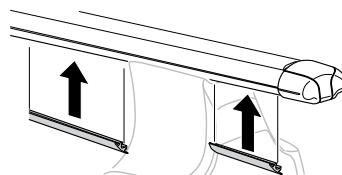
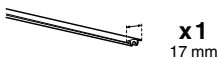
**ไทย** ชันในแบบสลับ

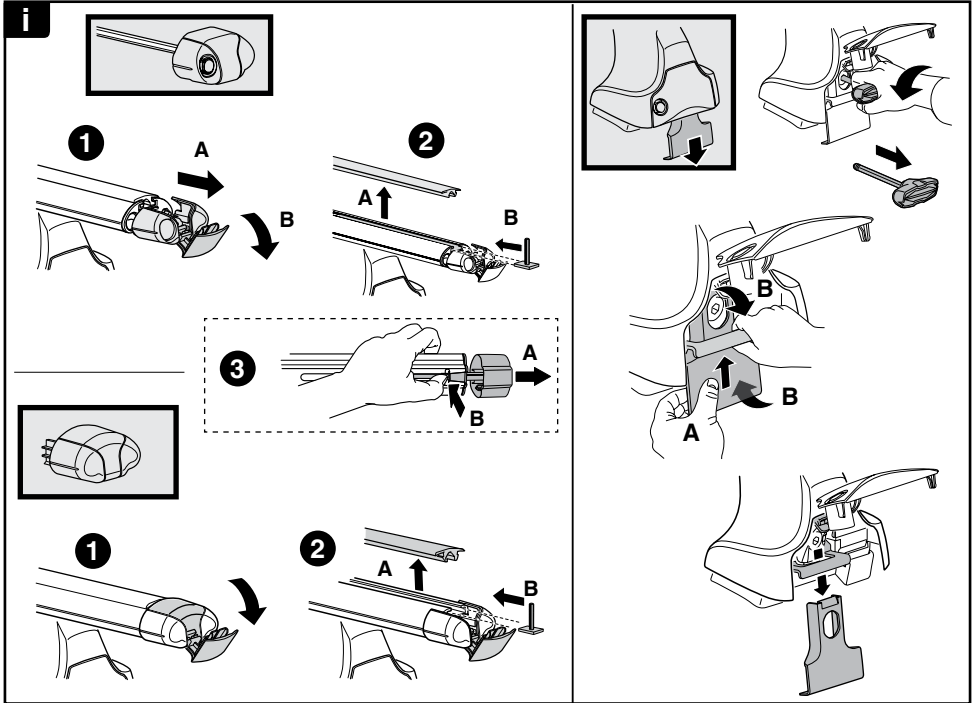
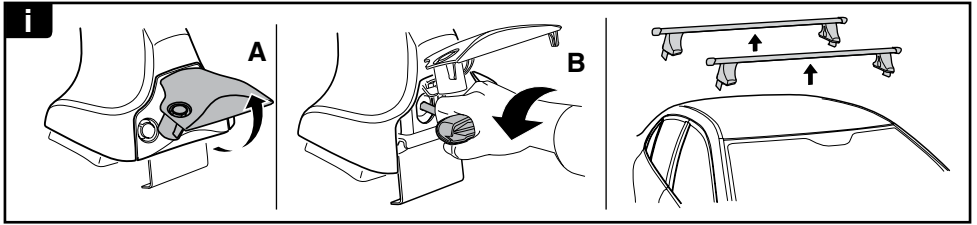


≈ 3 Nm



8





**THULE**  
SWEDEN

**ONE  
KEY  
SYSTEM**

544 (x4)

596 (x6)

588 (x8)

NA 510 (x10)

EUR 452 (x12)

ASIA