

# Kit 1631

VOLKSWAGEN Scirocco, 3-dr Coupé, 08-



**754** Rapid System  
**480R** Rapid Traverse (North America)

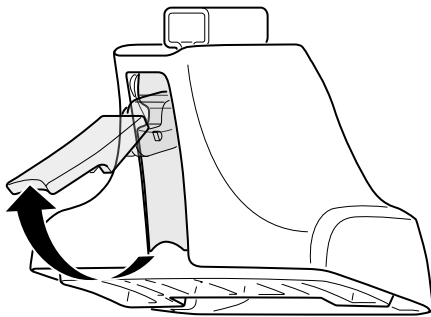


**480** Traverse (North America)





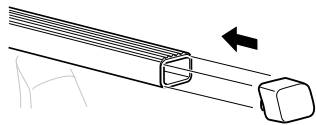
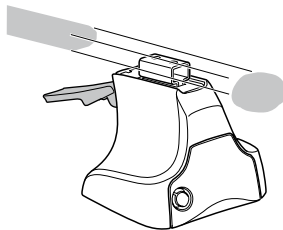
1



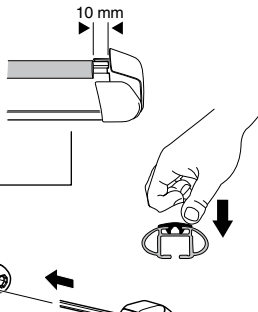
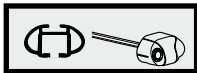
2



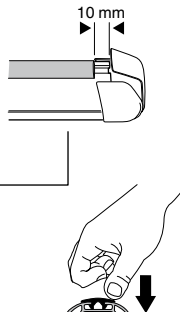
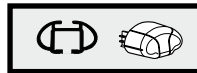
754 Rapid System  
480R Rapid Traverse  
(North America)



x4



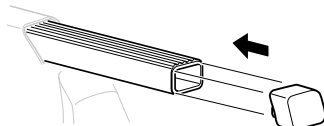
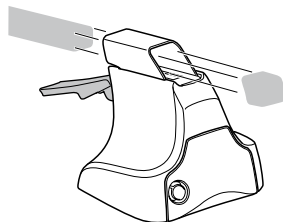
x4



x4

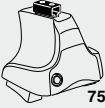


480 Traverse  
(North America)

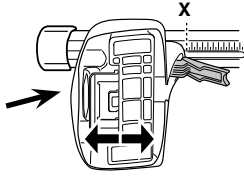


x4

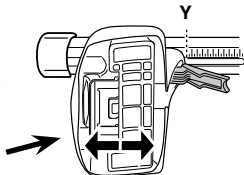
**3**



**754** Rapid System



	<b>X</b>
<b>VOLKSWAGEN Scirocco, 3-dr Coupé, 08-</b>	<b>45,5</b>



	<b>Y</b>
<b>VOLKSWAGEN Scirocco, 3-dr Coupé, 08-</b>	<b>32</b>

**3**

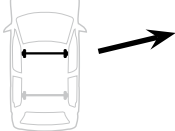


**480R** Rapid Traverse

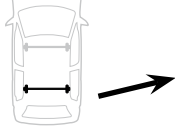


**480** Traverse

**(North America)**

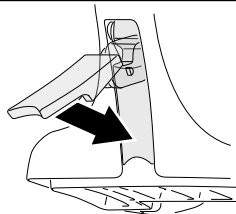


	<b>X inch</b>	<b>X mm</b>
<b>VOLKSWAGEN Scirocco, 3-dr Coupé, 08-</b>	<b>43 1/2"</b>	<b>1106 mm</b>



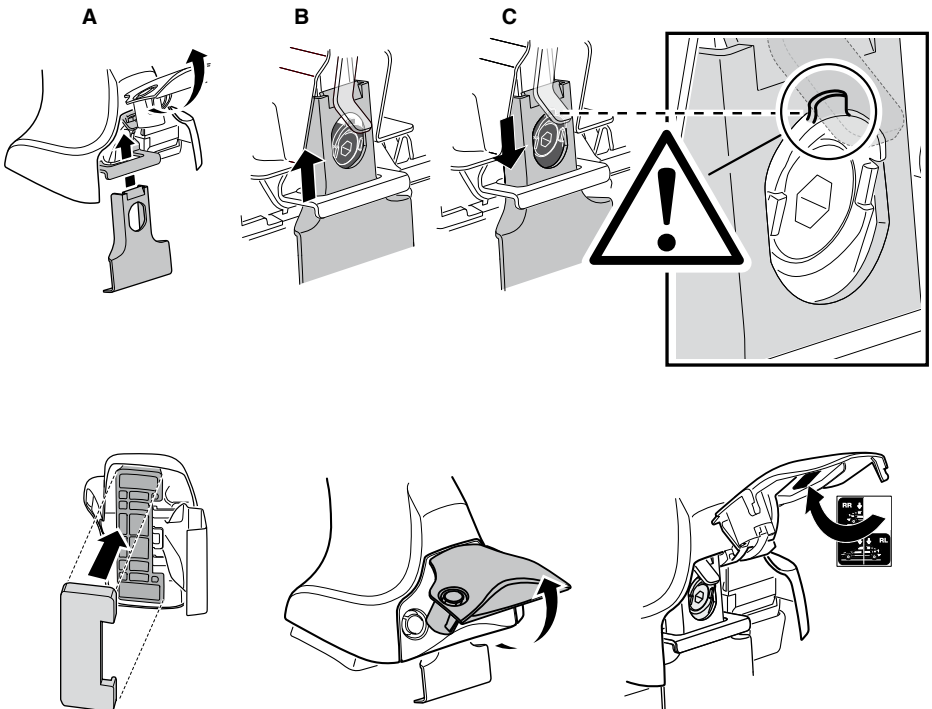
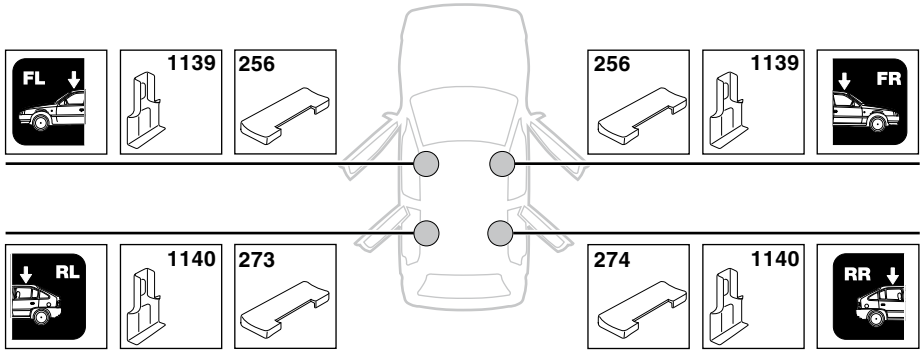
	<b>Y inch</b>	<b>Y mm</b>
<b>VOLKSWAGEN Scirocco, 3-dr Coupé, 08-</b>	<b>38 1/4"</b>	<b>971 mm</b>

**4**

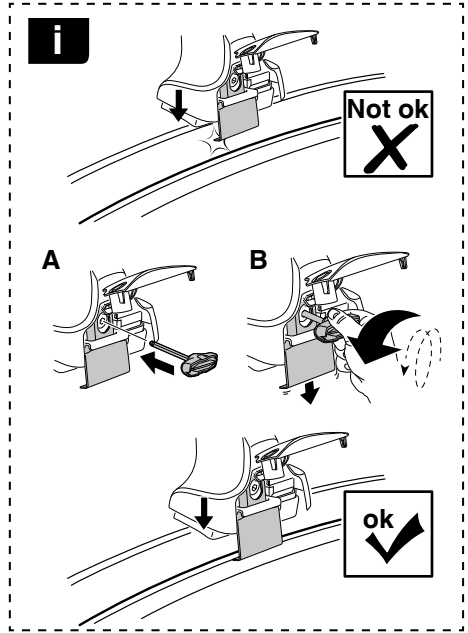
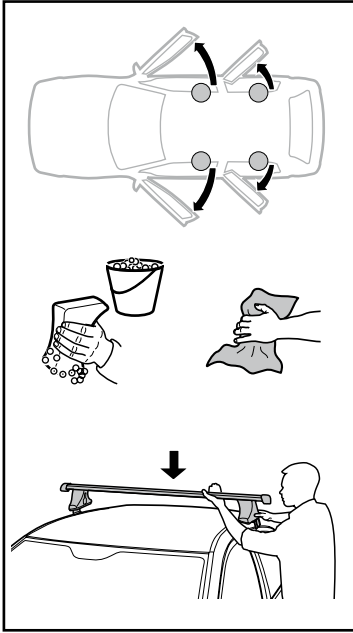


5

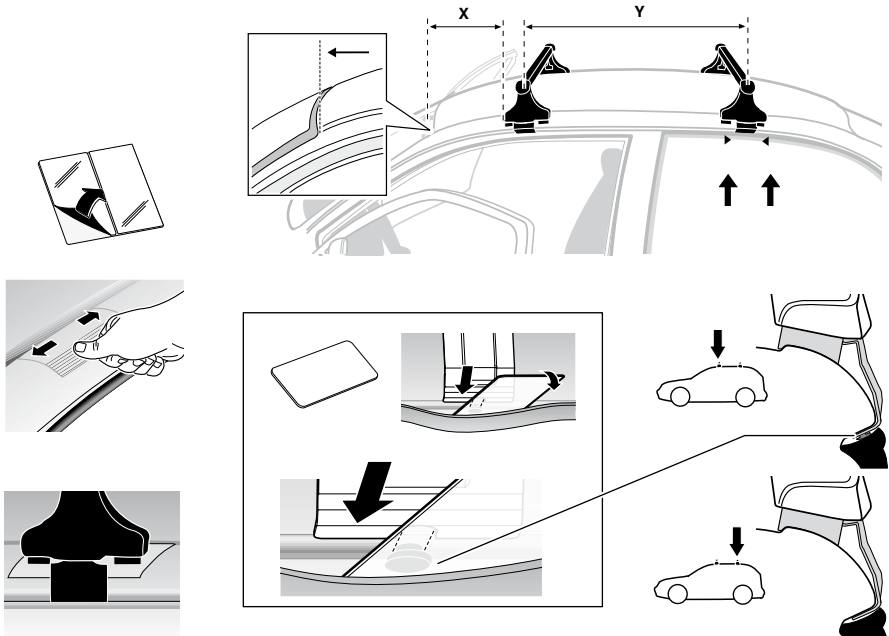
VOLKSWAGEN Scirocco, 3-dr Coupé, 08-

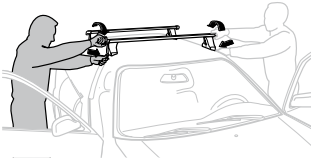


6



	X mm	Y mm	X inch	Y inch
VOLKSWAGEN Scirocco, 3-dr Coupé, 08-	210 mm	755 mm	8 1/4"	29 3/4"



**7**

**GB/US** Tighten alternately  
**D** Die Schrauben abwechselnd anziehen  
**F** Serrer alternativement chaque côté  
**NL** Afwisselend aan de linker- en de rechterkant aandraaien  
**I** Alternare il serraggio delle viti  
**E** Apertar alternativamente  
**PT** Aperte alternadamente  
**S** Dra åt växelvis  
**FIN** Kierrä vuorotellen  
**EST** Pinguldage vaheldumisi  
**LAT** Pievelciēt pamišus  
**LIT** Užsukinėkite pakaitomis  
**PL** Śruby dokręcaj naprzemiennie  
**RU** Затягивайте попеременно

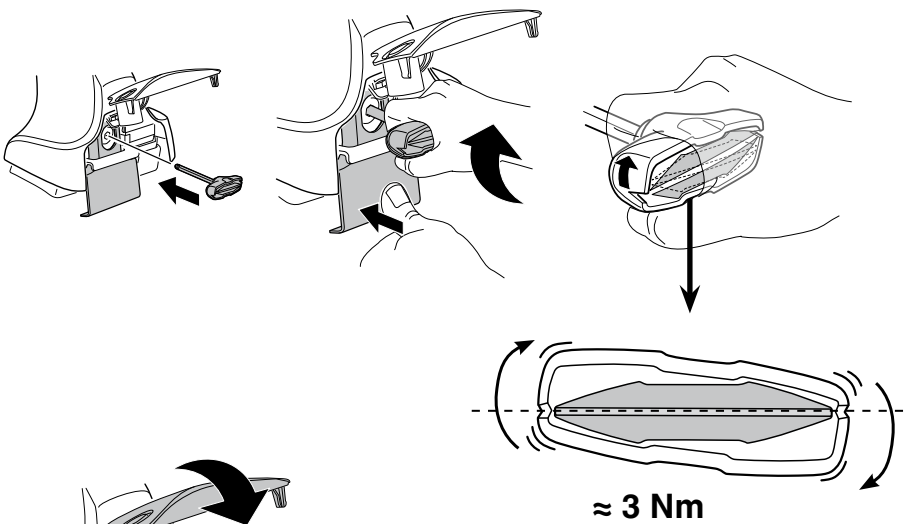
**CZ** Pokręťta bagażnika dokręcaj naprzemiennie.  
**SK** Dofahajte striedavo  
**SLO** Privijajte izmenično.  
**HR** Naizmjenočno zategnite  
**HU** Egymástól függetlenül szorítandó  
**GR** Σφιγίγεται εναλλάξ  
**TR** Dönüşümlü sıkın

**中文** 交替拧紧

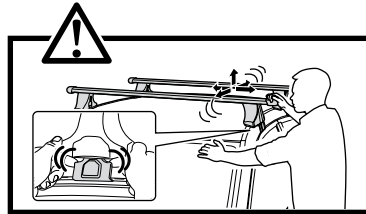
**한국어** 번갈아 가며 조이십시오.

**日本語** 交互に締め付けてください。

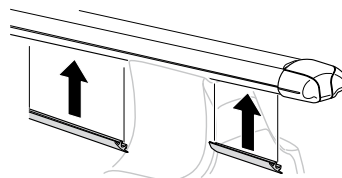
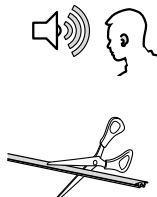
**ไทย** ชันในแบบสลับ

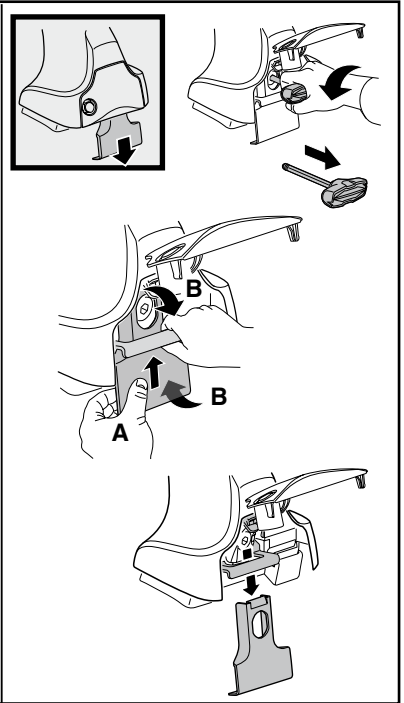
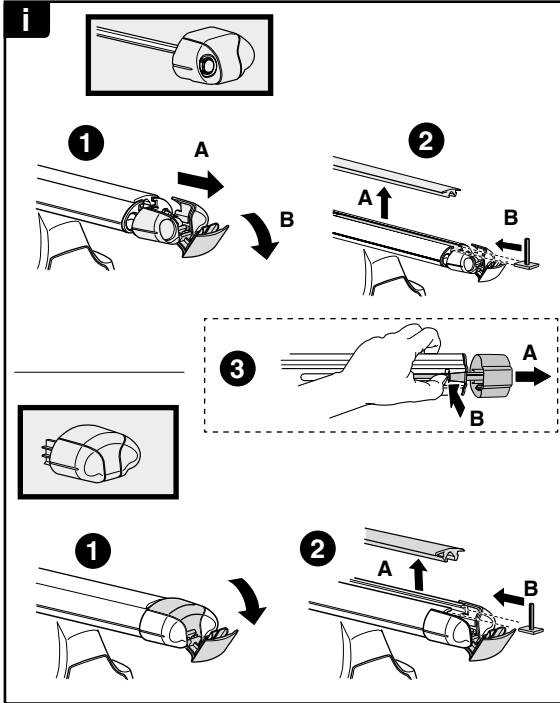


≈ 3 Nm

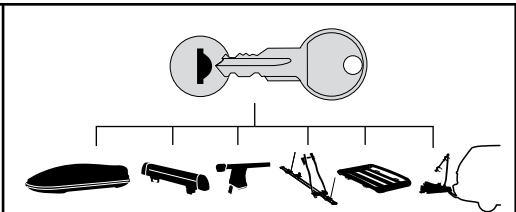
**8**






x1  
17 mm





**THULE**  
SWEDEN  
**ONE  
KEY  
SYSTEM**



-  **544** (x4)
  -  **596** (x6)
  -  **588** (x8)
  -  **510** (x10)
  -  **452** (x12)
- NA  
EUR  
ASIA



WW ▶ Thule Sweden AB, Box 69, 330 33 Hillerstorp, SWEDEN  
NA ▶ Thule Inc., 42 Silvermine Road, Seymour, Connecticut 06483, USA

info@thule.com  
customer.service@thule.com

 www.thule.com