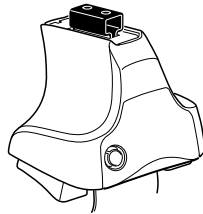


# Kit 1629

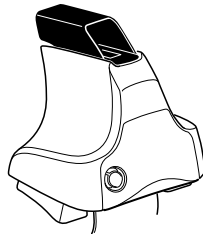
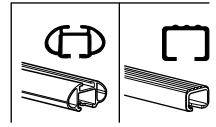
KIA K5, 4-dr Sedan, 10–

KIA Optima, 4-dr Sedan, 10– / \*11–

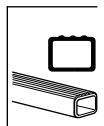
\*North America



754 Rapid System  
480R Rapid Traverse (North America)

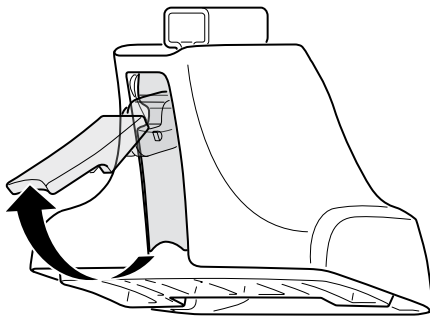


480 Traverse (North America)





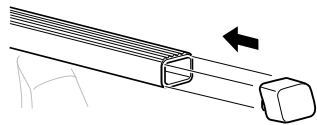
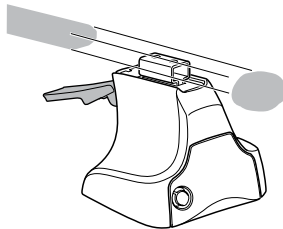
1



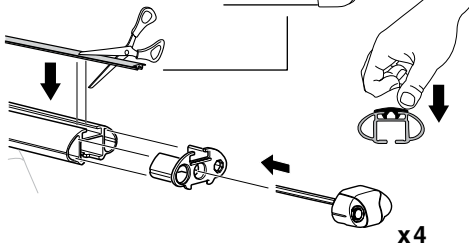
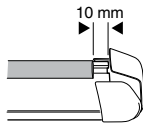
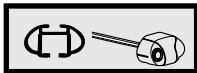
2



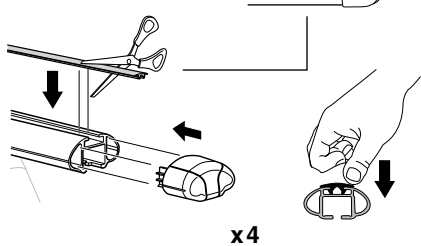
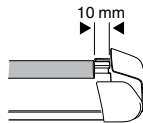
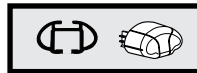
754 Rapid System  
480R Rapid Traverse  
(North America)



x4



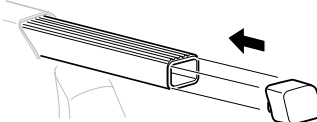
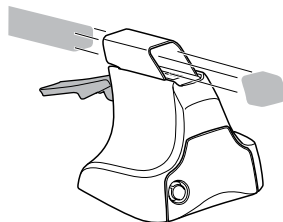
x4



x4

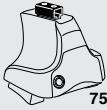


480 Traverse  
(North America)

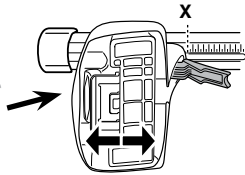


x4

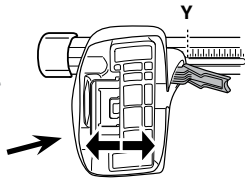
**3**



**754 Rapid System**



	<b>X</b>
<b>KIA K5, 4-dr Sedan, 10-</b>	<b>43,5</b>
<b>KIA Optima, 4-dr Sedan, 10- / *11-</b>	<b>43,5</b>



	<b>Y</b>
<b>KIA K5, 4-dr Sedan, 10-</b>	<b>38,5</b>
<b>KIA Optima, 4-dr Sedan, 10- / *11-</b>	<b>38,5</b>

**3**

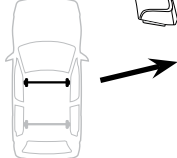


**480R Rapid Traverse**

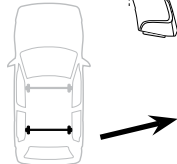


**480 Traverse**

**(North America)**

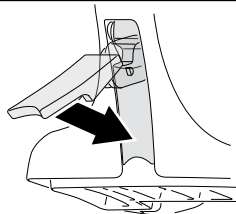


	<b>X inch</b>	<b>X mm</b>
<b>KIA K5, 4-dr Sedan, 10-</b>	<b>42 3/4"</b>	<b>1086 mm</b>
<b>KIA Optima, 4-dr Sedan, 10- / *11-</b>	<b>42 3/4"</b>	<b>1086 mm</b>



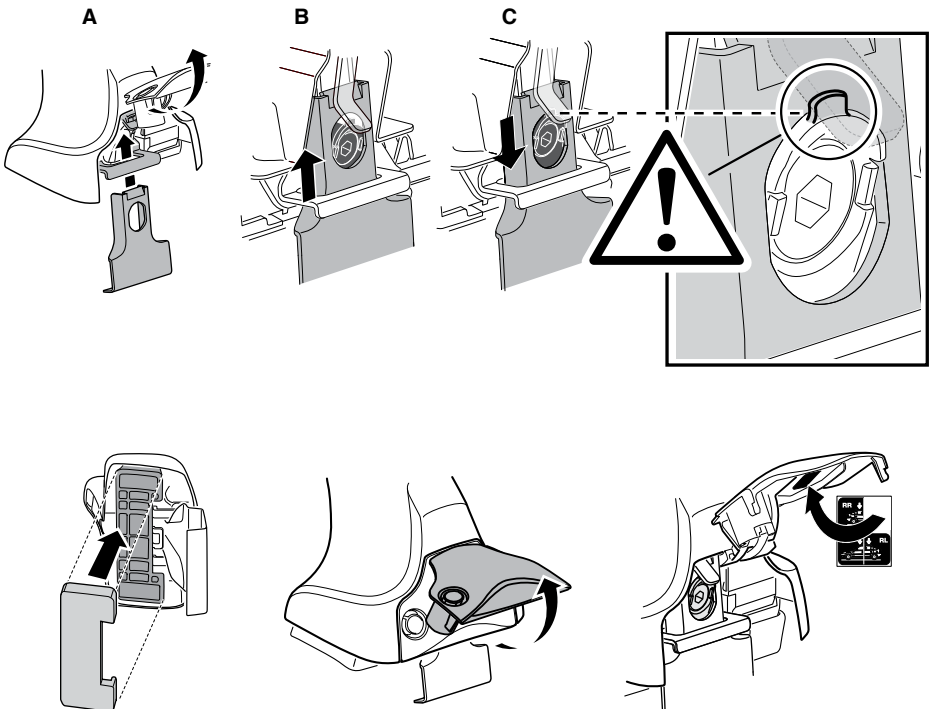
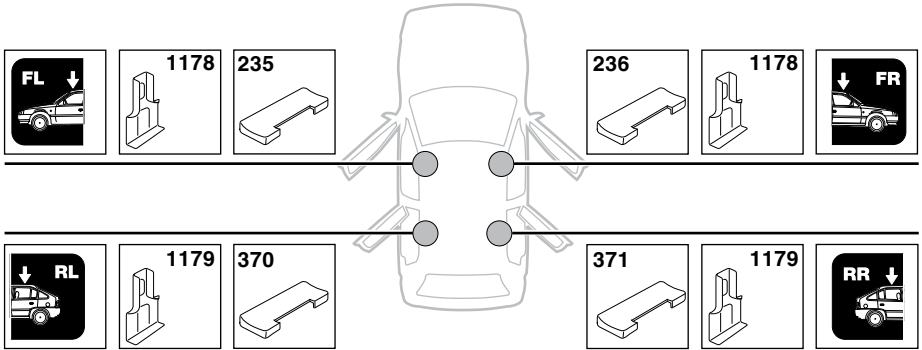
	<b>Y inch</b>	<b>Y mm</b>
<b>KIA K5, 4-dr Sedan, 10-</b>	<b>40 3/4"</b>	<b>1036 mm</b>
<b>KIA Optima, 4-dr Sedan, 10- / *11-</b>	<b>40 3/4"</b>	<b>1036 mm</b>

**4**

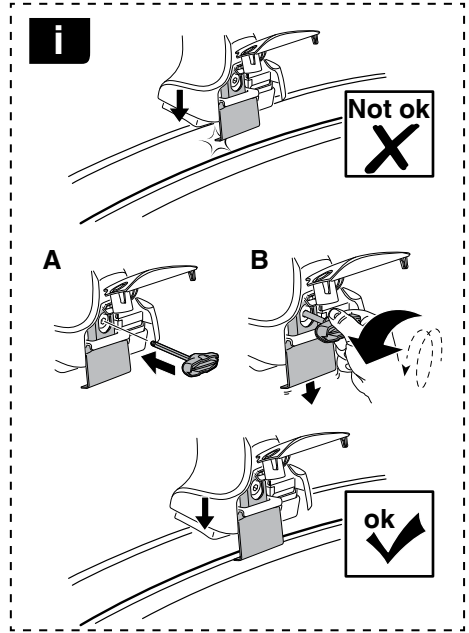
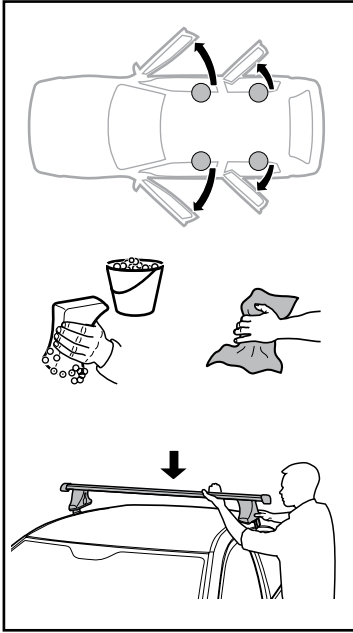


# 5

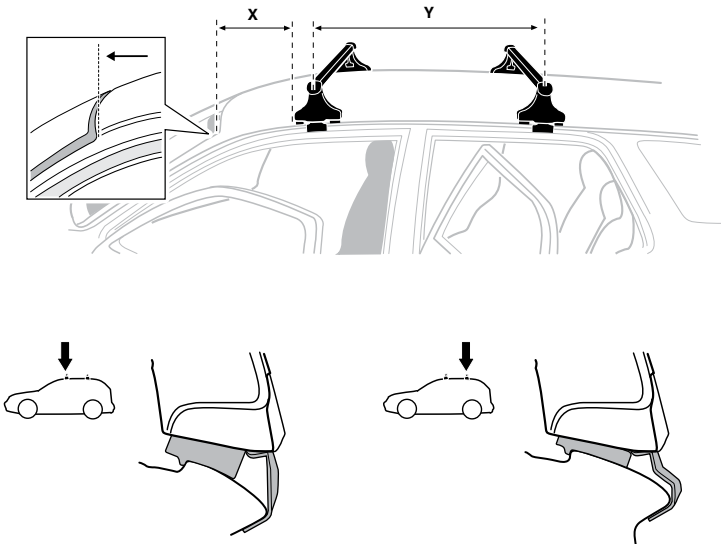
KIA K5, 4-dr Sedan, 10–  
KIA Optima, 4-dr Sedan, 10– / \*11–

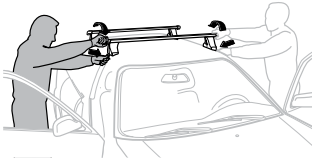


6



	X mm	Y mm	X inch	Y inch
<b>KIA K5, 4-dr Sedan, 10-</b>	230 mm	665 mm	9"	26 1/8"
<b>KIA Optima, 4-dr Sedan, 10- / *11-</b>	230 mm	665 mm	9"	26 1/8"



**7**

**GB/US** Tighten alternately  
**D** Die Schrauben abwechselnd anziehen  
**F** Serrer alternativement chaque côté  
**NL** Afwisselend aan de linker- en de rechterkant aandraaien  
**I** Alternare il serraggio delle viti  
**E** Apertar alternativamente  
**PT** Aperte alternadamente  
**S** Dra åt växelvis  
**FIN** Kierrä vuorotellen  
**EST** Pinguldage vaheldumisi  
**LAT** Pieļieciet pamišus  
**LIT** Užsukinėkite pakaitomis  
**PL** Śruby dokręcaj naprzemiennie  
**RU** Затягивайте попеременно

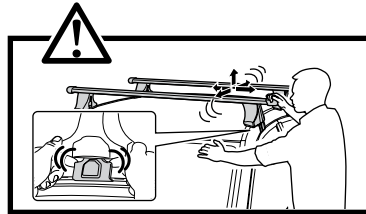
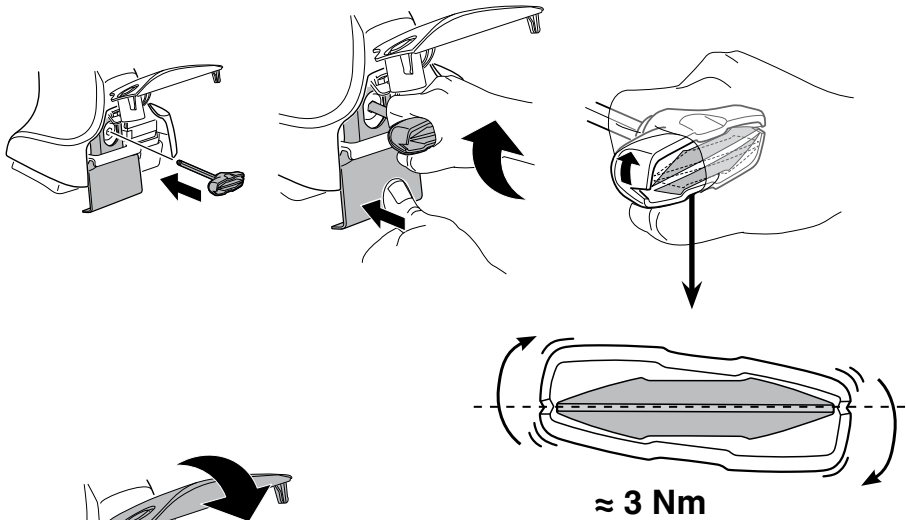
**CZ** Pokręťta bagażnika dokręcaj naprzemiennie.  
**SK** Dofahajte striedavo  
**SLO** Privijajte izmenično.  
**HR** Naizmjenočno zategnite  
**HU** Egymástól függetlenül szorítandó  
**GR** Σφιγίγες εναλλάξ  
**TR** Dönüşümlü sıkın

**中文** 交替拧紧

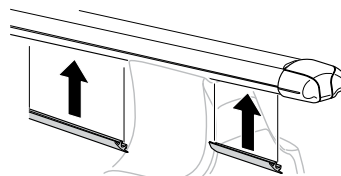
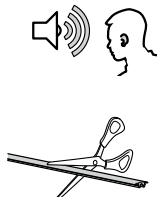
**한국어** 번갈아 가며 조이십시오.

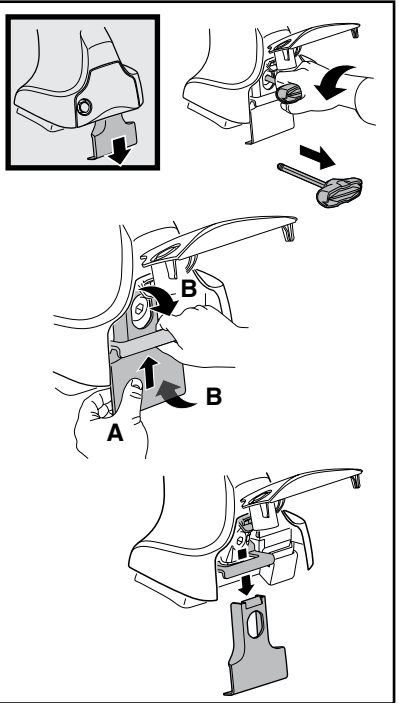
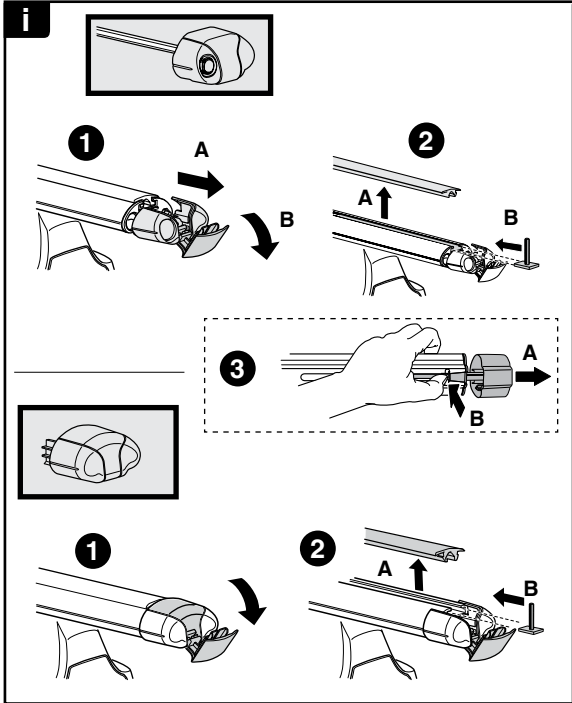
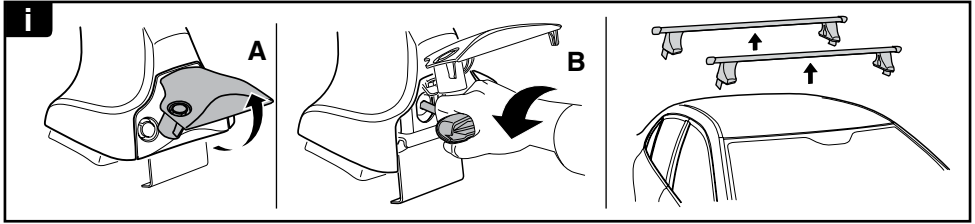
**日本語** 交互に締め付けてください。

**ไทย** ชันในแบบสลับ

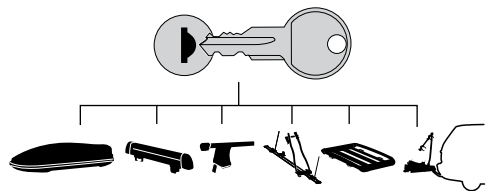
**8**

**x1**  
17 mm

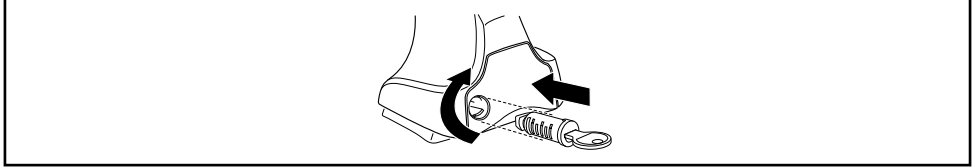




**THULE**  
SWEDEN  
**ONE  
KEY  
SYSTEM**



		(x4)
		(x6)
		(x8)
NA		(x10)
EUR		(x12)
ASIA		



WW ▶ Thule Sweden AB, Box 69, 330 33 Hillerstorp, SWEDEN  
NA ▶ Thule Inc., 42 Silvermine Road, Seymour, Connecticut 06483, USA

info@thule.com  
customer.service@thule.com

www.thule.com