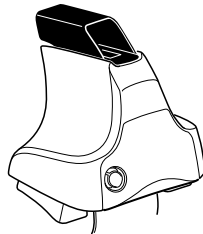
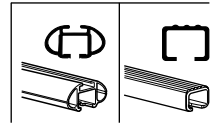


Kit 1625

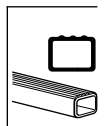
AUDI A7, 5-dr Hatchback, 10-



754 Rapid System
480R Rapid Traverse (North America)



480 Traverse (North America)

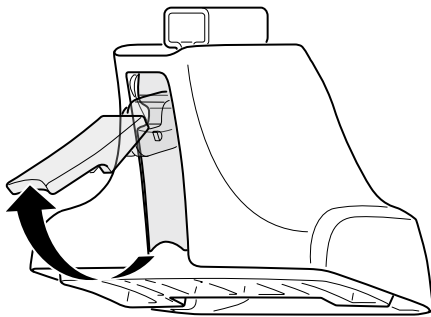


- 754 Rapid System: x1 (box), x4 (square), x4 (cylinder)
- 480R Rapid Traverse (North America): x4 (mount), x4 (screw)
- 754 Rapid System: x1 (ruler)
- 480R Rapid Traverse (North America): x4 (mount), x4 (screw), x4 (square)
- 480 Traverse (North America): x1 (ruler), x4 (mount), x4 (screw), x4 (square)

- (North America): x2 (bar), x2 (rod), x2 (rod), x2 (rod), x4 (nut), x4 (nut)
- (North America): x1 (rod), x2 (rod), x2 (rod), x2 (rod), x4 (nut)
- (North America): x2 (rod), x2 (rod), x2 (rod), x2 (rod), x2 (rod)

- 1147 x4
- 204 x2
- 206 x2
- 50993 x2
- FR/RR, FL/RL x1
- x1 (plate)

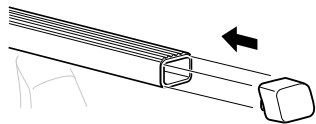
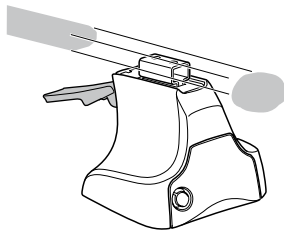
1



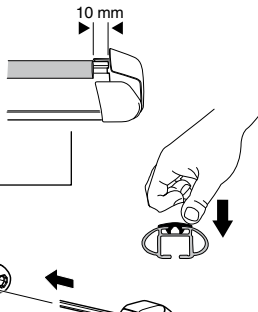
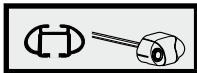
2



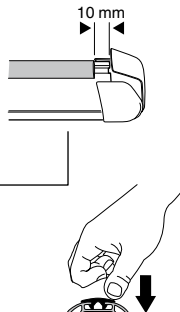
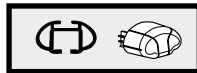
754 Rapid System
480R Rapid Traverse
(North America)



x4



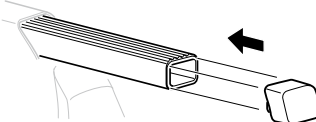
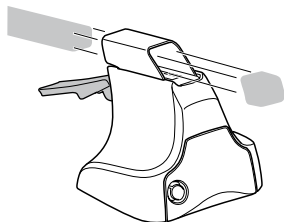
x4



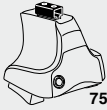
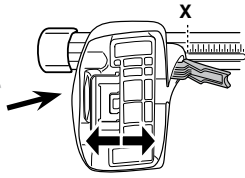
x4



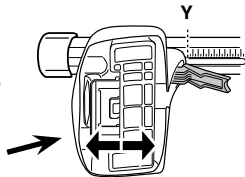
480 Traverse
(North America)



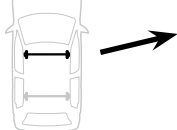
x4

3**754** Rapid System

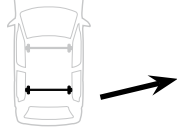
	X
AUDI A7, 5-dr Hatchback, 10-	43



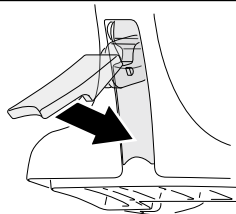
	Y
AUDI A7, 5-dr Hatchback, 10-	39,5

3**480R** Rapid Traverse**480** Traverse**(North America)**

	X inch	X mm
AUDI A7, 5-dr Hatchback, 10-	42 1/2"	1081 mm

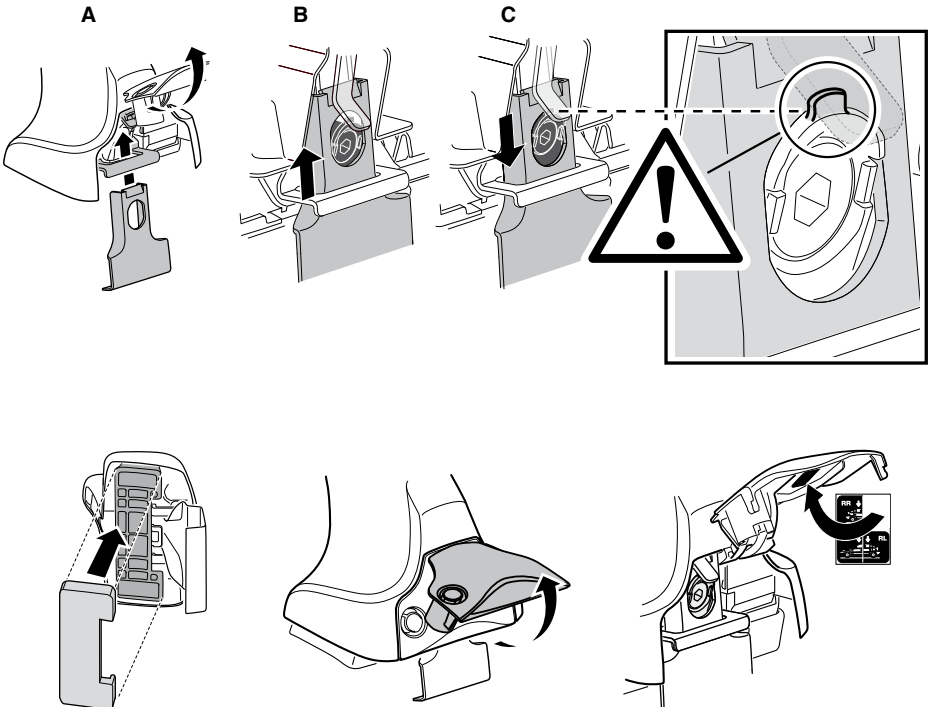
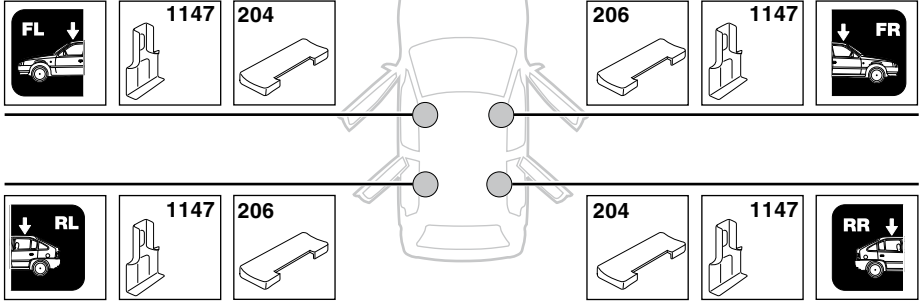


	Y inch	Y mm
AUDI A7, 5-dr Hatchback, 10-	41 1/8"	1046 mm

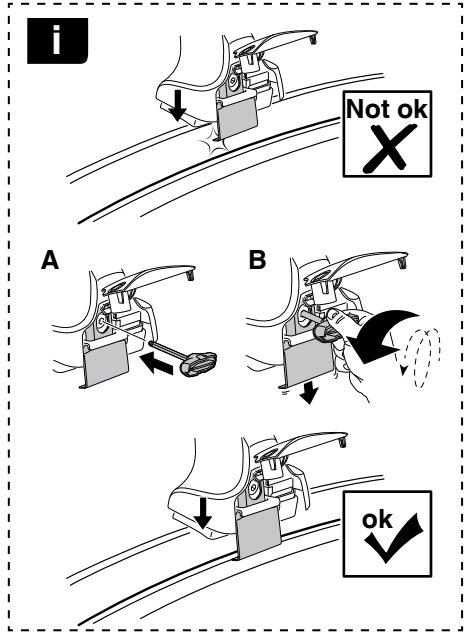
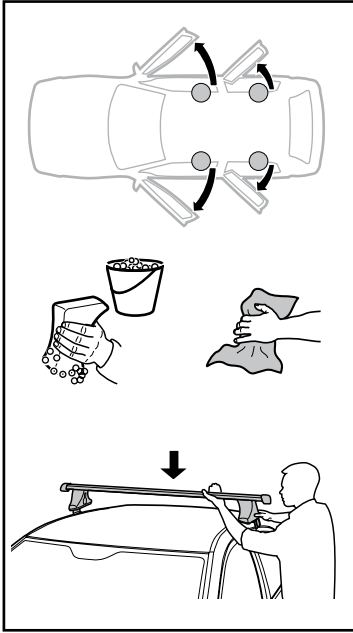
4

5

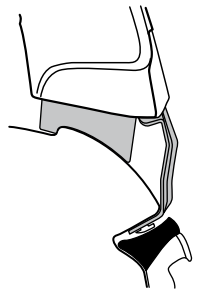
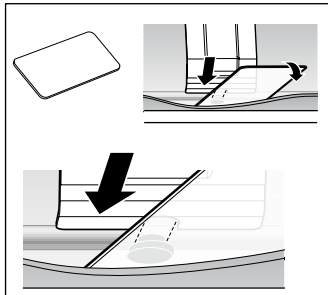
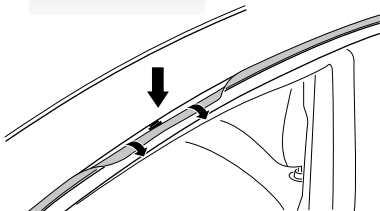
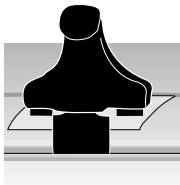
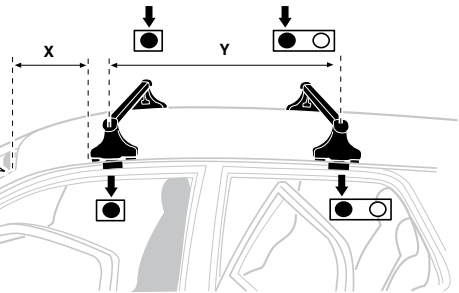
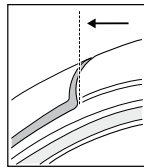
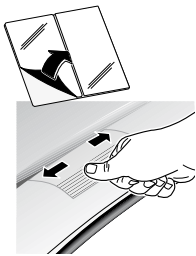
AUDI A7, 5-dr Hatchback, 10-



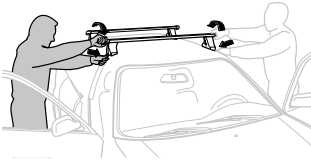
6



	X mm	Y mm	X inch	Y inch
AUDI A7, 5-dr Hatchback, 10-	180 mm	712 mm	7 1/8"	28"



7



GB/US	Tighten alternately
D	Die Schrauben abwechselnd anziehen
F	Serrer alternativement chaque côté
NL	Afwisselend aan de linker- en de rechterkant aandraaien
I	Alternare il serraggio delle viti
E	Apertar alternativamente
PT	Aperte alternadamente
S	Dra åt växelvis
FIN	Kierrä vuorotellen
EST	Pinguldage vaheldumisi
LAT	Pielveiciet pamišus
LIT	Užsukinėkite pakaitomis
PL	Śruby dokręcaj naprzemiennie
RU	Загряивайте попеременно

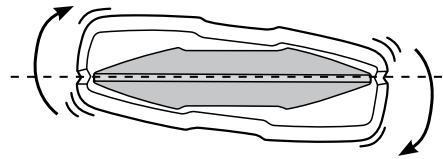
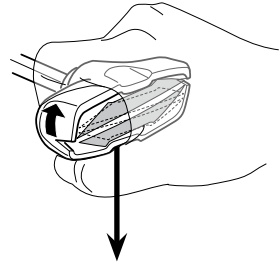
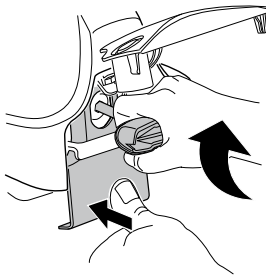
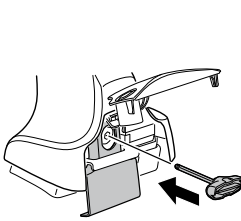
CZ	Pokręřta багаžnika dokręcaj naprzemiennie.
SK	Dofahajte striedavo
SLO	Privijajte izmenično.
HR	Naizmjenično zategnite
HU	Egymástól függetlenül szorítandó
GR	Σφιγίγτες εναλλάξ
TR	Dönüşümlü sıkın

中文 交替拧紧

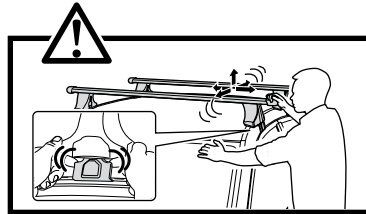
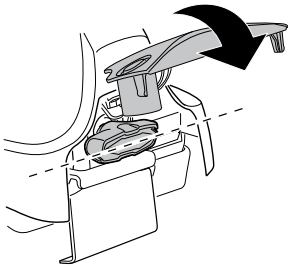
한국어 번갈아 가며 조이십시오.

日本語 交互に締め付けてください。

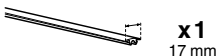
ไทย ชันในแบบสลับ



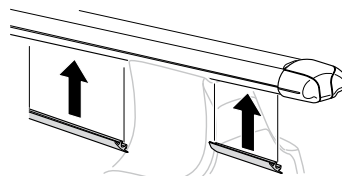
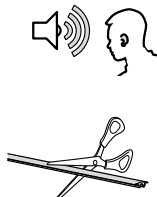
≈ 3 Nm

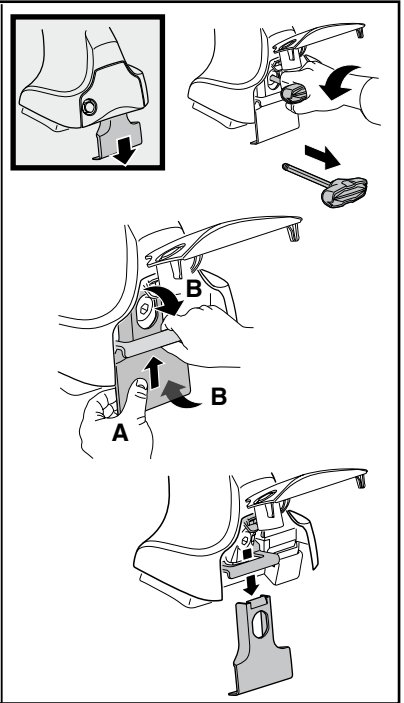
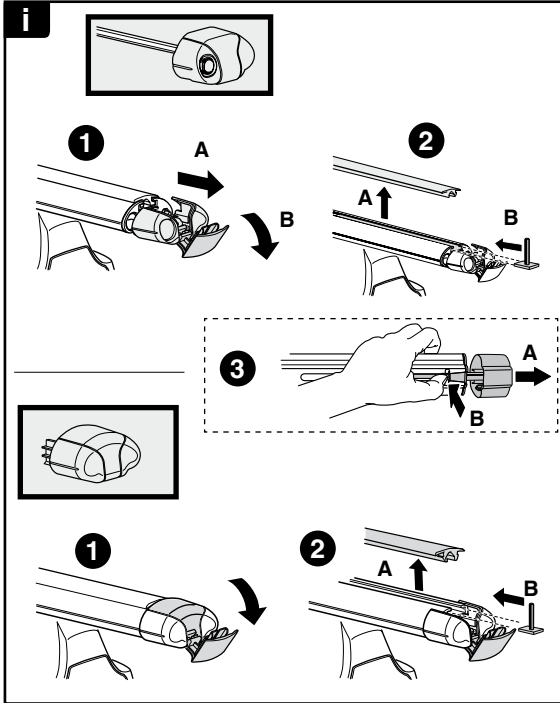


8

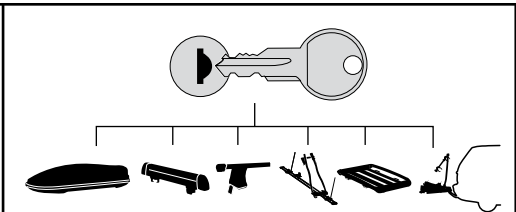


x1
17 mm

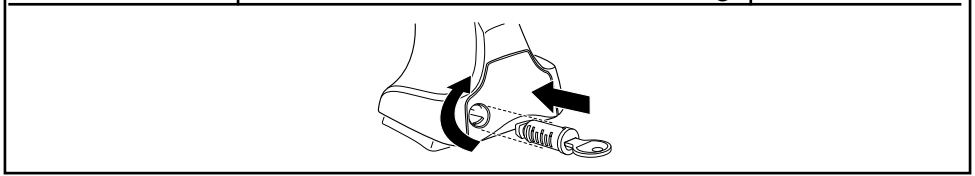




THULE
SWEDEN
**ONE
KEY
SYSTEM**



- 544** (x4)
 - 596** (x6)
 - 588** (x8)
 - 510** (x10)
 - 452** (x12)
- NA
EUR
ASIA



WW ▶ Thule Sweden AB, Box 69, 330 33 Hillerstorp, SWEDEN
NA ▶ Thule Inc., 42 Silvermine Road, Seymour, Connecticut 06483, USA

info@thule.com
customer.service@thule.com

www.thule.com