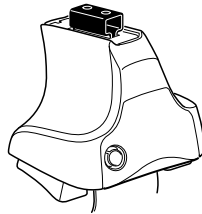


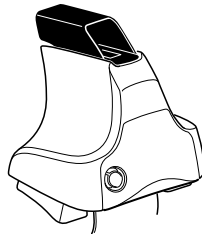
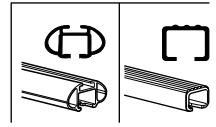
# Kit 1618

**VOLKSWAGEN Jetta VI, 4-dr Sedan, 10–**  
**VOLKSWAGEN Jetta VI, 4-dr Sedan, \*11–**

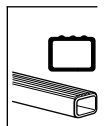
\*North America



**754** Rapid System  
**480R** Rapid Traverse (North America)



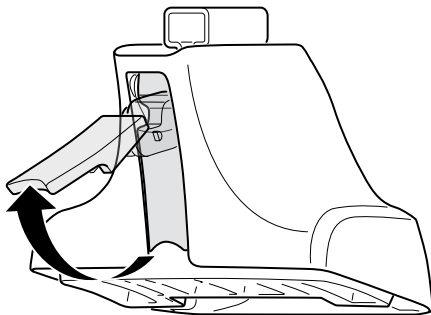
**480** Traverse (North America)







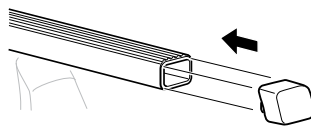
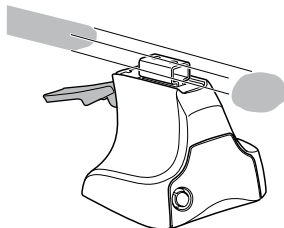
1



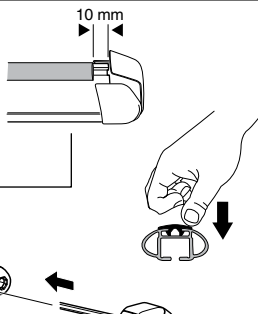
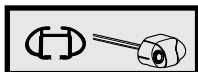
2



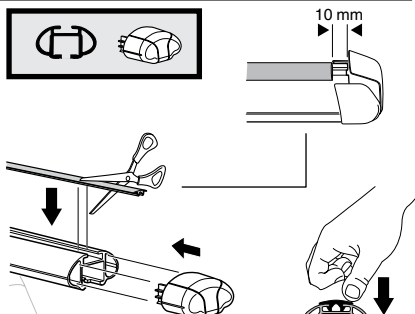
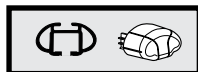
754 Rapid System  
480R Rapid Traverse  
(North America)



x4



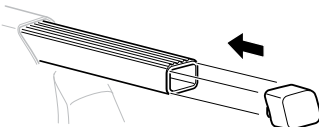
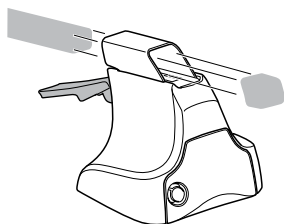
x4



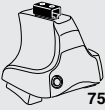
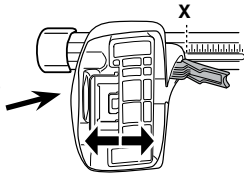
x4



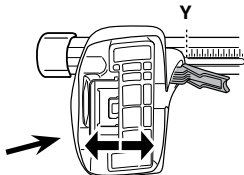
480 Traverse  
(North America)



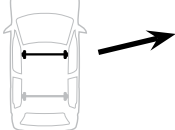
x4

**3****754** Rapid System**X**

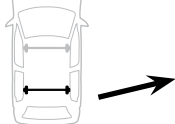
<b>VOLKSWAGEN Jetta VI, 4-dr Sedan, 10-</b>	<b>35</b>
<b>VOLKSWAGEN Jetta VI, 4-dr Sedan, *11-</b>	<b>35</b>

**Y**

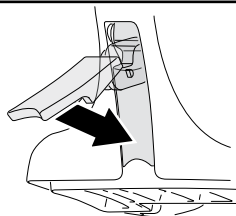
<b>VOLKSWAGEN Jetta VI, 4-dr Sedan, 10-</b>	<b>31,5</b>
<b>VOLKSWAGEN Jetta VI, 4-dr Sedan, *11-</b>	<b>30,5</b>

**3****480R** Rapid Traverse**480** Traverse**(North America)****X inch**      **X mm**

<b>VOLKSWAGEN Jetta VI, 4-dr Sedan, 10-</b>	<b>39 <sup>3</sup>/<sub>8</sub> "</b>	<b>1001 mm</b>
<b>VOLKSWAGEN Jetta VI, 4-dr Sedan, *11-</b>	<b>39 <sup>3</sup>/<sub>8</sub> "</b>	<b>1001 mm</b>

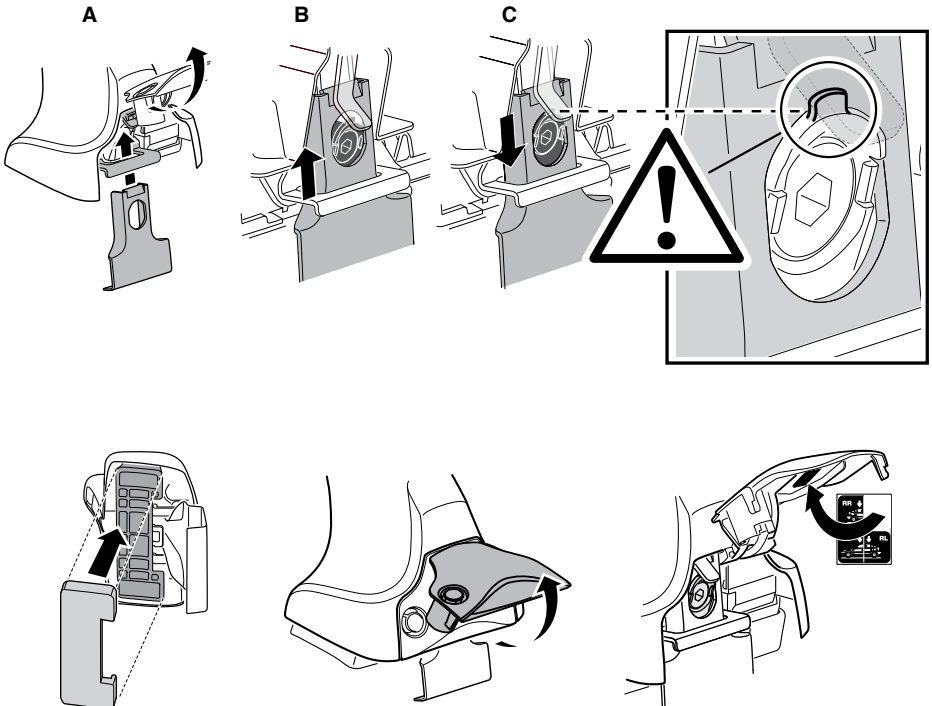
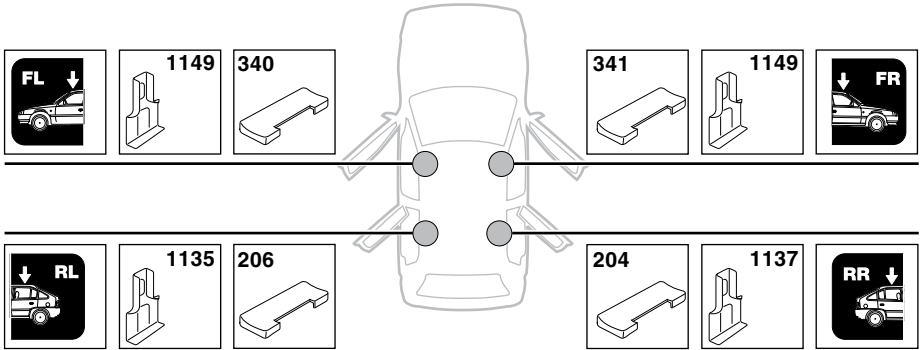
**Y inch**      **Y mm**

<b>VOLKSWAGEN Jetta VI, 4-dr Sedan, 10-</b>	<b>38 "</b>	<b>966 mm</b>
<b>VOLKSWAGEN Jetta VI, 4-dr Sedan, *11-</b>	<b>37 <sup>5</sup>/<sub>8</sub> "</b>	<b>956 mm</b>

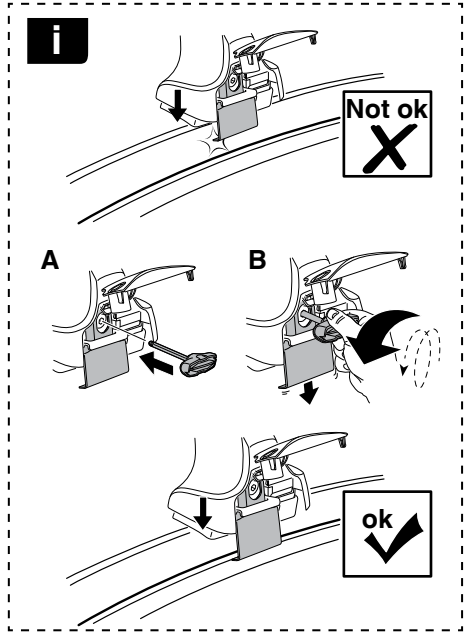
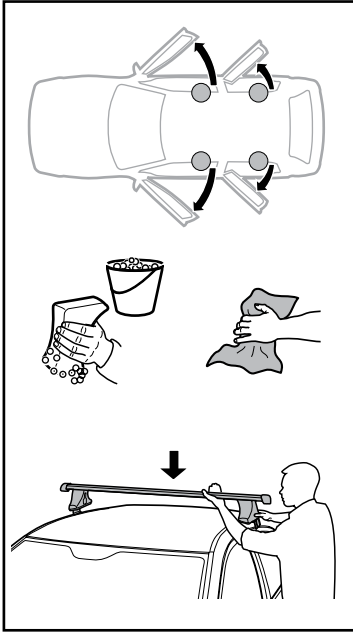
**4**

5

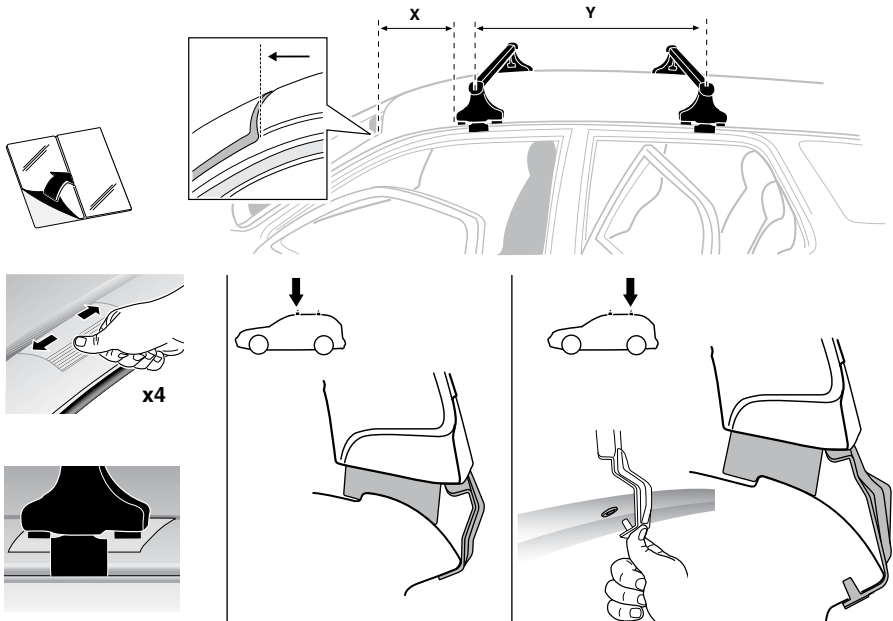
VOLKSWAGEN Jetta VI, 4-dr Sedan, 10-  
VOLKSWAGEN Jetta VI, 4-dr Sedan, \*11-



6



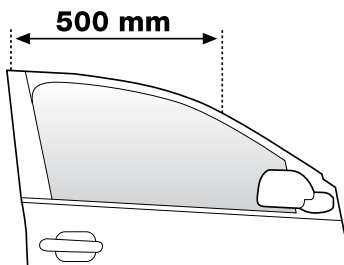
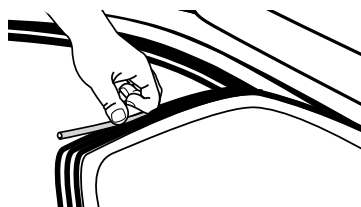
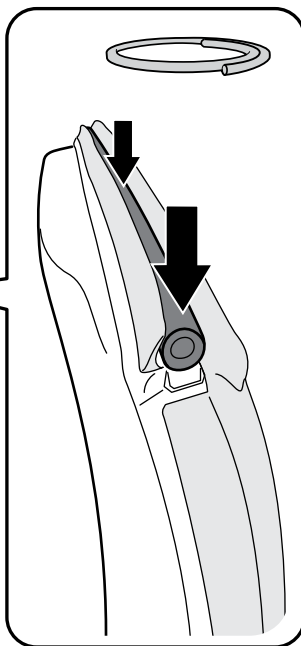
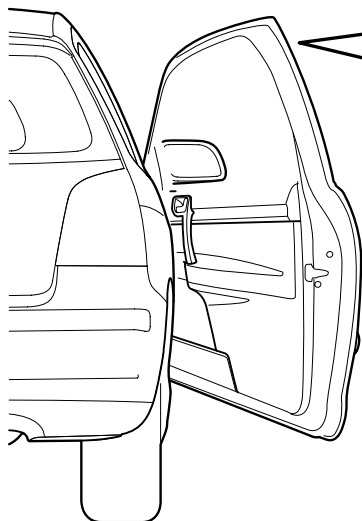
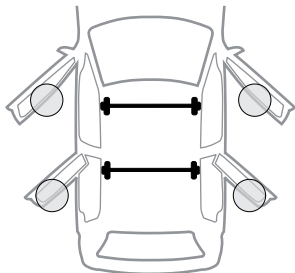
	X mm	Y mm	X inch	Y inch
VOLKSWAGEN Jetta VI, 4-dr Sedan, 10-	254 mm	790 mm	10"	31 1/8"
VOLKSWAGEN Jetta VI, 4-dr Sedan, *11-	254 mm	790 mm	10"	31 1/8"



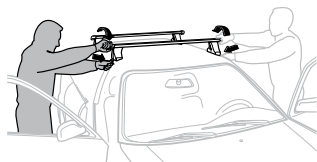
7

 x 4

VOLKSWAGEN Jetta VI, 4-dr Sedan, 10-/\*11-





**8**

**GB/US** Tighten alternately  
**D** Die Schrauben abwechselnd anziehen  
**F** Serrer alternativement chaque côté  
**NL** Afwisselend aan de linker- en de rechterkant aandraaien  
**I** Alternare il serraggio delle viti  
**E** Apertar alternativamente  
**PT** Aperte alternadamente  
**S** Dra åt växelvis  
**FIN** Kierrä vuorotellen  
**EST** Pinguldage vaheldumisi  
**LAT** Pieļieciet pamišus  
**LIT** Užsukinėkite pakaitomis  
**PL** Śruby dokręcaj naprzemiennie  
**RU** Затягивайте попеременно

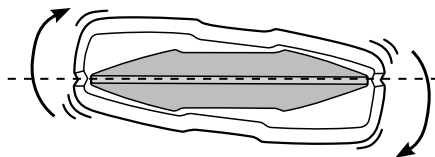
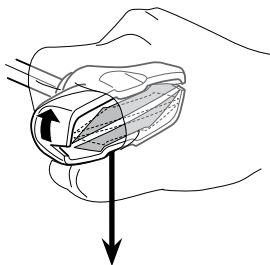
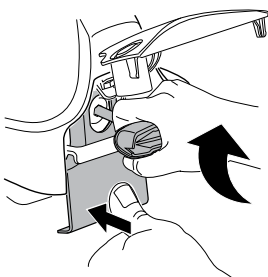
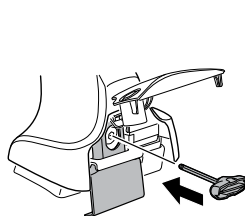
**CZ** Pokręťta bagażnika dokręcaj dokręcaj naprzemiennie.  
**SK** Dofahajte striedavo  
**SLO** Privijajte izmenično.  
**HR** Naizmjerno zategnite  
**HU** Egymástól függetlenül szorítandó  
**GR** Σφιγίγτες εναλλάξ  
**TR** Dönüşümlü sıkın

**中文** 交替拧紧

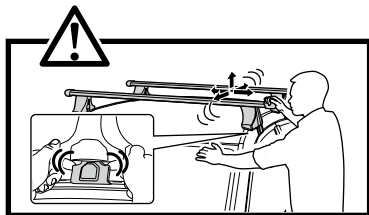
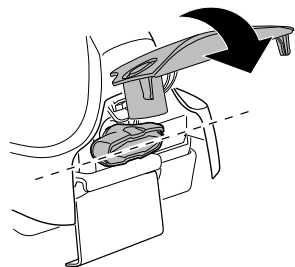
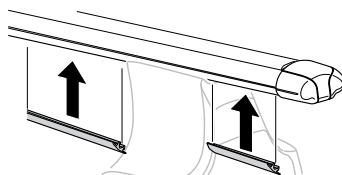
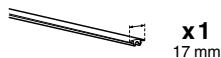
**한국어** 번갈아 가며 조이십시오.

**日本語** 交互に締め付けてください。

**ไทย** ชันในแบบสลับ

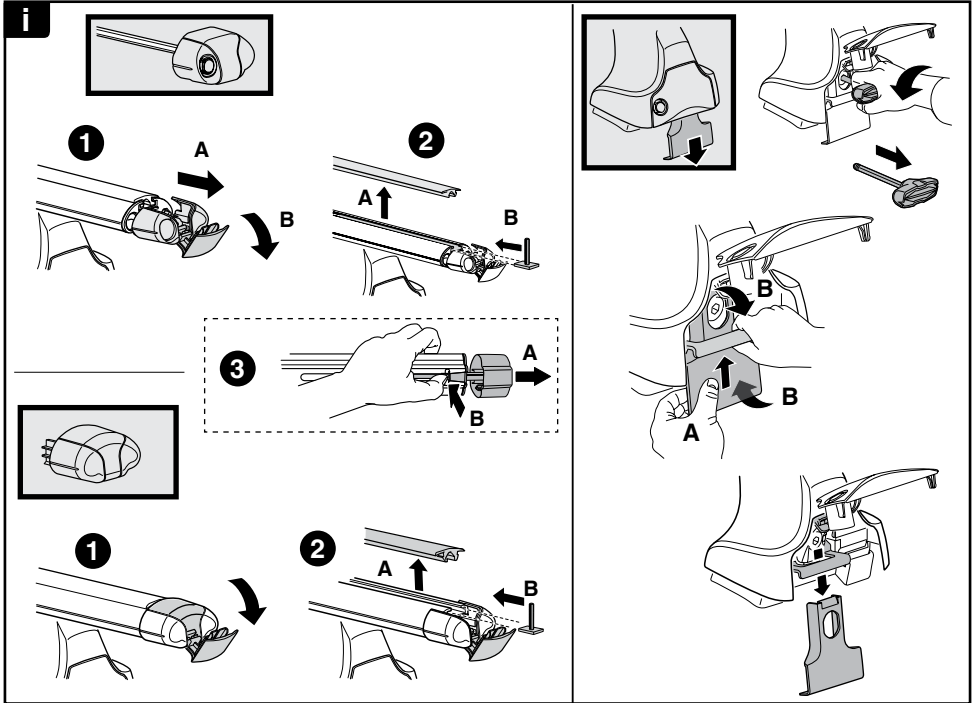
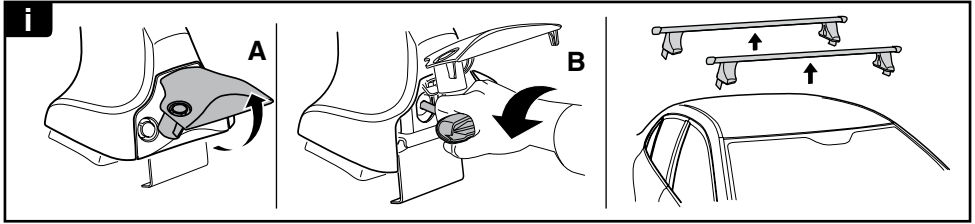


≈ 3 Nm

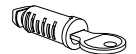
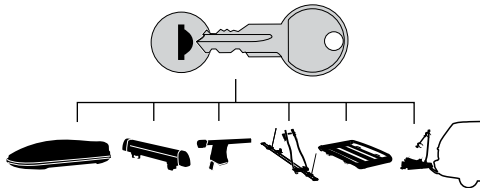
**9**







**THULE**  
SWEDEN  
**ONE  
KEY  
SYSTEM**



**544** (x4)

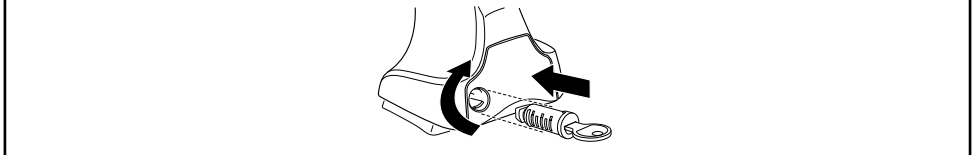
**596** (x6)

**588** (x8)

NA **510** (x10)

EUR **452** (x12)

ASIA



WW ▶ Thule Sweden AB, Box 69, 330 33 Hillerstorp, SWEDEN  
NA ▶ Thule Inc., 42 Silvermine Road, Seymour, Connecticut 06483, USA

info@thule.com  
customer.service@thule.com

www.thule.com

503-1618-02