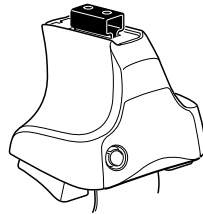
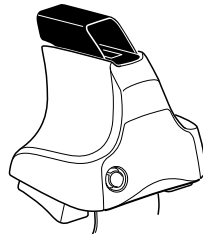
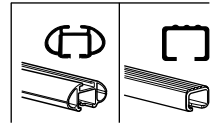


Kit 1594

SKODA Octavia, 4-dr Sedan, 04-08, 09–
SKODA Octavia, 5-dr Hatchback, 04-08, 09–



754 Rapid System
480R Rapid Traverse (North America)



480 Traverse (North America)



754 Rapid System
480R Rapid Traverse (North America)

754 Rapid System
480R Rapid Traverse (North America)

480 Traverse (North America)

(North America)

179 x 2
181 x 2
661 x 1
673 x 1
1091 x 1
1092 x 1

x 1

1



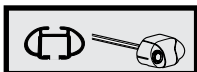
2



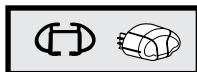
754 Rapid System
480R Rapid Traverse
(North America)



x4



x4



x4



480 Traverse
(North America)



x4

3



754 Rapid System



	X
SKODA Octavia, 4-dr Sedan, 04-08, 09-	33
SKODA Octavia, 5-dr Hatchback, 04-08, 09-	33



	Y
SKODA Octavia, 4-dr Sedan, 04-08, 09-	29,5
SKODA Octavia, 5-dr Hatchback, 04-08, 09-	29,5

3



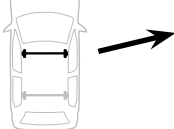
480R Rapid Traverse



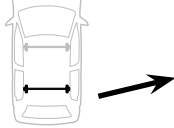
480 Traverse



(North America)



	X inch	X mm
SKODA Octavia, 4-dr Sedan, 04-08, 09-	38 ⁵/₈ "	981 mm
SKODA Octavia, 5-dr Hatchback, 04-08, 09-	38 ⁵/₈ "	981 mm



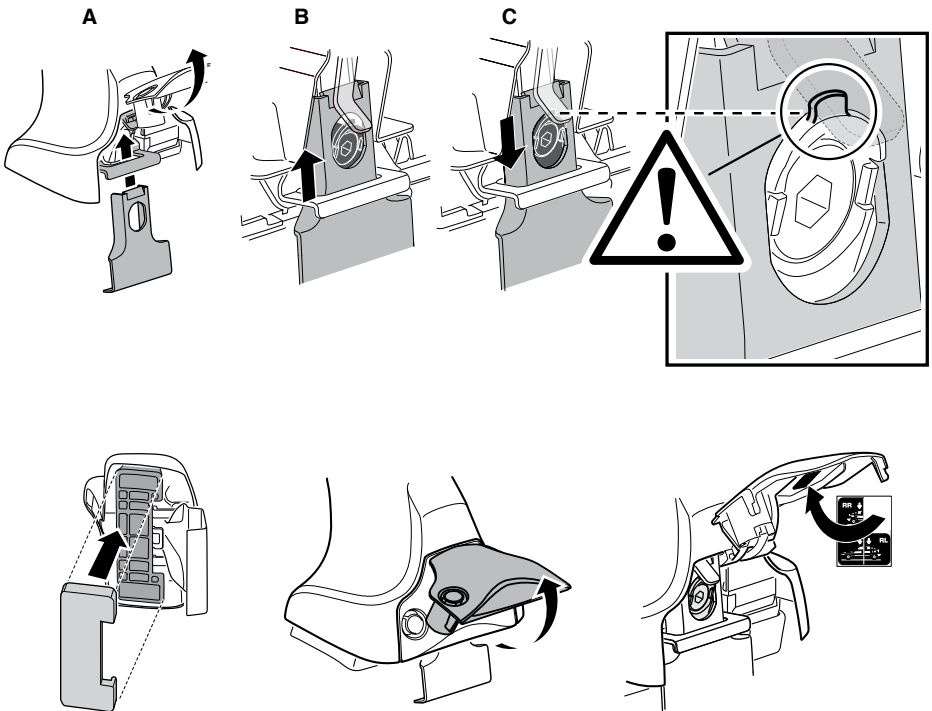
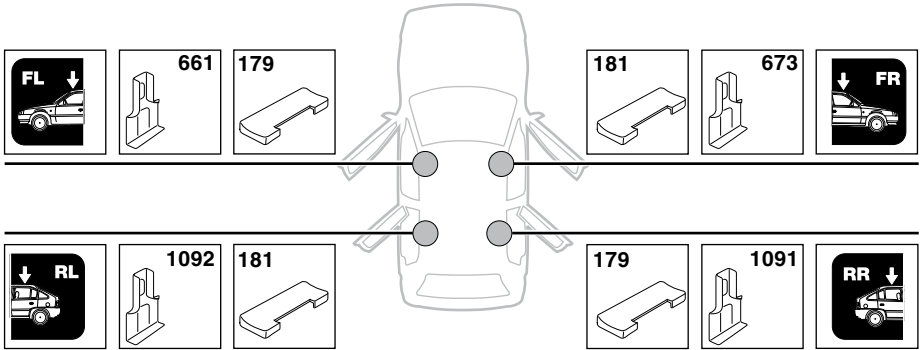
	Y inch	Y mm
SKODA Octavia, 4-dr Sedan, 04-08, 09-	37 ¹/₄ "	946 mm
SKODA Octavia, 5-dr Hatchback, 04-08, 09-	37 ¹/₄ "	946 mm

4

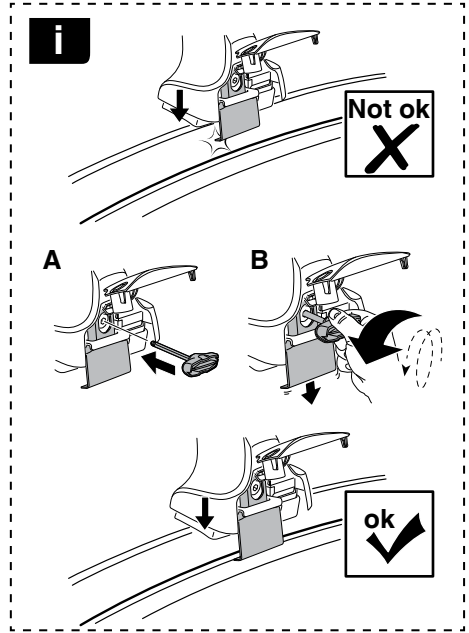


5

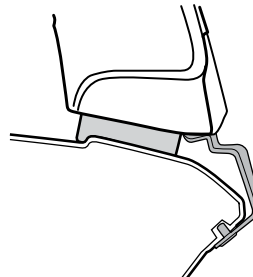
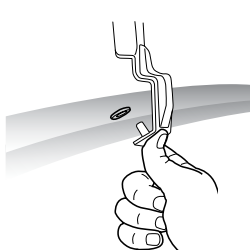
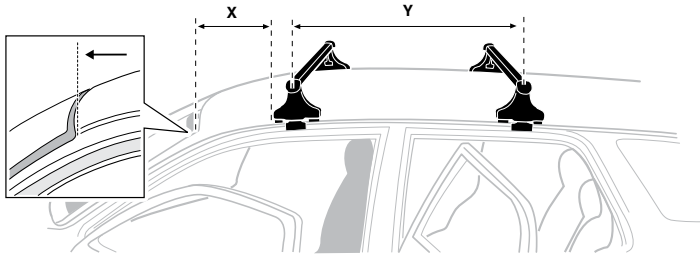
SKODA Octavia, 4-dr Sedan, 04-08, 09–
 SKODA Octavia, 5-dr Hatchback, 04-08, 09–



6



	X mm	Y mm	X inch	Y inch
SKODA Octavia, 4-dr Sedan, 04-08, 09–	450 mm	740 mm	17 3/4"	29 1/8"
SKODA Octavia, 5-dr Hatchback, 04-08, 09–	450 mm	740 mm	17 3/4"	29 1/8"



7



GB/US	Tighten alternately
D	Die Schrauben abwechselnd anziehen
F	Serrer alternativement chaque côté
NL	Afwisselend aan de linker- en de rechterkant aandraaien
I	Alternare il serraggio delle viti
E	Apertar alternativamente
PT	Aperte alternadamente
S	Dra åt växelvis
FIN	Kierrä vuorotellen
EST	Pinguldage vaheldumisi
LAT	Pielveiciet pamišus
LIT	Užsukinėkite pakaitomis
PL	Śruby dokręcaj naprzemiennie
RU	Загряивайте попеременно

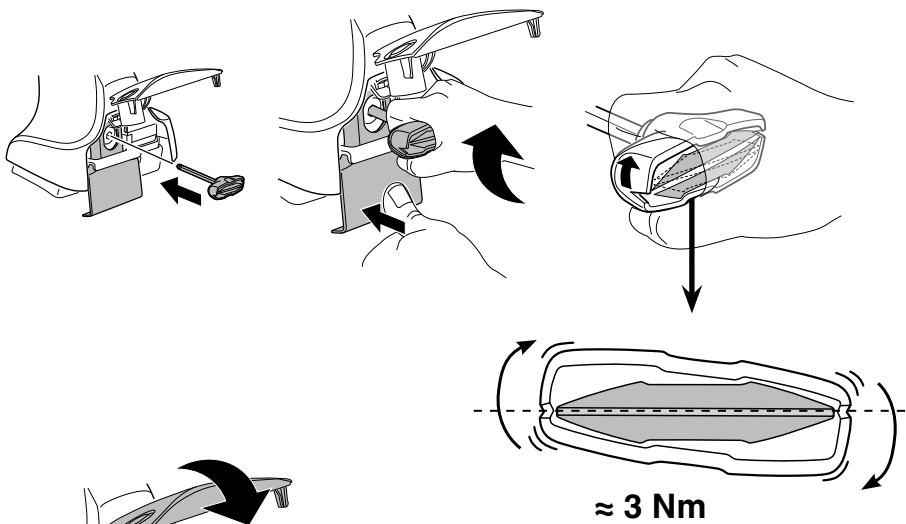
CZ	Pokręřta багаžnika dokręcaj naprzemiennie.
SK	Dofahajte striedavo
SLO	Privijajte izmenično.
HR	Naizmjenično zategnite
HU	Egymástól függetlenül szorítandó
GR	Σφιγίγτες εναλλάξ
TR	Dönüşümlü sıkın

中文 交替拧紧

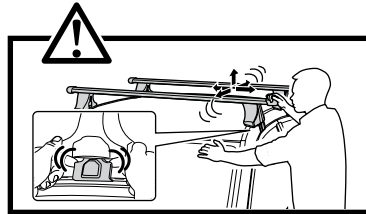
한국어 번갈아 가며 조이십시오.

日本語 交互に締め付けてください。

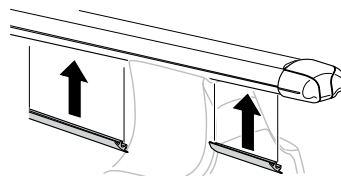
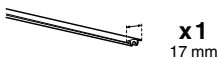
ไทย ชันในแบบสลับ



≈ 3 Nm

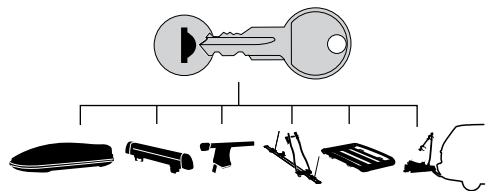


8

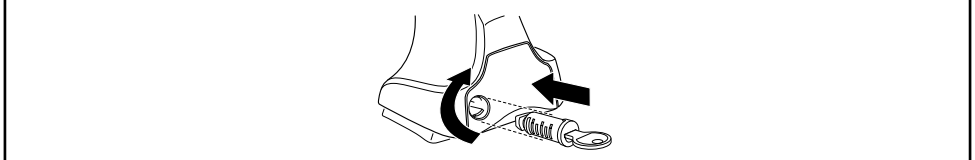




THULE
SWEDEN
**ONE
KEY
SYSTEM**



		(x4)
		(x6)
		(x8)
NA		(x10)
EUR		(x12)
ASIA		



WW ▶ Thule Sweden AB, Box 69, 330 33 Hillerstorp, SWEDEN
NA ▶ Thule Inc., 42 Silvermine Road, Seymour, Connecticut 06483, USA

info@thule.com
customer.service@thule.com

www.thule.com