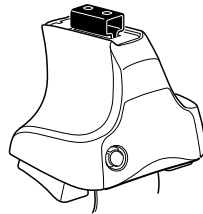


Kit 1593

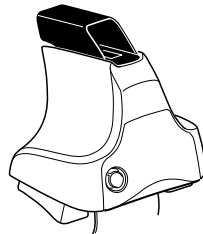
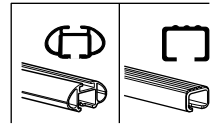
RENAULT Fluence, 4-dr Sedan, 09–

RENAULT Megane III, 5-dr Estate, 09– (Without railing)

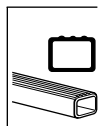
RENAULT Megane III, 5-dr Hatchback, 09–



754 Rapid System
480R Rapid Traverse (North America)



480 Traverse (North America)



Fluence
 Max.
 75 kg / 165 lbs
Megane
 Max.
 65 kg / 143 lbs

Kit XXXX

754 Rapid System
 x4

480R Rapid Traverse (North America)
 x4

x4

480 Traverse (North America)
 x4

x4

(North America)

- Component 1: x2
- Component 2: x2 (23 mm)
- Component 3: x2 (17 mm)
- Component 4: x2 (23 mm)
- Component 5: x2
- Component 6: x2
- Component 7: x2
- Component 8: x2
- Component 9: x2
- Component 10: x2
- Component 11: x2
- Component 12: x2
- Component 13: x2
- Component 14: x2
- Component 15: x2
- Component 16: x2
- Component 17: x2
- Component 18: x2
- Component 19: x2
- Component 20: x2
- Component 21: x2
- Component 22: x2
- Component 23: x2
- Component 24: x2
- Component 25: x2
- Component 26: x2
- Component 27: x2
- Component 28: x2
- Component 29: x2
- Component 30: x2
- Component 31: x2
- Component 32: x2
- Component 33: x2
- Component 34: x2
- Component 35: x2
- Component 36: x2
- Component 37: x2
- Component 38: x2
- Component 39: x2
- Component 40: x2
- Component 41: x2
- Component 42: x2
- Component 43: x2
- Component 44: x2
- Component 45: x2
- Component 46: x2
- Component 47: x2
- Component 48: x2
- Component 49: x2
- Component 50: x2
- Component 51: x2
- Component 52: x2
- Component 53: x2
- Component 54: x2
- Component 55: x2
- Component 56: x2
- Component 57: x2
- Component 58: x2
- Component 59: x2
- Component 60: x2
- Component 61: x2
- Component 62: x2
- Component 63: x2
- Component 64: x2
- Component 65: x2
- Component 66: x2
- Component 67: x2
- Component 68: x2
- Component 69: x2
- Component 70: x2
- Component 71: x2
- Component 72: x2
- Component 73: x2
- Component 74: x2
- Component 75: x2
- Component 76: x2
- Component 77: x2
- Component 78: x2
- Component 79: x2
- Component 80: x2
- Component 81: x2
- Component 82: x2
- Component 83: x2
- Component 84: x2
- Component 85: x2
- Component 86: x2
- Component 87: x2
- Component 88: x2
- Component 89: x2
- Component 90: x2
- Component 91: x2
- Component 92: x2
- Component 93: x2
- Component 94: x2
- Component 95: x2
- Component 96: x2
- Component 97: x2
- Component 98: x2
- Component 99: x2
- Component 100: x2

1084 x4

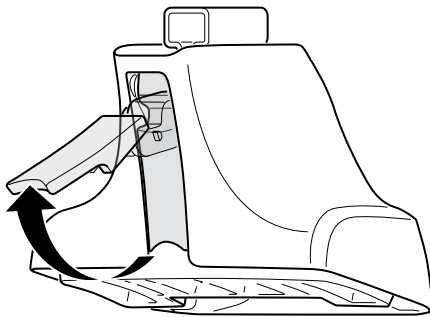
251 x1

196 x2

252 x1

x1

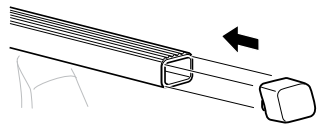
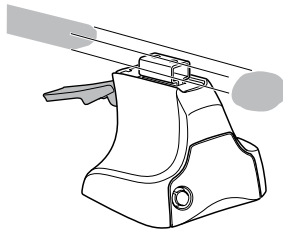
1



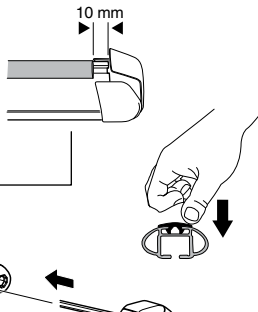
2



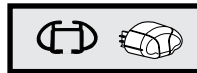
754 Rapid System
480R Rapid Traverse
(North America)



x4



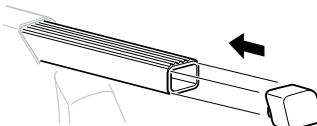
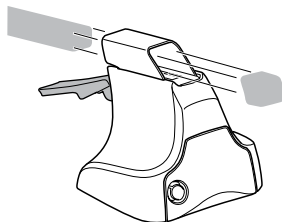
x4



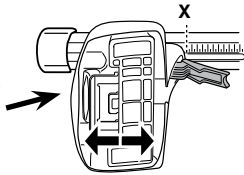
x4



480 Traverse
(North America)



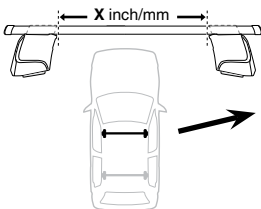
x4

3**754** Rapid System

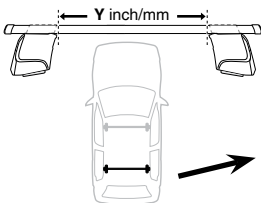
	X
RENAULT Fluence , 4-dr Sedan, 09–	37
RENAULT Megane III , 5-dr Estate, 09– (Without railing)	36,5
RENAULT Megane III , 5-dr Hatchback, 09–	36



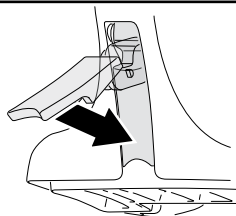
	Y
RENAULT Fluence , 4-dr Sedan, 09–	33
RENAULT Megane III , 5-dr Estate, 09– (Without railing)	32,5
RENAULT Megane III , 5-dr Hatchback, 09–	32,5

3**480R** Rapid Traverse**480** Traverse**(North America)**

	X inch	X mm
RENAULT Fluence , 4-dr Sedan, 09–	40 1/4"	1021 mm
RENAULT Megane III , 5-dr Estate, 09– (Without railing)	40"	1016 mm
RENAULT Megane III , 5-dr Hatchback, 09–	39 3/4"	1011 mm

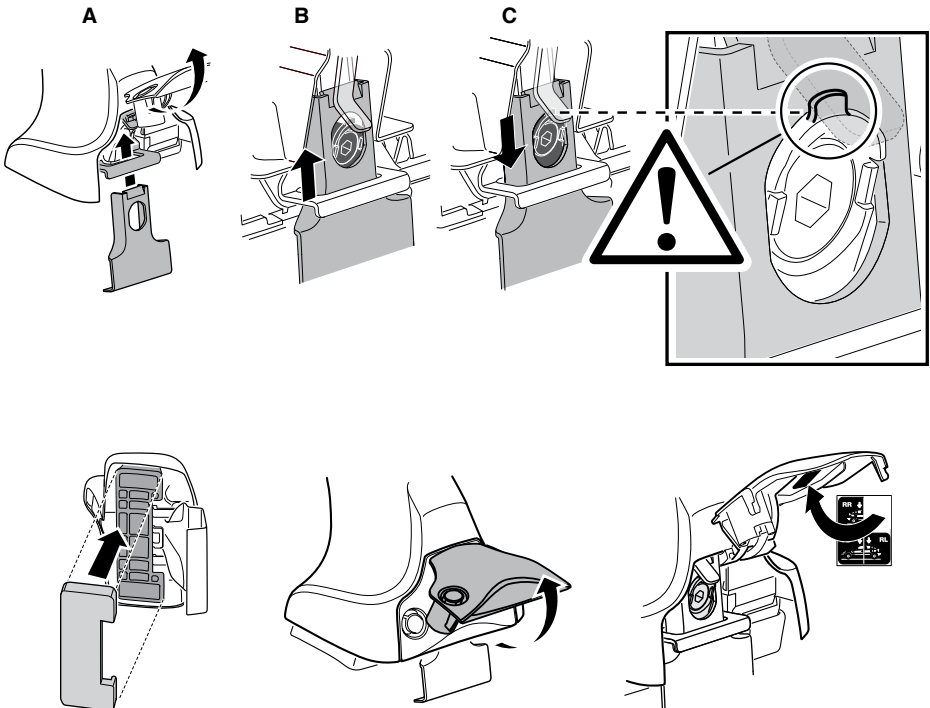
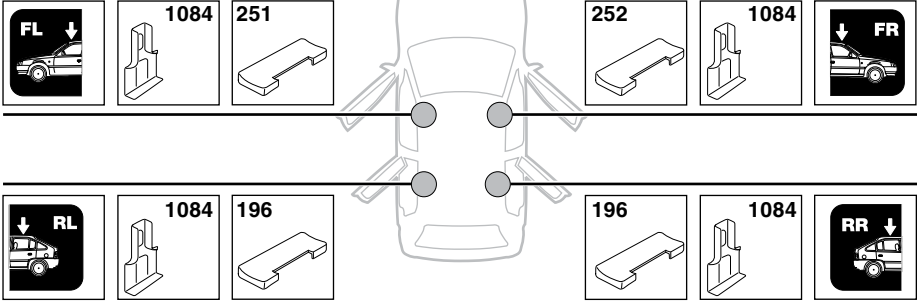


	Y inch	Y mm
RENAULT Fluence , 4-dr Sedan, 09–	38 5/8"	981 mm
RENAULT Megane III , 5-dr Estate, 09– (Without railing)	38 3/8"	976 mm
RENAULT Megane III , 5-dr Hatchback, 09–	38 3/8"	976 mm

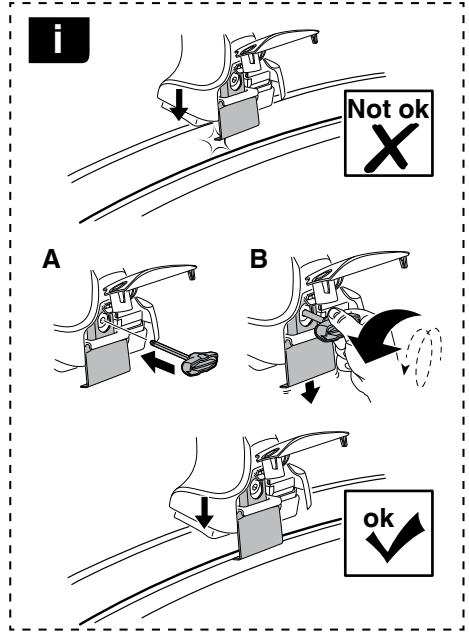
4

5

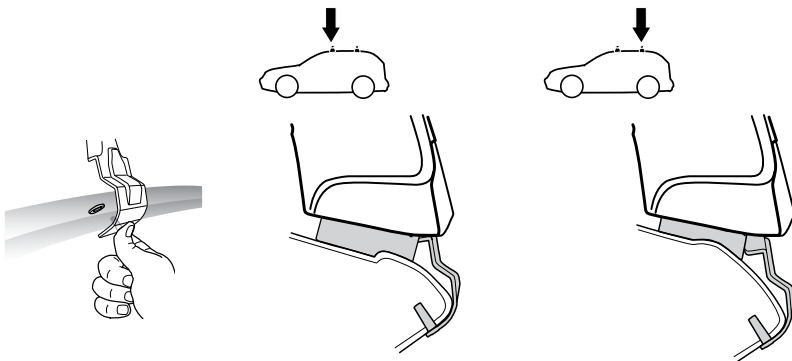
RENAULT Fluence, 4-dr Sedan, 09–
RENAULT Megane III, 5-dr Estate, 09– (Without raiing)
RENAULT Megane III, 5-dr Hatchback, 09–



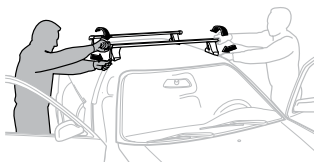
6



	X mm	Y mm	X inch	Y inch
RENAULT Fluence, 4-dr Sedan, 09-	110 mm	735 mm	4 ³ / ₈ "	28 ⁷ / ₈ "
RENAULT Megane III, 5-dr Estate, 09- (Without railing)	115 mm	730 mm	4 ¹ / ₂ "	28 ³ / ₄ "
RENAULT Megane III, 5-dr Hatchback, 09-	120 mm	760 mm	4 ³ / ₄ "	29 ⁷ / ₈ "



7



GB/US Tighten alternately
 D Die Schrauben abwechselnd anziehen
 F Serrer alternativement chaque côté
 NL Afwisselend aan de linker- en de rechterkant aandraaien
 I Alternare il serraggio delle viti
 E Apertar alternativamente
 PT Aperte alternadamente
 S Dra åt växelvis
 FIN Kierrä vuorotellen
 EST Pinguldage vaheldumisi
 LAT Pieļieciet pamišus
 LIT Užsukinėkite pakaitomis
 PL Śruby dokręcaj naprzemiennie
 RU Затягивайте попеременно

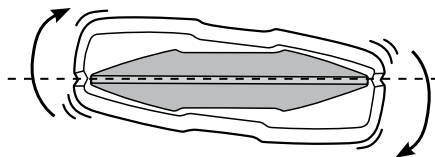
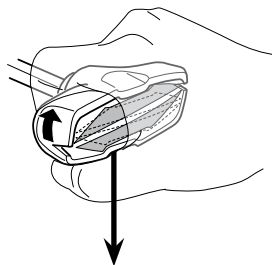
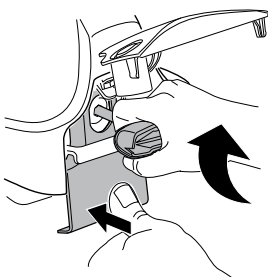
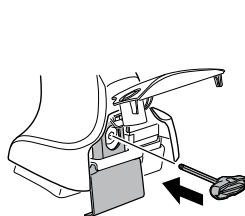
CZ Pokręťta bagażnika dokręcaj dokręcaj naprzemiennie.
 SK Dofahajte striedavo
 SLO Privijajte izmenično.
 HR Naizmjerno zategnite
 HU Egymástól függetlenül szorítandó
 GR Σφιγίγτες εναλλάξ
 TR Dönüşümlü sıkın

中文 交替拧紧

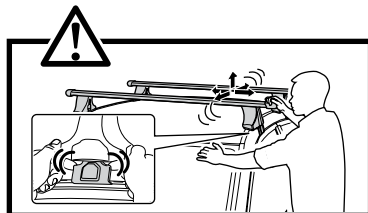
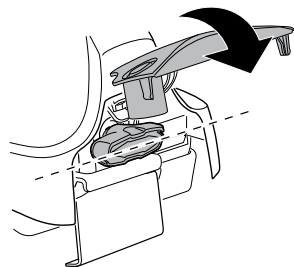
한국어 번갈아 가며 조이십시오.

日本語 交互に締め付けてください。

ไทย ชันในแบบสลับ



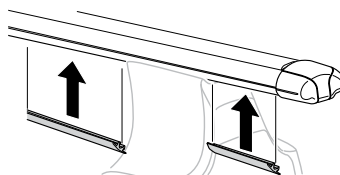
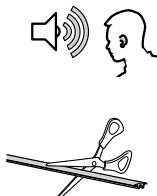
≈ 3 Nm

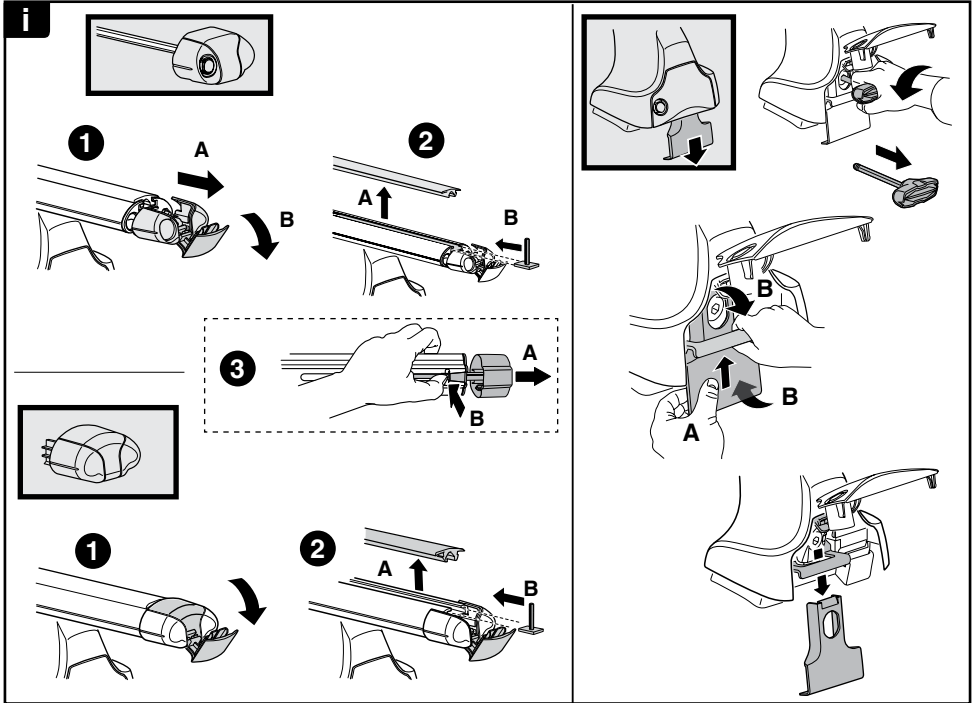


8

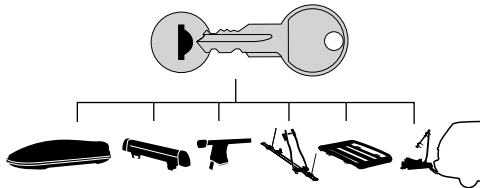


x1
17 mm





THULE
SWEDEN
**ONE
KEY
SYSTEM**



544 (x4)

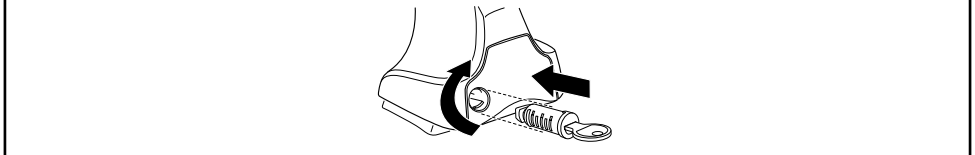
596 (x6)

588 (x8)

NA **510** (x10)

EUR **452** (x12)

ASIA



WW ▶ Thule Sweden AB, Box 69, 330 33 Hillerstorp, SWEDEN
NA ▶ Thule Inc., 42 Silvermine Road, Seymour, Connecticut 06483, USA

info@thule.com
customer.service@thule.com

www.thule.com

503-1593-03