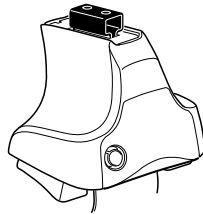


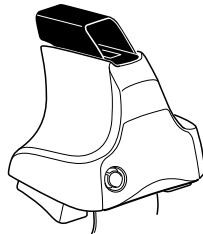
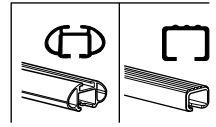
Kit 1590

VOLVO S40, 4-dr Sedan, 04- / *05-

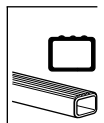
*North America



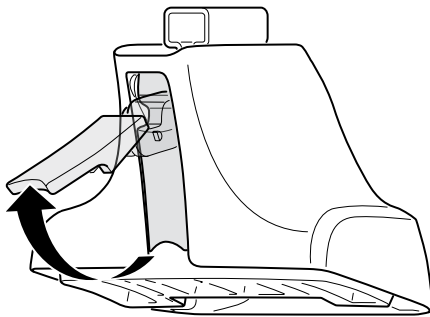
754 Rapid System
480R Rapid Traverse (North America)



480 Traverse (North America)



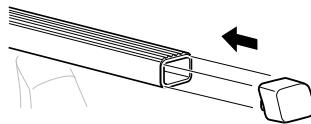
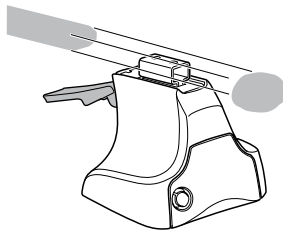
1



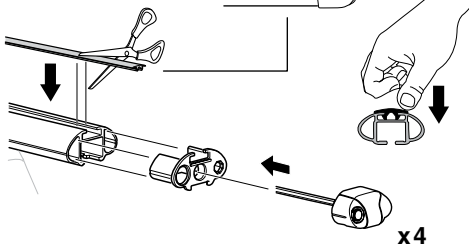
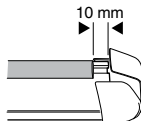
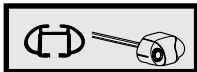
2



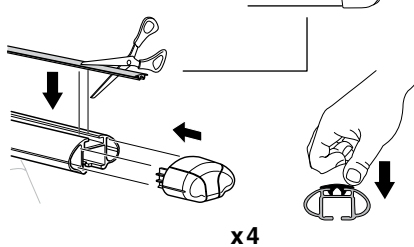
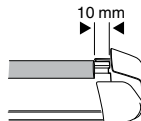
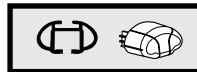
754 Rapid System
480R Rapid Traverse
(North America)



x4



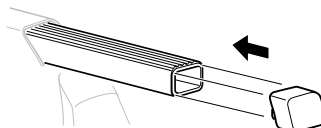
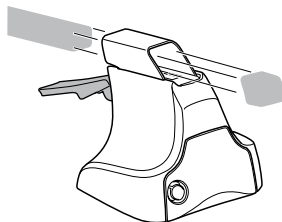
x4



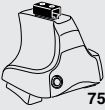
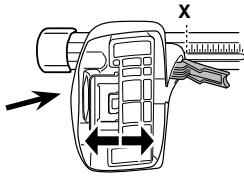
x4



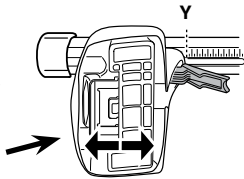
480 Traverse
(North America)



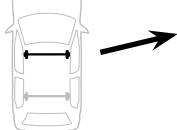
x4

3**754** Rapid System

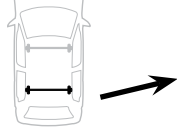
	X
VOLVO S40, 4-dr Sedan, 04- / *05-	41,5



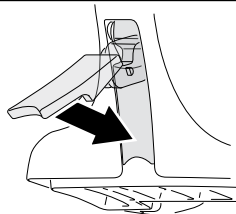
	Y
VOLVO S40, 4-dr Sedan, 04- / *05-	39,5

3**480R** Rapid Traverse**480** Traverse**(North America)**

	X inch	X mm
VOLVO S40, 4-dr Sedan, 04- / *05-	42"	1066 mm

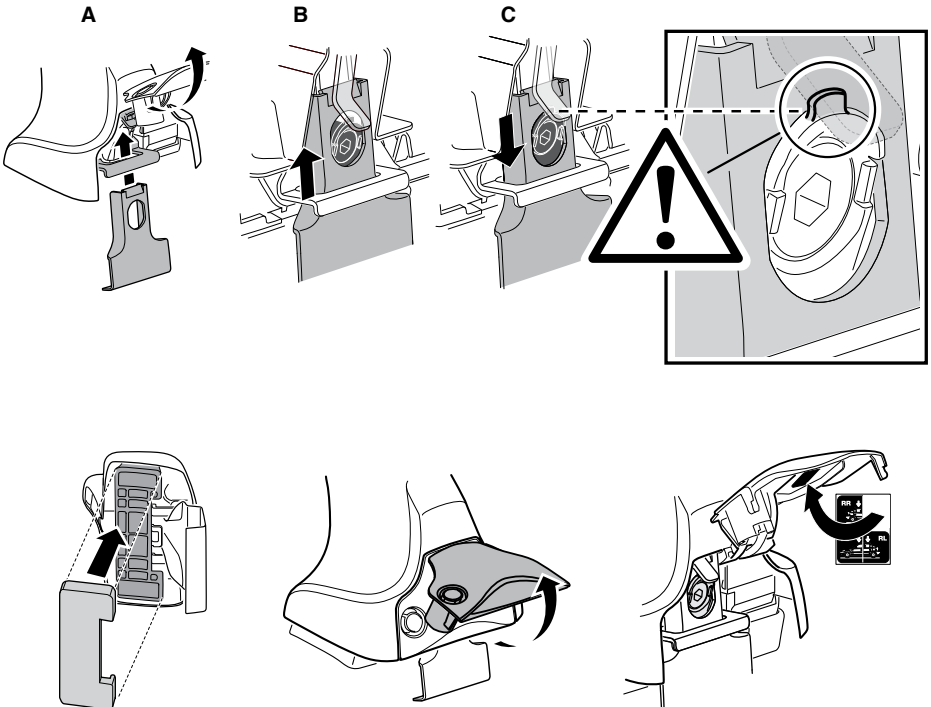
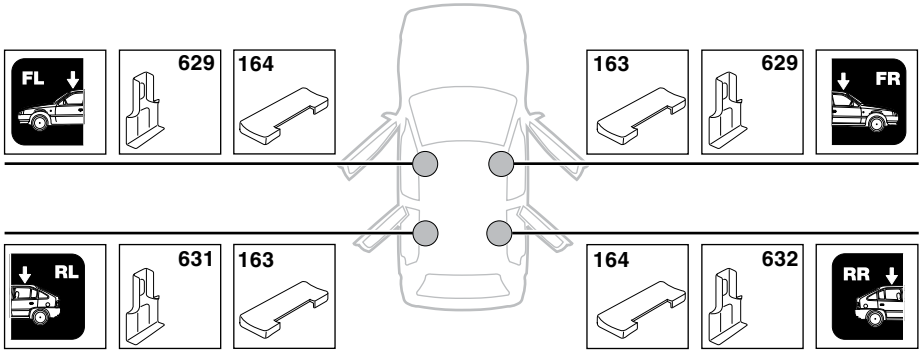


	Y inch	Y mm
VOLVO S40, 4-dr Sedan, 04- / *05-	41 1/8"	1046 mm

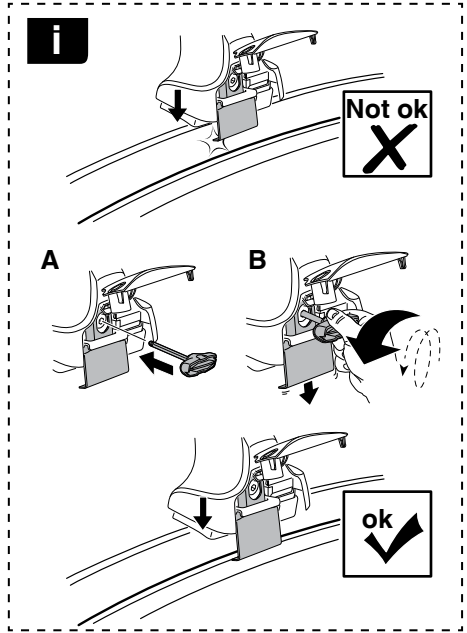
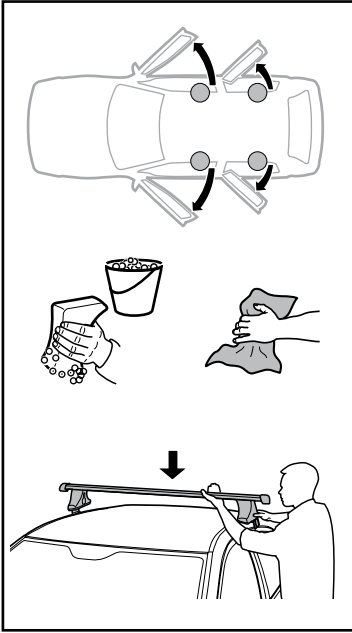
4

5

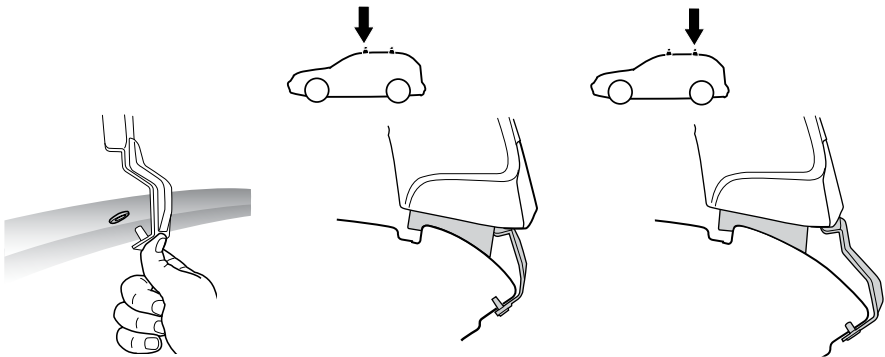
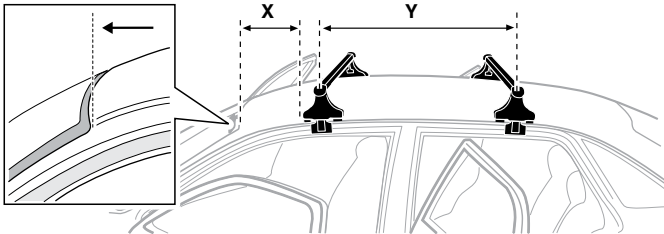
VOLVO S40, 4-dr Sedan, 04- / *05-



6



	X mm	Y mm	X inch	Y inch
VOLVO S40, 4-dr Sedan, 04- / *05-	225 mm	830 mm	8 ⁷ / ₈ "	32 ⁵ / ₈ "



7

GB/US Tighten alternately
D Die Schrauben abwechselnd anziehen
F Serrer alternativement chaque côté
NL Afwisselend aan de linker- en de rechterkant aandraaien
I Alternare il serraggio delle viti
E Apertar alternativamente
PT Aperte alternadamente
S Dra åt växelvis
FIN Kierrä vuorotellen
EST Pinguldage vaheldumisi
LAT Pieļieciet pamišus
LIT Užsukinėkite pakaitomis
PL Śruby dokręcaj naprzemiennie
RU Затягивайте попеременно

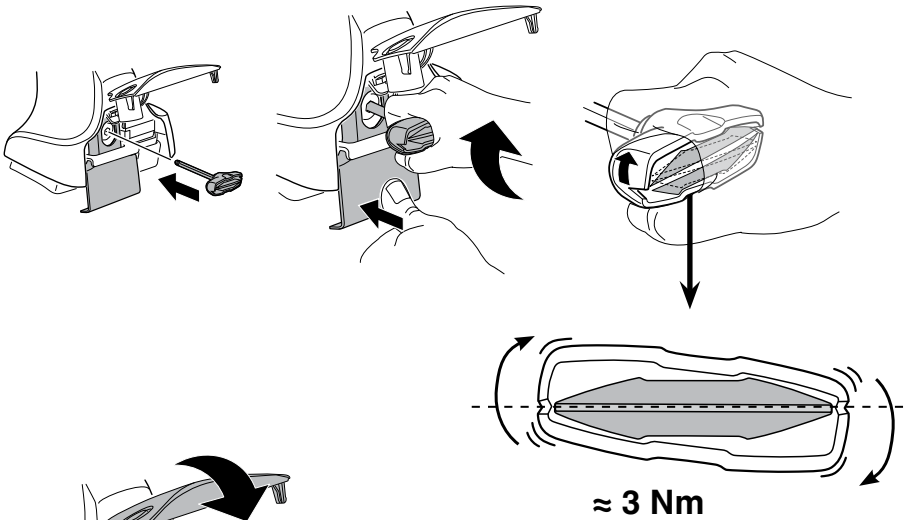
CZ Pokręťta bagażnika dokręcaj naprzemiennie.
SK Dofahajte striedavo
SLO Privijajte izmenično.
HR Naizmjenično zategnite
HU Egymástól függetlenül szorítandó
GR Σφιγίγτες εναλλάξ
TR Dönüşümlü sıkın

中文 交替拧紧

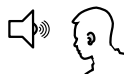
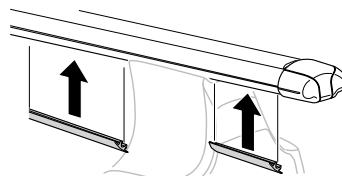
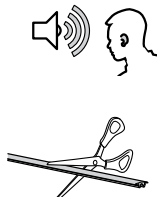
한국어 번갈아 가며 조이십시오.

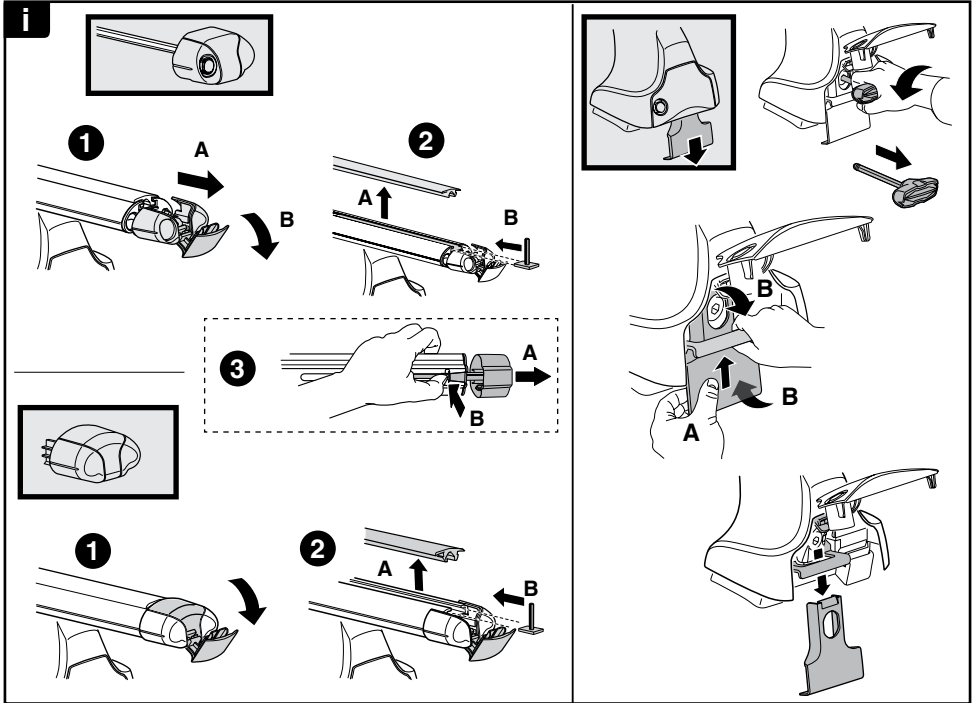
日本語 交互に締め付けてください。

ไทย ชันในแบบสลับ

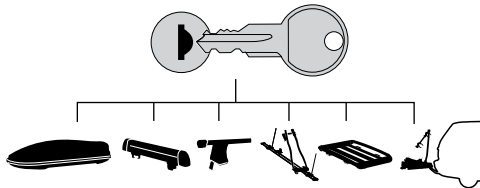
**8**

x1
17 mm





THULE
SWEDEN
**ONE
KEY
SYSTEM**



- 544** (x4)
- 596** (x6)
- 588** (x8)
- NA **510** (x10)
- EUR **452** (x12)
- ASIA

