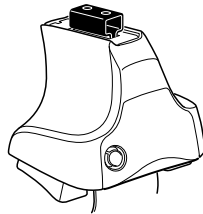
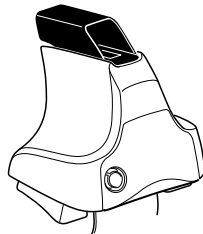
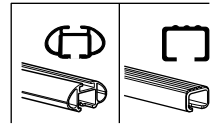


# Kit 1492

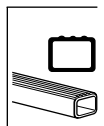
**ACURA TSX**, 4-dr Sedan, \*09–  
**HONDA Accord**, 4-dr Sedan, 08–  
\*North America



**754** Rapid System  
**480R** Rapid Traverse (North America)



**480** Traverse (North America)



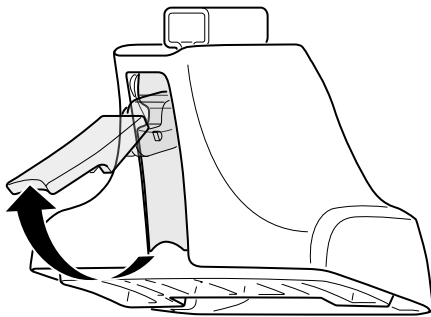
754 Rapid System

480R Rapid Traverse (North America)

480 Traverse (North America)

(North America)

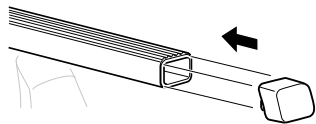
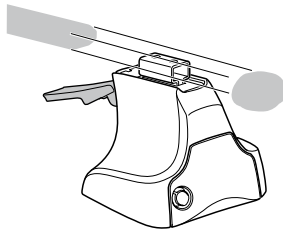
1



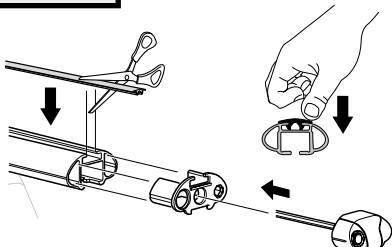
2



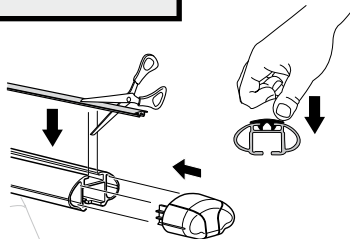
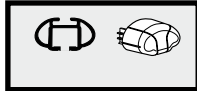
754 Rapid System  
480R Rapid Traverse  
(North America)



x4



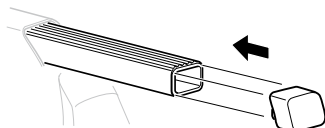
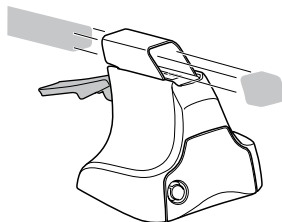
x4



x4

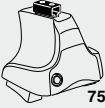


480 Traverse  
(North America)

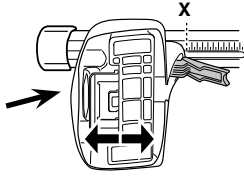


x4

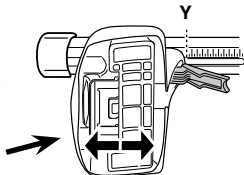
**3**



**754** Rapid System



	X
<b>ACURA TSX, 4-dr Sedan, *09-</b>	<b>43</b>
<b>HONDA Accord, 4-dr Sedan, 08-</b>	<b>42,5</b>



	Y
<b>ACURA TSX, 4-dr Sedan, *09-</b>	<b>37.5</b>
<b>HONDA Accord, 4-dr Sedan, 08-</b>	<b>37</b>

**3**

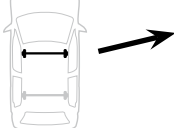


**480R** Rapid Traverse

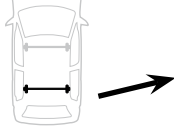


**480** Traverse

**(North America)**

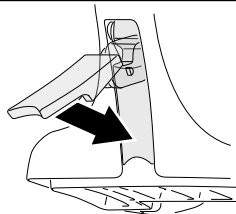


	X inch	X mm
<b>ACURA TSX, 4-dr Sedan, *09-</b>	<b>42 1/2"</b>	<b>1081 mm</b>
<b>HONDA Accord, 4-dr Sedan, 08-</b>	<b>42 3/8"</b>	<b>1076 mm</b>



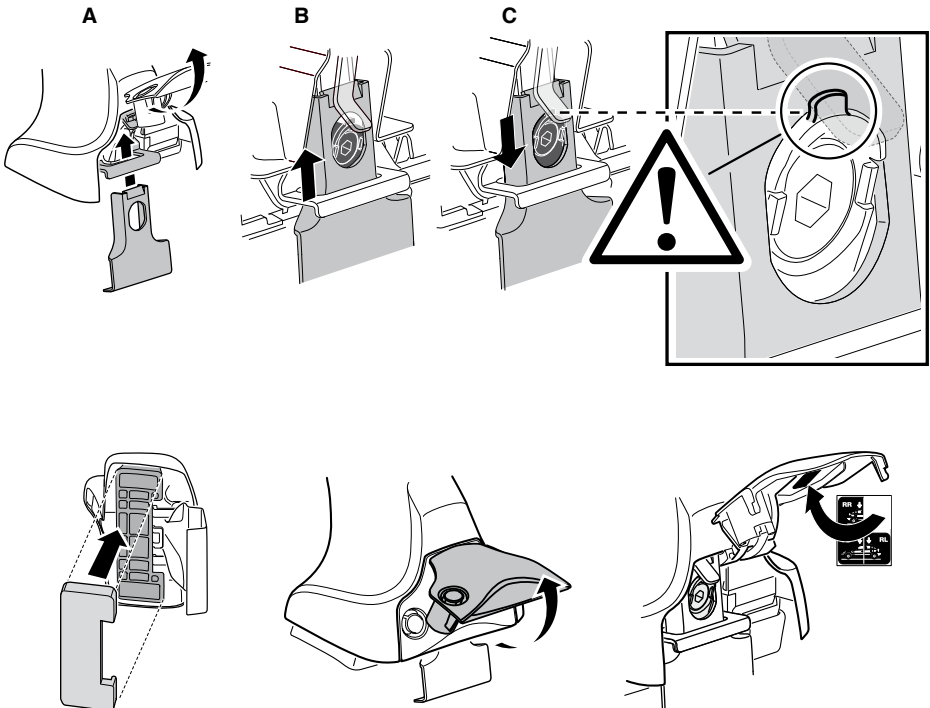
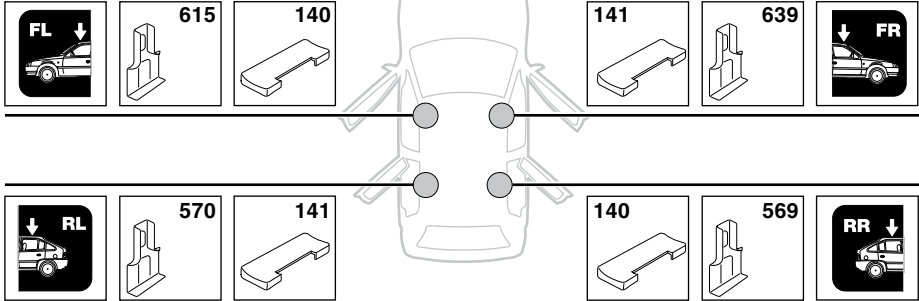
	Y inch	Y mm
<b>ACURA TSX, 4-dr Sedan, *09-</b>	<b>40 1/4"</b>	<b>1022 mm</b>
<b>HONDA Accord, 4-dr Sedan, 08-</b>	<b>40 1/4"</b>	<b>1021 mm</b>

**4**

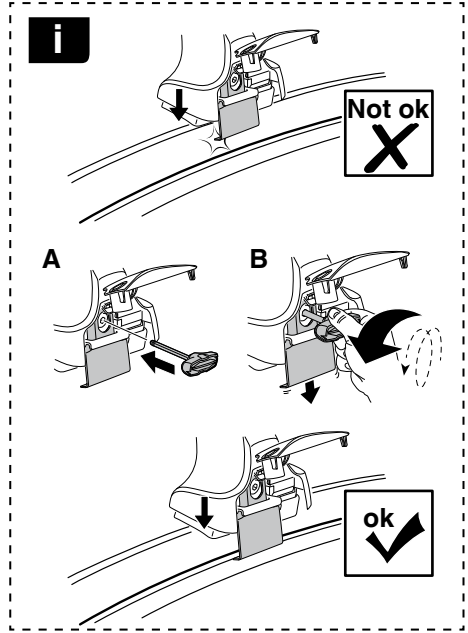
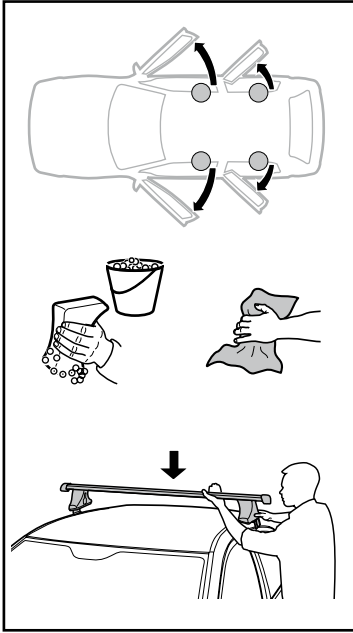


# 5

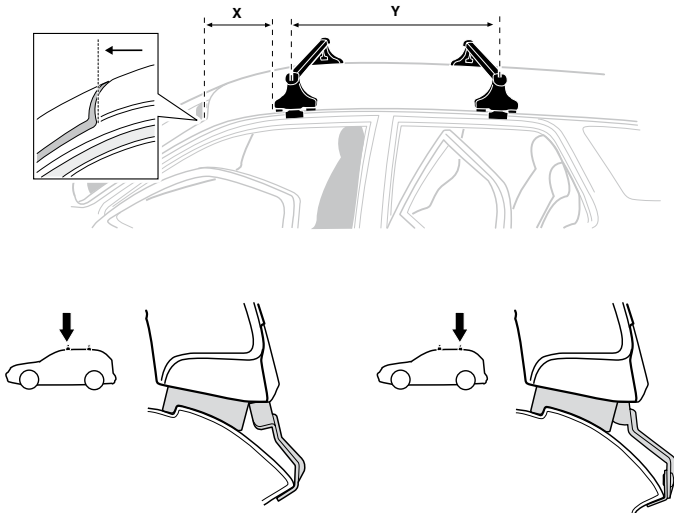
ACURA TSX, 4-dr Sedan, \*09-  
HONDA Accord, 4-dr Sedan, 08-



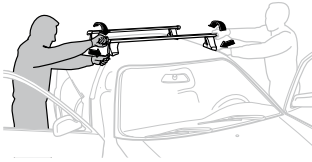
6



	X mm	Y mm	X inch	Y inch
ACURA TSX, 4-dr Sedan, *09-	254 mm	648 mm	10"	25 1/2"
HONDA Accord, 4-dr Sedan, 08-	250 mm	650 mm	9 7/8"	25 5/8"



7



**GB/US** Tighten alternately  
**D** Die Schrauben abwechselnd anziehen  
**F** Serrer alternativement chaque côté  
**NL** Afwisselend aan de linker- en de rechterkant aandraaien  
**I** Alternare il serraggio delle viti  
**E** Apertar alternativamente  
**PT** Aperte alternadamente  
**S** Dra åt växelvis  
**FIN** Kierrä vuorotellen  
**EST** Pinguldage vaheldumisi  
**LAT** Pievelciēt pamišus  
**LIT** Užsukinėkite pakaitomis  
**PL** Śruby dokręcaj naprzemiennie  
**RU** Затягивайте попеременно

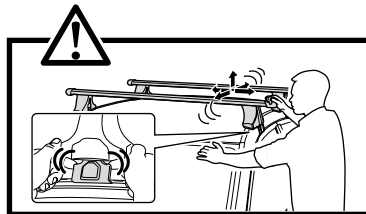
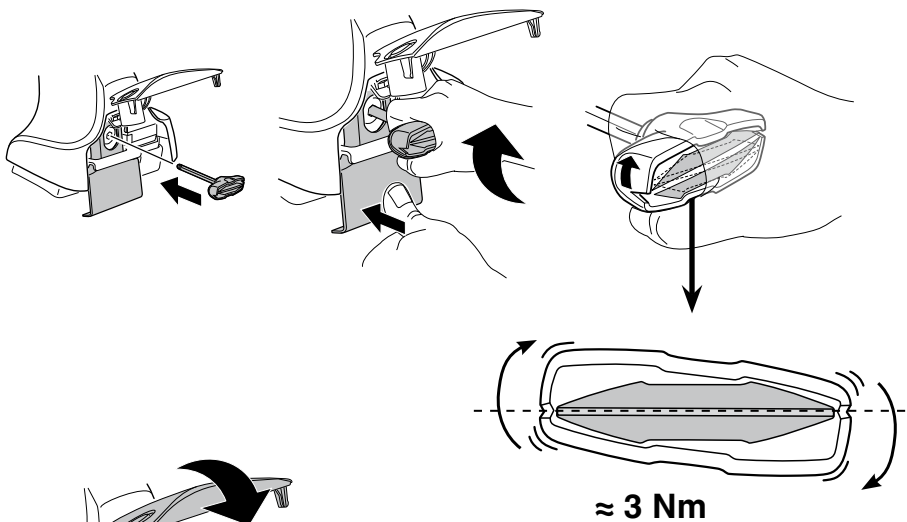
**CZ** Pokręťta bagazníka dokręcaj dokręcaj naprzemiennie.  
**SK** Doťahujte striedavo  
**SLO** Privijajte izmenično.  
**HR** Naizmjenično zategnite  
**HU** Egymástól függetlenül szorítandó  
**GR** Σφιγγετέ εναλλάξ  
**TR** Dönüşümlü sıkın

**中文** 交替拧紧

**한국어** 번갈아 가며 조이십시오.

**日本語** 交互に締め付けてください。

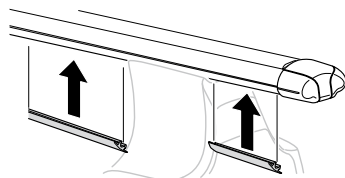
**ไทย** ชั้้นในแบบสลับ

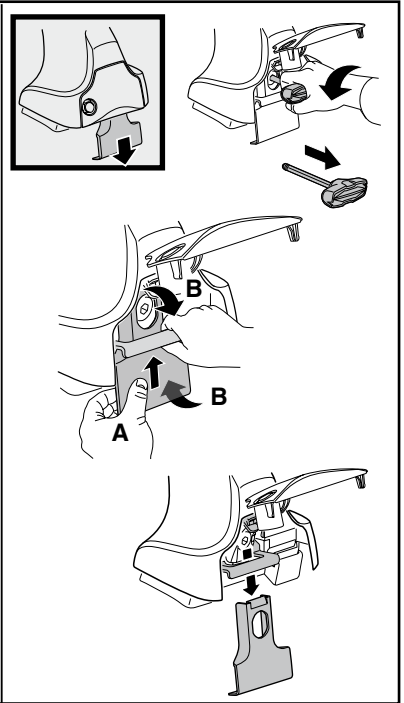
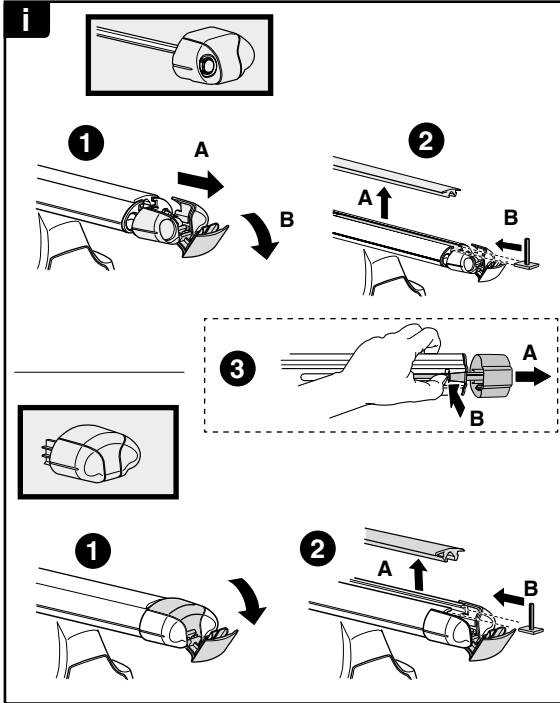


8

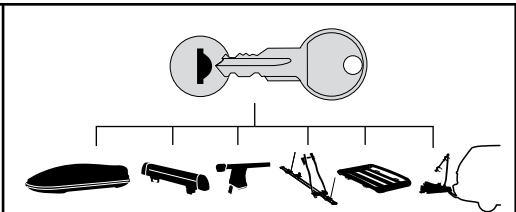


x1  
17 mm





**THULE**  
SWEDEN  
**ONE  
KEY  
SYSTEM**



- 544 (x4)
  - 596 (x6)
  - 588 (x8)
  - 510 (x10)
  - 452 (x12)
- NA  
EUR  
ASIA



WW ▶ Thule Sweden AB, Box 69, 330 33 Hillerstorp, SWEDEN  
NA ▶ Thule Inc., 42 Silvermine Road, Seymour, Connecticut 06483, USA

info@thule.com  
customer.service@thule.com

www.thule.com