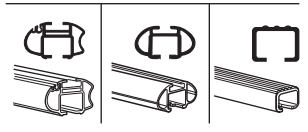
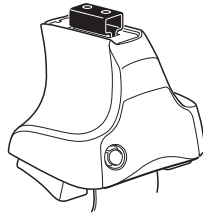


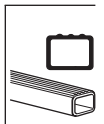
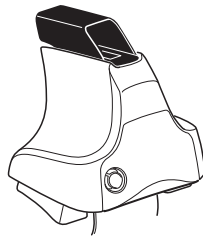
# Kit 1482

TOYOTA Corolla Rumion, 5-dr Hatchback, 07-

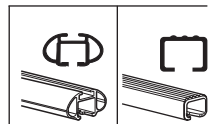
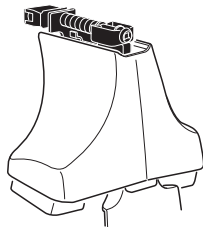
480R  
754



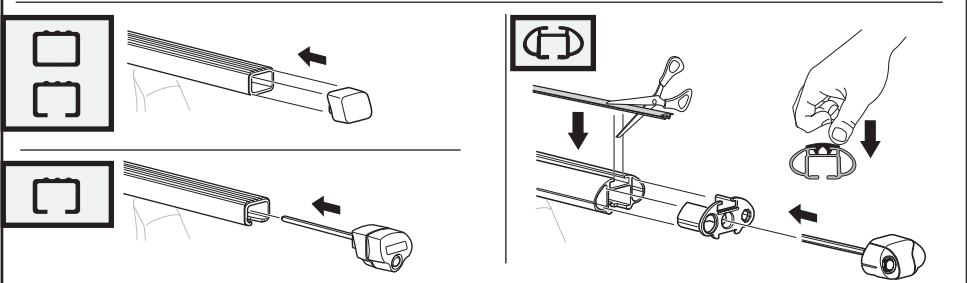
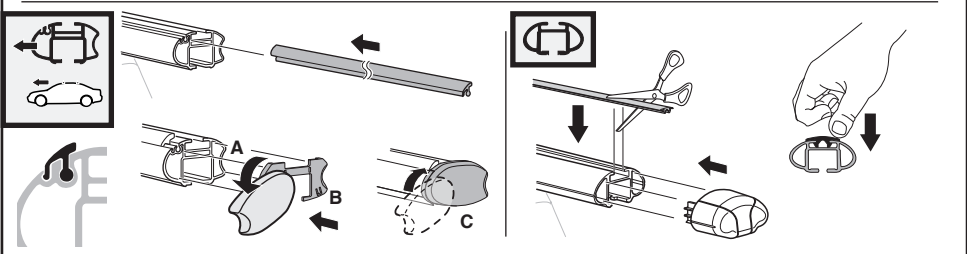
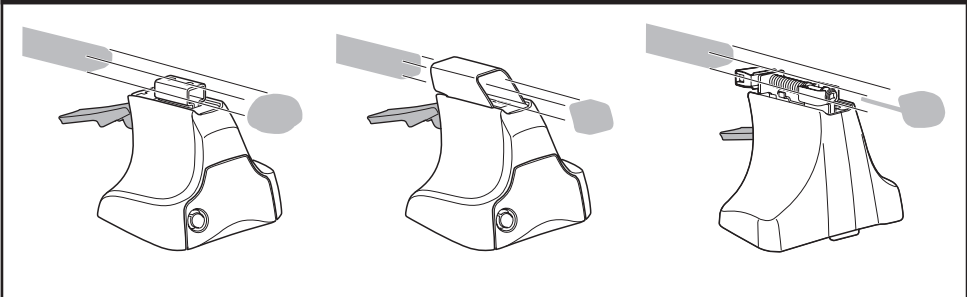
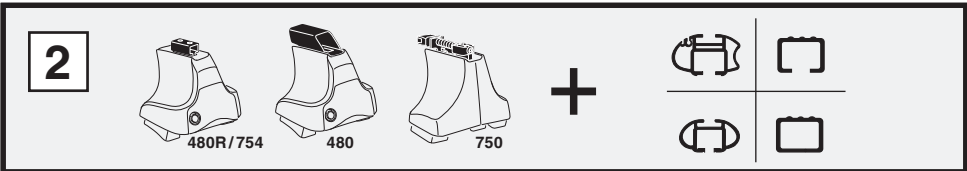
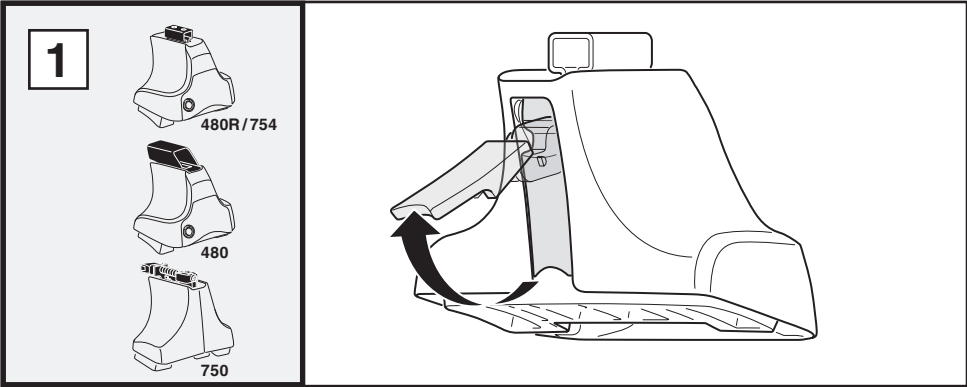
480

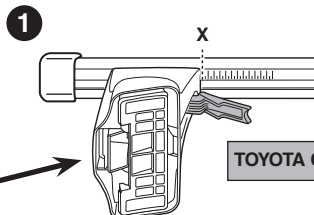
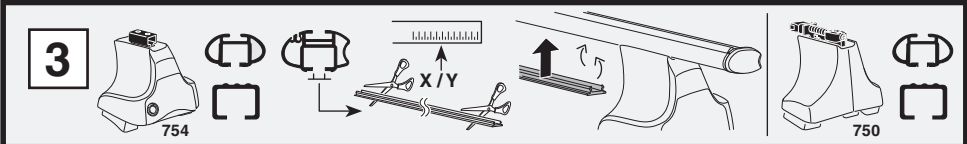


750

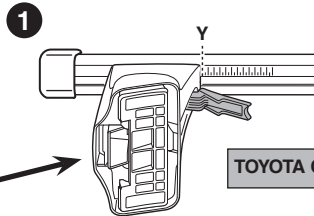




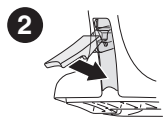
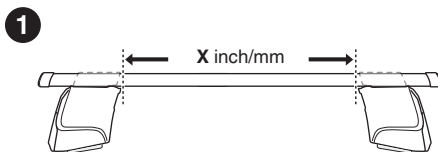
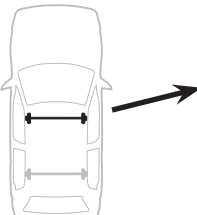
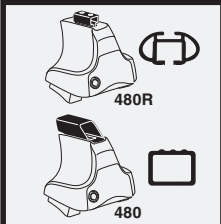




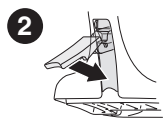
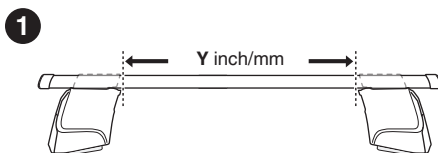
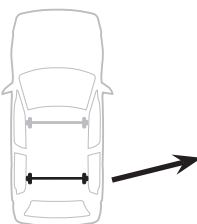
	<b>X</b>
<b>TOYOTA Corolla Rumion, 5-dr Hatchback, 07-</b>	<b>50</b>



	<b>Y</b>
<b>TOYOTA Corolla Rumion, 5-dr Hatchback, 07-</b>	<b>46,5</b>



	<b>X inch</b>	<b>X mm</b>
<b>TOYOTA Corolla Rumion, 5-dr Hatchback, 07-</b>	<b>45 3/8"</b>	<b>1151 mm</b>



	<b>Y inch</b>	<b>Y mm</b>
<b>TOYOTA Corolla Rumion, 5-dr Hatchback, 07-</b>	<b>43 7/8"</b>	<b>1116 mm</b>

4

TOYOTA Corolla Rumion, 5-dr Hatchback, 07-

146



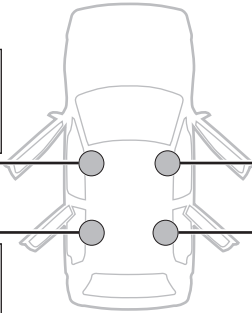
965



146



965



146



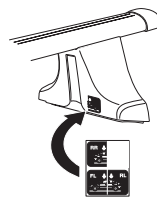
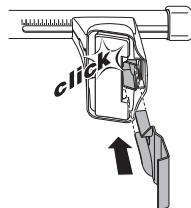
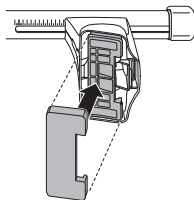
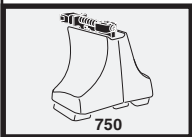
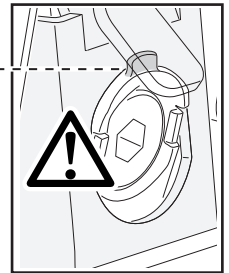
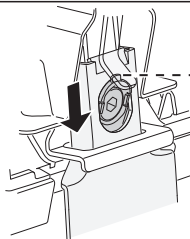
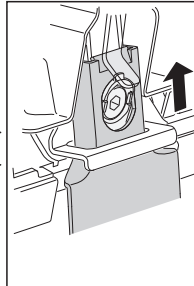
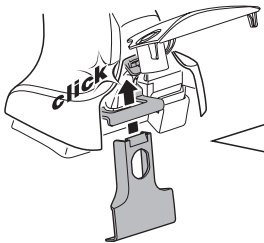
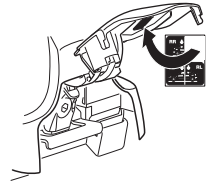
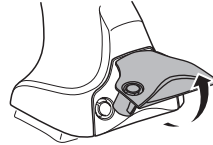
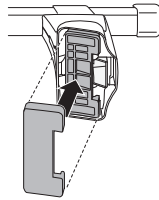
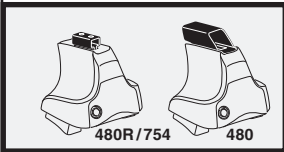
964



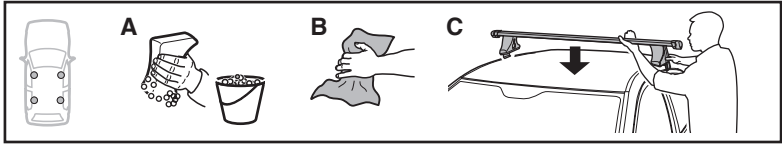
146



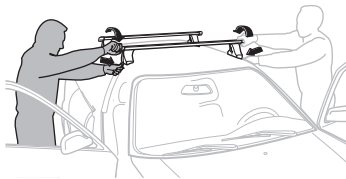
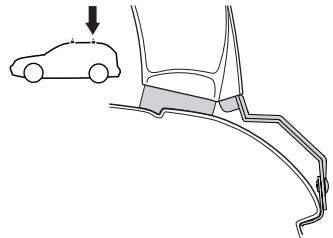
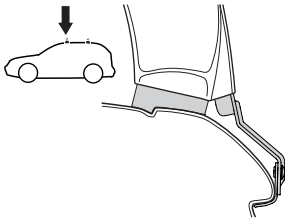
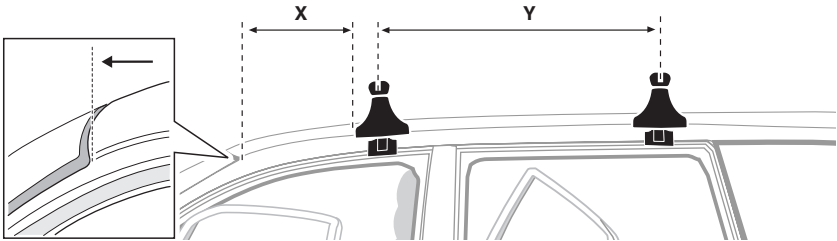
964



5



	X mm	Y mm	X inch	Y inch
TOYOTA Corolla Rumion, 5-dr Hatchback, 07-	530 mm	700 mm	20 <sup>7</sup> / <sub>8</sub> "	27 <sup>1</sup> / <sub>2</sub> "



**GB/US** Tighten alternately

**D** Die Schrauben abwechselnd anziehen

**F** Serrer alternativement chaque côté

**NL** Afwisselend aan de linker- en de rechterkant aandraaien

**I** Alternare il serraggio delle viti

**E** Serrare alternativamente

**PT** Aperte alternadamente

**S** Dra åt växelvis

**FIN** Kierrä vuorotellen

**EST** Pinguldage vaheldumisi

**LAT** Pielieciet pamišus

**LIT** Užsukinėkite pakaitomis

**PL** Śruby dokręcaj naprzemiennie

**RU** Затягивайте попеременно

**CZ** Pokręťta bagażníka dokręcaj dokręcaj naprzemiennie.

**SK** Doťahujte striedavo

**SLO** Privijajte izmenično.

**HR** Naizmjenično zategnite

**HU** Egymástól függetlenül szorítandó

**GR** Σφιγγετε εναλλάξ

**TR** Dönüşümlü sıkın

**中文** 交替拧紧

**한국어** 번갈아 가며 조이십시오.

**日本語** 交互に締め付けてください。

**ไทย** ชันโนแบบสลับ

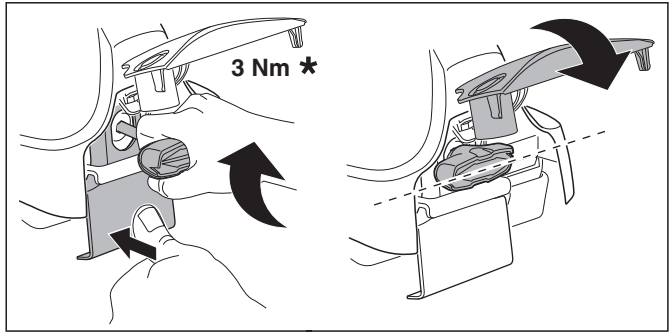
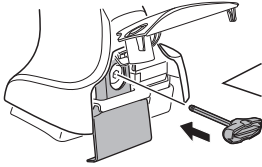
6



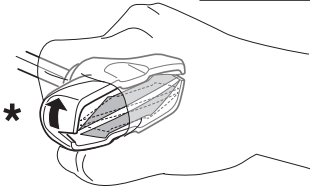
480R/754



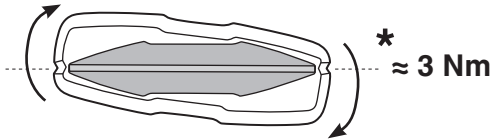
480



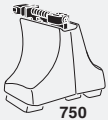
3 Nm \*



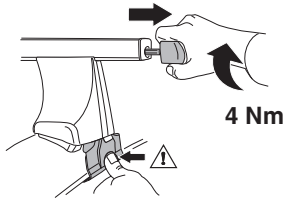
\*



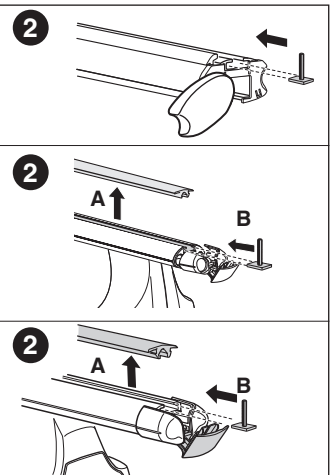
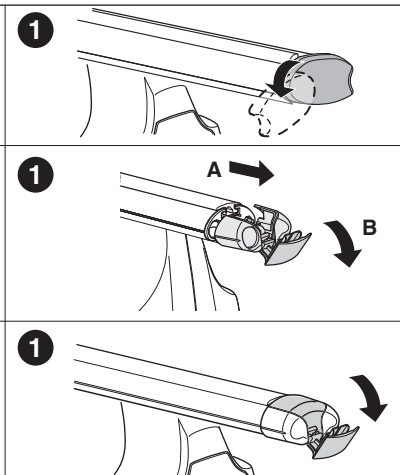
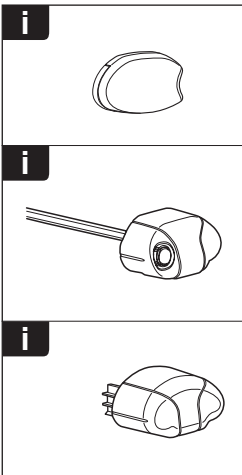
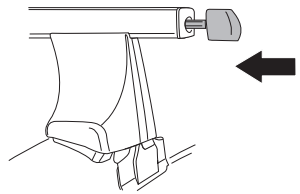
\* ≈ 3 Nm

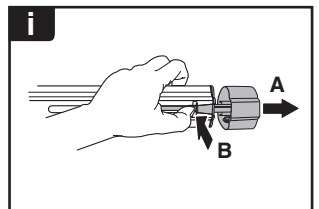
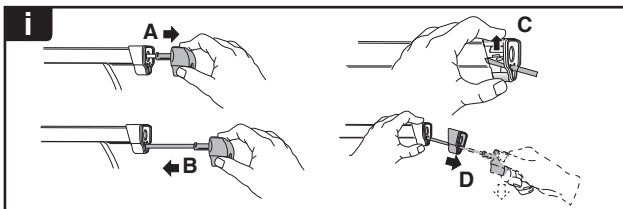
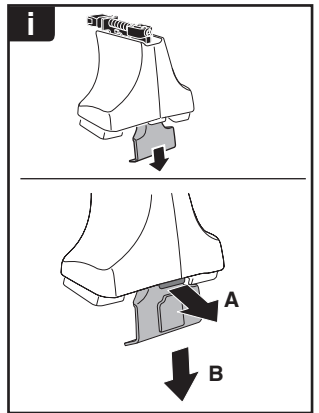
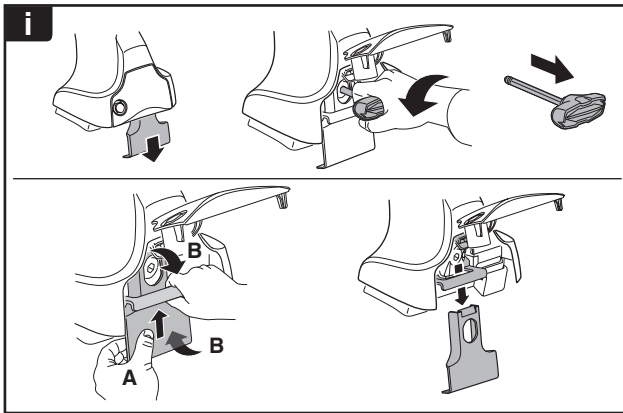
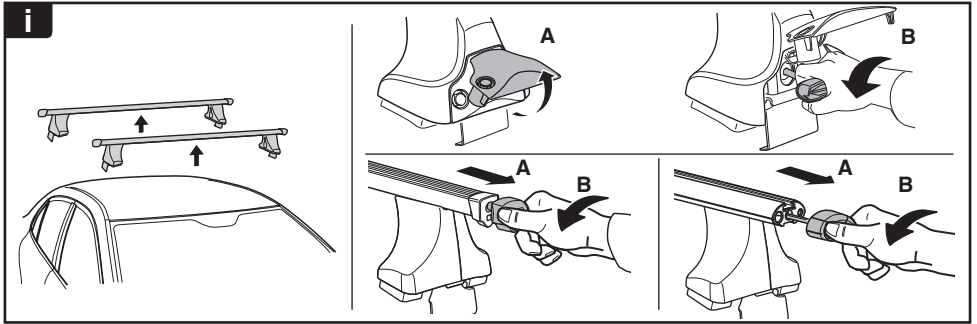


750

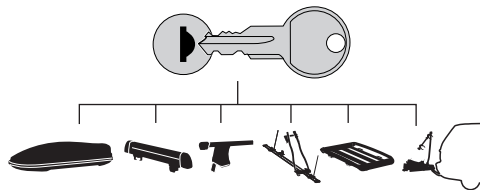


4 Nm

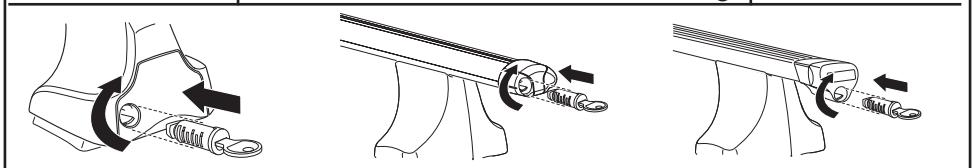




**THULE**  
SWEDEN  
**ONE  
KEY  
SYSTEM**



		(x4)
		(x6)
		(x8)
NA		(x10)
EUR		(x12)
ASIA		(x12)



WW ▶ Thule Sweden AB, Box 69, 330 33 Hillerstorp, SWEDEN  
NA ▶ Thule Inc., 42 Silvermine Road, Seymour, Connecticut 06483, USA

info@thule.com  
customer.service@thule.com

www.thule.com