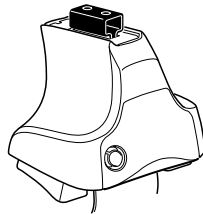
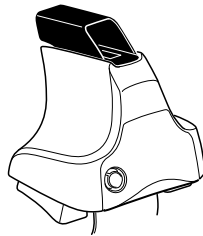
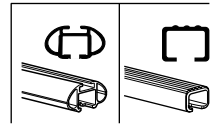


Kit 1445

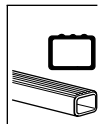
FORD Mondeo (Mk.IV.), 4-dr Sedan, 07–
FORD Mondeo (Mk.IV.), 5-dr Hatchback, 07–



754 Rapid System
480R Rapid Traverse (North America)



480 Traverse (North America)



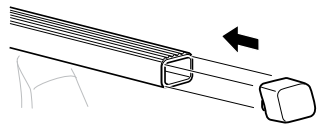
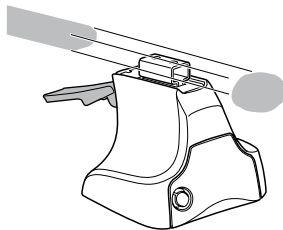
1



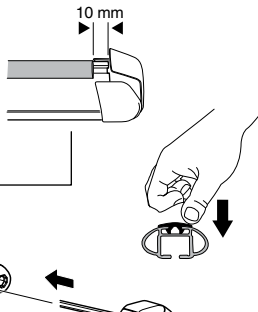
2



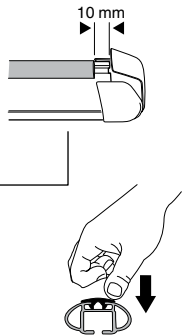
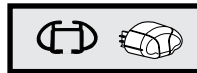
754 Rapid System
480R Rapid Traverse
(North America)



x4



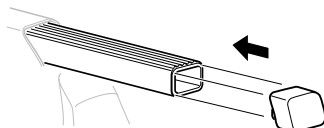
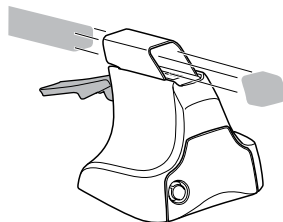
x4



x4

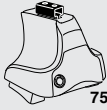


480 Traverse
(North America)

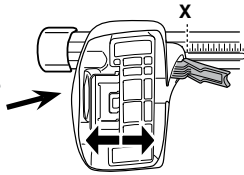
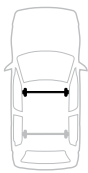


x4

3

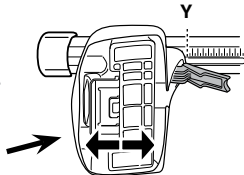


754 Rapid System



X

FORD Mondeo (Mk.IV), 4-dr Sedan, 07-	41
FORD Mondeo (Mk.IV), 5-dr Hatchback, 07-	41



Y

FORD Mondeo (Mk.IV), 4-dr Sedan, 07-	37
FORD Mondeo (Mk.IV), 5-dr Hatchback, 07-	37

3



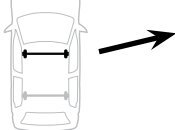
480R Rapid Traverse



480 Traverse

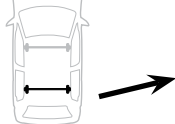


(North America)



X inch **X mm**

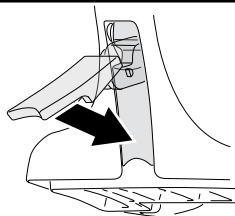
FORD Mondeo (Mk.IV), 4-dr Sedan, 07-	41 3/4"	1061 mm
FORD Mondeo (Mk.IV), 5-dr Hatchback, 07-	41 3/4"	1061 mm



Y inch **Y mm**

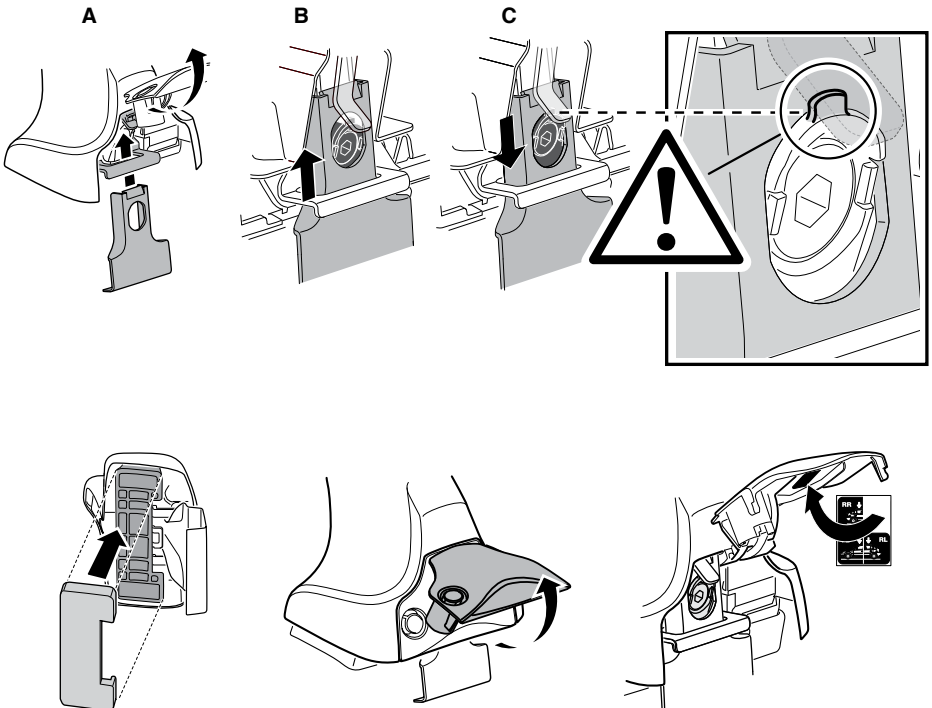
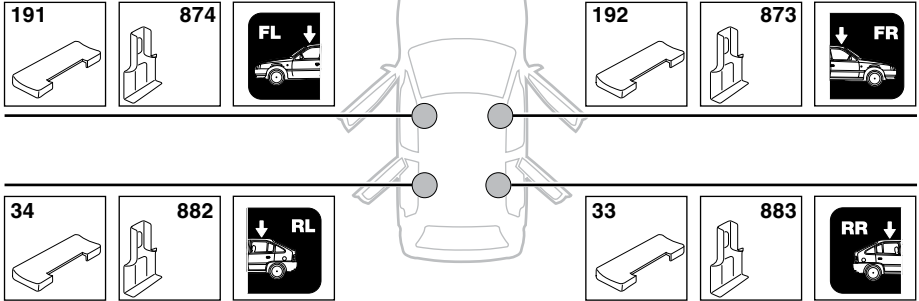
FORD Mondeo (Mk.IV), 4-dr Sedan, 07-	40 1/4"	1021 mm
FORD Mondeo (Mk.IV), 5-dr Hatchback, 07-	40 1/4"	1021 mm

4

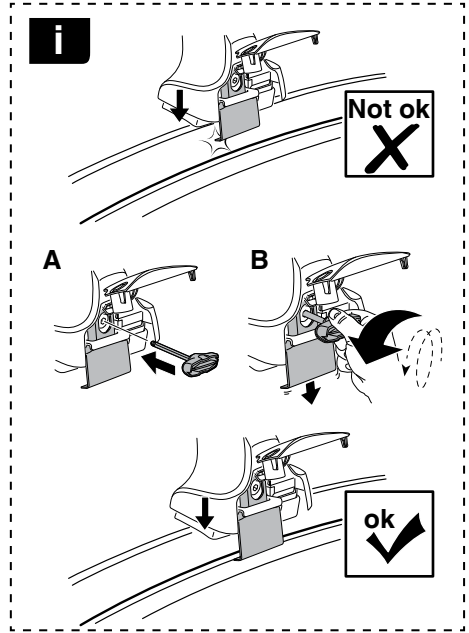


5

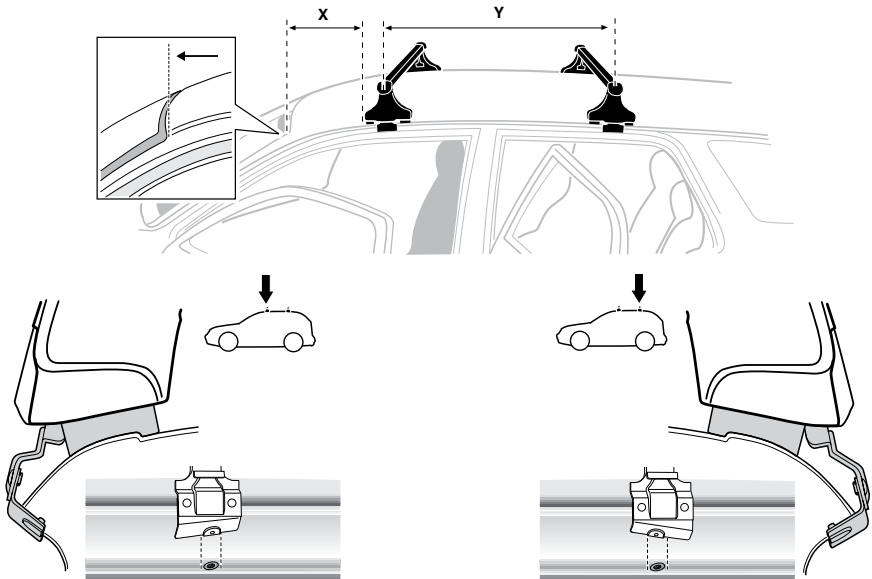
FORD Mondeo (Mk.IV.), 4-dr Sedan, 07–
 FORD Mondeo (Mk.IV.), 5-dr Hatchback, 07–



6



	X mm	Y mm	X inch	Y inch
FORD Mondeo (Mk.IV.), 4-dr Sedan, 07-	270 mm	820 mm	10 ⁵ / ₈ "	32 ¹ / ₄ "
FORD Mondeo (Mk.IV.), 5-dr Hatchback, 07-	270 mm	820 mm	10 ⁵ / ₈ "	32 ¹ / ₄ "



7



GB/US	Tighten alternately
D	Die Schrauben abwechselnd anziehen
F	Serrer alternativement chaque côté
NL	Afwisselend aan de linker- en de rechterkant aandraaien
I	Alternare il serraggio delle viti
E	Apretar alternativamente
PT	Aperte alternadamente
S	Dra åt växelvis
FIN	Kierrä vuorotellen
EST	Pinguldage vaheldumisi
LAT	Pielveiciet pamišus
LIT	Užsukinėkite pakaitomis
PL	Śruby dokręcaj naprzemiennie
RU	Загряивайте попеременно

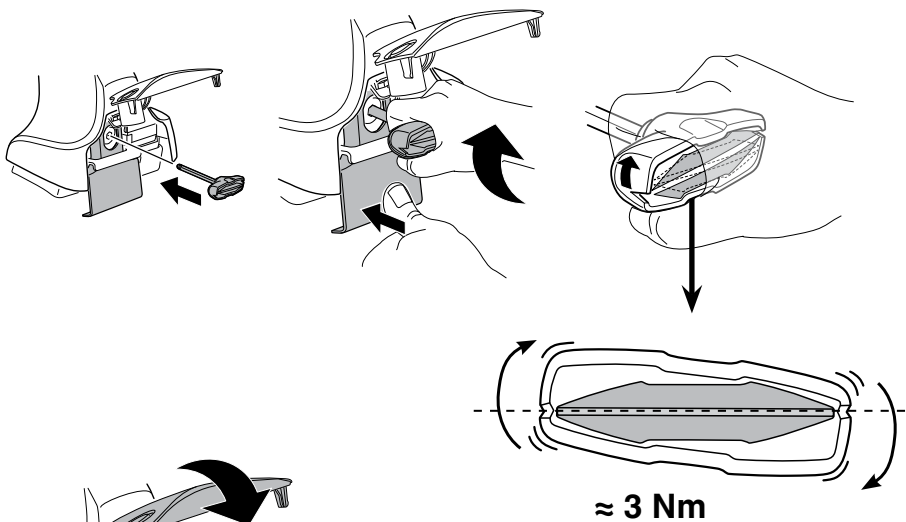
CZ	Pokręřta bagažníka dokręřcaj dokręřcaj naprzemiennie.
SK	Dofahajte striedavo
SLO	Privijajte izmenično.
HR	Naizmjenično zategnite
HU	Egymástól függetlenül szorítandó
GR	Σφιγίγες ενολάξ
TR	Dönüşümlü sıkın

中文 交替拧紧

한국어 번갈아 가며 조이십시오.

日本語 交互に締め付けてください。

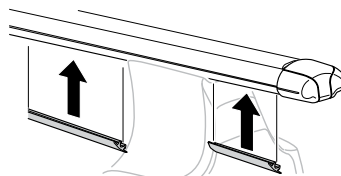
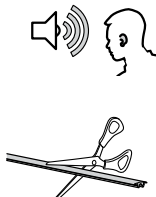
ไทย ชันในแบบสลับ



8

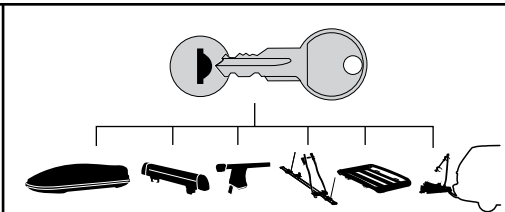


x1
17 mm





THULE
SWEDEN
**ONE
KEY
SYSTEM**



		(x4)
		(x6)
		(x8)
NA		(x10)
EUR		(x12)
ASIA		



WW ▶ Thule Sweden AB, Box 69, 330 33 Hillerstorp, SWEDEN
NA ▶ Thule Inc., 42 Silvermine Road, Seymour, Connecticut 06483, USA

info@thule.com
customer.service@thule.com

www.thule.com