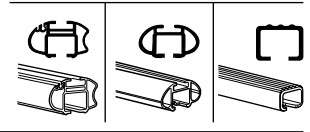
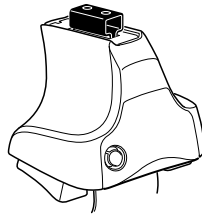


Kit 1441

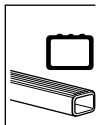
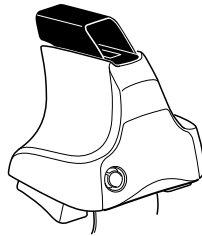
VOLVO C30, 3-dr Coupé, 07- / *08-

*North America

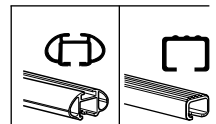
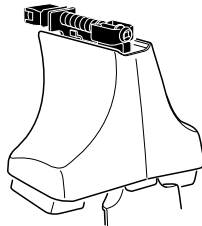
480R
754



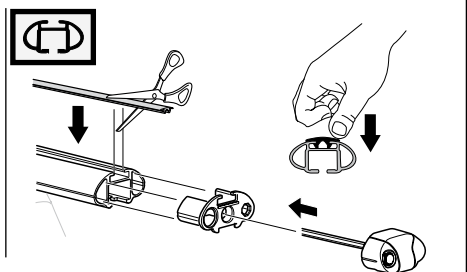
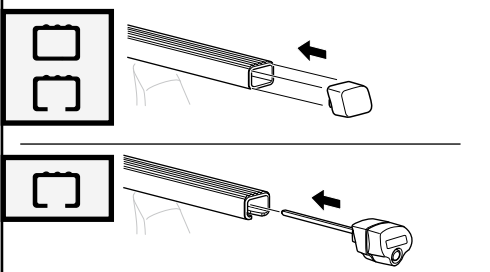
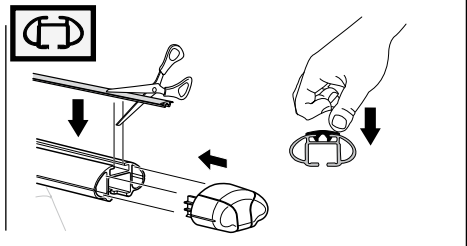
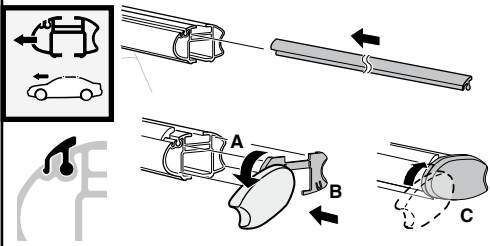
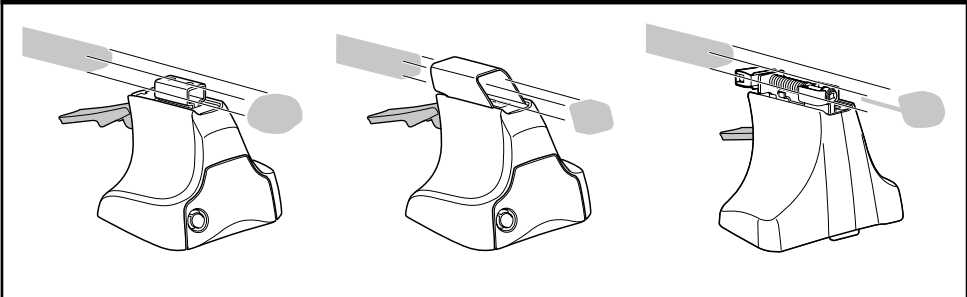
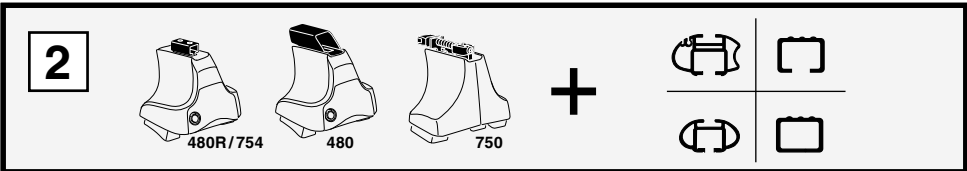
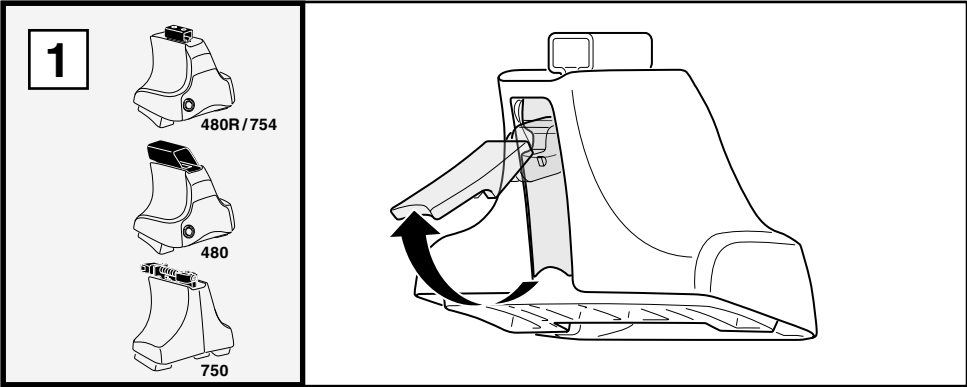
480

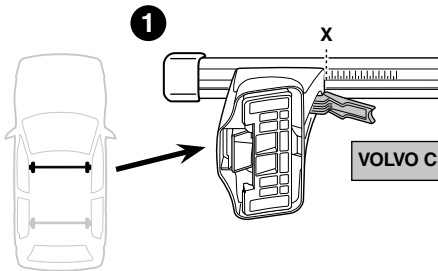
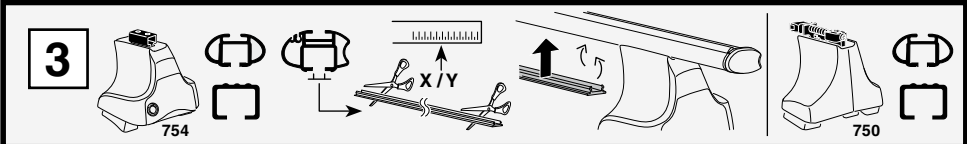


750

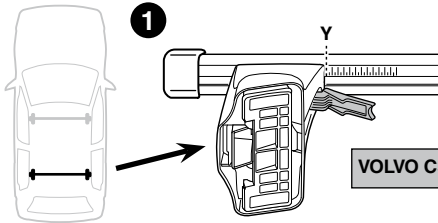
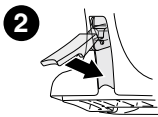


Kit

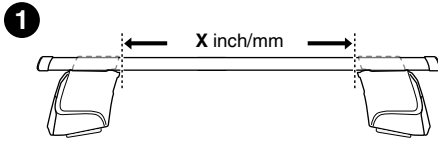
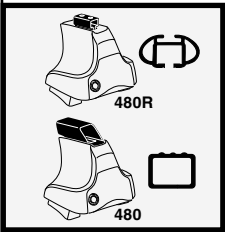
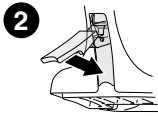




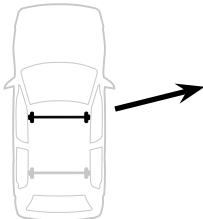
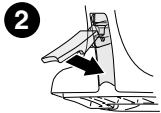
X
VOLVO C30, 3-dr Coupé, 07- / *08- 40,5



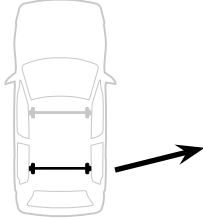
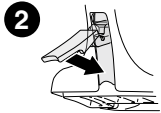
Y
VOLVO C30, 3-dr Coupé, 07- / *08- 25



X inch	X mm
VOLVO C30, 3-dr Coupé, 07- / *08- 41 5/8"	1056 mm



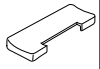
Y inch	Y mm
VOLVO C30, 3-dr Coupé, 07- / *08- 35 1/2"	901 mm



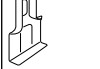
4

VOLVO C30, 3-dr Coupé, 07-/*08-

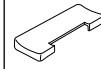
204



889



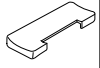
206



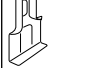
842



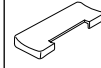
273



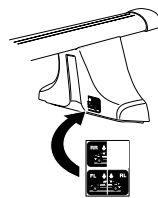
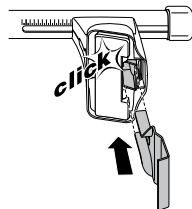
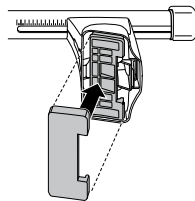
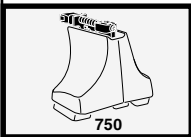
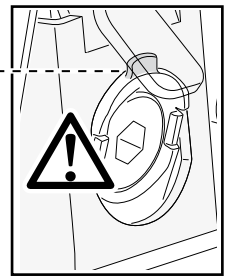
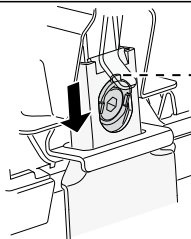
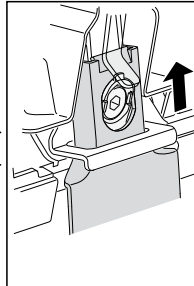
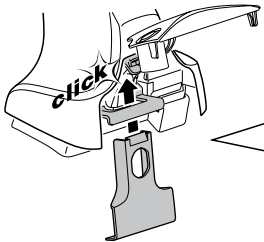
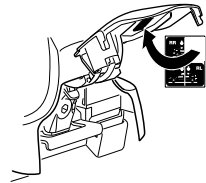
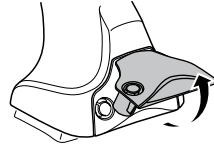
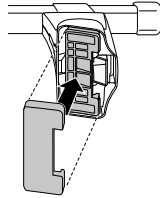
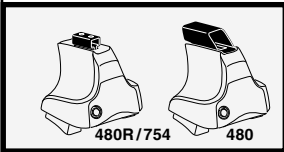
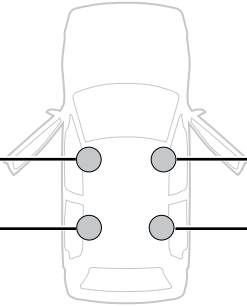
841



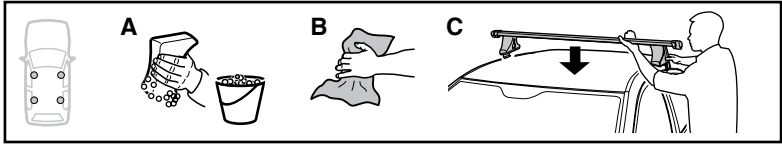
274



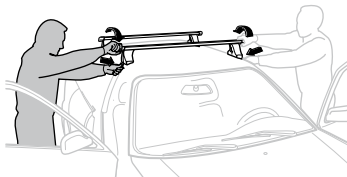
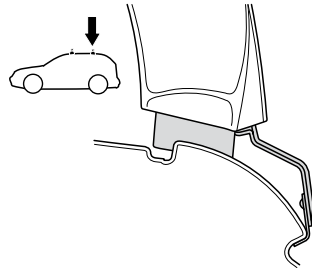
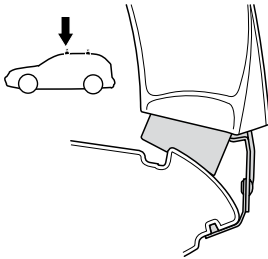
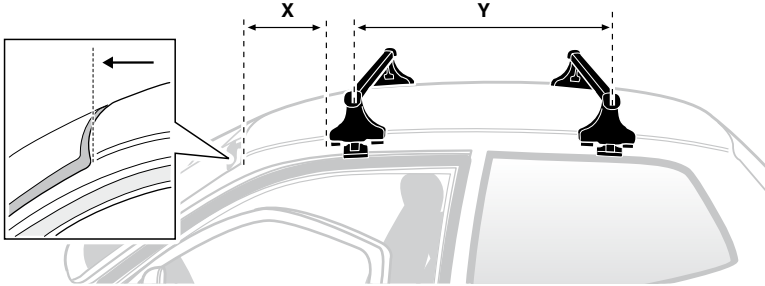
841



5



VOLVO C30, 3-dr Coupé, 07- / *08-	X mm	Y mm	X inch	Y inch
	220 mm	770 mm	8 5/8"	30 3/8"



GB/US Tighten alternately

D Die Schrauben abwechselnd anziehen

F Serrer alternativement chaque côté

NL Afwisselend aan de linker- en de rechterkant aandraaien

I Alternare il serraggio delle viti

E Apertar alternativamente

PT Aperte alternadamente

S Dra åt växelvis

FIN Kierrä vuorotellen

EST Pinguldage vaheldumisi

LAT Pievelciēt pamišus

LIT Užsukinėkite pakaitomis

PL Śruby dokręcaj naprzemiennie

RU Затягивайте попеременно

CZ Pokręťta bagażníka dokręcaj dokręcaj naprzemiennie.

SK Doťahujte striedavo

SLO Privijajte izmenično.

HR Naizmjenično zategnite

HU Egymástól függetlenül szorítandó

GR Σφιγγετε εναλλάξ

TR Dönüşümlü sıkın

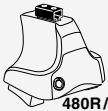
中文 交替拧紧

한국어 번갈아 가며 조이십시오.

日本語 交互に締め付けてください。

ไทย ชั้นโนแบบสลับ

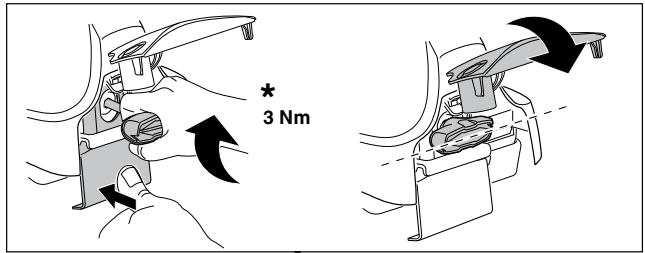
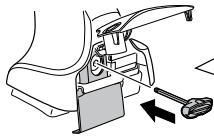
6



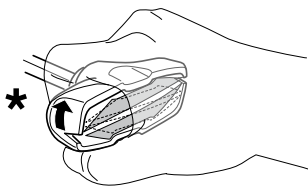
480R/754



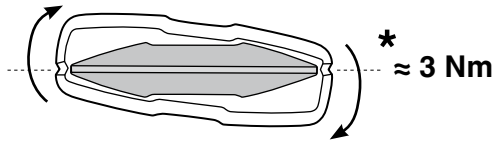
480



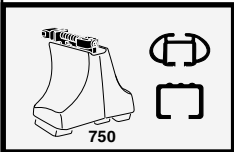
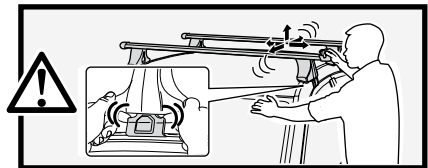
*
3 Nm



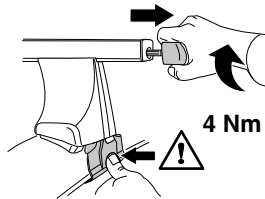
*



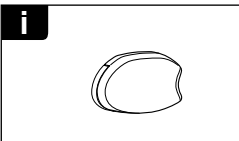
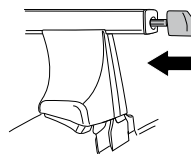
*
≈ 3 Nm



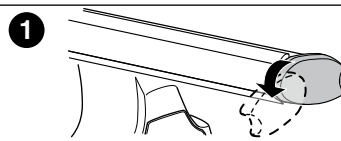
750



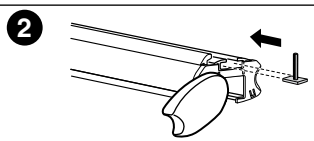
4 Nm



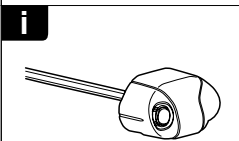
i



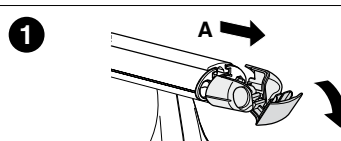
1



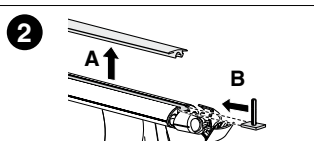
2



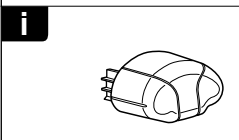
i



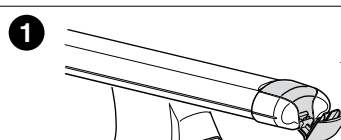
1



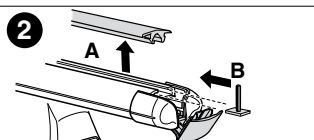
2



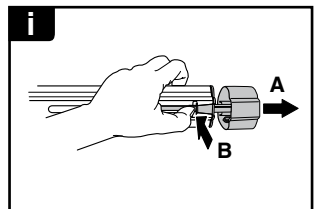
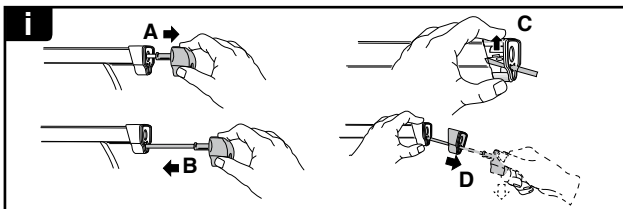
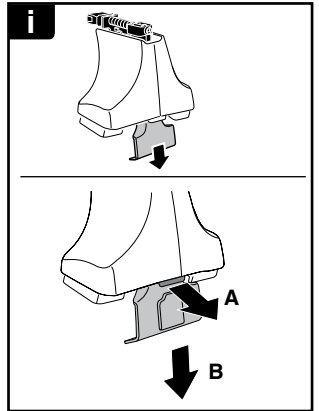
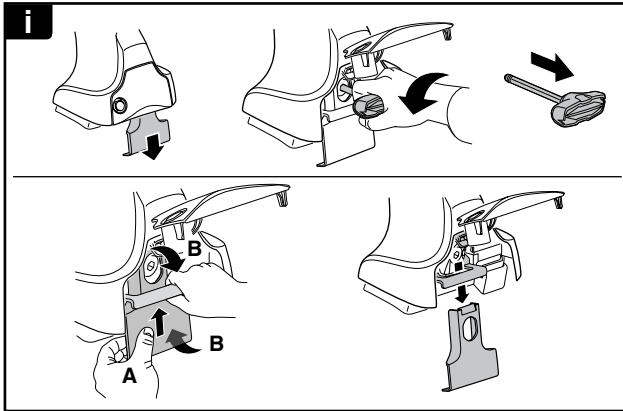
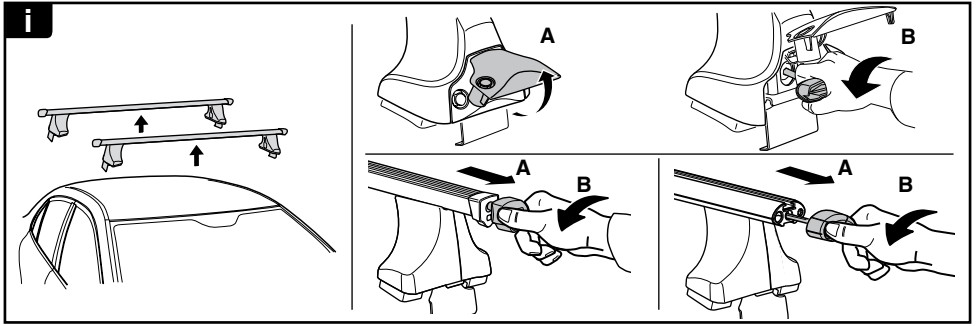
i



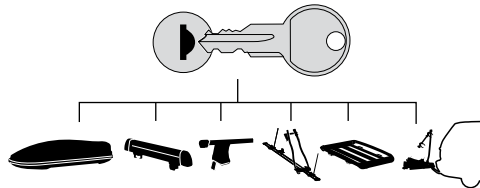
1



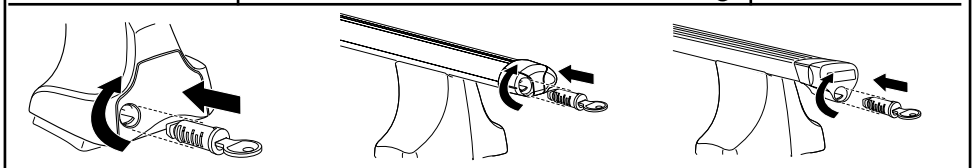
2



THULE
SWEDEN
**ONE
KEY
SYSTEM**



- 544 (x4)
- 596 (x6)
- 588 (x8)
- NA 510 (x10)
- EUR 452 (x12)
- ASIA



WW ▶ Thule Sweden AB, Box 69, 330 33 Hillerstorp, SWEDEN
NA ▶ Thule Inc., 42 Silvermine Road, Seymour, Connecticut 06483, USA

info@thule.com
customer.service@thule.com

www.thule.com