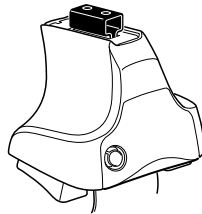


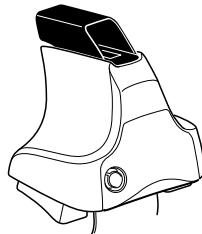
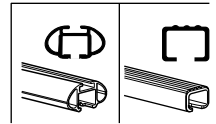
Kit 1438

LEXUS ES 350, 4-dr Sedan, *07–
TOYOTA Aurion, 4-dr Sedan, 06–
TOYOTA Camry, 4-dr Sedan, 06-11, 12– / *07-11, 12–

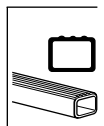
*North America



754 Rapid System
480R Rapid Traverse (North America)



480 Traverse (North America)



754 Rapid System
480R Rapid Traverse (North America)

754 Rapid System
480R Rapid Traverse (North America)

480 Traverse (North America)

(North America)

04 x 2
88 x 4
120 x 1
121 x 1

x 1

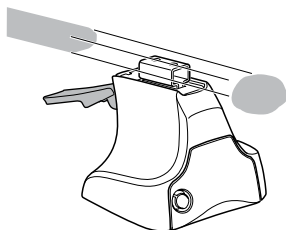
1



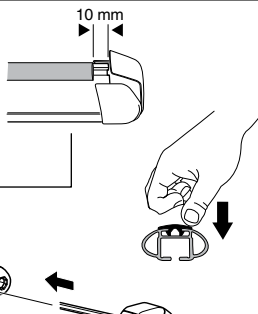
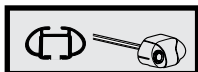
2



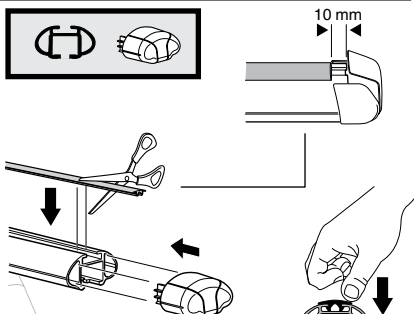
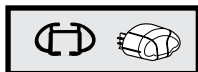
754 Rapid System
480R Rapid Traverse
(North America)



x4



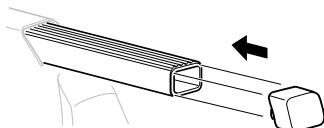
x4



x4



480 Traverse
(North America)

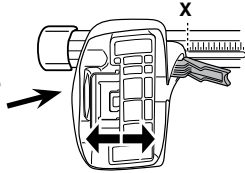


x4

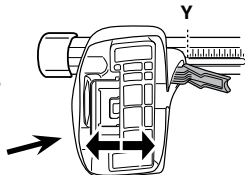
3



754 Rapid System



	X
LEXUS ES 350 , 4-dr Sedan, *07–	38
TOYOTA Aurion , 4-dr Sedan, 06–	38
TOYOTA Camry , 4-dr Sedan, 06-11 / *07-11	38
TOYOTA Camry , 4-dr Sedan, 12– / *12–	36



	Y
LEXUS ES 350 , 4-dr Sedan, *07–	38,5
TOYOTA Aurion , 4-dr Sedan, 06–	38,5
TOYOTA Camry , 4-dr Sedan, 06-11 / *07-11	38,5
TOYOTA Camry , 4-dr Sedan, 12– / *12–	35,5

3



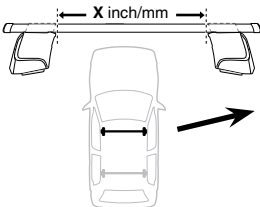
480R Rapid Traverse



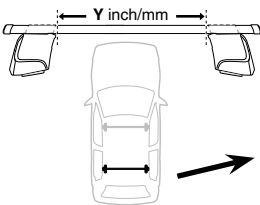
480 Traverse



(North America)

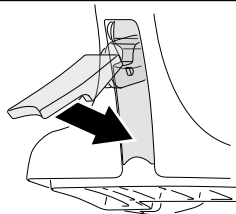


	X inch	X mm
LEXUS ES 350 , 4-dr Sedan, *07–	40 ⁵/₈ "	1031 mm
TOYOTA Aurion , 4-dr Sedan, 06–	40 ⁵/₈ "	1031 mm
TOYOTA Camry , 4-dr Sedan, 06-11 / *07-11	40 ⁵/₈ "	1031 mm
TOYOTA Camry , 4-dr Sedan, 12– / *12–	39 ³/₄ "	1011 mm



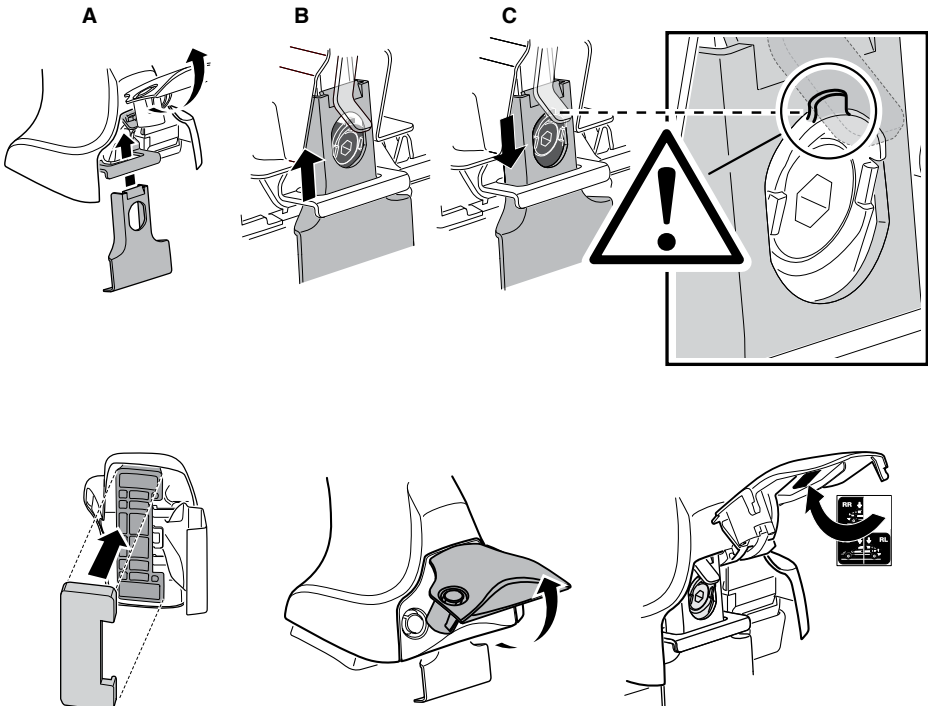
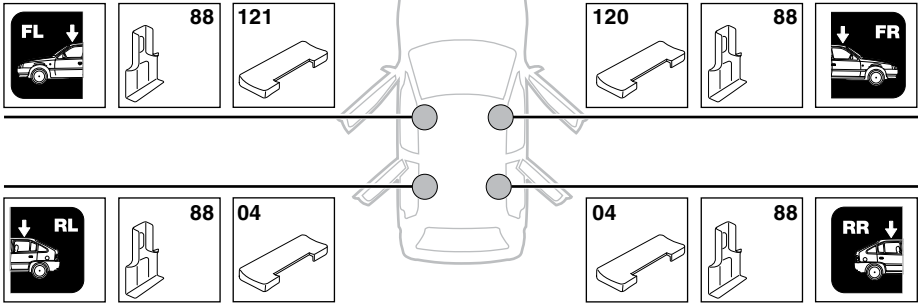
	Y inch	Y mm
LEXUS ES 350 , 4-dr Sedan, *07–	40 ³/₄ "	1036 mm
TOYOTA Aurion , 4-dr Sedan, 06–	40 ³/₄ "	1036 mm
TOYOTA Camry , 4-dr Sedan, 06-11 / *07-11	40 ³/₄ "	1036 mm
TOYOTA Camry , 4-dr Sedan, 12– / *12–	39 ⁵/₈ "	1006 mm

4

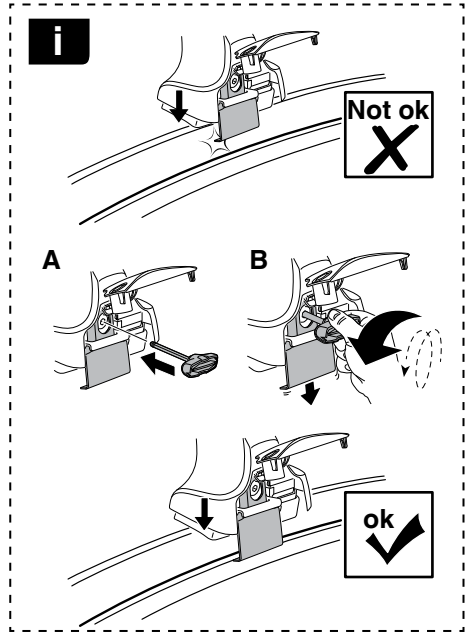
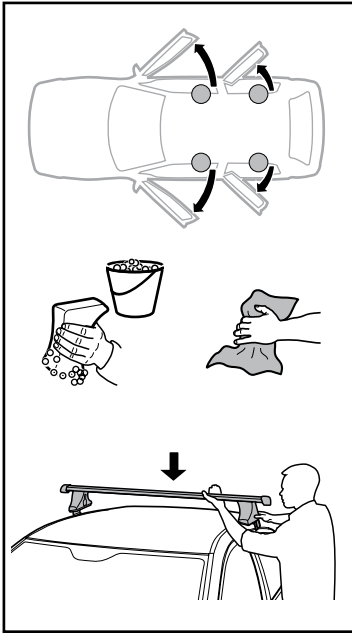


5

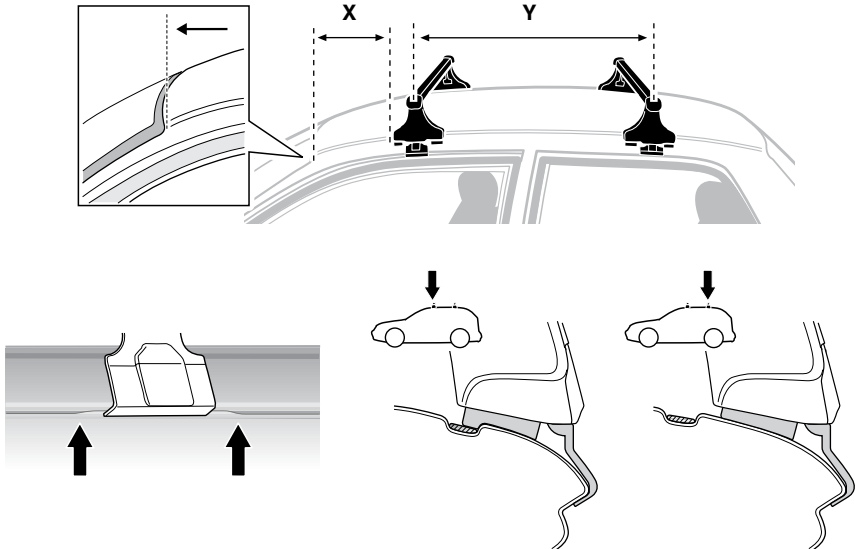
LEXUS ES 350, 4-dr Sedan, *07–
TOYOTA Aurion, 4-dr Sedan, 06–
TOYOTA Camry, 4-dr Sedan, 06-11, 12– / *07-11, 12–



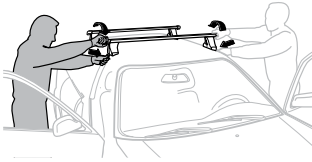
6



	X mm	Y mm	X inch	Y inch
LEXUS ES 350, 4-dr Sedan, *07-	230 mm	680 mm	9"	26 ³ / ₄ "
TOYOTA Aurion, 4-dr Sedan, 06-	230 mm	680 mm	9"	26 ³ / ₄ "
TOYOTA Camry, 4-dr Sedan, 06-11, 12- / *07-11, 12-	230 mm	680 mm	9"	26 ³ / ₄ "



7



GB/US Tighten alternately
 D Die Schrauben abwechselnd anziehen
 F Serrer alternativement chaque côté
 NL Afwisselend aan de linker- en de rechterkant aandraaien
 I Alternare il serraggio delle viti
 E Apertar alternativamente
 PT Aperte alternadamente
 S Dra åt växelvis
 FIN Kierrä vuorotellen
 EST Pinguldage vaheldumisi
 LAT Pieļieciet pamišus
 LIT Užsukinėkite pakaitomis
 PL Śruby dokręcaj naprzemiennie
 RU Затягивайте попеременно

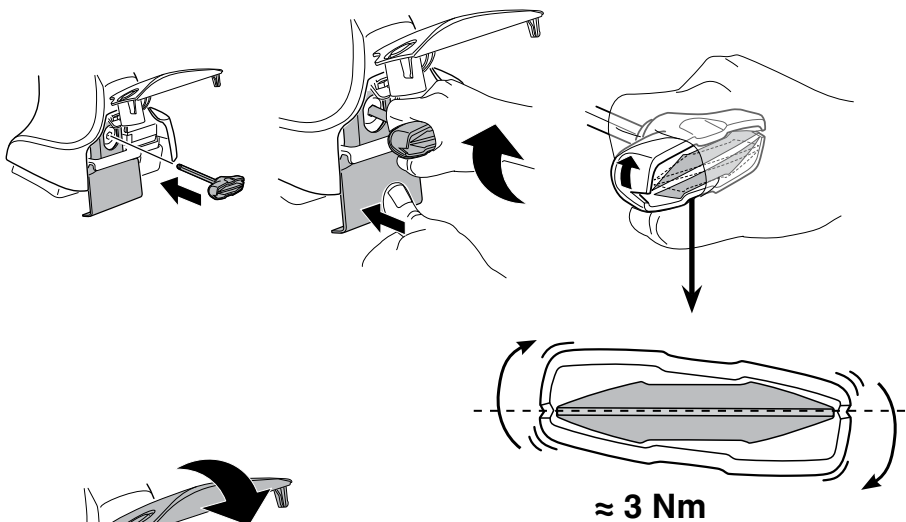
CZ Pokręťta bagażnika dokręcaj dokręcaj naprzemiennie.
 SK Dofahajte striedavo
 SLO Privijajte izmenično.
 HR Naizmjerno zategnite
 HU Egymástól függetlenül szorítandó
 GR Σφιγίγτες εναλλάξ
 TR Dönüşümlü sıkın

中文 交替拧紧

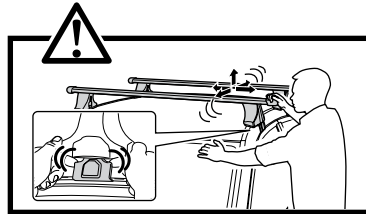
한국어 번갈아 가며 조이십시오.

日本語 交互に締め付けてください。

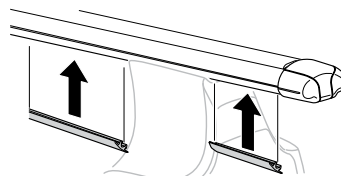
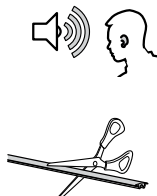
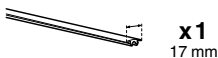
ไทย ชันในแบบสลับ

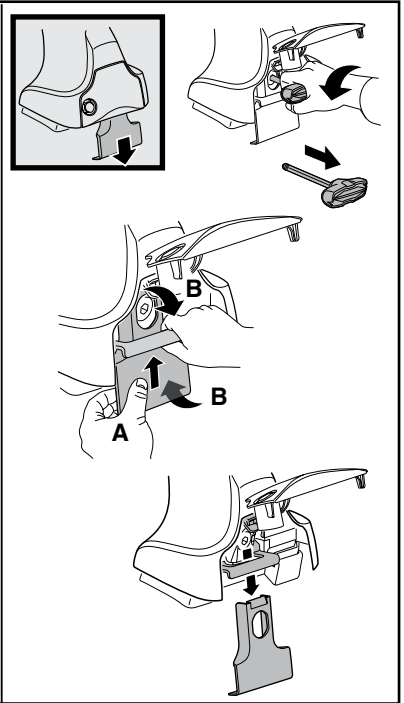
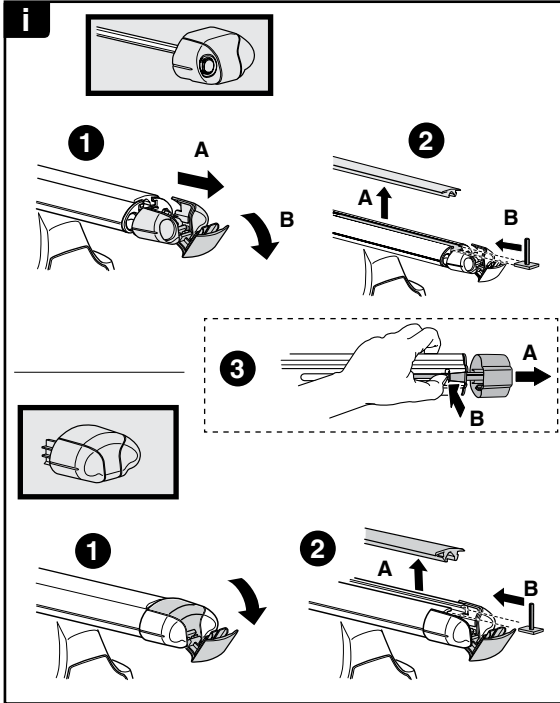


≈ 3 Nm



8





THULE
SWEDEN
**ONE
KEY
SYSTEM**



		(x4)
		(x6)
		(x8)
NA		(x10)
EUR		(x12)
ASIA		



WW ▶ Thule Sweden AB, Box 69, 330 33 Hillerstorp, SWEDEN
NA ▶ Thule Inc., 42 Silvermine Road, Seymour, Connecticut 06483, USA

info@thule.com
customer.service@thule.com

www.thule.com