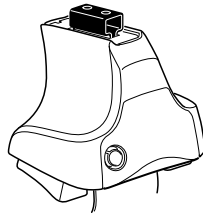
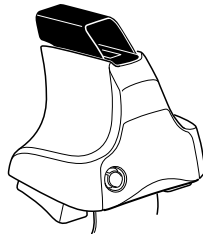
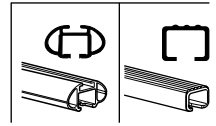


Kit 1431

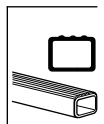
SUBARU Tribeca, 5-dr SUV, 06–



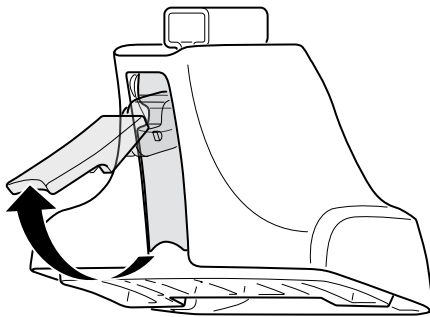
754 Rapid System
480R Rapid Traverse (North America)



480 Traverse (North America)



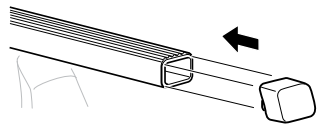
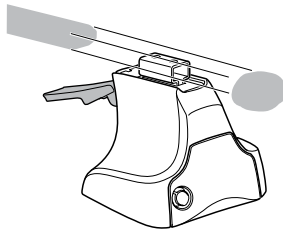
1



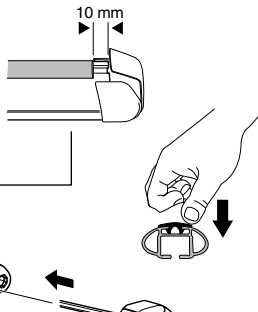
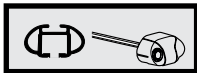
2



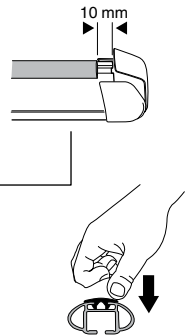
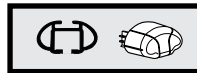
754 Rapid System
480R Rapid Traverse
(North America)



x4



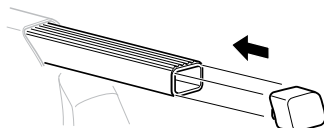
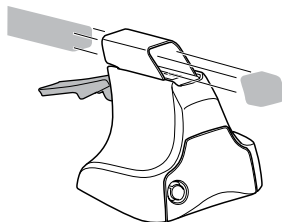
x4



x4

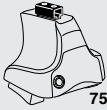


480 Traverse
(North America)

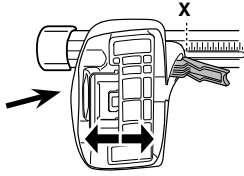


x4

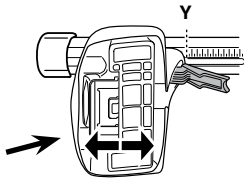
3



754 Rapid System



	X
SUBARU Tribeca, 5-dr SUV, 06-	52,5



	Y
SUBARU Tribeca, 5-dr SUV, 06-	47

3

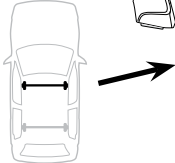


480R Rapid Traverse

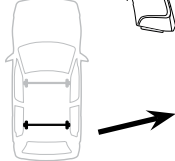


480 Traverse

(North America)

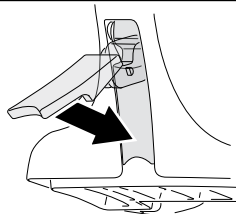


	X inch	X mm
SUBARU Tribeca, 5-dr SUV, 06-	46 1/4"	1176 mm



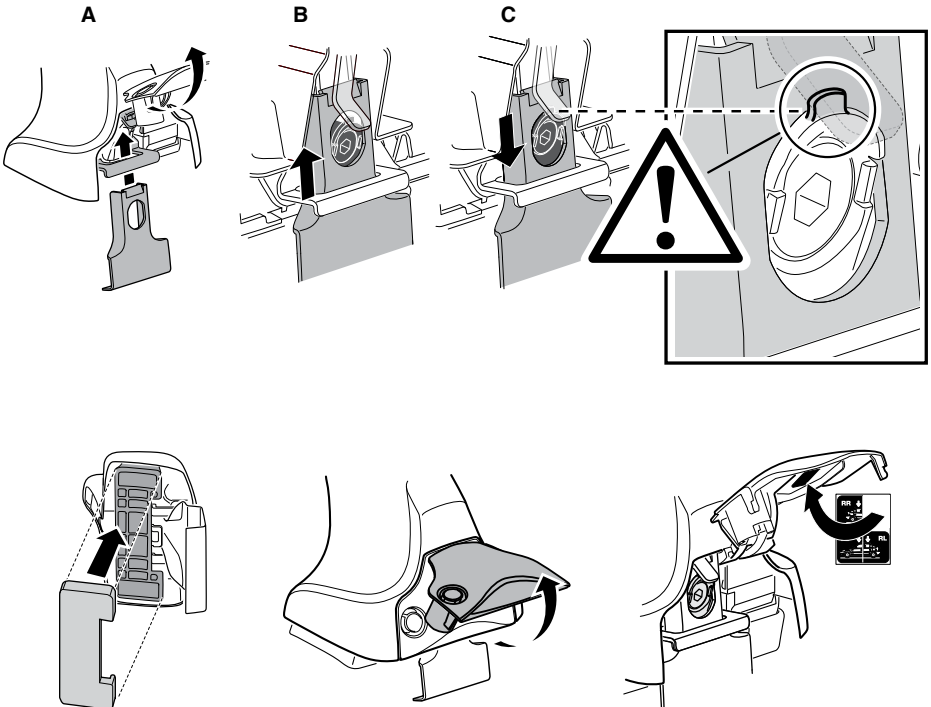
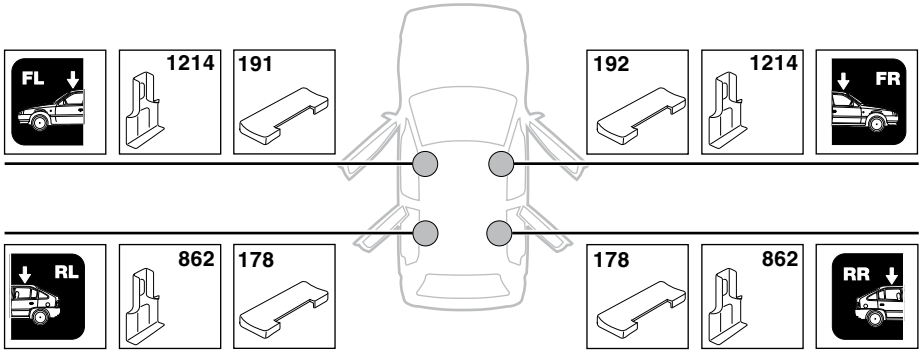
	Y inch	Y mm
SUBARU Tribeca, 5-dr SUV, 06-	44 1/8"	1121 mm

4

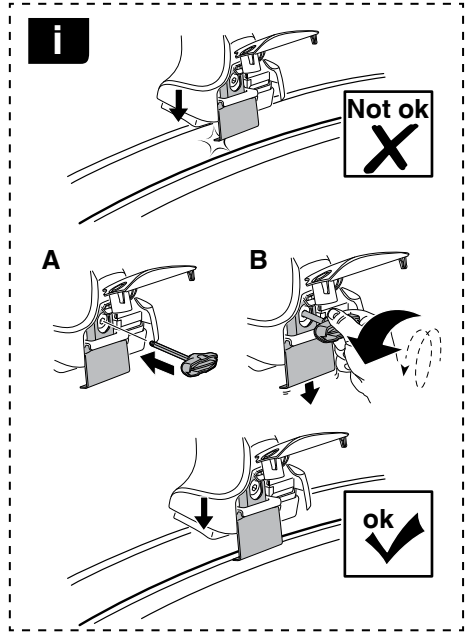
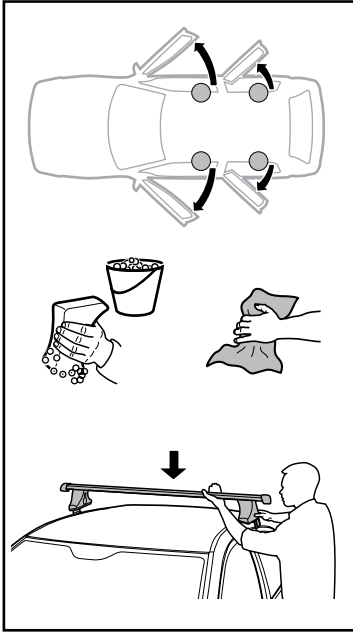


5

SUBARU Tribeca, 5-dr SUV, 06-

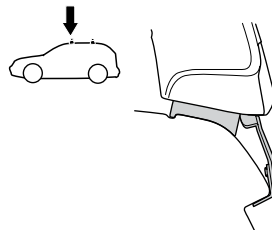
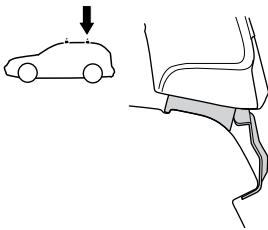
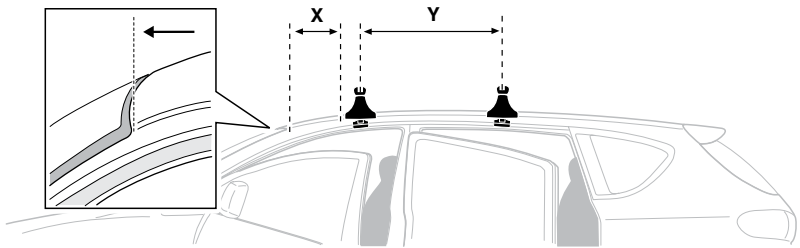


6

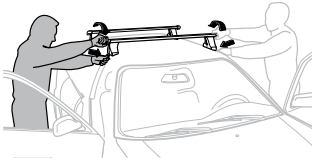


SUBARU Tribeca, 5-dr SUV, 06-

X mm	Y mm	X inch	Y inch
300 mm	750 mm	11 3/4"	29 1/2"



7



GB/US	Tighten alternately
D	Die Schrauben abwechselnd anziehen
F	Serrer alternativement chaque côté
NL	Afwisselend aan de linker- en de rechterkant aandraaien
I	Alternare il serraggio delle viti
E	Apertar alternativamente
PT	Aperte alternadamente
S	Dra åt växelvis
FIN	Kierrä vuorotellen
EST	Pinguldage vaheldumisi
LAT	Pielveiciet pamišus
LIT	Užsukinėkite pakaitomis
PL	Śruby dokręcaj naprzemiennie
RU	Загряивайте попеременно

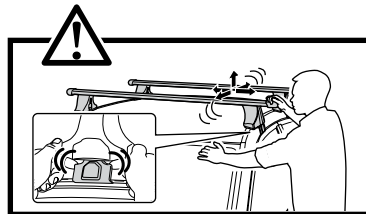
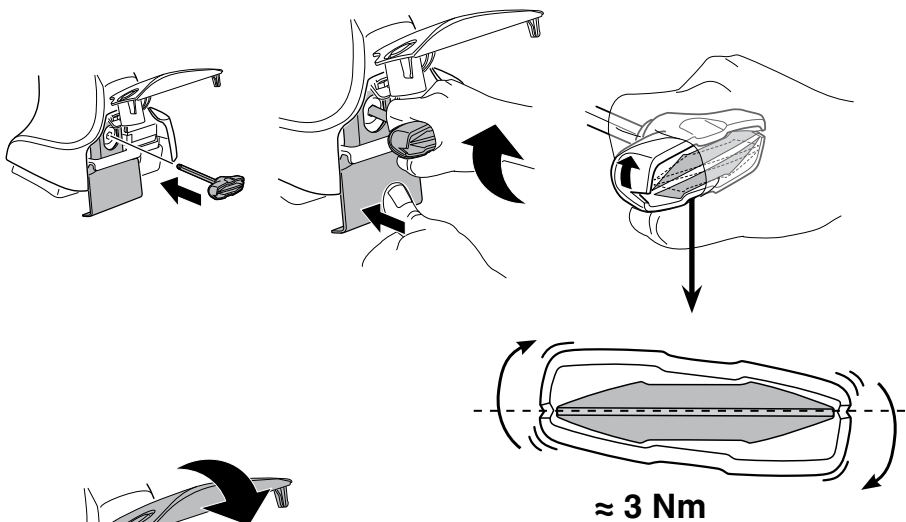
CZ	Pokręřta bagažníka dokręřcaj dokręřcaj naprzemiennie.
SK	Dofahajte striedavo
SLO	Privijajte izmenično.
HR	Naizmjenično zategnite
HU	Egymástól függetlenül szorítandó
GR	Σφιγίγτες εναλλάξ
TR	Dönüşümlü sıkın

中文 交替拧紧

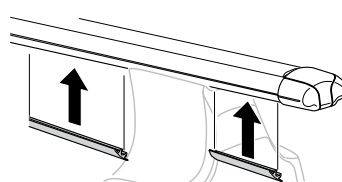
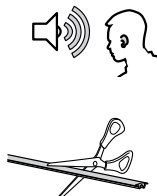
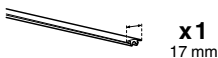
한국어 번갈아 가며 조이십시오.

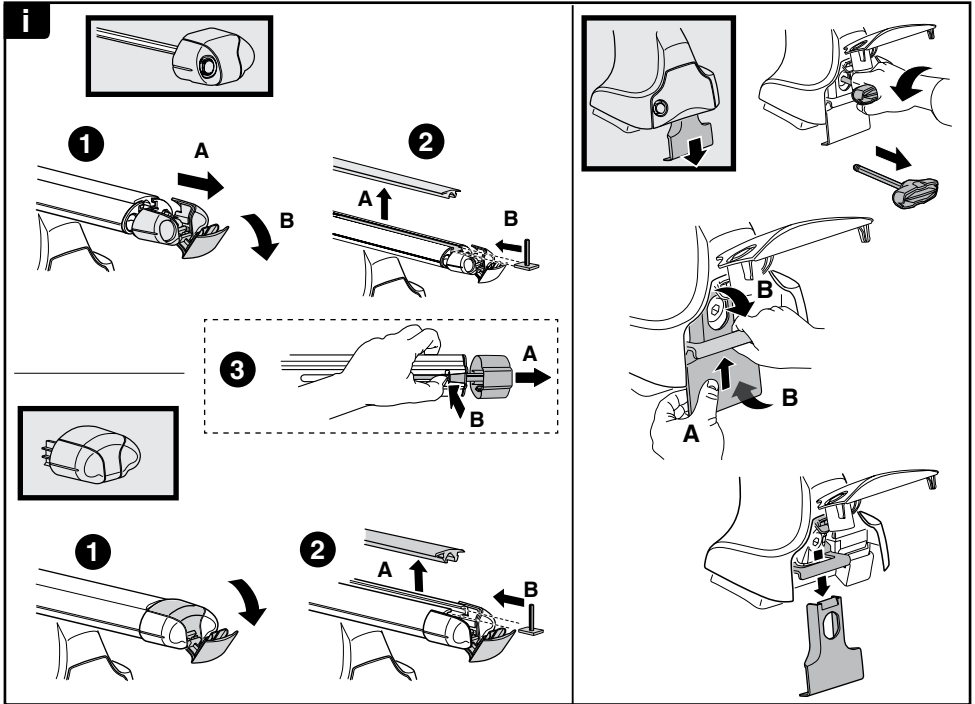
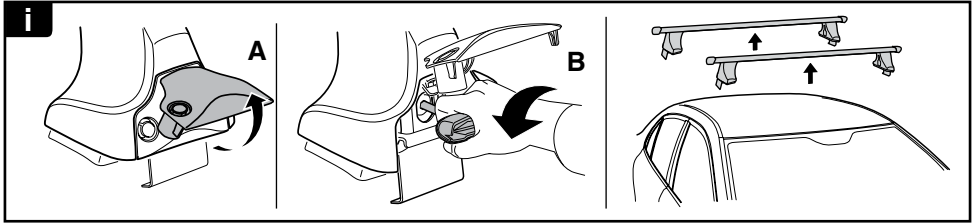
日本語 交互に締め付けてください。

ไทย ชันในแบบสลับ

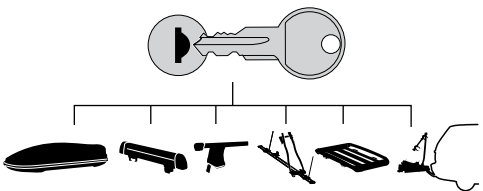


8





THULE
SWEDEN
**ONE
KEY
SYSTEM**



- 544 (x4)
 - 596 (x6)
 - 588 (x8)
 - 510 (x10)
 - 452 (x12)
- NA
EUR
ASIA

