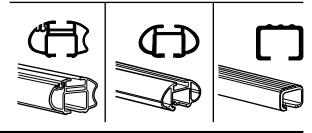
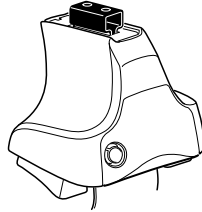


Kit 1426

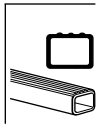
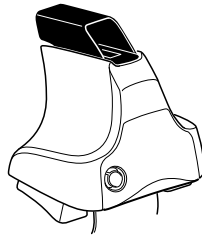
LEXUS IS (MK II), 4-dr Sedan, 05–
LEXUS IS, 4-dr Sedan, *06–

*North America

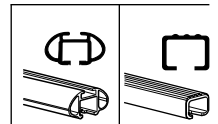
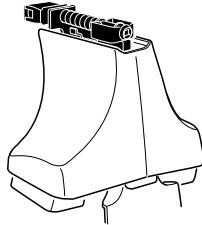
480R
754



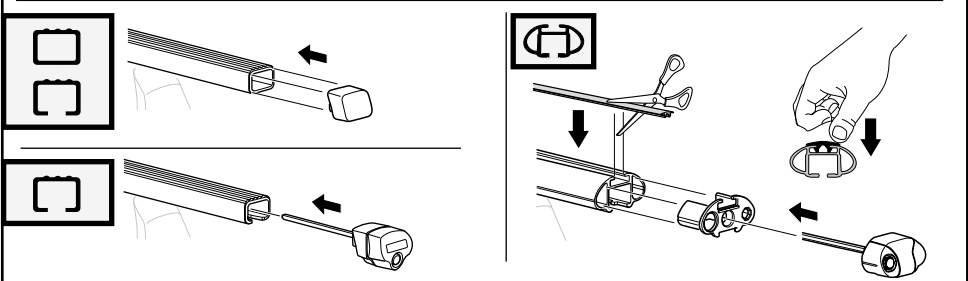
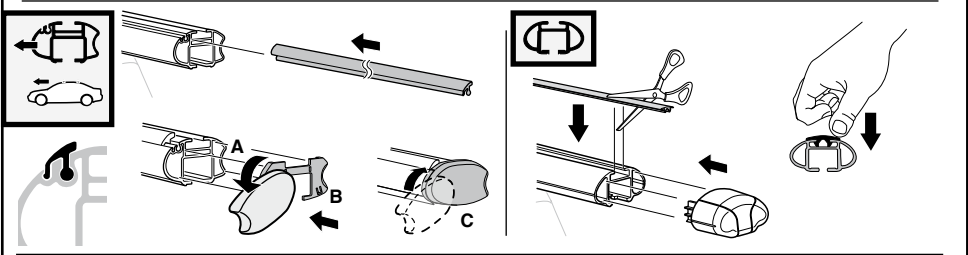
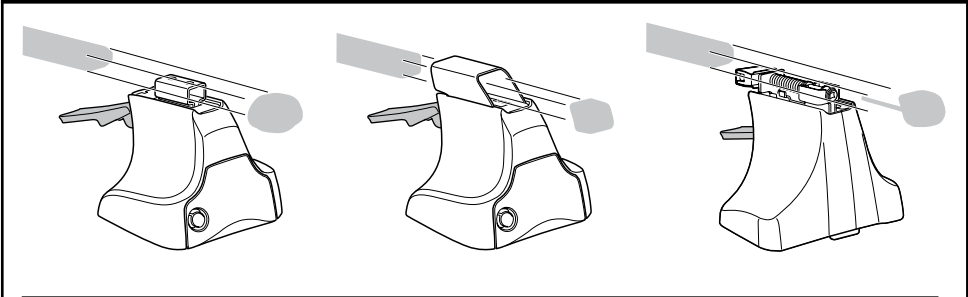
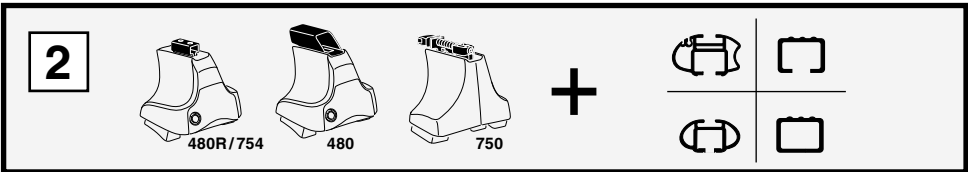
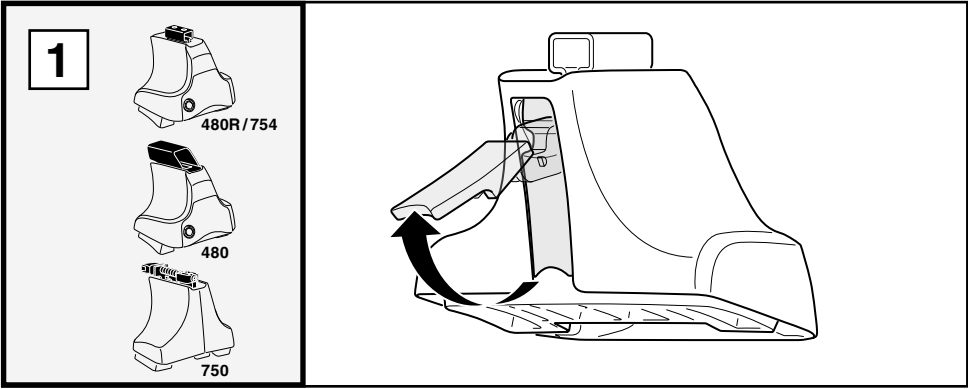
480

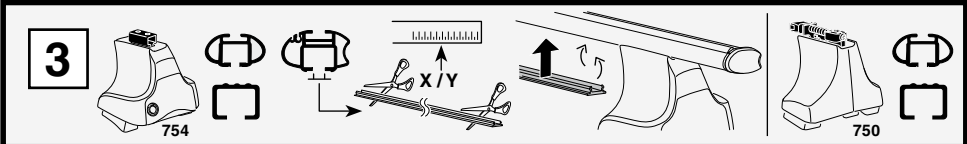


750



Kit





1

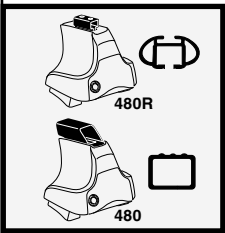
2

	X
LEXUS IS (MK II), 4-dr Sedan, *05-	31
LEXUS IS, 4-dr Sedan, *06-	31

1

2

	Y
LEXUS IS (MK II), 4-dr Sedan, *05-	28.5
LEXUS IS, 4-dr Sedan, *06-	28.5



1

2

	X inch	X mm
LEXUS IS (MK II), 4-dr Sedan, *05-	37 ⁷ / ₈ "	961 mm
LEXUS IS, 4-dr Sedan, *06-	37 ⁷ / ₈ "	961 mm

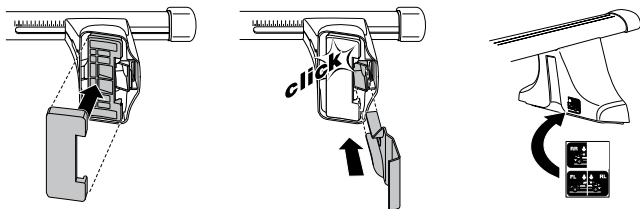
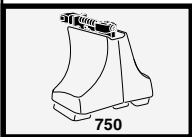
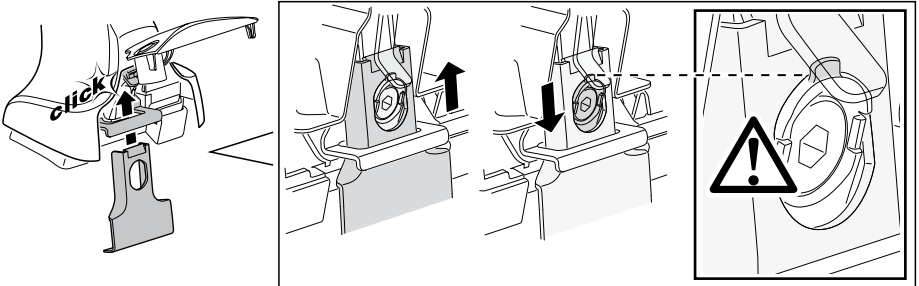
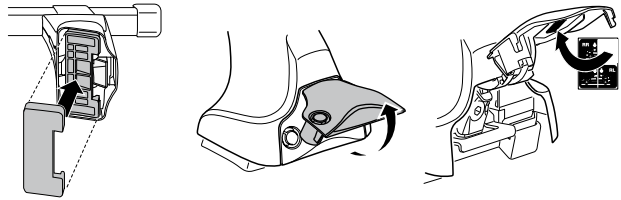
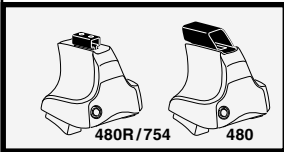
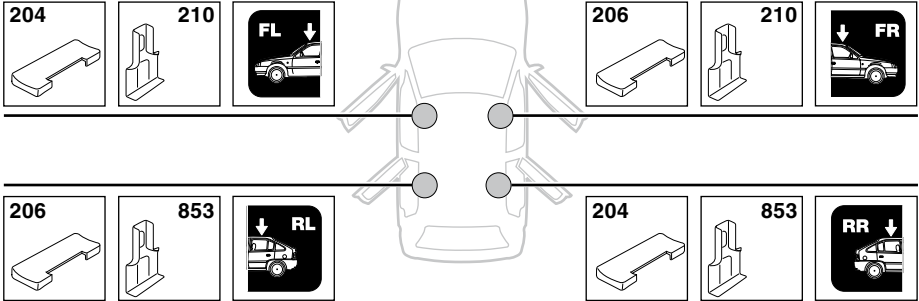
1

2

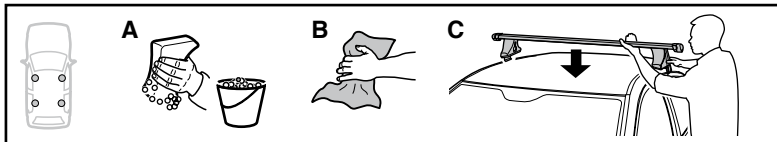
	Y inch	Y mm
LEXUS IS (MK II), 4-dr Sedan, *05-	36 ⁷ / ₈ "	936 mm
LEXUS IS, 4-dr Sedan, *06-	36 ⁷ / ₈ "	936 mm

4

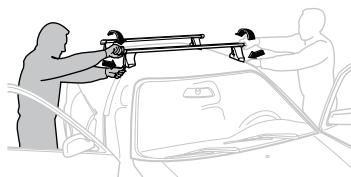
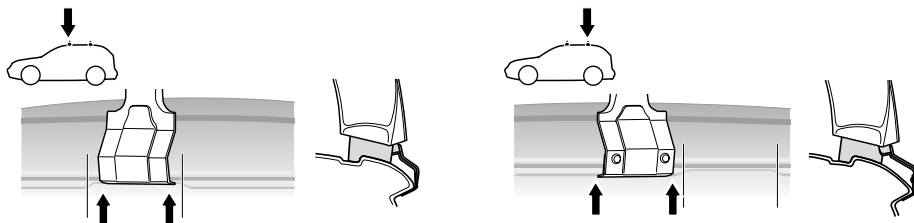
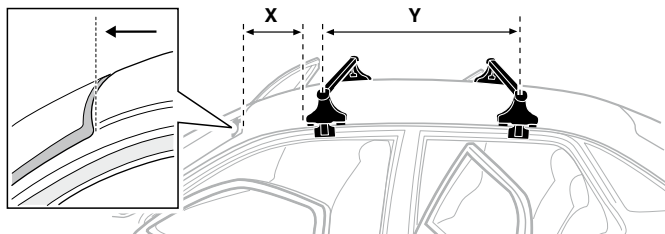
LEXUS IS (MK II), 4-dr Sedan, 05-
LEXUS IS, 4-dr Sedan, *06-



5



	X mm	Y mm	X inch	Y inch
LEXUS IS (MK II), 4-dr Sedan, 05-	270 mm	620 mm	10 ⁵ / ₈ "	24 ³ / ₈ "
LEXUS IS, 4-dr Sedan, *06-	270 mm	620 mm	10 ⁵ / ₈ "	24 ³ / ₈ "



GB/US Tighten alternately

D Die Schrauben abwechselnd anziehen

F Serrer alternativement chaque côté

NL Afwisselend aan de linker- en de rechterkant aandraaien

I Alternare il serraggio delle viti

E Serrare alternativamente

PT Aperte alternadamente

S Dra åt växelvis

FIN Kierrä vuorotellen

EST Pinguldage vaheldumisi

LAT Pielieciet pamišus

LIT Užsukinėkite pakaitomis

PL Śruby dokręcaj naprzemiennie

RU Затягивайте попеременно

CZ Pokręťta bagażníka dokręcaj dokręcaj naprzemiennie.

SK Doťahujte striedavo

SLO Privijajte izmenično.

HR Naizmjenično zategnite

HU Egymástól függetlenül szorítandó

GR Σφιγγετε εναλλάξ

TR Dönüşümlü sıkın

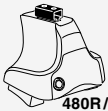
中文 交替拧紧

한국어 번갈아 가며 조이십시오.

日本語 交互に締め付けてください。

ไทย ชันโนแบบสลับ

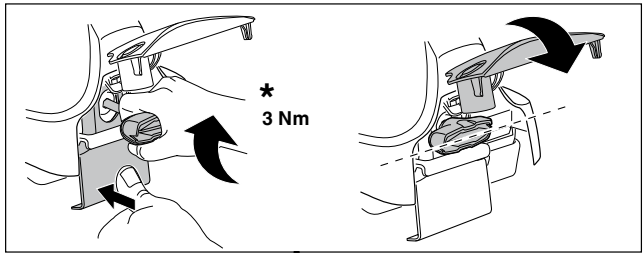
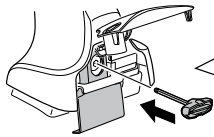
6



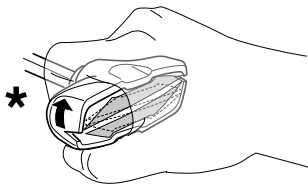
480R/754



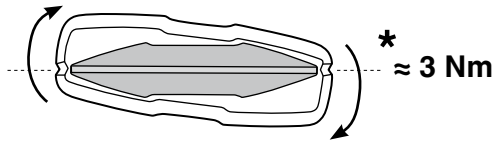
480



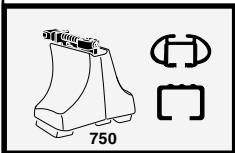
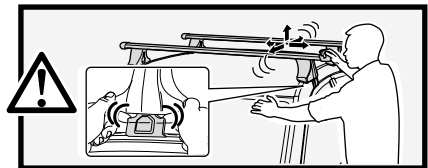
*
3 Nm



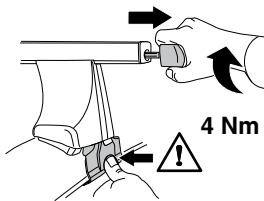
*



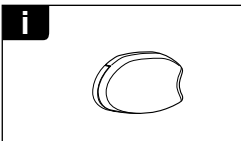
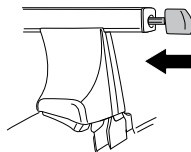
*
≈ 3 Nm



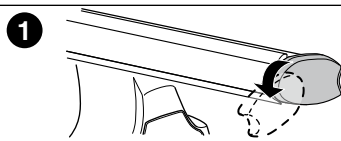
750



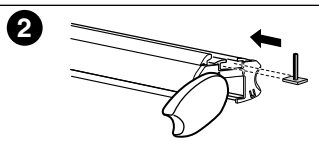
4 Nm



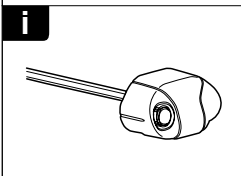
i



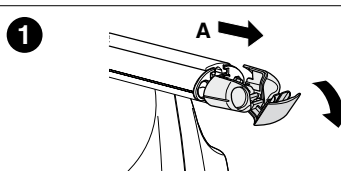
1



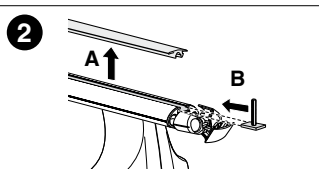
2



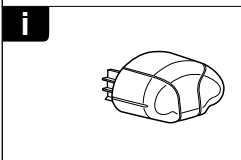
i



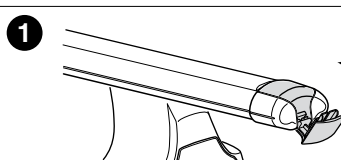
1



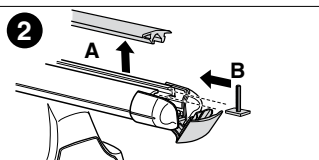
2



i



1



2



THULE
SWEDEN
**ONE
KEY
SYSTEM**



544		(x4)
596		(x6)
588		(x8)
NA 510		(x10)
EUR		
ASIA 452		(x12)



ww ▶ Thule Sweden AB, Box 69, 330 33 Hillerstorp, SWEDEN
NA ▶ Thule Inc., 42 Silvermine Road, Seymour, Connecticut 06483, USA

info@thule.com
customer.service@thule.com

www.thule.com