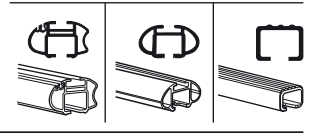
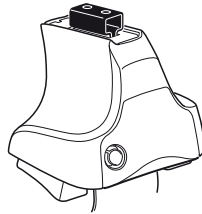


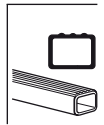
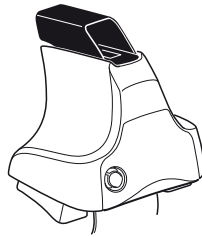
Kit 1413

FIAT Grande Punto, 3-dr Hatchback, 05–
FIAT Grande Punto, 5-dr Hatchback, 05–

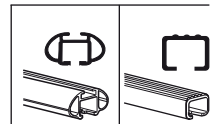
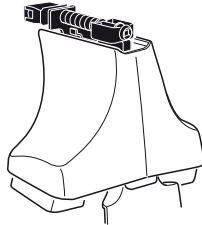
480R
754



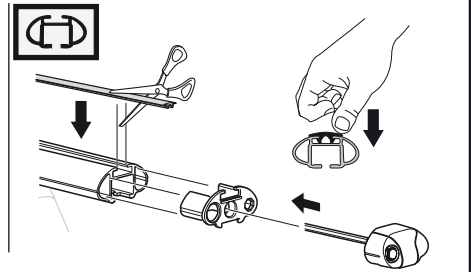
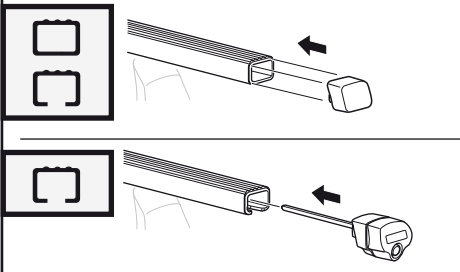
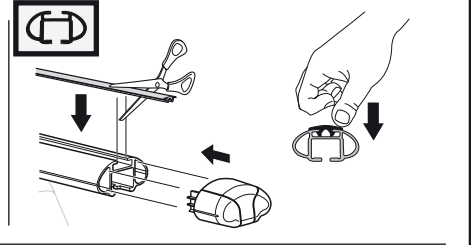
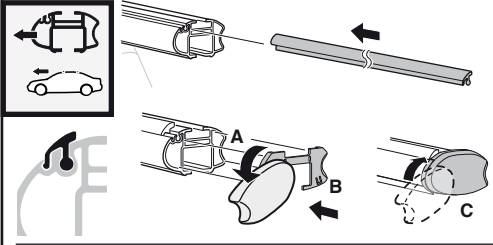
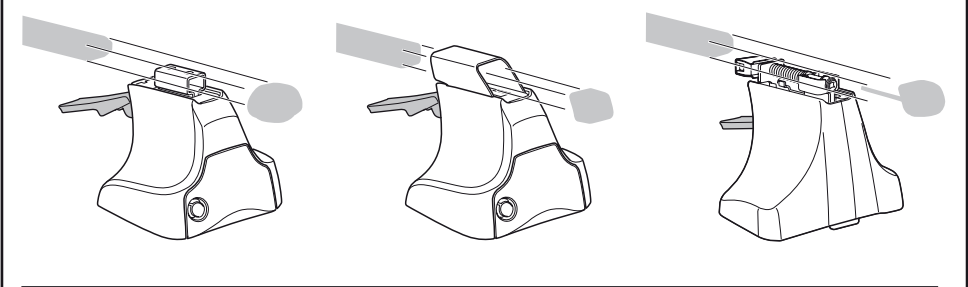
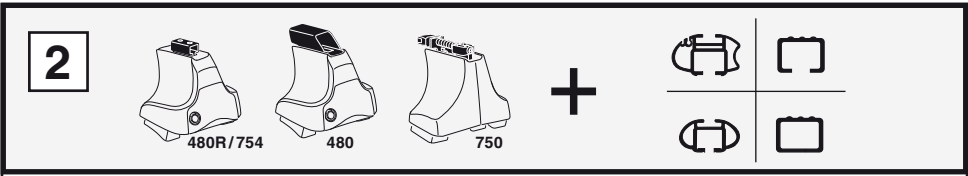
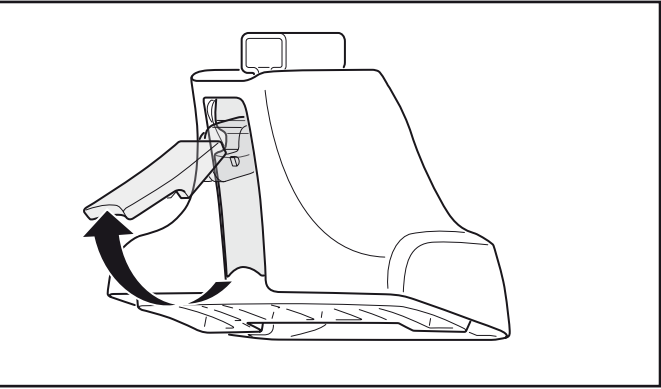
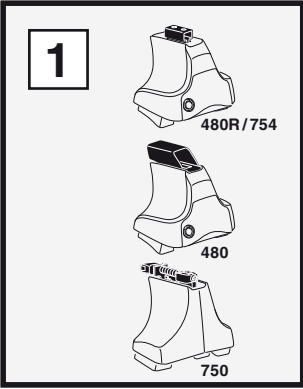
480

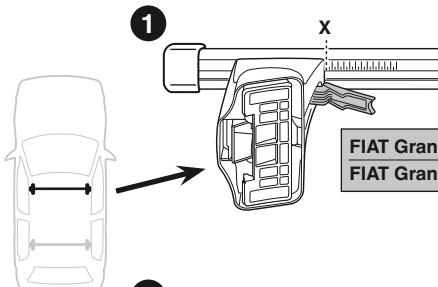
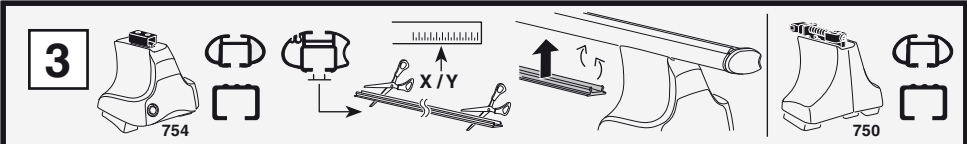


750

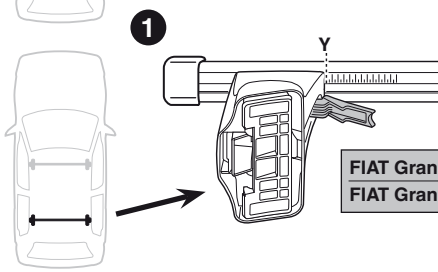


Kit

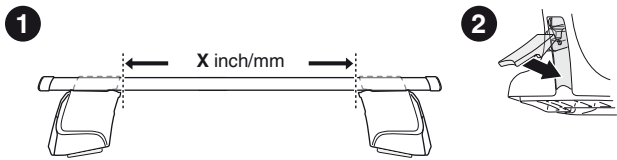
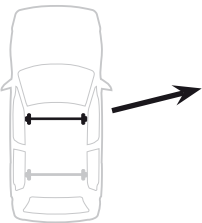
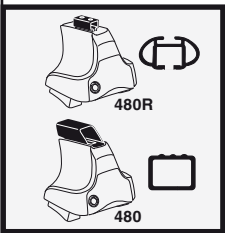




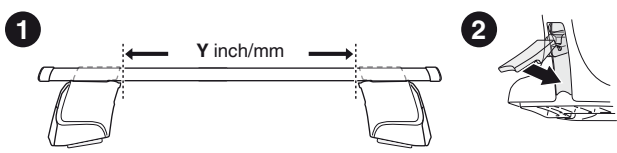
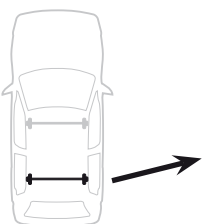
	X
FIAT Grande Punto, 3-dr Hatchback, 05-	26,5
FIAT Grande Punto, 5-dr Hatchback, 05-	26,5



	Y
FIAT Grande Punto, 3-dr Hatchback, 05-	26
FIAT Grande Punto, 5-dr Hatchback, 05-	19,5



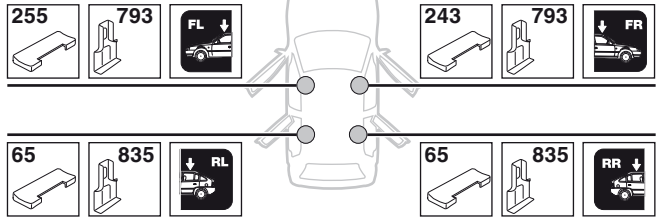
	X inch	X mm
FIAT Grande Punto, 3-dr Hatchback, 05-	36 1/8"	916 mm
FIAT Grande Punto, 5-dr Hatchback, 05-	36 1/8"	916 mm



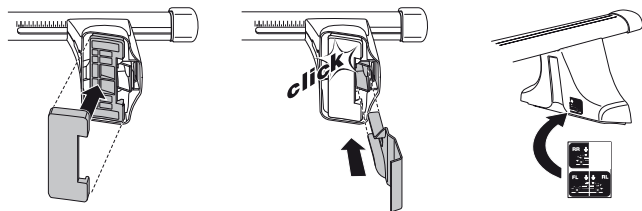
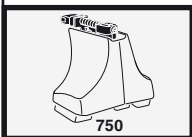
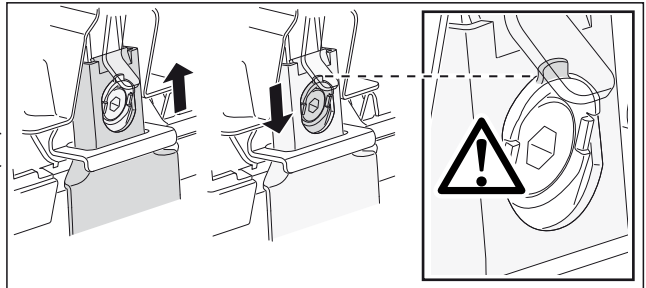
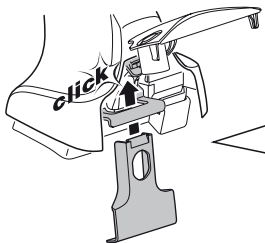
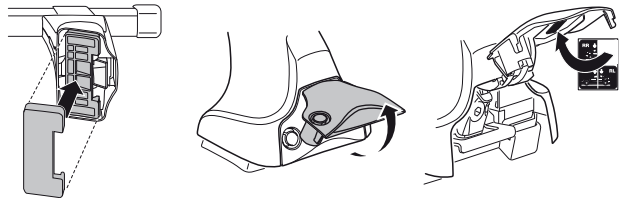
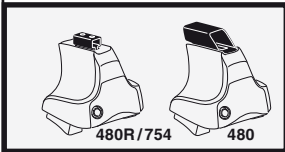
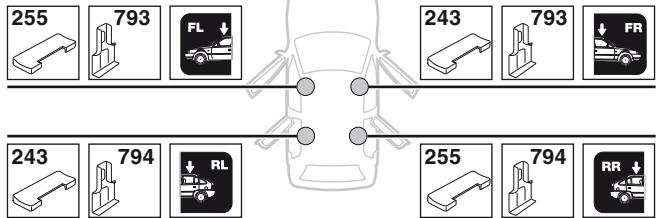
	Y inch	Y mm
FIAT Grande Punto, 3-dr Hatchback, 05-	35 7/8"	911 mm
FIAT Grande Punto, 5-dr Hatchback, 05-	33 1/4"	846 mm

4

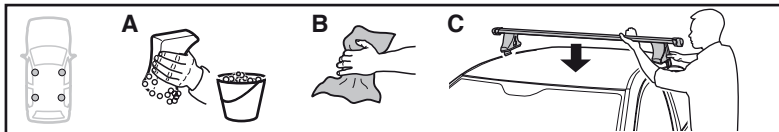
FIAT Grande Punto, 3-dr Hatchback, 05-



FIAT Grande Punto, 5-dr Hatchback, 05-

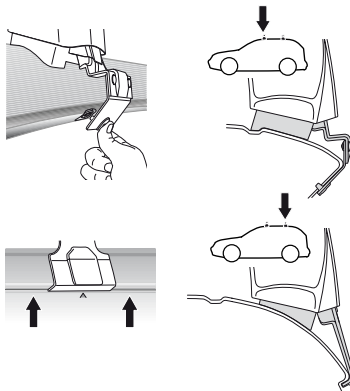
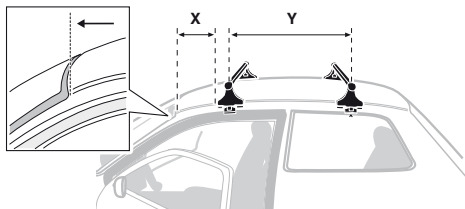


5

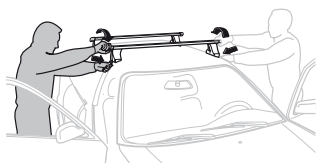
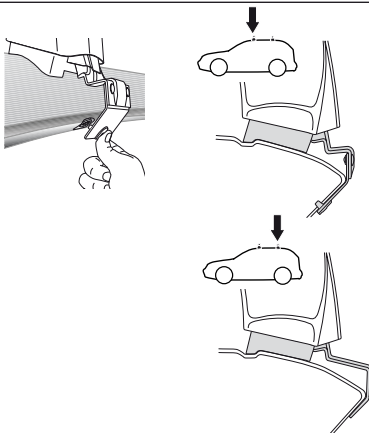
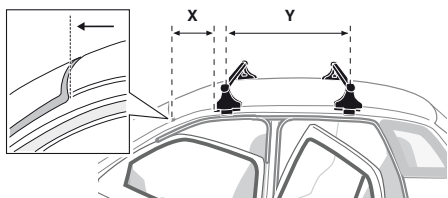


	X mm	Y mm	X inch	Y inch
FIAT Grande Punto, 3-dr Hatchback, 05-	250 mm	785 mm	9 7/8"	30 7/8"
FIAT Grande Punto, 5-dr Hatchback, 05-	250 mm	730 mm	9 7/8"	28 3/4"

FIAT Grande Punto, 3-dr Hatchback, 05-



FIAT Grande Punto, 5-dr Hatchback, 05-



- GB/US** Tighten alternately
- D** Die Schrauben abwechselnd anziehen
- F** Serrer alternativement chaque côté
- NL** Afwisselend aan de linker- en de rechterkant aandraaien
- I** Alternare il serraggio delle viti
- E** Apretar alternativamente
- PT** Aperte alternadamente
- S** Dra åt växelvis
- FIN** Kierrä vuorotellen
- EST** Pinguldage vaheldumisi
- LAT** Pielvelciēt pamīšus
- LIT** Užsukinėkite pakaitomis
- PL** Śruby dokręcaj naprzemiennie
- RU** Затягивайте попеременно

- CZ** Pokręťta bagażnika dokręcaj dokręcaj naprzemiennie.
- SK** Dotahujte striedavo
- SLO** Privijajte izmenično.
- HR** Naizmjenično zategnite
- HU** Egymástól függetlenül szorítandó
- GR** Σφιγγετε εναλλάξ
- TR** Dönüşümlü sıkın
- 中文** 交替拧紧
- 한국어** 번갈아 가며 조이십시오.
- 日本語** 交互に締め付けてください。
- ไทย** ชับในแบบสลับ

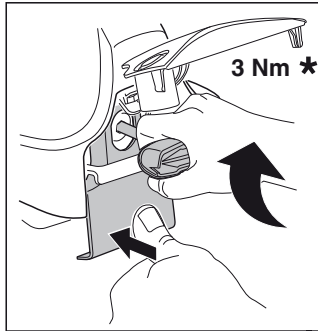
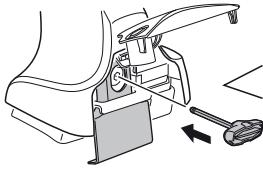
6



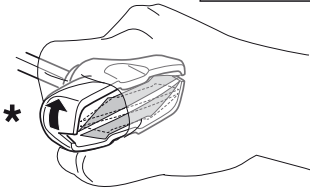
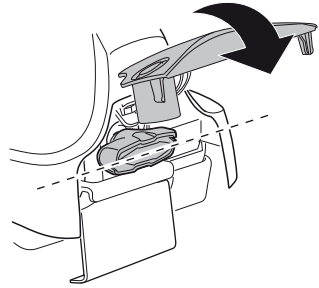
480R/754



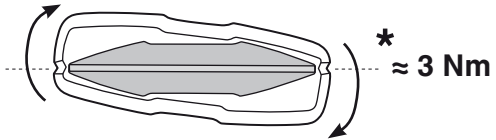
480



3 Nm *



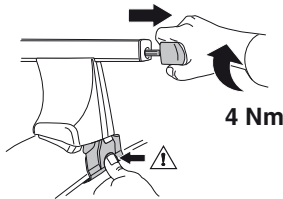
*



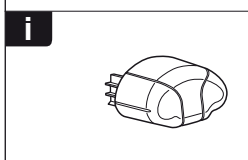
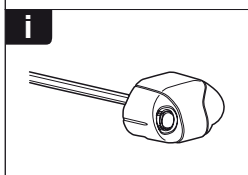
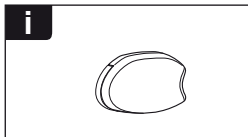
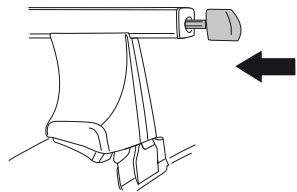
* ≈ 3 Nm



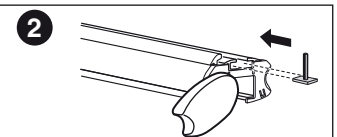
750



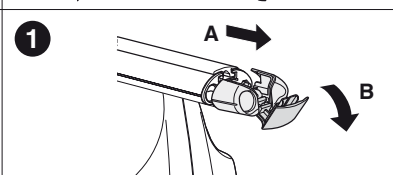
4 Nm



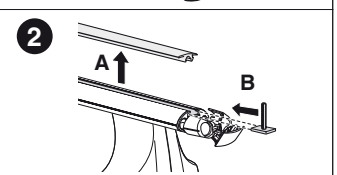
1



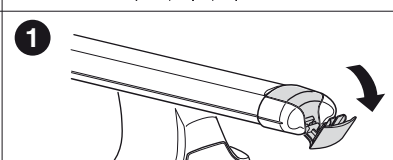
2



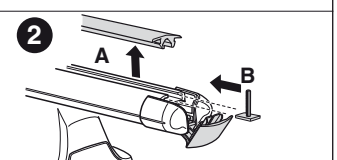
1



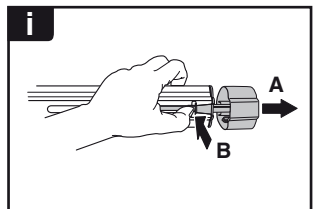
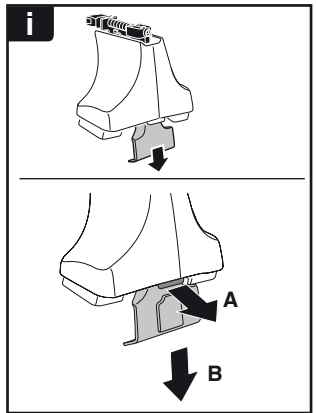
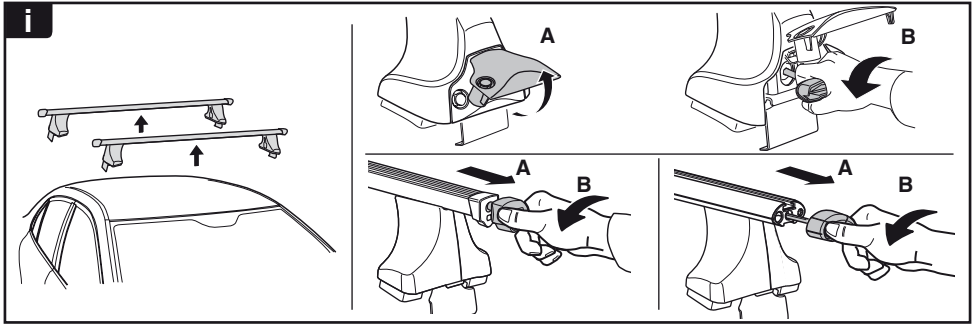
2



1



2



THULE
SWEDEN
**ONE
KEY
SYSTEM**



- 544 (x4)
- 596 (x6)
- 588 (x8)
- NA 510 (x10)
- EUR 452 (x12)
- ASIA



WW ▶ Thule Sweden AB, Box 69, 330 33 Hillerstorp, SWEDEN
NA ▶ Thule Inc., 42 Silvermine Road, Seymour, Connecticut 06483, USA

info@thule.com
customer.service@thule.com

www.thule.com