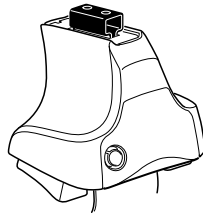
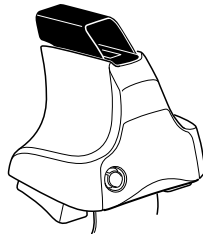
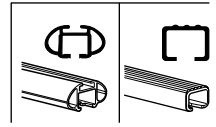


# Kit 1387

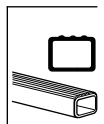
VOLVO S60, 4-dr Sedan, 01-09



**754** Rapid System  
**480R** Rapid Traverse (North America)



**480** Traverse (North America)

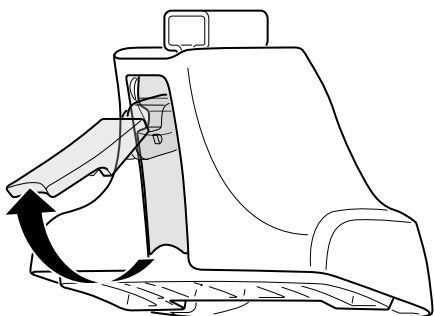


754 Rapid System  
480R Rapid Traverse (North America)

480 Traverse (North America)

(North America)

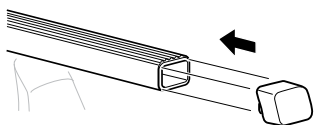
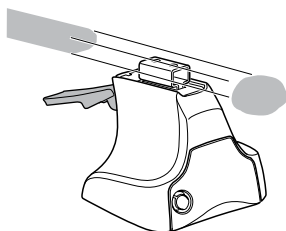
1



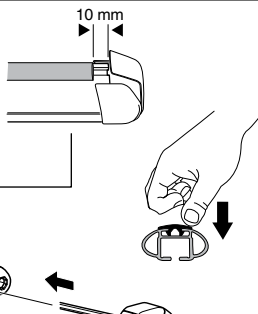
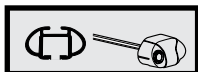
2



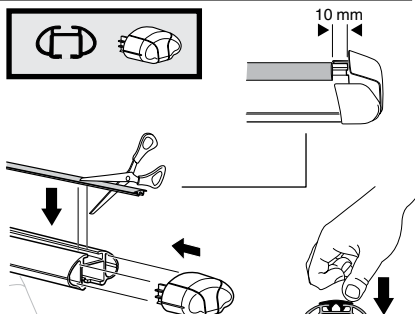
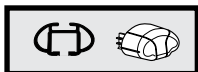
754 Rapid System  
480R Rapid Traverse  
(North America)



x4



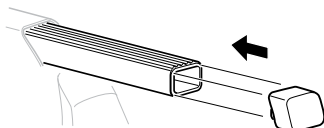
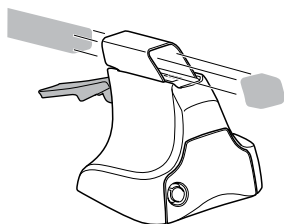
x4



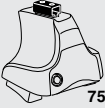
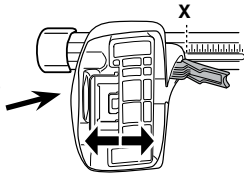
x4



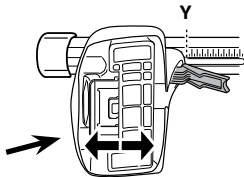
480 Traverse  
(North America)



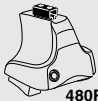
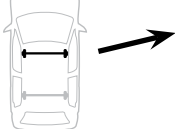
x4

**3****754** Rapid System

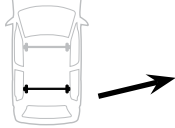
	<b>X</b>
<b>VOLVO S60, 4-dr Sedan, 01-09</b>	<b>39,5</b>



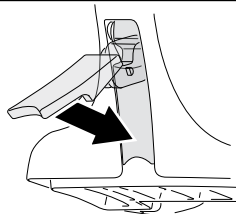
	<b>Y</b>
<b>VOLVO S60, 4-dr Sedan, 01-09</b>	<b>36,5</b>

**3****480R** Rapid Traverse**480** Traverse**(North America)**

	<b>X inch</b>	<b>X mm</b>
<b>VOLVO S60, 4-dr Sedan, 01-09</b>	<b>41 1/8"</b>	<b>1046 mm</b>

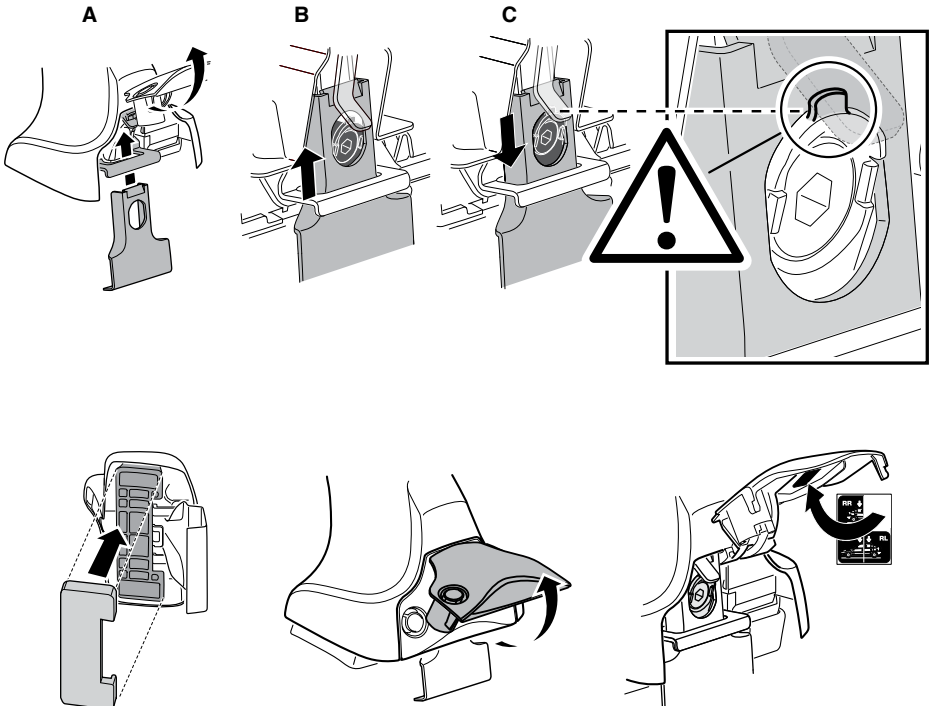
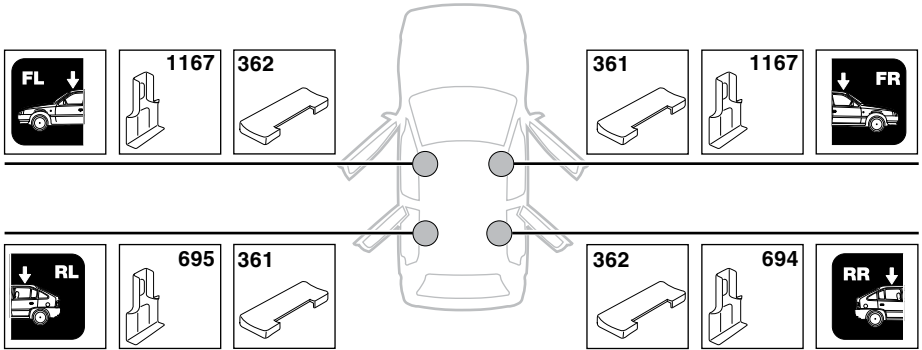


	<b>Y inch</b>	<b>Y mm</b>
<b>VOLVO S60, 4-dr Sedan, 01-09</b>	<b>39 5/8"</b>	<b>1016 mm</b>

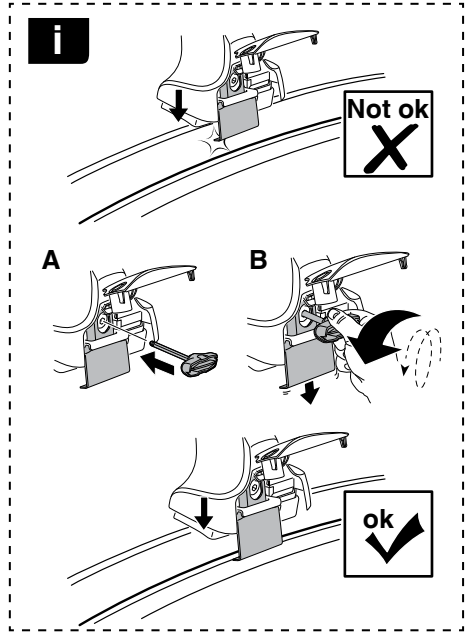
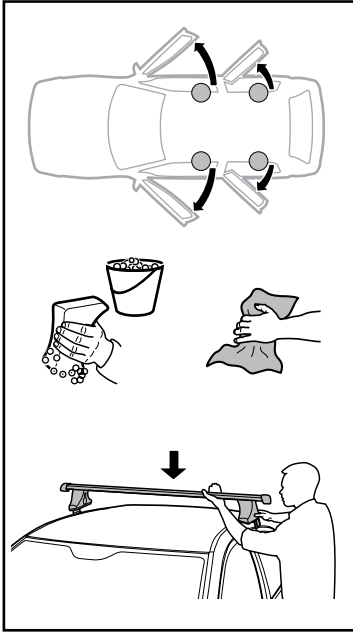
**4**

# 5

VOLVO S60, 4-dr Sedan, 01-09

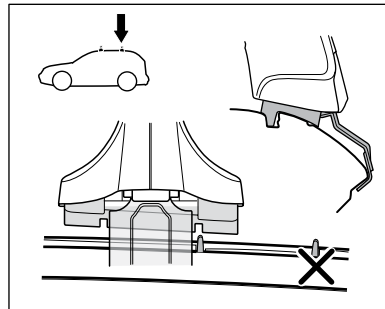
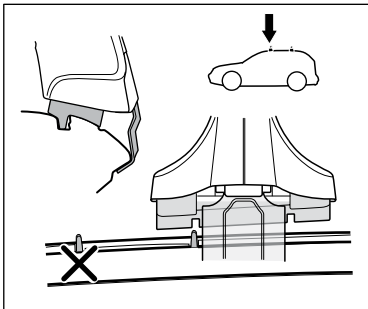
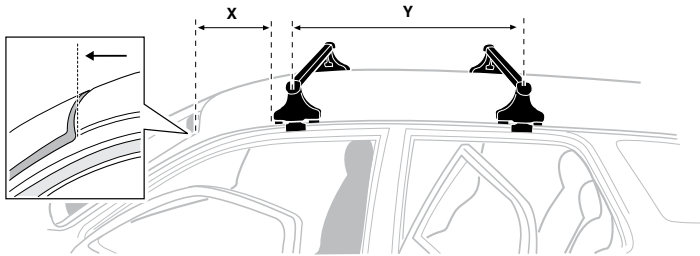


6

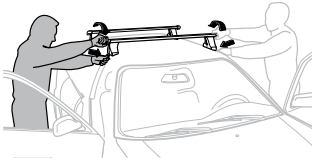


VOLVO S60, 4-dr Sedan, 01-09

X mm	Y mm	X inch	Y inch
245 mm	655 mm	9 5/8"	25 3/4"



7



**GB/US** Tighten alternately  
**D** Die Schrauben abwechselnd anziehen  
**F** Serrer alternativement chaque côté  
**NL** Afwisselend aan de linker- en de rechterkant aandraaien  
**I** Alternare il serraggio delle viti  
**E** Apertar alternativamente  
**PT** Aperte alternadamente  
**S** Dra åt växelvis  
**FIN** Kierrä vuorotellen  
**EST** Pinguldage vaheldumisi  
**LAT** Pielveiciet pamišus  
**LIT** Užsukinėkite pakaitomis  
**PL** Śruby dokręcaj naprzemiennie  
**RU** Затягивайте попеременно

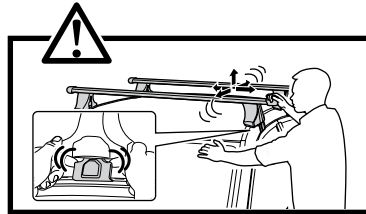
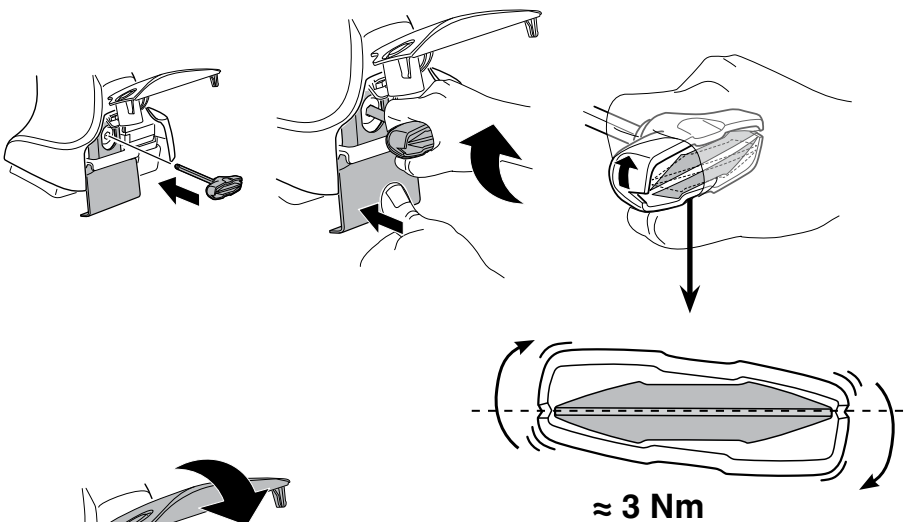
**CZ** Pokręťta bagażnika dokręcaj naprzemiennie.  
**SK** Dofahujte striedavo  
**SLO** Privijajte izmenično.  
**HR** Naizmjenočno zategnite  
**HU** Egymástól függetlenül szorítandó  
**GR** Σφιγίγτες εναλλάξ  
**TR** Dönüşümlü sıkın

**中文** 交替拧紧

**한국어** 번갈아 가며 조이십시오.

**日本語** 交互に締め付けてください。

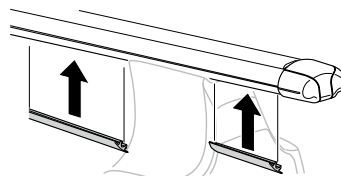
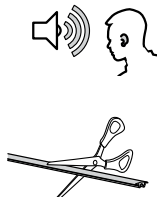
**ไทย** ชันในแบบสลับ

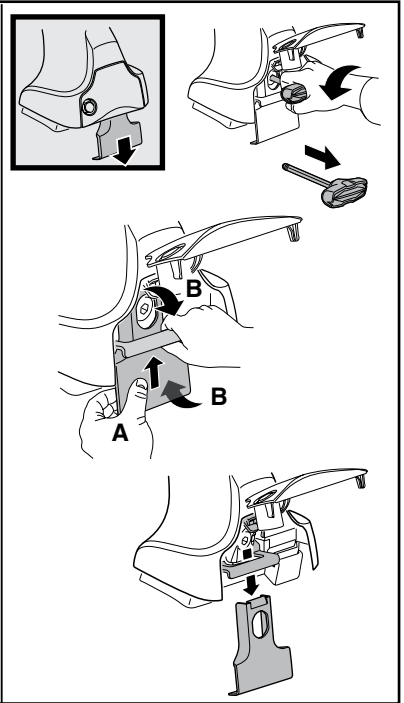
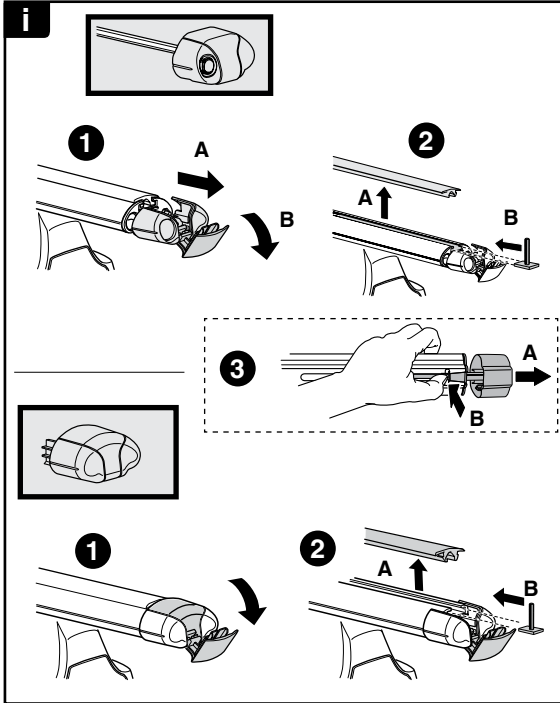
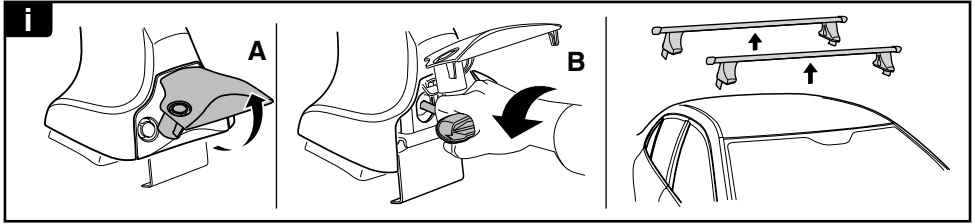


8

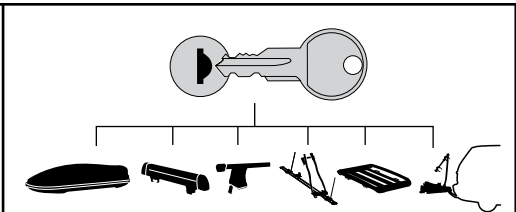


x1  
17 mm

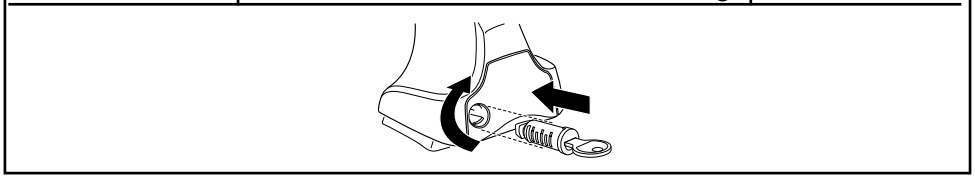




**THULE**  
SWEDEN  
**ONE  
KEY  
SYSTEM**



		(x4)
		(x6)
		(x8)
NA		(x10)
EUR		(x12)
ASIA		



WW ▶ Thule Sweden AB, Box 69, 330 33 Hillerstorp, SWEDEN  
NA ▶ Thule Inc., 42 Silvermine Road, Seymour, Connecticut 06483, USA

info@thule.com  
customer.service@thule.com

www.thule.com