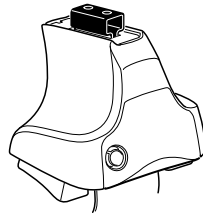
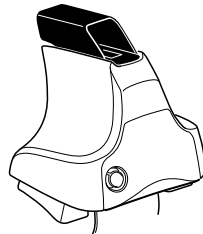
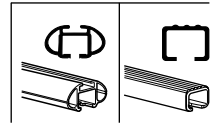


Kit 1333

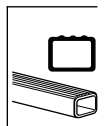
MITSUBISHI Grandis, 5-dr Estate, 03-11



754 Rapid System
480R Rapid Traverse (North America)



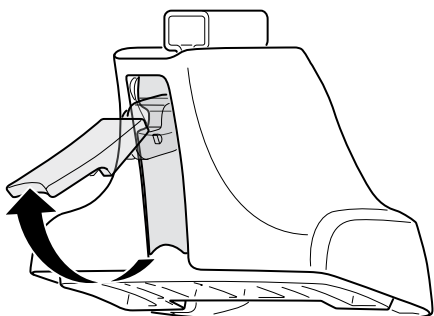
480 Traverse (North America)



- 2x [Bracket]
- 2x [Screw]
- 2x [Screw]
- 2x [Screw]
- 4x [Nuts]
- 4x [Washers]
- 1x [Screw]
- 2x [Screw]
- 2x [Screw]
- 2x [Screw]
- 2x [Screw]
- 2x [Bracket]

- 620 x 2
- 1188 x 2
- 43 x 2
- 147 x 2
- Directional sign (FR, FL, RL, RR) x 1

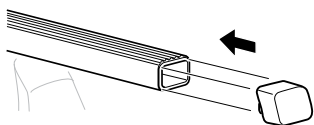
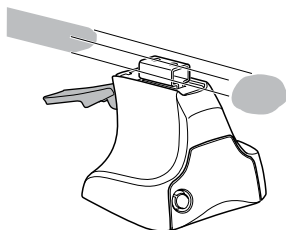
1



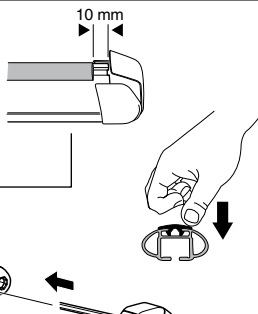
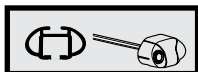
2



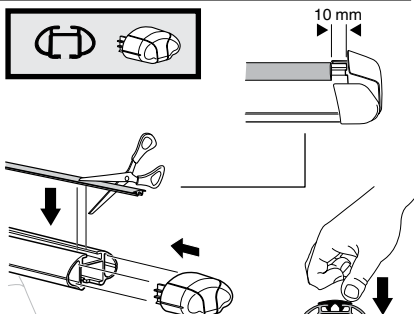
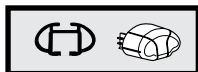
754 Rapid System
480R Rapid Traverse
(North America)



x4



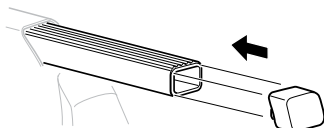
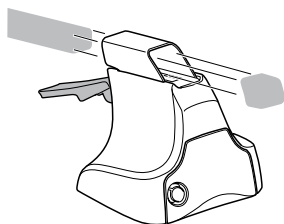
x4



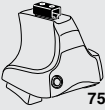
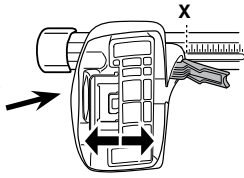
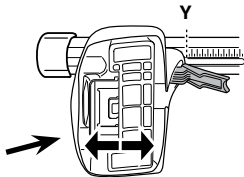
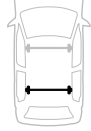
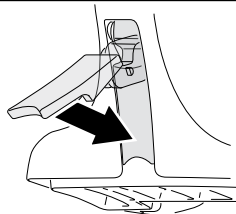
x4



480 Traverse
(North America)

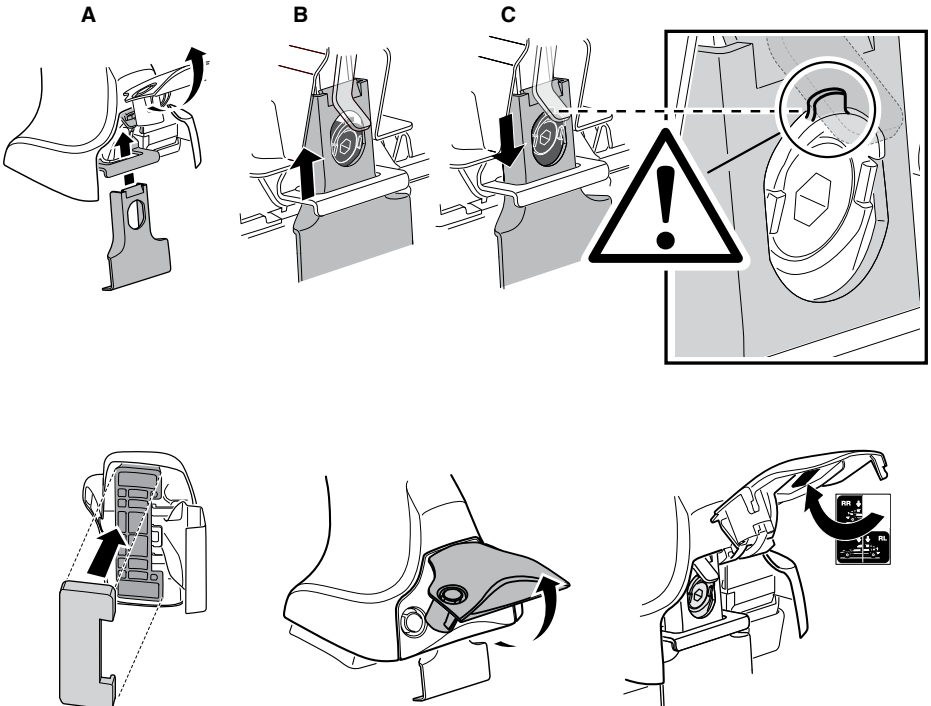
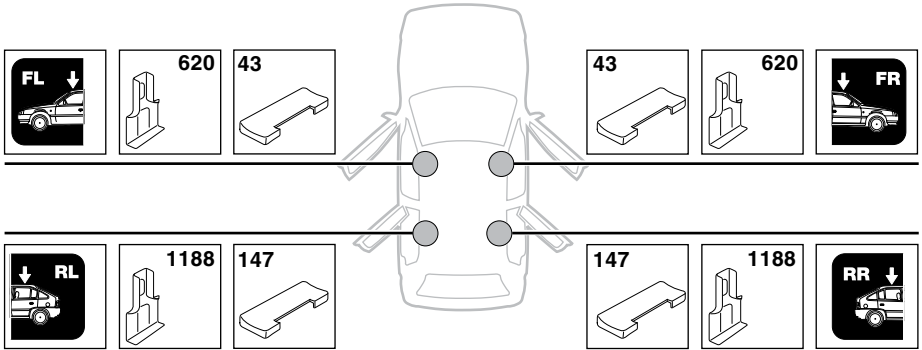


x4

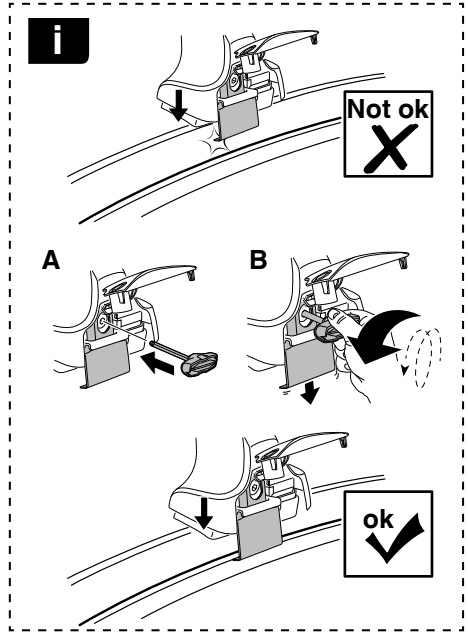
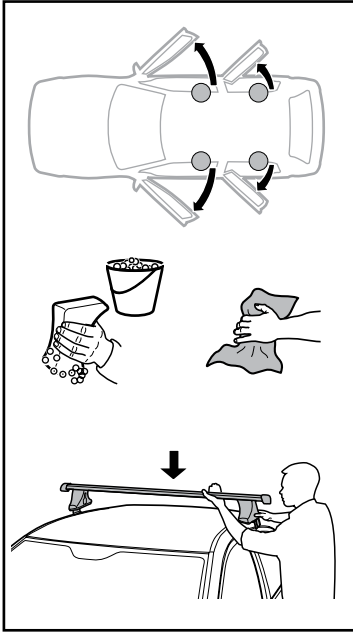
3**754** Rapid System**MITSUBISHI Grandis, 5-dr Estate, 03-11****X****44,5****MITSUBISHI Grandis, 5-dr Estate, 03-11****Y****42,5****3****480R** Rapid Traverse**480** Traverse**(North America)****X inch****X mm****MITSUBISHI Grandis, 5-dr Estate, 03-11****43 1/8"****1096mm****Y inch****Y mm****MITSUBISHI Grandis, 5-dr Estate, 03-11****42 3/8"****1076 mm****4**

5

MITSUBISHI Grandis, 5-dr Estate, 03-11

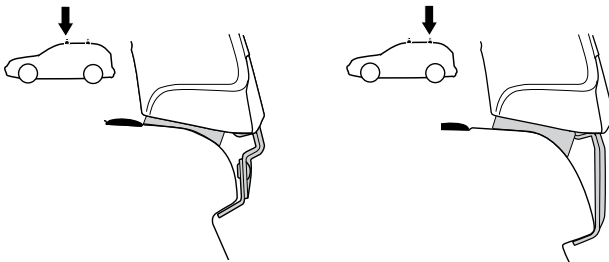
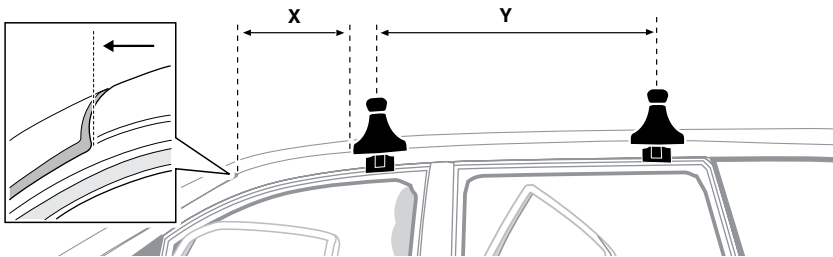


6

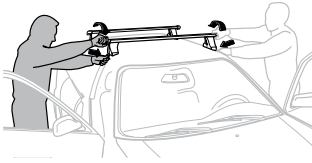


MITSUBISHI Grandis, 5-dr Estate, 03-11

X mm	Y mm	X inch	Y inch
460 mm	700 mm	18 1/8"	27 1/2"



7



GB/US	Tighten alternately
D	Die Schrauben abwechselnd anziehen
F	Serrer alternativement chaque côté
NL	Afwisselend aan de linker- en de rechterkant aandraaien
I	Alternare il serraggio delle viti
E	Apertar alternativamente
PT	Aperte alternadamente
S	Dra åt växelvis
FIN	Kierrä vuorotellen
EST	Pinguldage vaheldumisi
LAT	Pielveiciet pamišus
LIT	Užsukinėkite pakaitomis
PL	Śruby dokręcaj naprzemiennie
RU	Загрягивайте попеременно

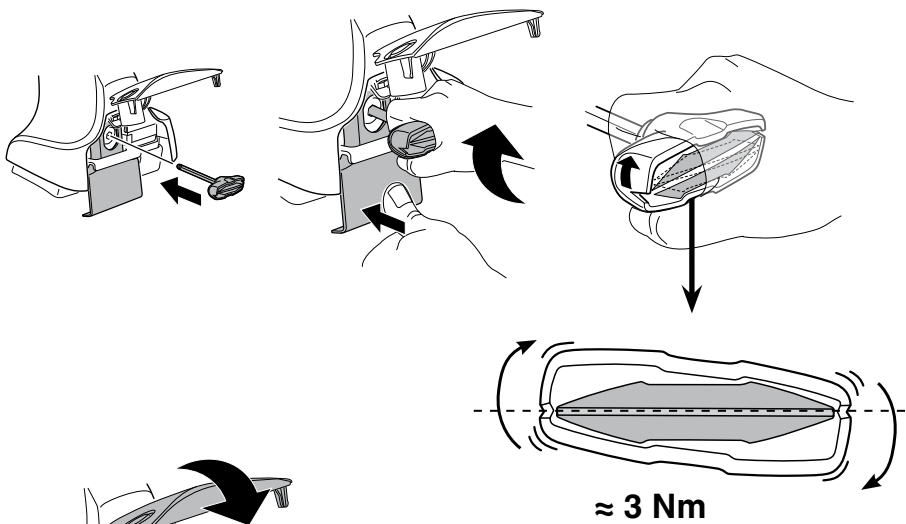
CZ	Pokręřta bagažníka dokręřcaj dokręřcaj naprzemiennie.
SK	Dofahajte striedavo
SLO	Privijajte izmenično.
HR	Naizmjenično zategnite
HU	Egymástól függetlenül szorítandó
GR	Σφιγίγεται εναλλάξ
TR	Dönüşümlü sıkın

中文 交替拧紧

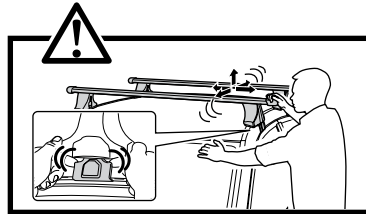
한국어 번갈아 가며 조이십시오.

日本語 交互に締め付けてください。

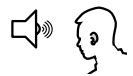
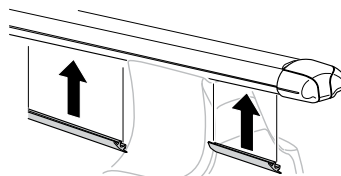
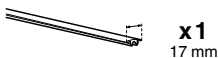
ไทย ชั้นในแบบสล๊็บ

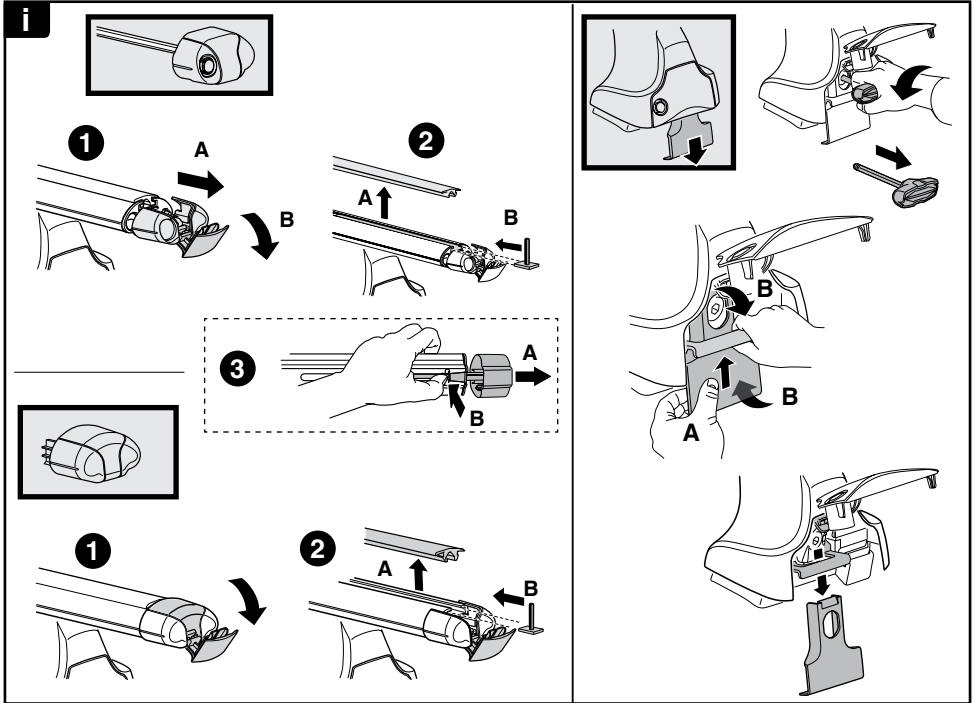
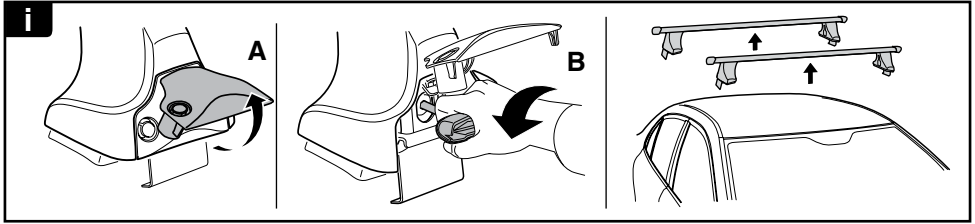


≈ 3 Nm

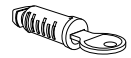
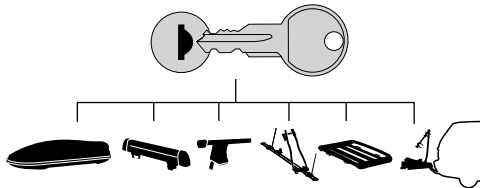


8

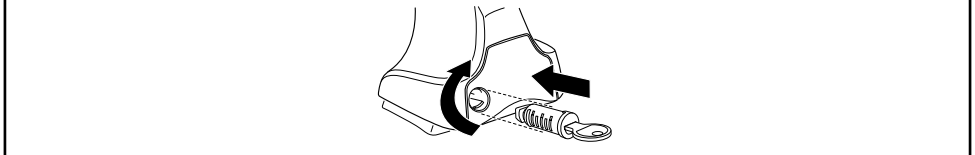




THULE
SWEDEN
**ONE
KEY
SYSTEM**



- 544** (x4)
- 596** (x6)
- 588** (x8)
- NA **510** (x10)
- EUR **452** (x12)
- ASIA



WW ▶ Thule Sweden AB, Box 69, 330 33 Hillerstorp, SWEDEN
NA ▶ Thule Inc., 42 Silvermine Road, Seymour, Connecticut 06483, USA

info@thule.com
customer.service@thule.com

www.thule.com

503-1333-02