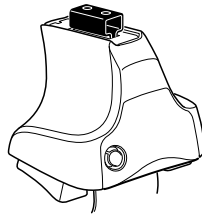


Kit 1308

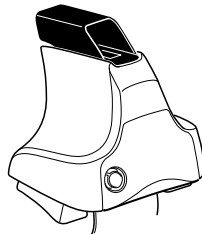
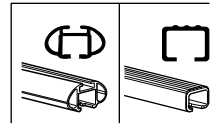
LEXUS ES 300, 4-dr Sedan, 02-06 / *02-03

LEXUS ES 330, 4-dr Sedan, *04-06

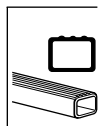
*North America



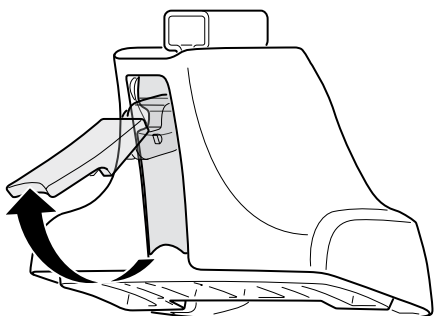
754 Rapid System
480R Rapid Traverse (North America)



480 Traverse (North America)



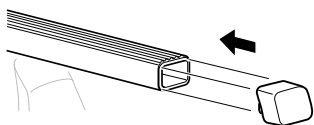
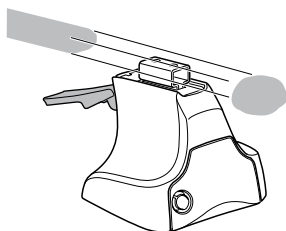
1



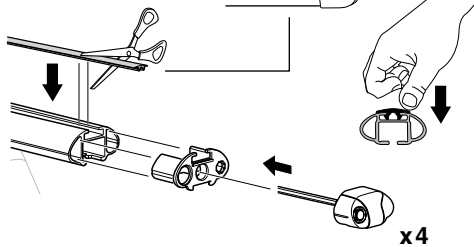
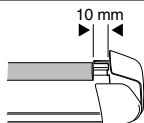
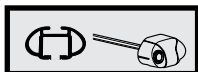
2



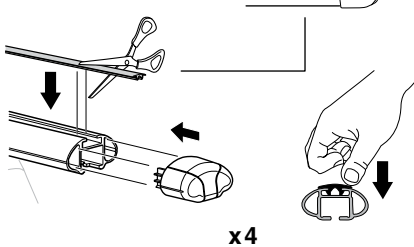
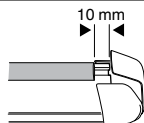
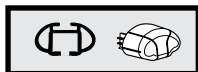
754 Rapid System
480R Rapid Traverse
(North America)



x4



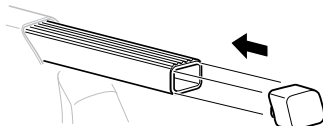
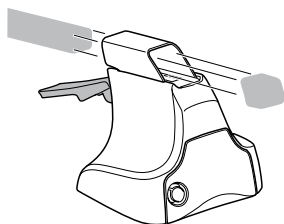
x4



x4

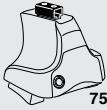


480 Traverse
(North America)

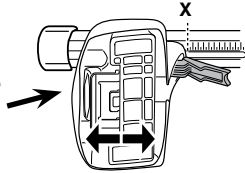


x4

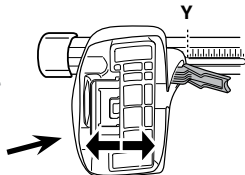
3



754 Rapid System



	X
LEXUS ES 300 , 4-dr Sedan, 02-06 / *02-03	35,5
LEXUS ES 330 , 4-dr Sedan, *04-06	35,5



	Y
LEXUS ES 300 , 4-dr Sedan, 02-06 / *02-03	36,5
LEXUS ES 330 , 4-dr Sedan, *04-06	36,5

3

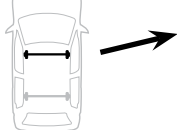


480R Rapid Traverse

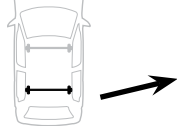


480 Traverse

(North America)

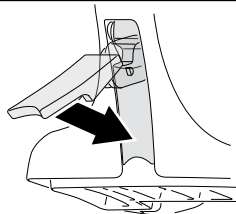


	X inch	X mm
LEXUS ES 300 , 4-dr Sedan, 02-06 / *02-03	39 ⁵/₈ "	1006 mm
LEXUS ES 330 , 4-dr Sedan, *04-06	39 ⁵/₈ "	1006 mm



	Y inch	Y mm
LEXUS ES 300 , 4-dr Sedan, 02-06 / *02-03	40 "	1016 mm
LEXUS ES 330 , 4-dr Sedan, *04-06	40 "	1016 mm

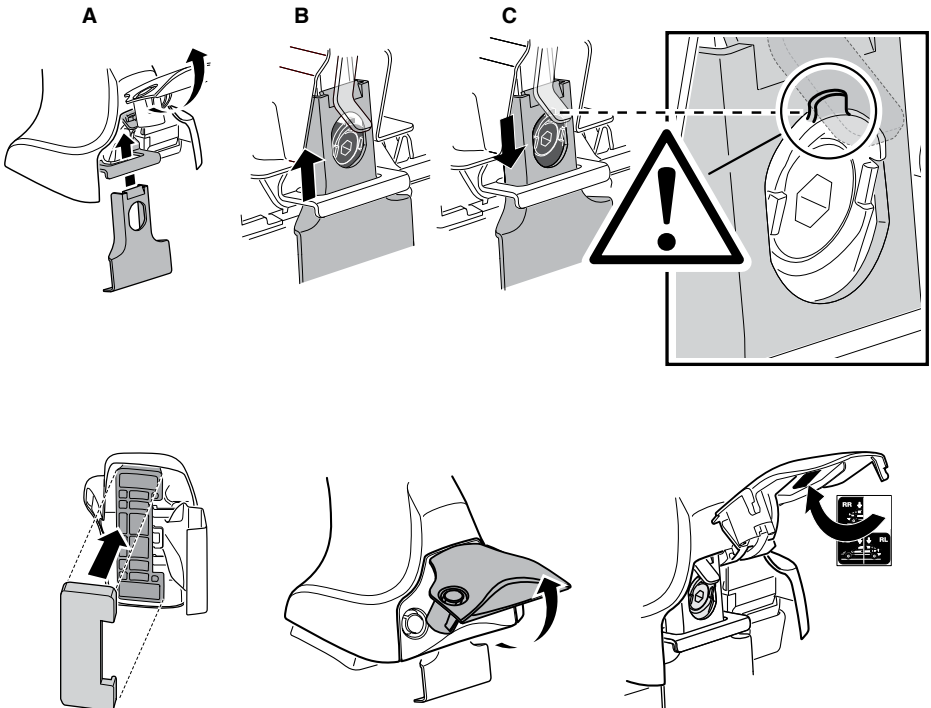
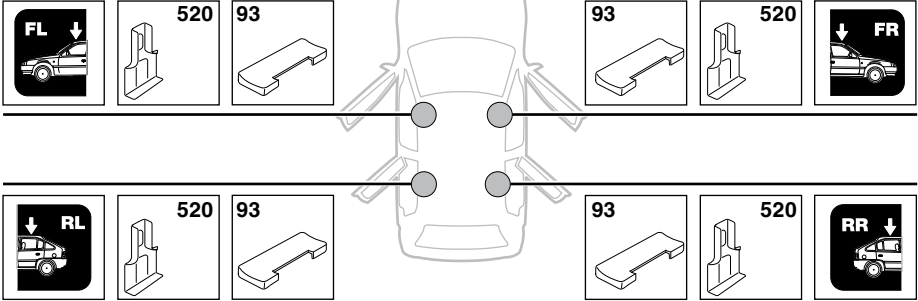
4



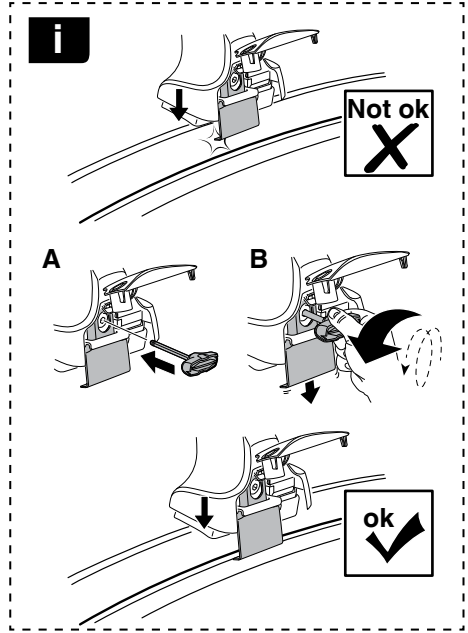
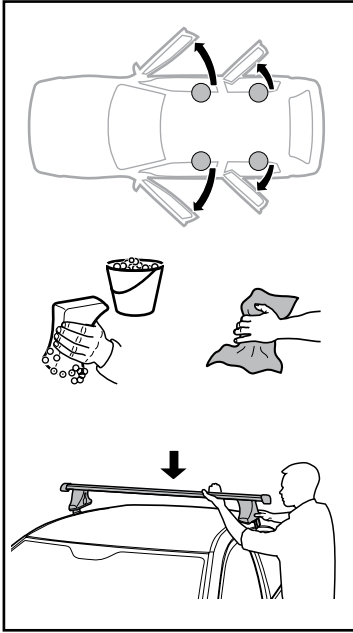
5

LEXUS ES 300, 4-dr Sedan, 02-06 / *02-03

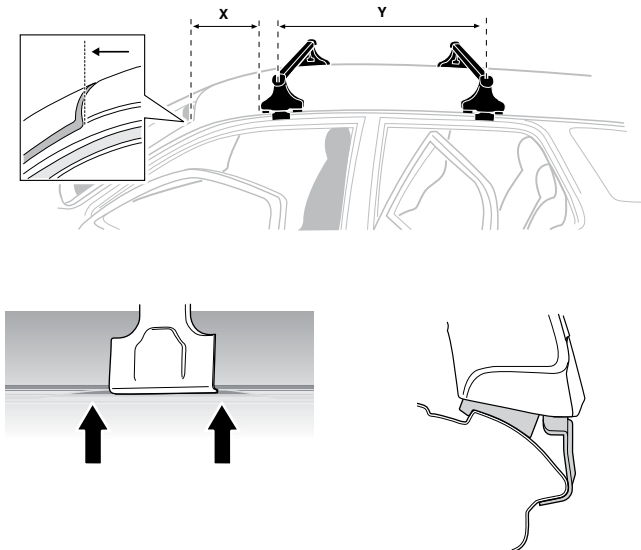
LEXUS ES 330, 4-dr Sedan, *04-06

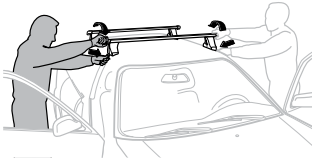


6



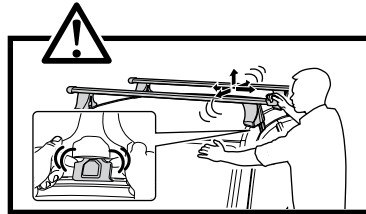
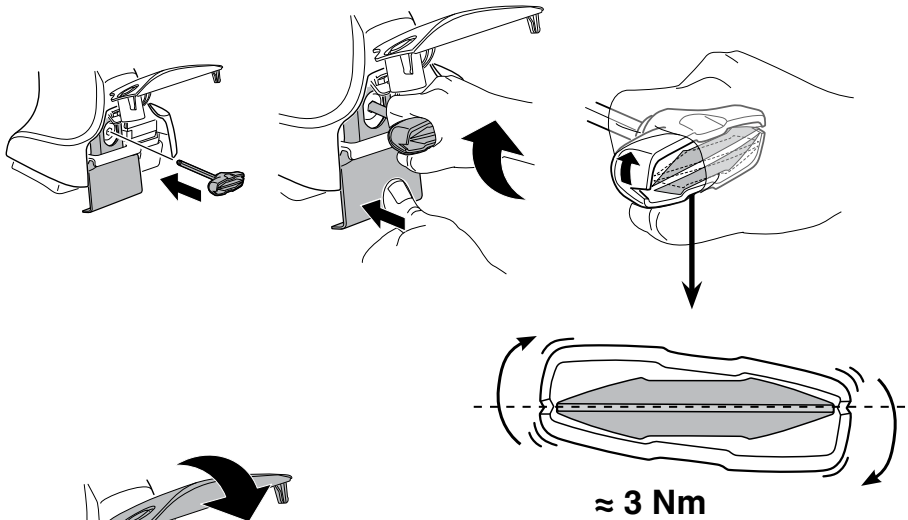
	X mm	Y mm	X inch	Y inch
LEXUS ES 300, 4-dr Sedan, 02-06 / *02-03	230 mm	670 mm	9 "	26 ³ / ₈ "
LEXUS ES 330, 4-dr Sedan, *04-06	230 mm	670 mm	9 "	26 ³ / ₈ "



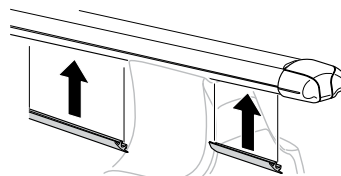
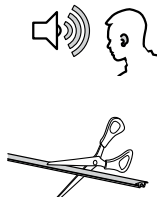
7

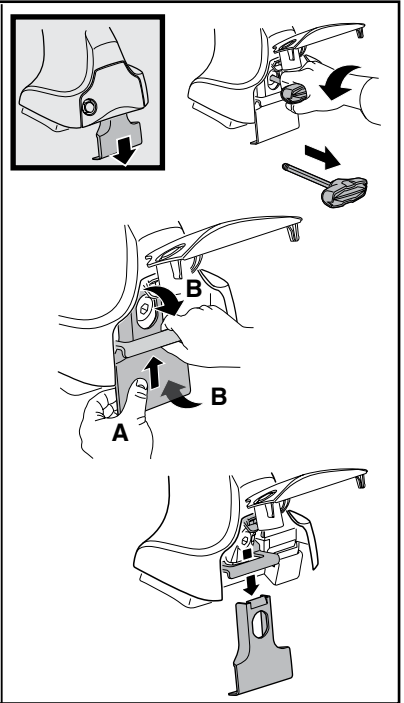
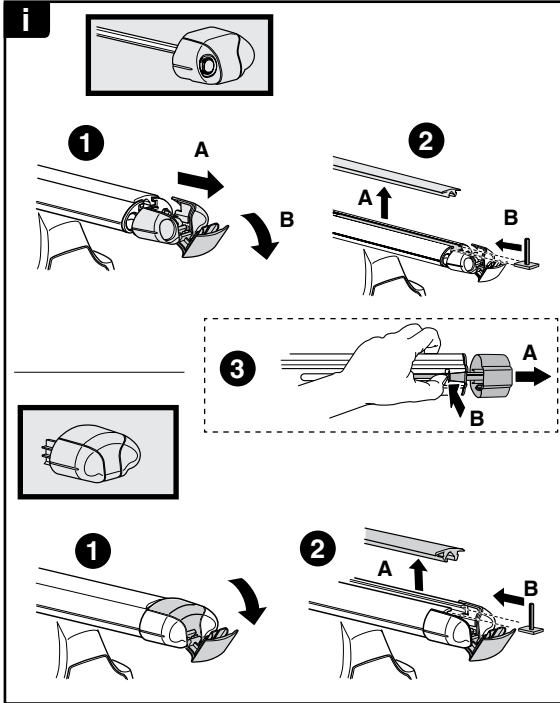
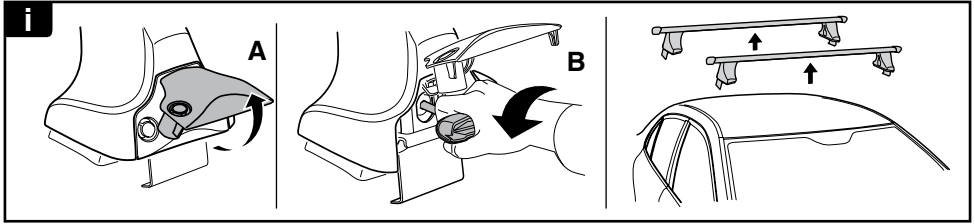
GB/US Tighten alternately
D Die Schrauben abwechselnd anziehen
F Serrer alternativement chaque côté
NL Afwisselend aan de linker- en de rechterkant aandraaien
I Alternare il serraggio delle viti
E Apertar alternativamente
PT Aperte alternadamente
S Dra åt växelvis
FIN Kierrä vuorotellen
EST Pinguldage vaheldumisi
LAT Pieļieciet pamišus
LIT Užsukinėkite pakaitomis
PL Śruby dokręcaj naprzemiennie
RU Затягивайте попеременно

CZ Pokręťta bagażnika dokręcaj naprzemiennie.
SK Dofahajte striedavo
SLO Privijajte izmenično.
HR Naizmjenočno zategnite
HU Egymástól függetlenül szorítandó
GR Σφιγίγτες εναλλάξ
TR Dönüşümlü sıkın
中文 交替拧紧
한국어 번갈아 가며 조이십시오.
日本語 交互に締め付けてください。
ไทย ชันในแบบสลับ

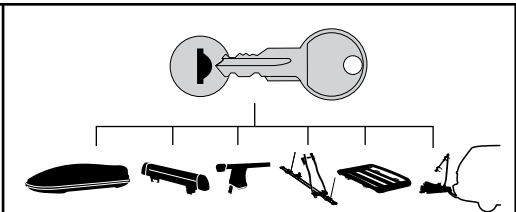
**8**

x1
17 mm

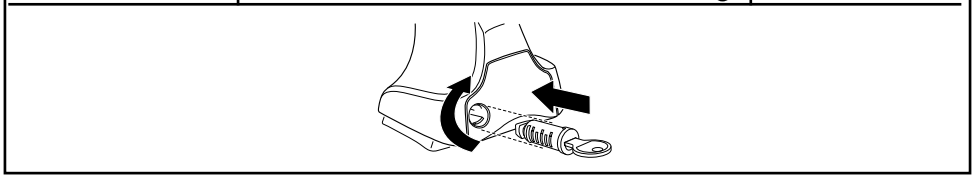




THULE
SWEDEN
**ONE
KEY
SYSTEM**



		(x4)
		(x6)
		(x8)
NA		(x10)
EUR		(x12)
ASIA		



WW ▶ Thule Sweden AB, Box 69, 330 33 Hillerstorp, SWEDEN
NA ▶ Thule Inc., 42 Silvermine Road, Seymour, Connecticut 06483, USA

info@thule.com
customer.service@thule.com

www.thule.com