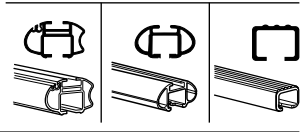
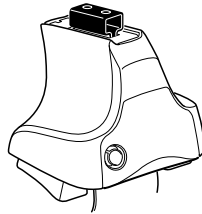


Kit 1274

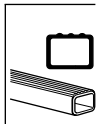
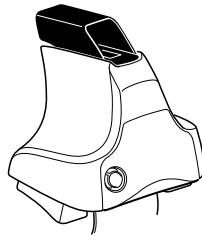
LAND ROVER Range Rover, 5-dr SUV, 02- / *03-

*North America

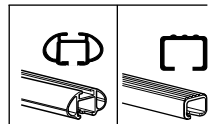
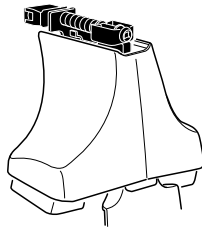
480R
754



480



750



THULE[®]
SWEDEN

ISO 11154-E

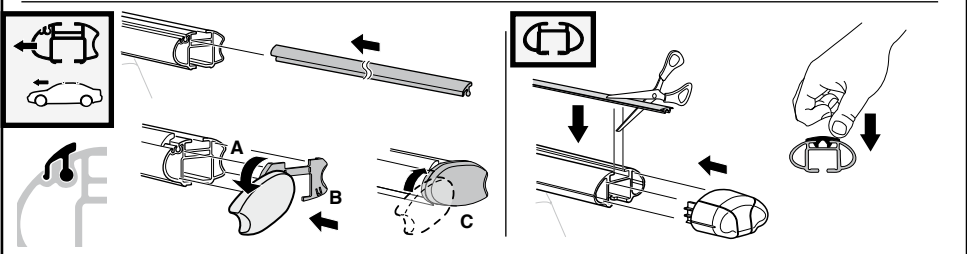
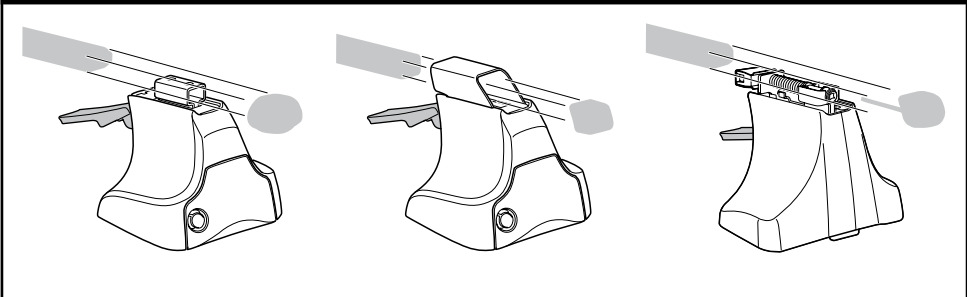
x2 x2 x2 x4	x2	x2 x2 x4 x4	x2 x2	x2

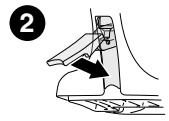
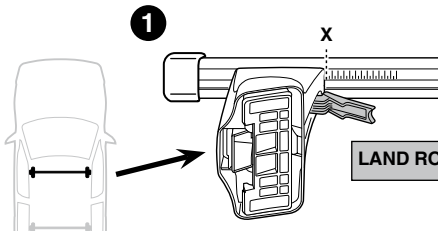
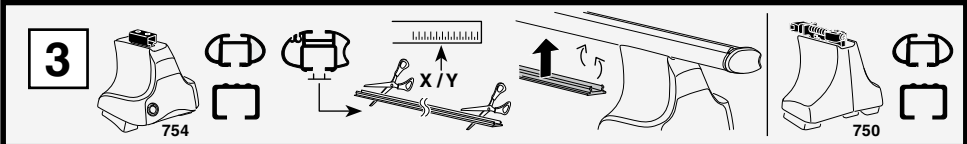
271 x 4

19 x 4

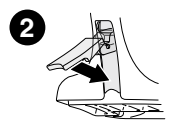
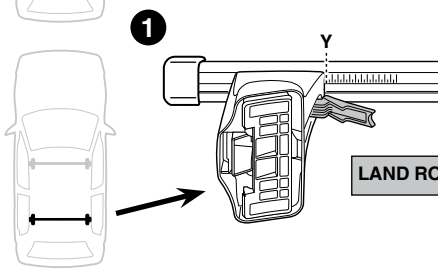
x 1

Kit

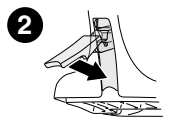
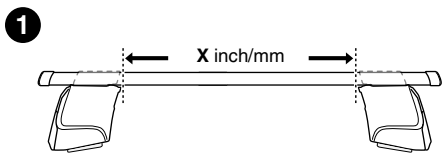
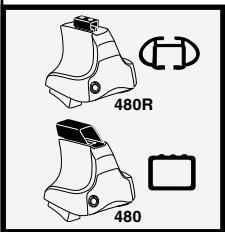




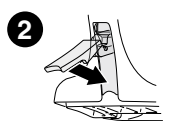
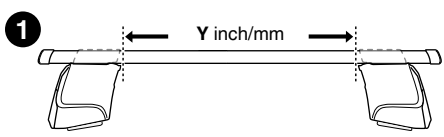
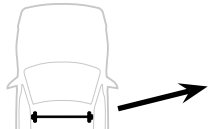
	X
LAND ROVER Range Rover, 5-dr SUV, 02-/*03-	56



	Y
LAND ROVER Range Rover, 5-dr SUV, 02-/*03-	55.5



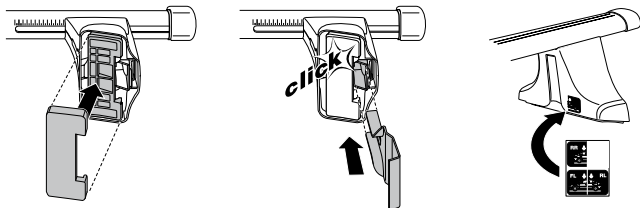
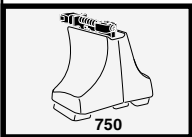
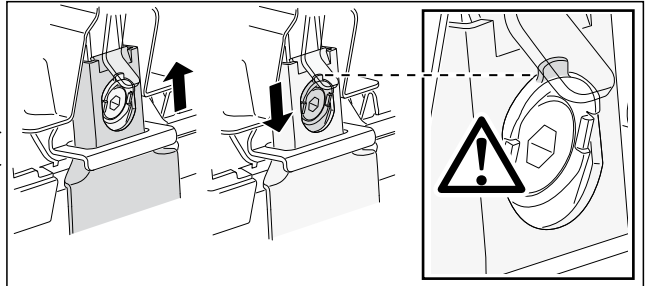
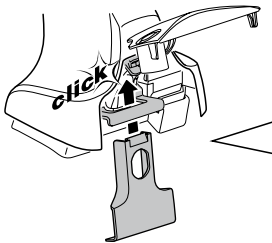
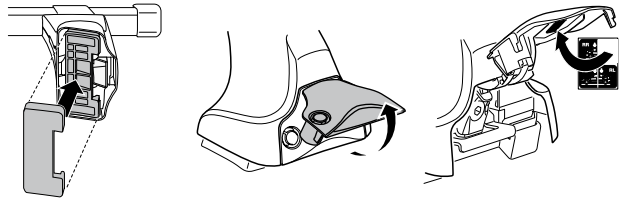
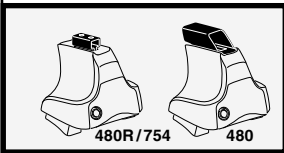
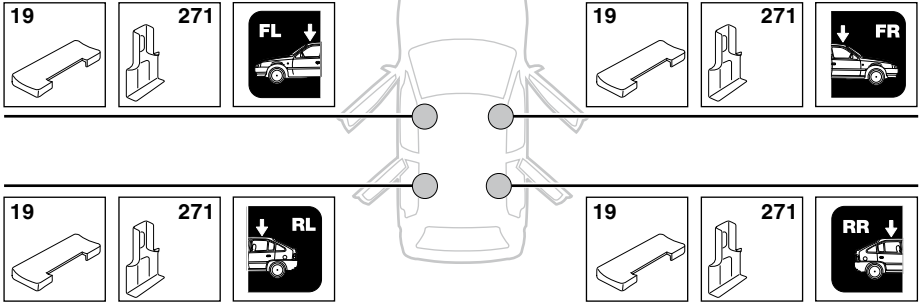
	X inch	X mm
LAND ROVER Range Rover, 5-dr SUV, 02-/*03-	47 5/8"	1211 mm



	Y inch	Y mm
LAND ROVER Range Rover, 5-dr SUV, 02-/*03-	47 1/2"	1206 mm

4

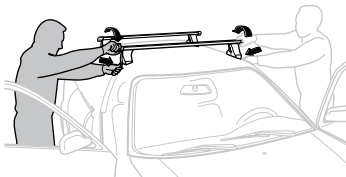
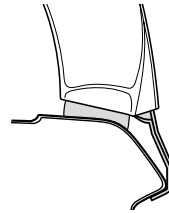
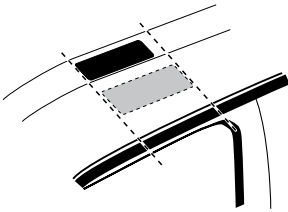
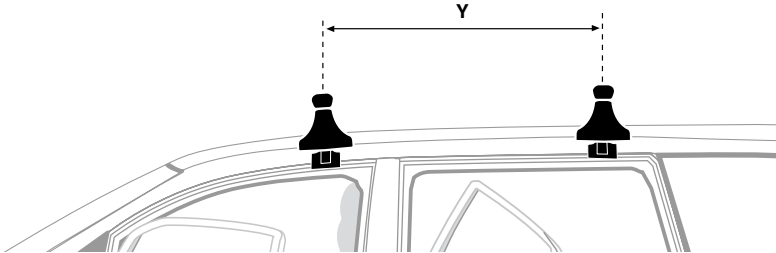
LAND ROVER Range Rover, 5-dr SUV, 02- / *03-



5



	Y mm	Y inch
LAND ROVER Range Rover, 5-dr SUV, 02- / *03-	720 mm	28 ³ / ₈ "



GB/US Tighten alternately

D Die Schrauben abwechselnd anziehen

F Serrer alternativement chaque côté

NL Afwisselend aan de linker- en de rechterkant aandraaien

I Alternare il serraggio delle viti

E Serrare alternativamente

PT Aperte alternadamente

S Dra åt växelvis

FIN Kierrä vuorotellen

EST Pinguldage vaheldumisi

LAT Pielieciet pamišus

LIT Užsukinėkite pakaitomis

PL Śruby dokręcaj naprzemiennie

RU Затягивайте попеременно

CZ Pokręťta bagażníka dokręcaj dokręcaj naprzemiennie.

SK Doťahujte striedavo

SLO Privijajte izmenično.

HR Naizmjenično zategnite

HU Egymástól függetlenül szorítandó

GR Σφιγγετε εναλλάξ

TR Dönüşümlü sıkın

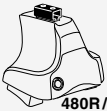
中文 交替拧紧

한국어 번갈아 가며 조이십시오.

日本語 交互に締め付けてください。

ไทย ชันโนแบบสลับ

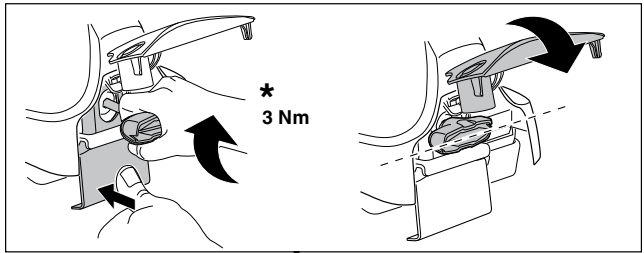
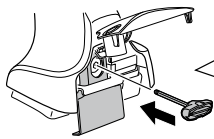
6



480R/754



480



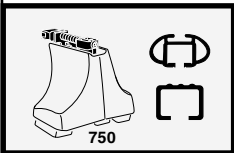
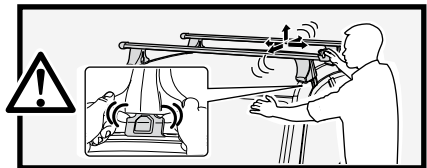
*
3 Nm



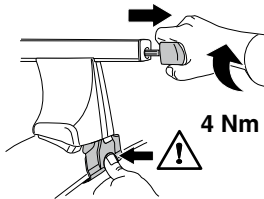
*



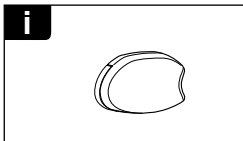
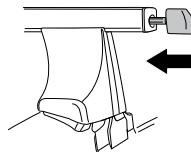
*
≈ 3 Nm



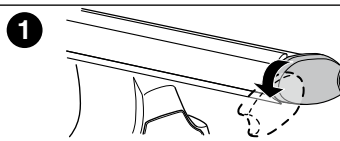
750



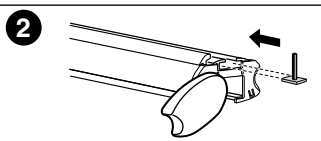
4 Nm



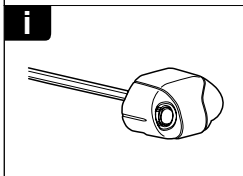
i



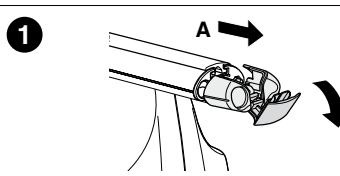
1



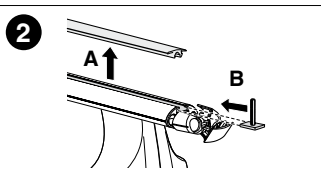
2



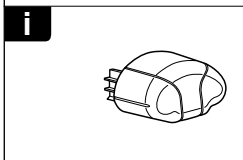
i



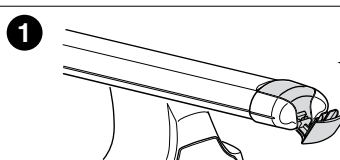
1



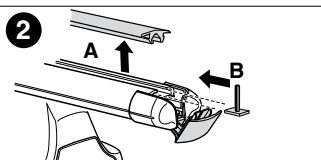
2



i



1



2



THULE
SWEDEN
**ONE
KEY
SYSTEM**



		544	(x4)
		596	(x6)
		588	(x8)
NA		510	(x10)
EUR		452	(x12)
ASIA			

