

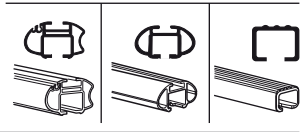
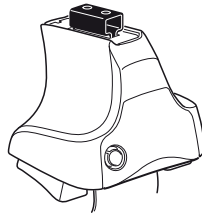
# Kit 1262

VOLKSWAGEN Polo (Mk.IV), 3-dr Hatchback, 02-04, 05-09

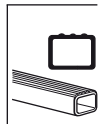
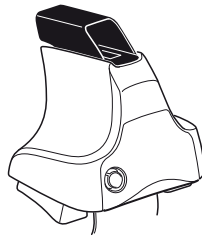
VOLKSWAGEN Polo (Mk.IV), 4-dr Sedan, 02-04, 05-09

VOLKSWAGEN Polo (Mk.IV), 5-dr Hatchback, 02-04, 05-09

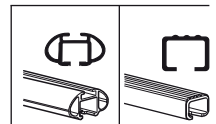
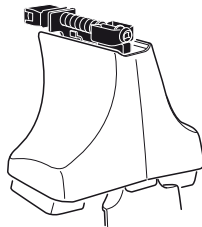
480R  
754



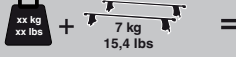
480



750



VOLKSWAGEN Polo (Mk.IV), 3-dr Hatchback,  
02-04, 05-09

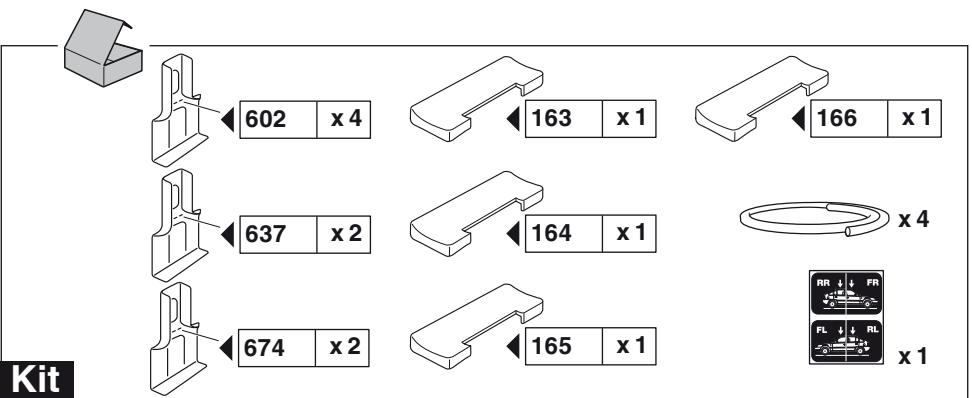
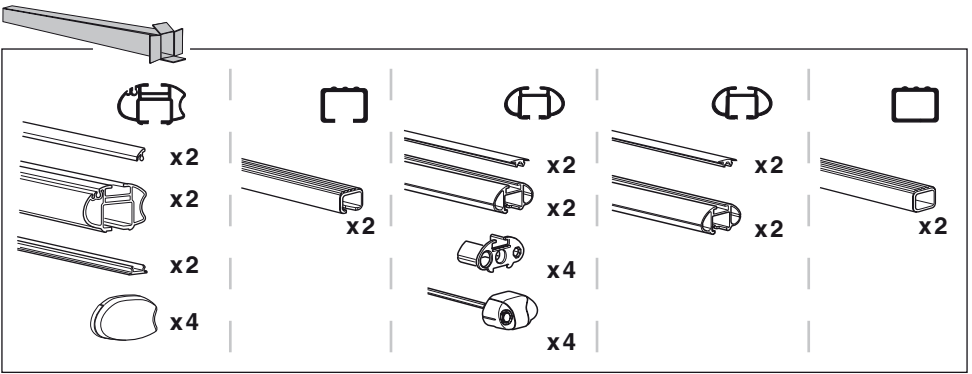
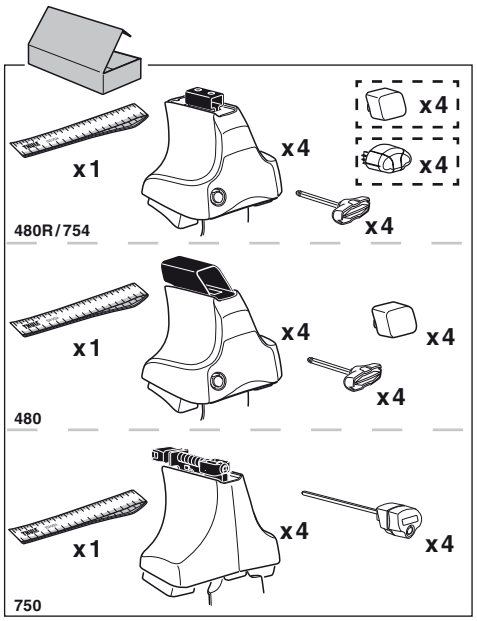
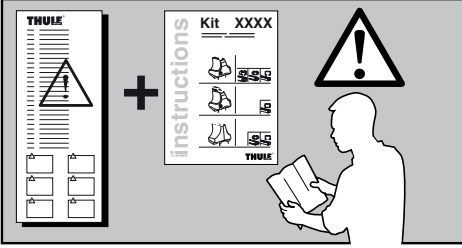
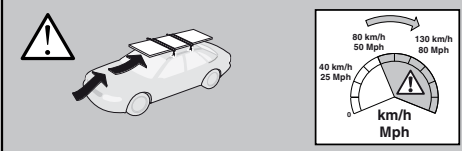


**Max.**  
**65kg/143 lbs**

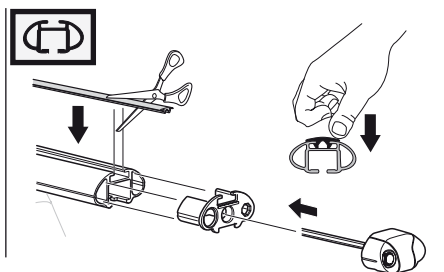
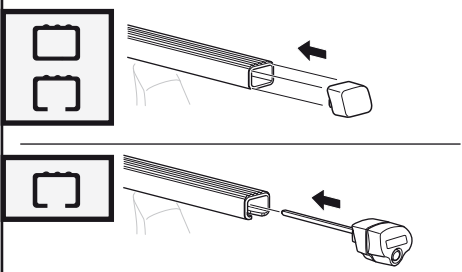
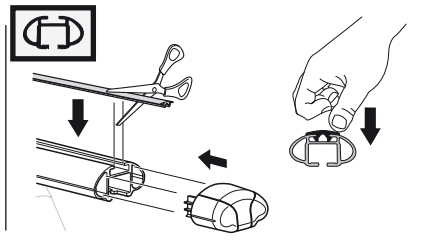
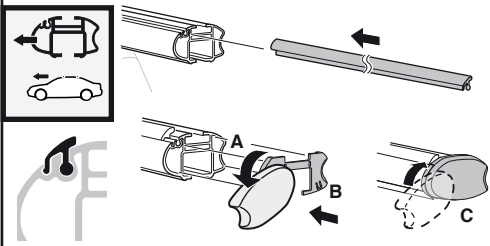
VOLKSWAGEN Polo (Mk.IV), 4-dr Sedan,  
02-04, 05-09

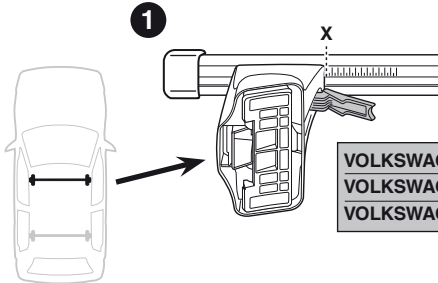
**Max.**  
**75kg/165 lbs**

VOLKSWAGEN Polo (Mk.IV), 5-dr Hatchback,  
02-04, 05-09

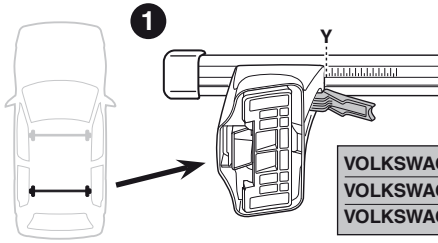


**Kit**

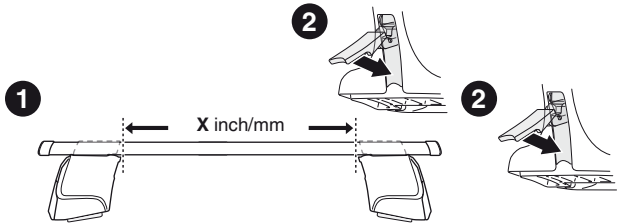
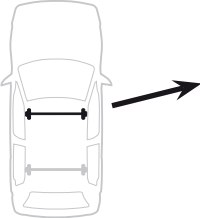
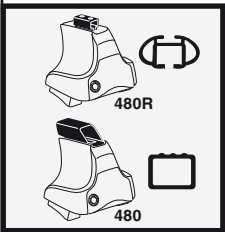




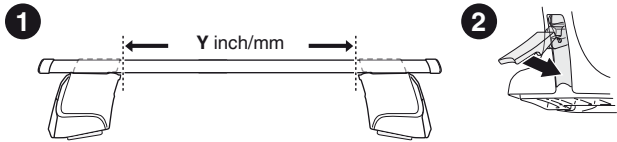
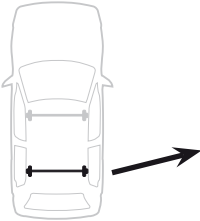
	X
VOLKSWAGEN Polo (Mk.IV), 3-dr Hatchback, 02-04, 05-09	30,5
VOLKSWAGEN Polo (Mk.IV), 4-dr Sedan, 02-04, 05-09	30
VOLKSWAGEN Polo (Mk.IV), 5-dr Hatchback, 02-04, 05-09	30,5



	Y
VOLKSWAGEN Polo (Mk.IV), 3-dr Hatchback, 02-04, 05-09	27
VOLKSWAGEN Polo (Mk.IV), 4-dr Sedan, 02-04, 05-09	28
VOLKSWAGEN Polo (Mk.IV), 5-dr Hatchback, 02-04, 05-09	27



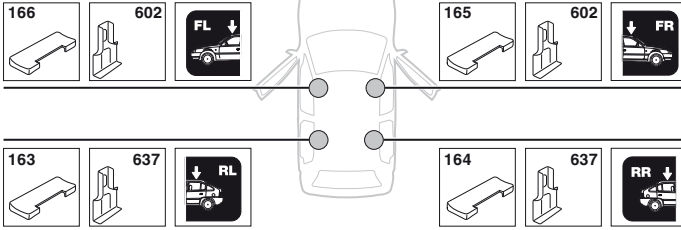
	X inch	X mm
VOLKSWAGEN Polo (Mk.IV), 3-dr Hatchback, 02-04, 05-09	37 <sup>5</sup> / <sub>8</sub> "	956 mm
VOLKSWAGEN Polo (Mk.IV), 4-dr Sedan, 02-04, 05-09	37 <sup>1</sup> / <sub>2</sub> "	951 mm
VOLKSWAGEN Polo (Mk.IV), 5-dr Hatchback, 02-04, 05-09	37 <sup>5</sup> / <sub>8</sub> "	956 mm



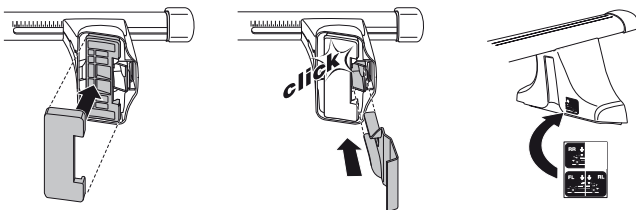
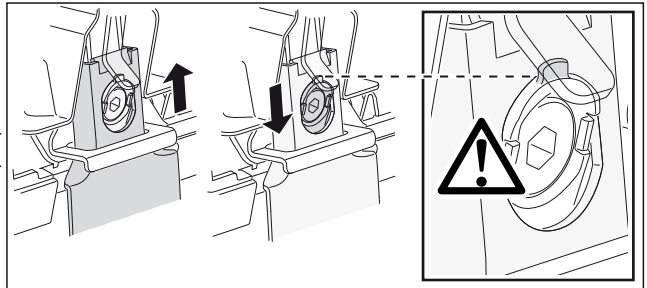
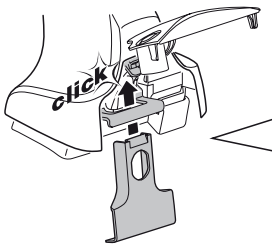
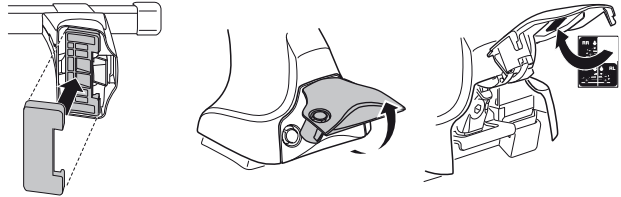
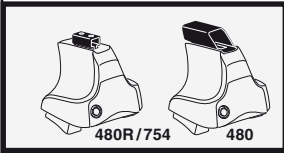
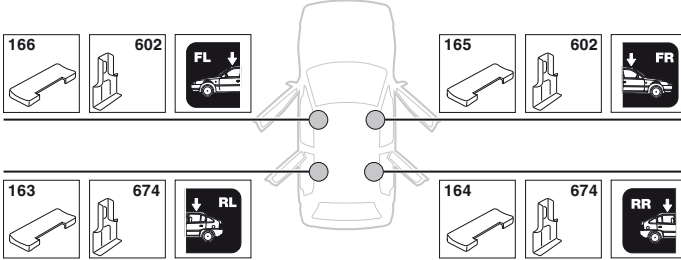
	Y inch	Y mm
VOLKSWAGEN Polo (Mk.IV), 3-dr Hatchback, 02-04, 05-09	36 <sup>1</sup> / <sub>4</sub> "	921 mm
VOLKSWAGEN Polo (Mk.IV), 4-dr Sedan, 02-04, 05-09	36 <sup>5</sup> / <sub>8</sub> "	931 mm
VOLKSWAGEN Polo (Mk.IV), 5-dr Hatchback, 02-04, 05-09	36 <sup>1</sup> / <sub>4</sub> "	921 mm

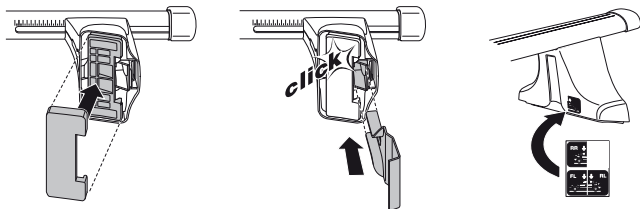
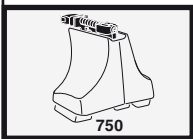
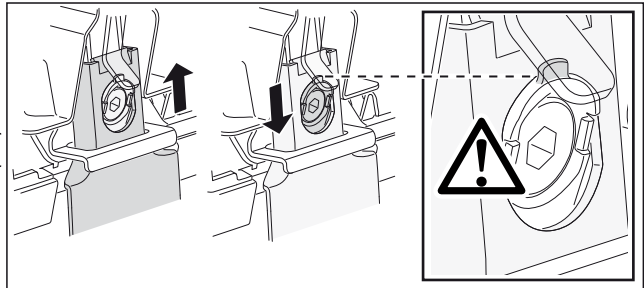
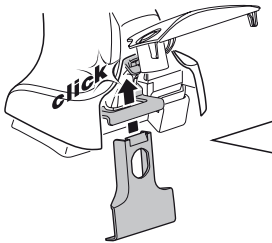
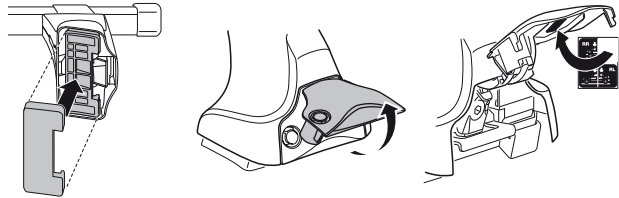
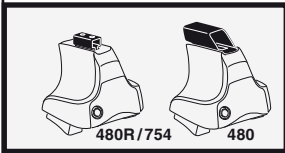
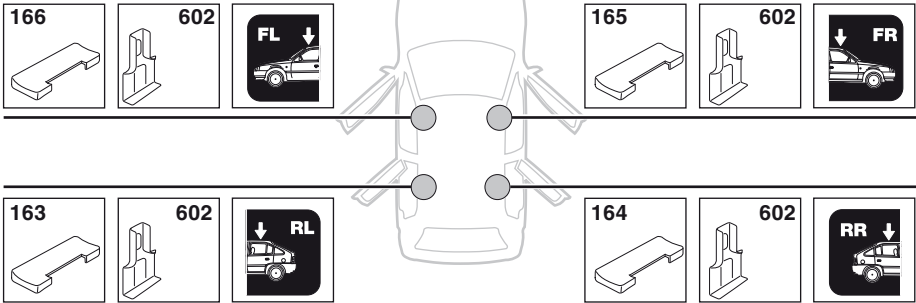
4

VOLKSWAGEN Polo (Mk.IV), 3-dr Hatchback, 02-04, 05-09

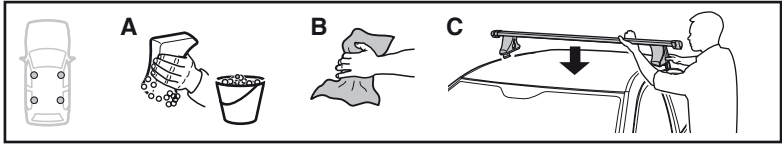


VOLKSWAGEN Polo (Mk.IV), 4-dr Sedan, 02-04, 05-09



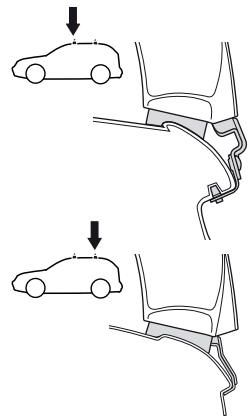
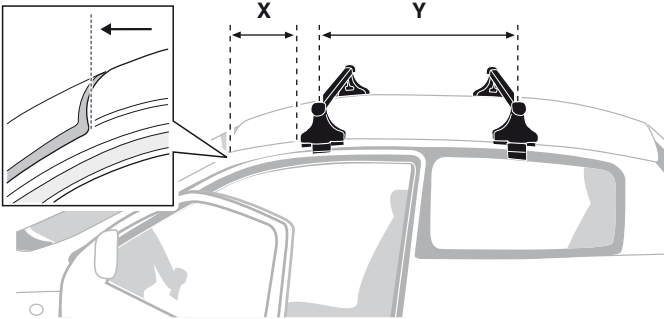
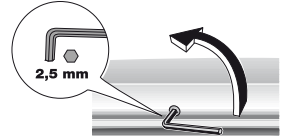
**4****VOLKSWAGEN Polo (Mk.IV), 5-dr Hatchback, 02-04, 05-09**

5

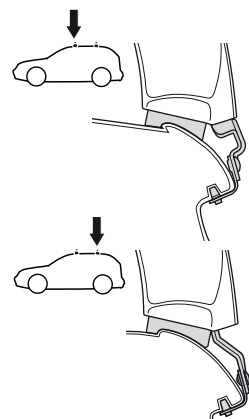
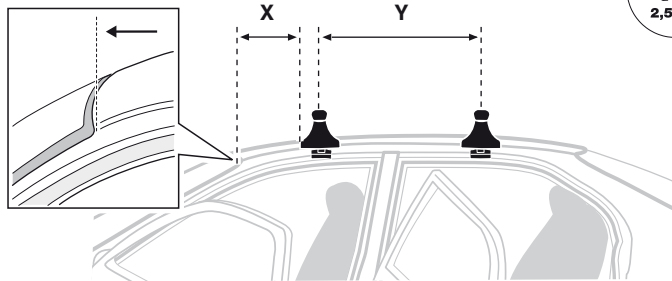
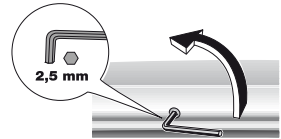


	X mm	Y mm	X inch	Y inch
VOLKSWAGEN Polo (Mk.IV), 3-dr Hatchback, 02-04, 05-09	250 mm	755 mm	9 <sup>7</sup> / <sub>8</sub> "	29 <sup>3</sup> / <sub>4</sub> "
VOLKSWAGEN Polo (Mk.IV), 4-dr Sedan, 02-04, 05-09	245 mm	790 mm	9 <sup>5</sup> / <sub>8</sub> "	31 <sup>1</sup> / <sub>8</sub> "

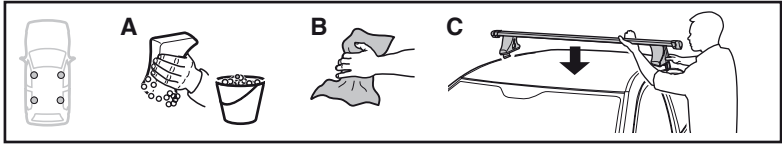
VOLKSWAGEN Polo (Mk.IV), 3-dr Hatchback, 02-04, 05-09



VOLKSWAGEN Polo (Mk.IV), 4-dr Sedan, 02-04, 05-09

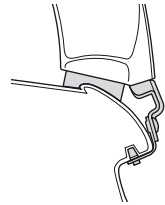
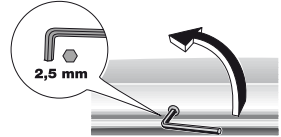
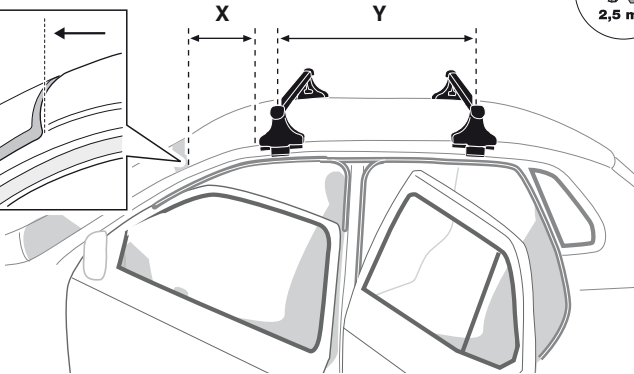
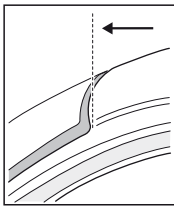


**5**

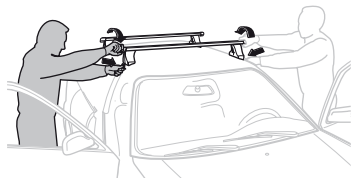


	X mm	Y mm	X inch	Y inch
<b>VOLKSWAGEN Polo (Mk.IV), 5-dr Hatchback, 02-04, 05-09</b>	<b>245 mm</b>	<b>780 mm</b>	<b>9 <sup>5</sup>/<sub>8</sub> "</b>	<b>30 <sup>3</sup>/<sub>4</sub> "</b>

**VOLKSWAGEN Polo (Mk.IV), 5-dr Hatchback, 02-04, 05-09**





**6****GB/US** Tighten alternately**D** Die Schrauben abwechselnd anziehen**F** Serrer alternativement chaque côté**NL** Afwisselend aan de linker- en de rechterkant aandraaien**I** Alternare il serraggio delle viti**E** Apretar alternativamente**PT** Aperte alternadamente**S** Dra åt växelvis**FIN** Kierrä vuorotellen**EST** Pinguldage vaheldumisi**LAT** Pielvelciēt pamišus**LIT** Užsukinėkite pakaitomis**PL** Śruby dokręcaj naprzemiennie**RU** Затягивайте попеременно**CZ** Pokręťte багаžníka dokręcaj dokręcaj naprzemiennie.**SK** Dofahujte striedavo**SLO** Privijajte izmenično.**HR** Naizmjenično zategnite**HU** Egymástól függetlenül szorítandó**GR** Σφίγγετε εναλλάξ**TR** Dönüşümlü sıkın**中文** 交替拧紧**한국어** 번갈아 가며 조이십시오.**日本語** 交互に締め付けてください。**ไทย** ชันในแบบสลับ**VOLKSWAGEN Polo (Mk.IV),**

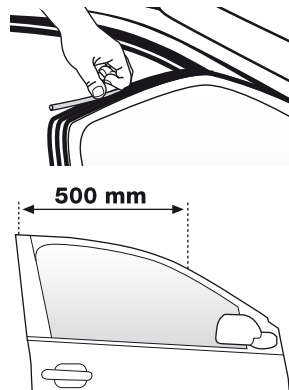
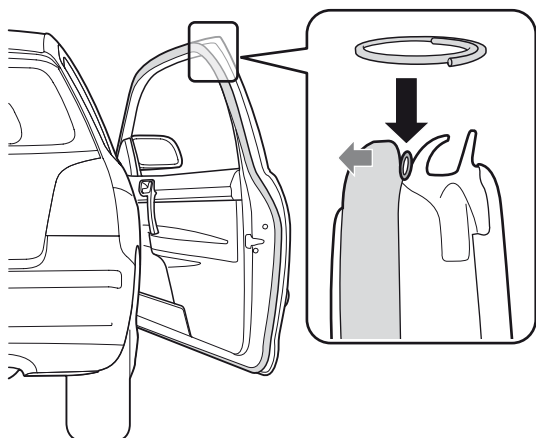
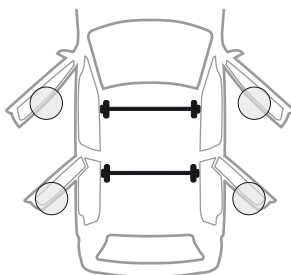
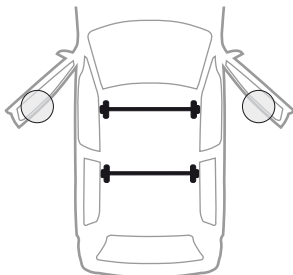
3-dr Hatchback, 02-04, 05-09

**VOLKSWAGEN Polo (Mk.IV),**

4-dr Sedan, 02-04, 05-09

**VOLKSWAGEN Polo (Mk.IV),**

5-dr Hatchback, 02-04, 05-09



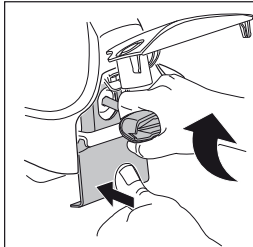
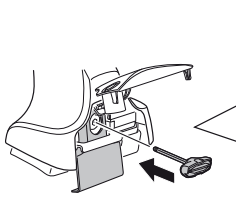
7



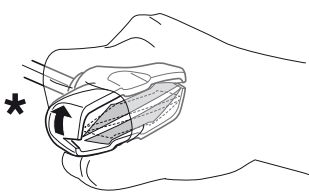
480R/754



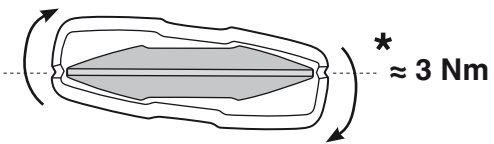
480



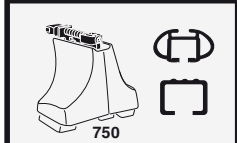
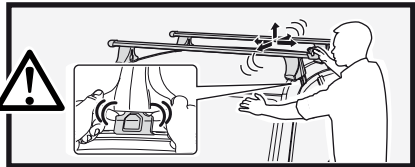
\*  
3 Nm



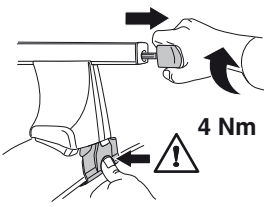
\*



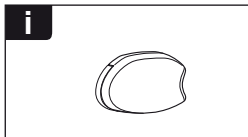
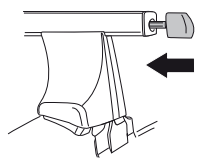
\*  
≈ 3 Nm



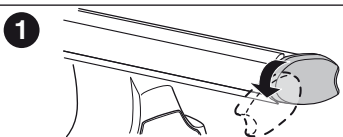
750



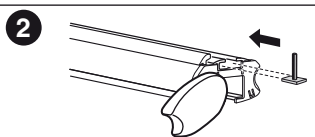
4 Nm



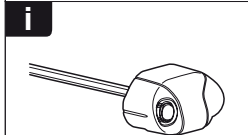
i



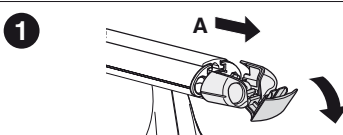
1



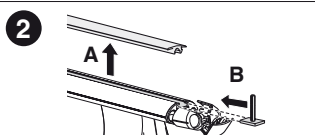
2



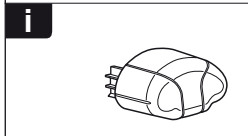
i



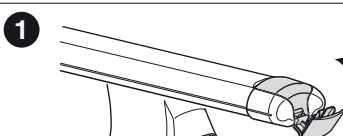
1



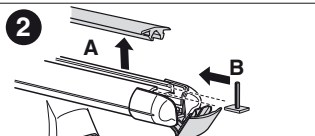
2



i

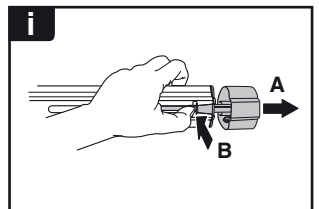
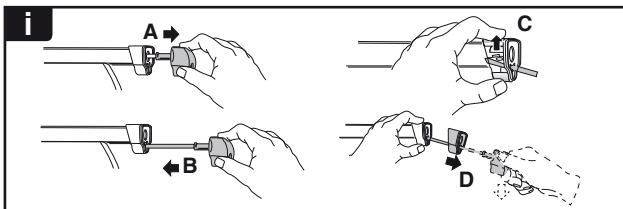
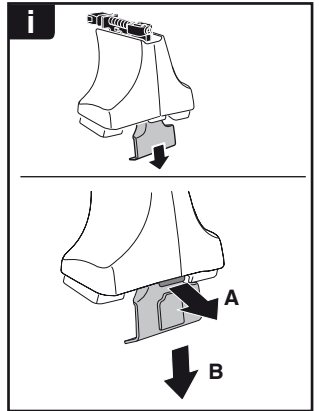
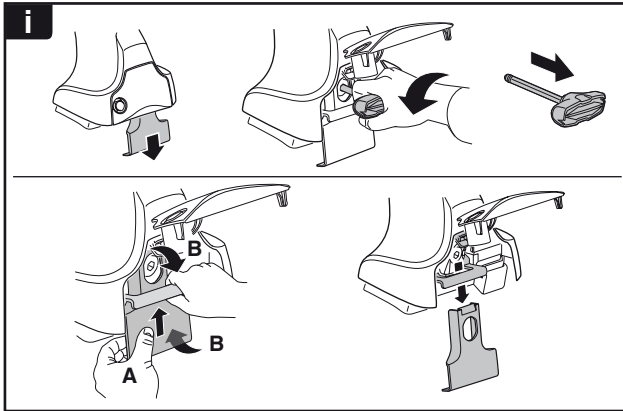
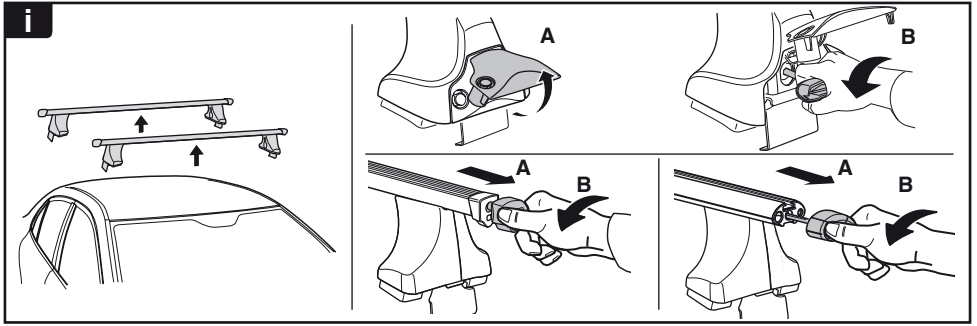


1

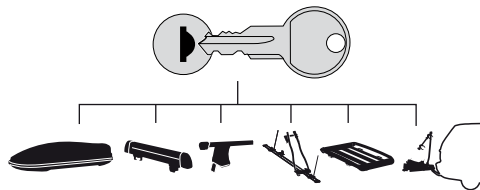


2

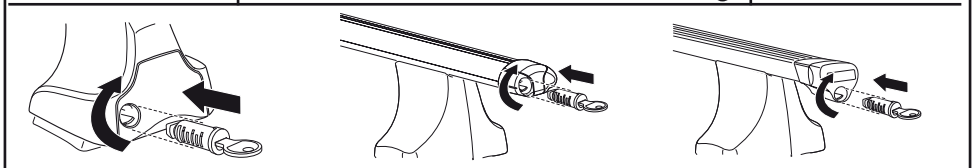




**THULE**  
SWEDEN  
**ONE  
KEY  
SYSTEM**



- 544 (x4)
- 596 (x6)
- 588 (x8)
- NA 510 (x10)
- EUR 452 (x12)
- ASIA



WW ▶ Thule Sweden AB, Box 69, 330 33 Hillerstorp, SWEDEN  
NA ▶ Thule Inc., 42 Silvermine Road, Seymour, Connecticut 06483, USA

info@thule.com  
customer.service@thule.com

www.thule.com

503-1262-03