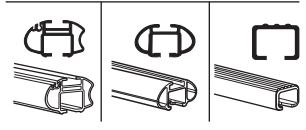
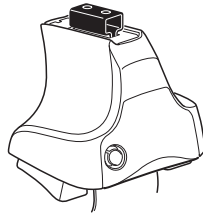


Kit 1181

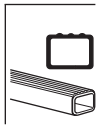
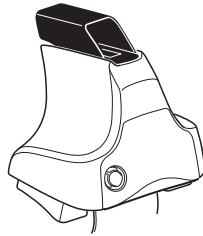
SUZUKI Grand Vitara, 5-dr SUV, 99-04

CHEVROLET Tracker, 5-dr SUV, 99-04

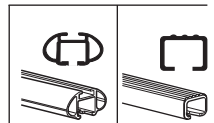
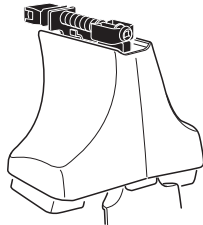
480R
754



480



750



xx kg
 xx lbs + 7 kg
 15,4 lbs =

Max. 75kg
Max. 165 lbs

80 km/h 50 Mph 130 km/h 80 Mph
 40 km/h 25 Mph

km/h Mph

THULE

Kit XXXX
 instructions

x1

x4

x4

x4
 x4

480R/754

x1

x4

x4

x4

480

x1

x4

x4

750

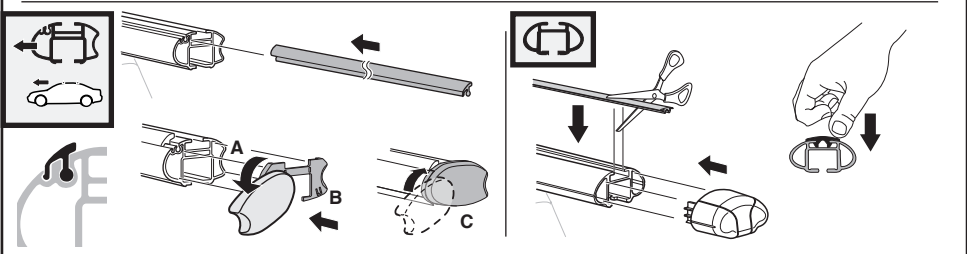
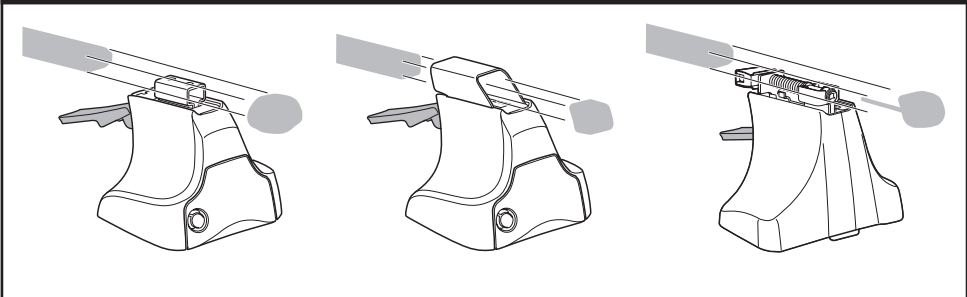
x2 x2 x2 x4	x2	x2 x2 x4 x4	x2 x2	x2

308 x 4

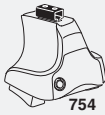
04 x 4

x 1

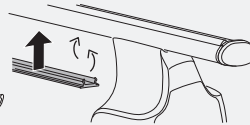
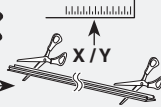
Kit



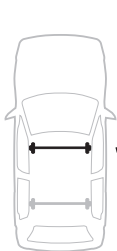
3



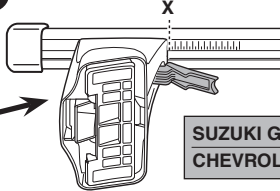
754



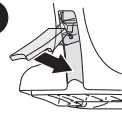
750



1



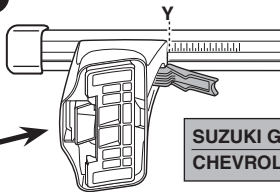
2



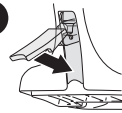
	X
SUZUKI Grand Vitara, 5-dr SUV, 99-04	32,5
CHEVROLET Tracker, 5-dr SUV, 99-04	32,5



1



2



	Y
SUZUKI Grand Vitara, 5-dr SUV, 99-04	30,5
CHEVROLET Tracker, 5-dr SUV, 99-04	30,5

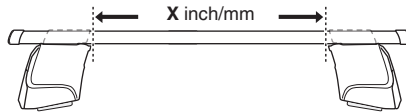


480R

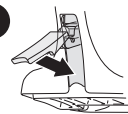


480

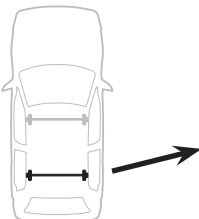
1



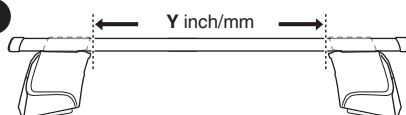
2



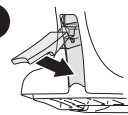
	X inch	X mm
SUZUKI Grand Vitara, 5-dr SUV, 99-04	38 ³ / ₈ "	976 mm
CHEVROLET Tracker, 5-dr SUV, 99-04	38 ³ / ₈ "	976 mm



1



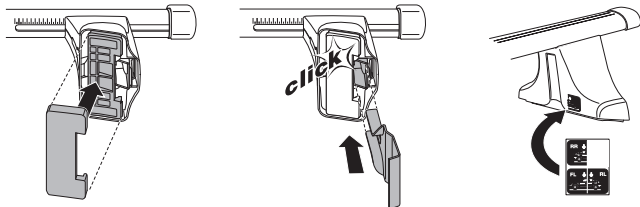
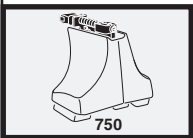
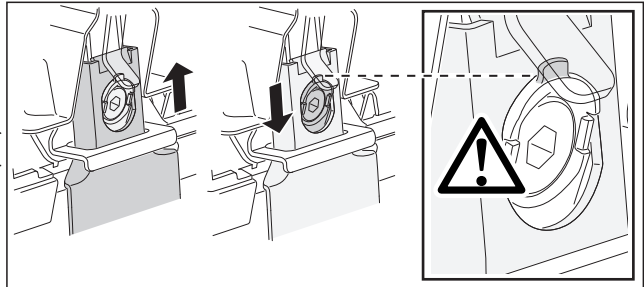
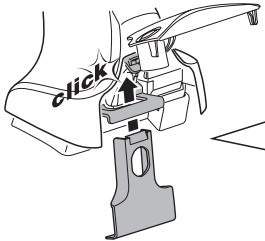
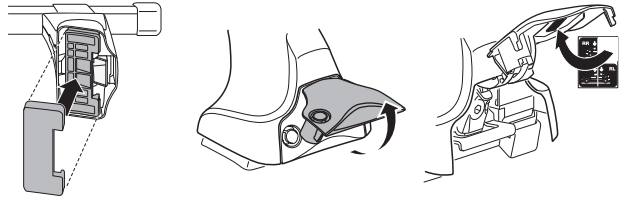
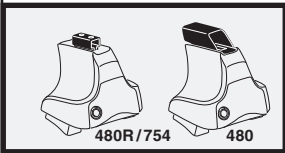
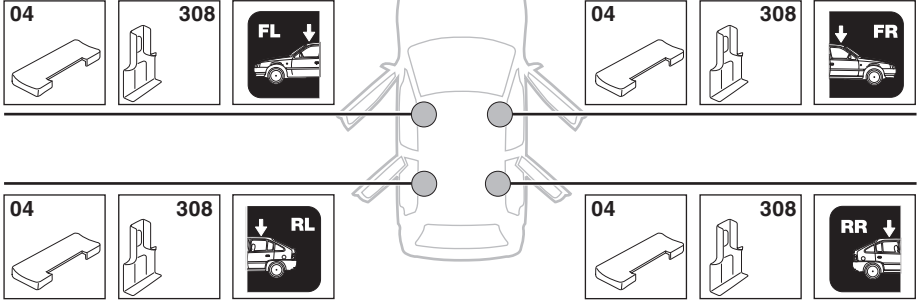
2



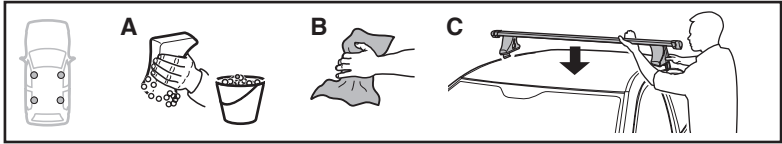
	Y inch	Y mm
SUZUKI Grand Vitara, 5-dr SUV, 99-04	37 ⁵ / ₈ "	956 mm
CHEVROLET Tracker, 5-dr SUV, 99-04	37 ⁵ / ₈ "	956 mm

4

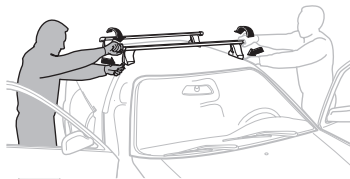
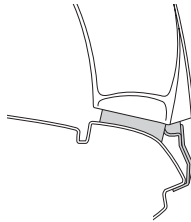
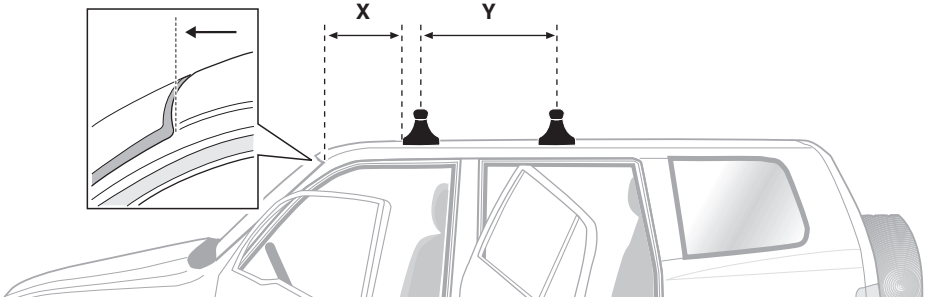
SUZUKI Grand Vitara, 5-dr SUV, 99-04
 CHEVROLET Tracker, 5-dr SUV, 99-04



5



	X mm	Y mm	X inch	Y inch
SUZUKI Grand Vitara, 5-dr SUV, 99-04	310 mm	750 mm	12 1/4"	29 1/2"
CHEVROLET Tracker, 5-dr SUV, 99-04	310 mm	750 mm	12 1/4"	29 1/2"



GB/US Tighten alternately

D Die Schrauben abwechselnd anziehen

F Serrer alternativement chaque côté

NL Afwisselend aan de linker- en de rechterkant aandraaien

I Alternare il serraggio delle viti

E Apretar alternativamente

PT Aperte alternadamente

S Dra åt växelvis

FIN Kierrä vuorotellen

EST Pinguldage vaheldumisi

LAT Pielvelciet pamīšus

LIT Užsukinėkite pakaitomis

PL Śruby dokręcaj naprzemiennie

RU Затягивайте попеременно

CZ Pokręťta bagażníka dokręcaj dokręcaj naprzemiennie.

SK Doťahujte striedavo

SLO Privijajte izmenično.

HR Naizmjenično zategnite

HU Egymástól függetlenül szorítandó

GR Σφιγγετε εναλλάξ

TR Dönüşümlü sıkın

中文 交替拧紧

한국어 번갈아 가며 조이십시오.

日本語 交互に締め付けてください。

ไทย ชั้้นโน้แบบสลับ

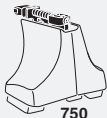
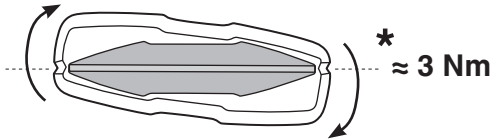
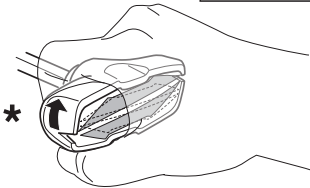
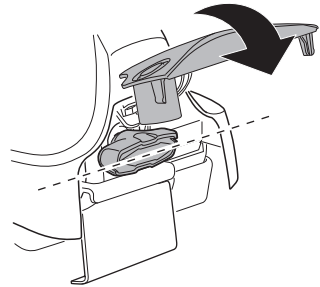
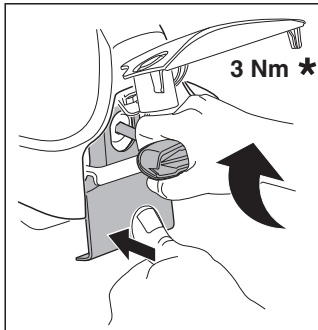
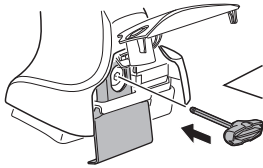
6



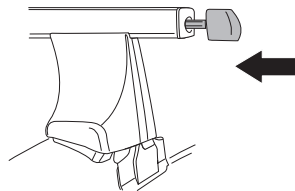
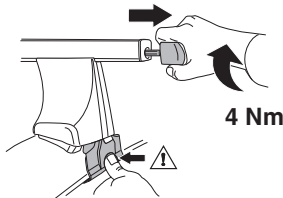
480R/754



480



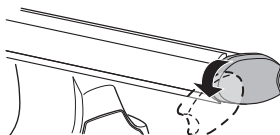
750



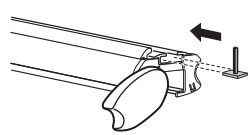
i



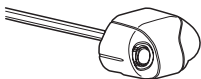
1



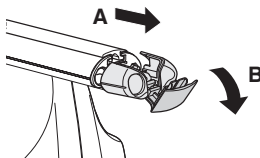
2



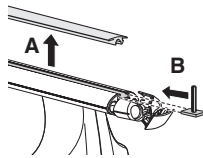
i



1



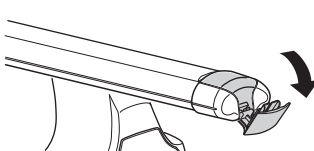
2



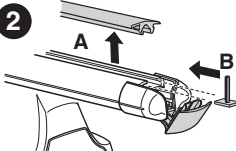
i

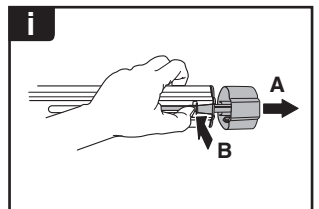
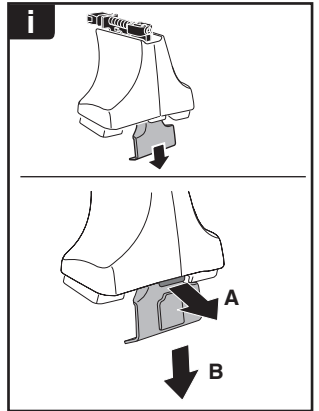
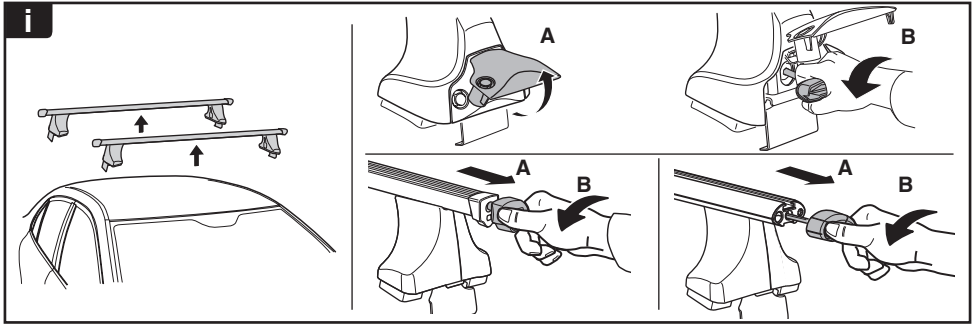


1

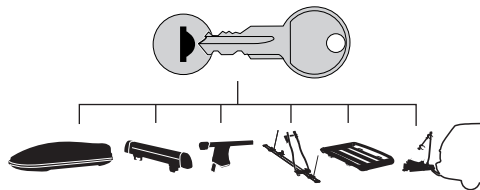


2

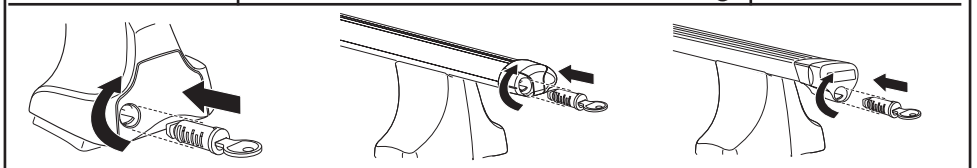




THULE
SWEDEN
**ONE
KEY
SYSTEM**



- 544 (x4)
- 596 (x6)
- 588 (x8)
- NA 510 (x10)
- EUR 452 (x12)
- ASIA



WW ▶ Thule Sweden AB, Box 69, 330 33 Hillerstorp, SWEDEN
NA ▶ Thule Inc., 42 Silvermine Road, Seymour, Connecticut 06483, USA

info@thule.com
customer.service@thule.com

www.thule.com