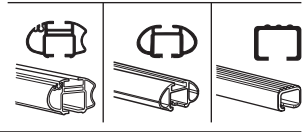
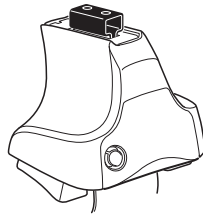


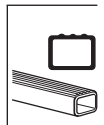
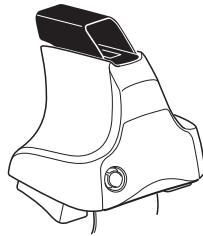
# Kit 1149

HOLDEN Commodore V.T, 4-dr Sedan, 97-05

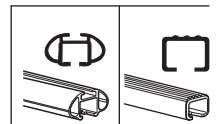
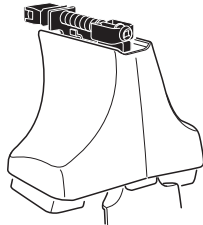
480R  
754



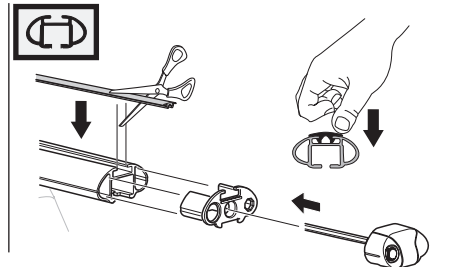
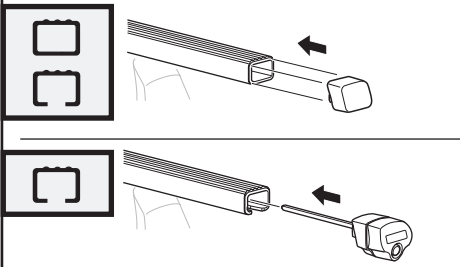
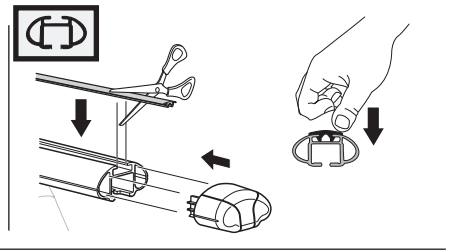
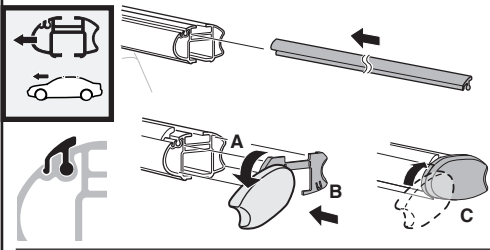
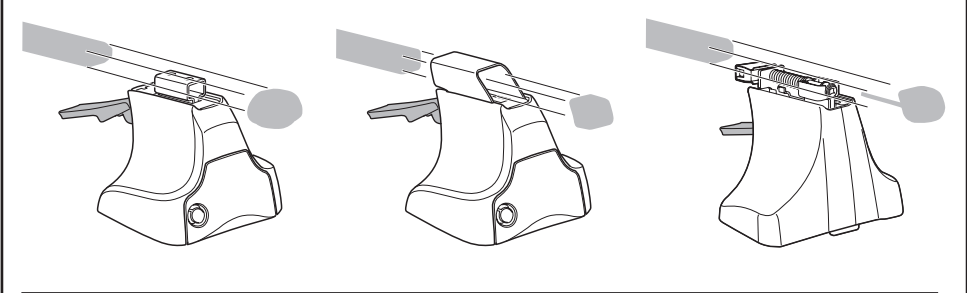
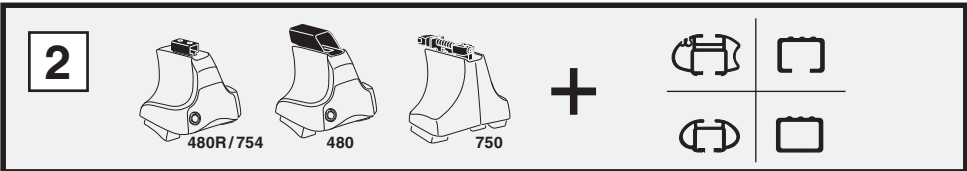
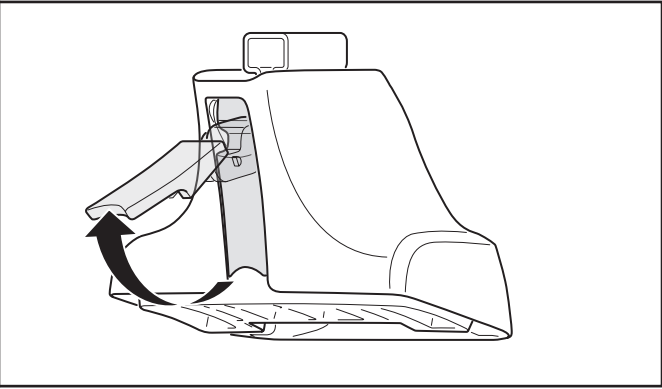
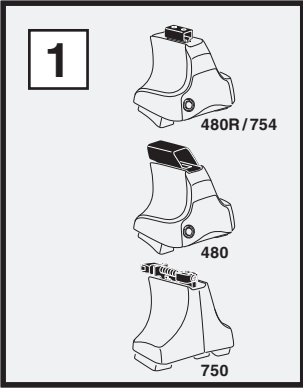
480

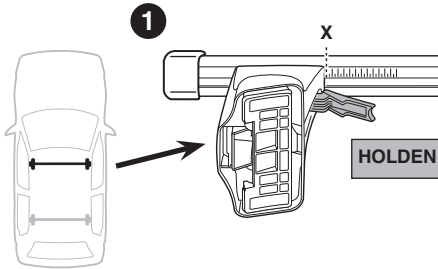
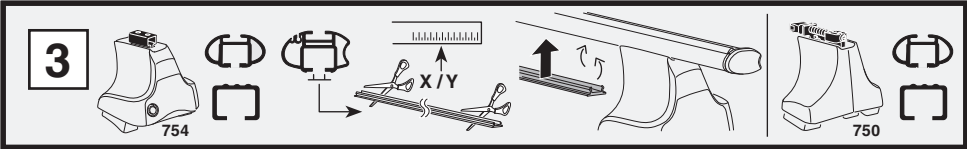


750

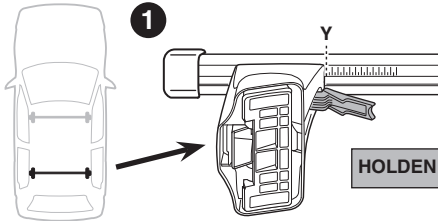


**Kit**

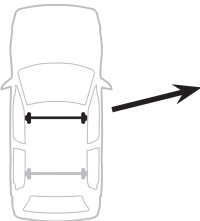
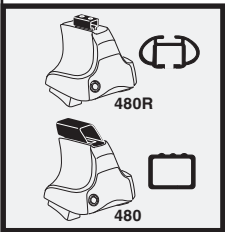




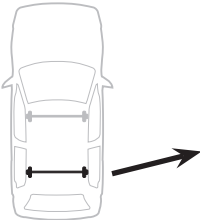
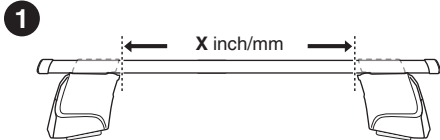
<b>1</b>	<b>x</b>
<b>HOLDEN Commodore V.T, 4-dr Sedan, 97-05</b>	<b>X</b>
	<b>41</b>



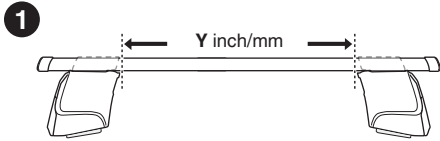
<b>1</b>	<b>y</b>
<b>HOLDEN Commodore V.T, 4-dr Sedan, 97-05</b>	<b>Y</b>
	<b>41,5</b>



<b>1</b>	<b>X inch/mm</b>	<b>2</b>
<b>HOLDEN Commodore V.T, 4-dr Sedan, 97-05</b>	<b>X inch</b>	<b>X mm</b>
	<b>41 3/4"</b>	<b>1061 mm</b>

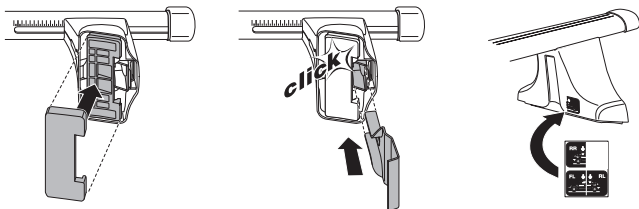
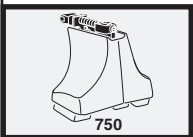
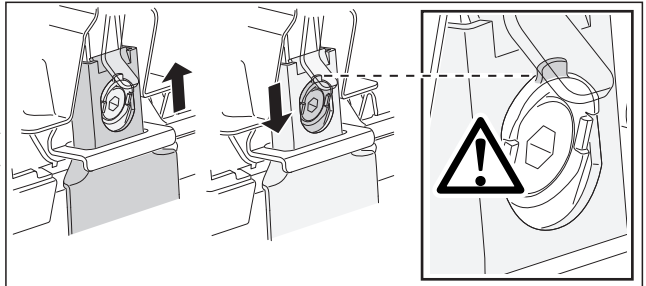
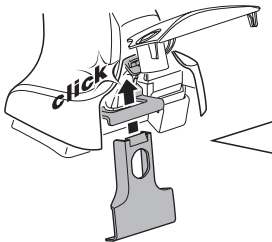
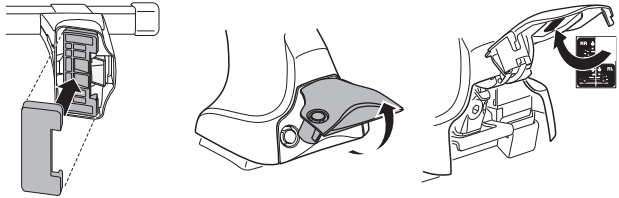
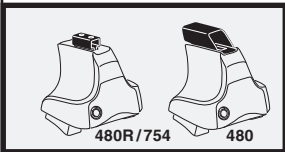
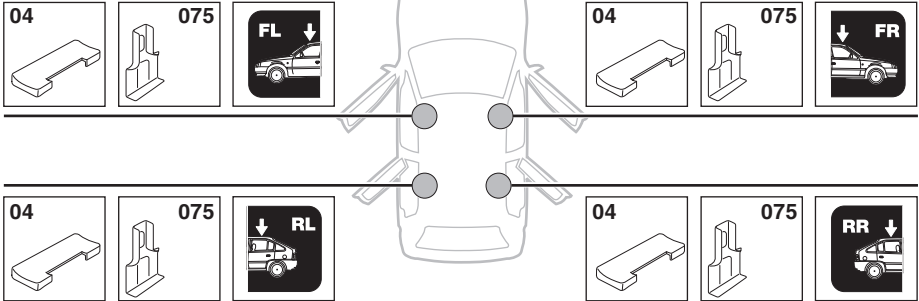


<b>1</b>	<b>Y inch/mm</b>	<b>2</b>
<b>HOLDEN Commodore V.T, 4-dr Sedan, 97-05</b>	<b>Y inch</b>	<b>Y mm</b>
	<b>42"</b>	<b>1066 mm</b>

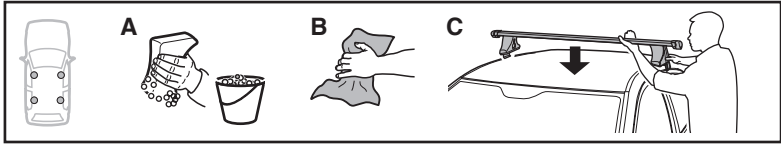


4

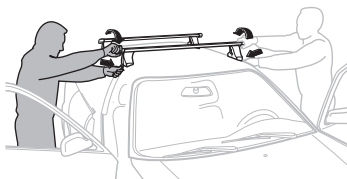
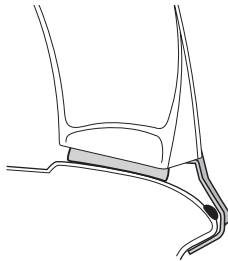
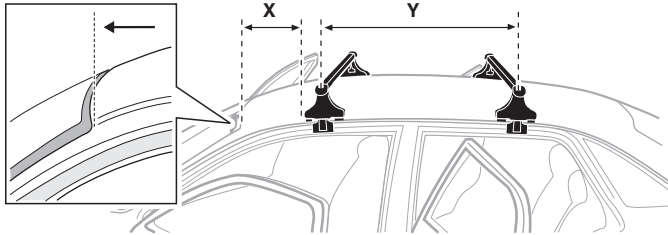
HOLDEN Commodore V.T, 4-dr Sedan, 97-05



5



	X mm	Y mm	X inch	Y inch
<b>HOLDEN Commodore V.T, 4-dr Sedan, 97-05</b>	<b>270 mm</b>	<b>710 mm</b>	<b>10 5/8"</b>	<b>28"</b>



**GB/US** Tighten alternately

**D** Die Schrauben abwechselnd anziehen

**F** Serrer alternativement chaque côté

**NL** Afwisselend aan de linker- en de rechterkant aandraaien

**I** Alternare il serraggio delle viti

**E** Apretar alternativamente

**PT** Aperte alternadamente

**S** Dra åt växelvis

**FIN** Kierrä vuorotellen

**EST** Pinguldage vaheldumisi

**LAT** Pieveļciet pamišus

**LIT** Užsukinėkite pakaitomis

**PL** Śruby dokręcaj naprzemiennie

**RU** Затягивайте попеременно

**CZ** Pokręťta bagażníka dokręcaj dokręcaj naprzemiennie.

**SK** Doťahujte striedavo

**SLO** Privijajte izmenično.

**HR** Naizmjenično zategnite

**HU** Egymástól függetlenül szorítandó

**GR** Σφιγγετε εναλλάξ

**TR** Dönüşümlü sıkın

**中文** 交替拧紧

**한국어** 번갈아 가며 조이십시오.

**日本語** 交互に締め付けてください。

**ไทย** ชันโนแบบสลับ

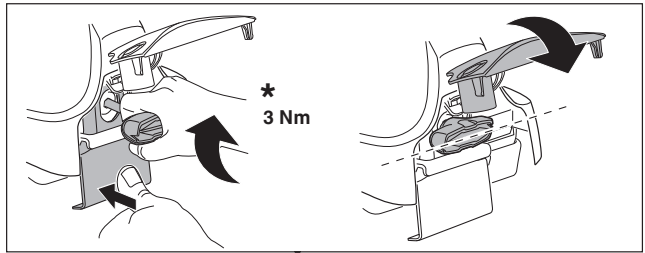
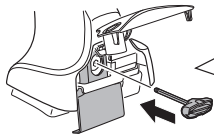
6



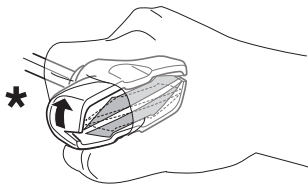
480R/754



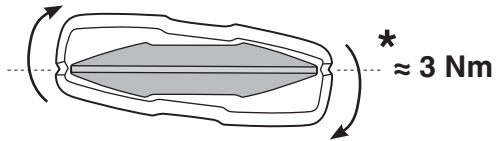
480



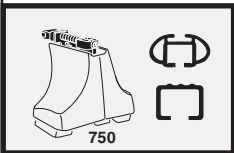
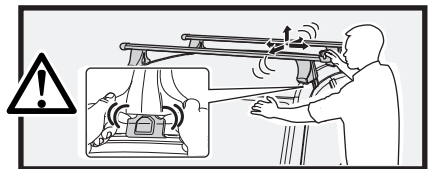
\*  
3 Nm



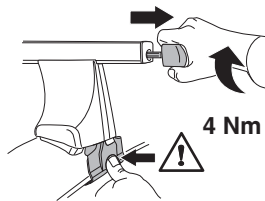
\*



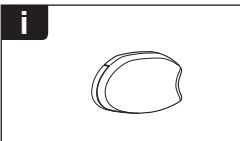
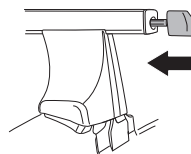
\*  
≈ 3 Nm



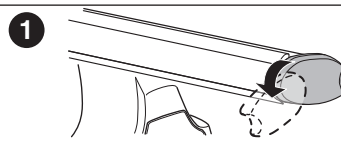
750



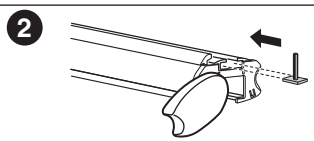
4 Nm



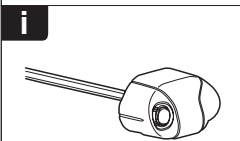
i



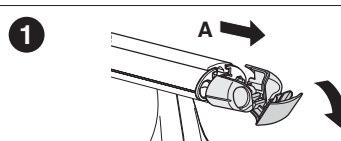
1



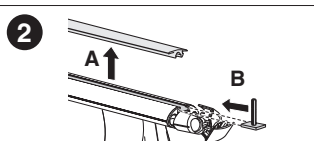
2



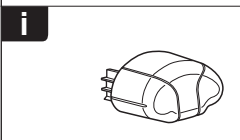
i



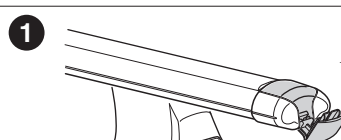
1



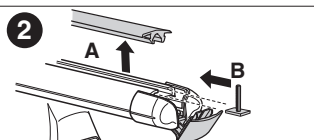
2



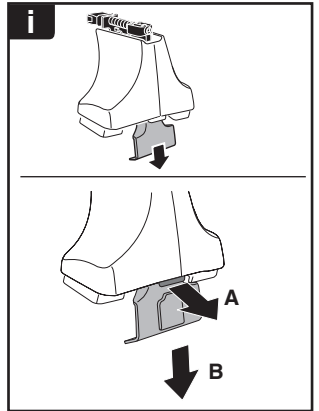
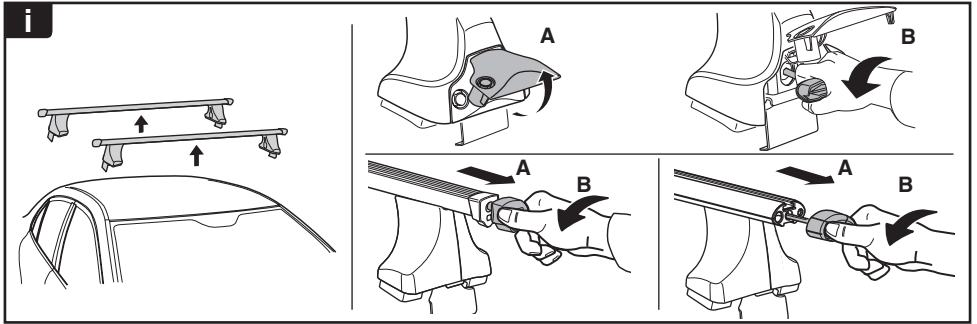
i



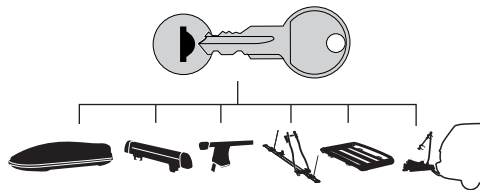
1



2



**THULE**  
SWEDEN  
**ONE  
KEY  
SYSTEM**



		544	(x4)
		596	(x6)
		588	(x8)
NA		510	(x10)
EUR		452	(x12)
ASIA			



WW ▶ Thule Sweden AB, Box 69, 330 33 Hillerstorp, SWEDEN  
NA ▶ Thule Inc., 42 Silvermine Road, Seymour, Connecticut 06483, USA

info@thule.com  
customer.service@thule.com

www.thule.com