



Thule Rapid System Kit 1084

> Instructions

FORD Ka, 3-dr Hatchback, 97-08

The diagram is divided into several sections:

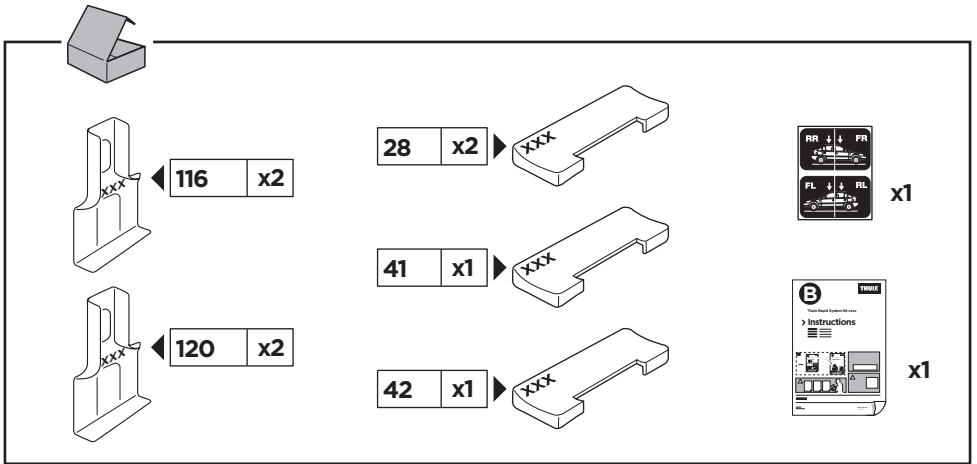
- Top Left:** An information icon (i) and a warning triangle (⚠) are shown. An arrow points to a person reading a manual. Below the manual is a pencil and a form with asterisks.
- Top Middle:** Two instruction manuals are shown. Manual 'B' is titled 'Thule Rapid System Kit 1084 > Instructions' and manual 'A' is titled 'Thule Rapid System 754 > Instructions'. An arrow points from manual B to manual A.
- Top Right:** A weight calculation diagram. It shows a bag labeled 'xx kg / xx lbs' plus a rack labeled '7 kg / 15,4 lbs' and two screws labeled '3 kg / 6,6 lbs'. Below this, an equals sign points to a box containing 'Max. 65 kg' and 'Max. 143 lbs'.
- Bottom Left:** A warning triangle (⚠) is shown next to three manuals: 'A' (Thule Rapid System 754), 'B' (Thule Rapid System Kit 1084), and 'C' (Thule Rapid System 1084 Security). An arrow points to a person reading a manual.
- Bottom Right:** A warning triangle (⚠) is shown next to a car with arrows indicating the rack's position. A speedometer graphic shows a warning zone between 40 km/h (25 Mph) and 130 km/h (80 Mph).

ISO 11154-E

141084

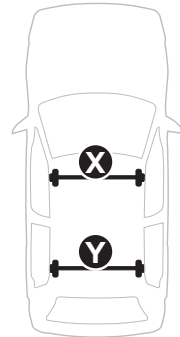
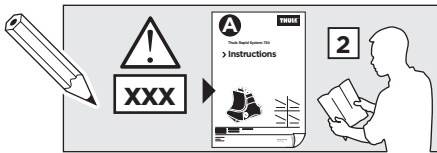
C.20140217
519-1084-01

Bring your life
thule.com



1

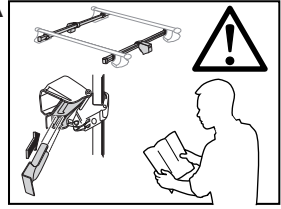
	X (scale)	X (mm)	X (inch)
FORD Ka, 3-dr Hatchback, 97-08	19	841	33 1/8



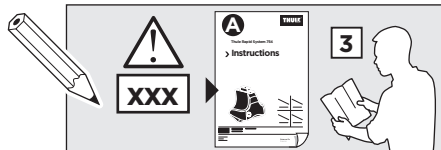
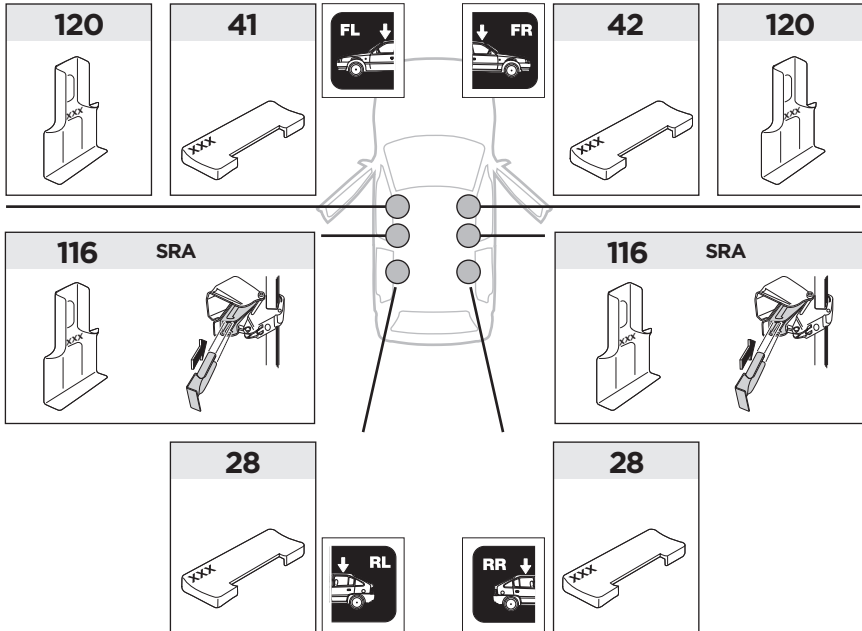
	Y (scale)	Y (mm)	Y (inch)
FORD Ka, 3-dr Hatchback, 97-08	16	811	31 7/8

2

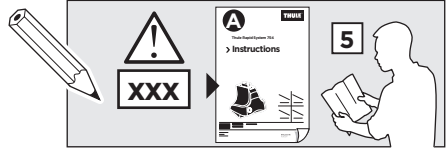
SRA



FORD Ka, 3-dr Hatchback, 97-08



3



	W (mm)	Z (mm)	Y (mm)	W (inch)	Z (inch)	Y (inch)
FORD Ka, 3-dr Hatchback, 97-08	210	700	310	8 1/4	27 1/2	12 1/4

