



# Rhino Rack 2500 Series - DK195

FRONT							
VEHICLE	Date	Crossbar	Pad / Clamp FRONT RIGHT	Pad / Clamp FRONT LEFT	Foot plate arrow direction	Bar measurement strip. Length per side.	HD Crossbar distance ( x ).
Toyota Prius (ZVW30R) 5dr hatch	2009-	1180mm	M282 / SUB0261	M281 / SUB0261	OUT	124mm	926mm / 36,29/64"
Toyota Prius v (ZVW40) 5dr wagon	2012-	1260mm	M282 / SUB0261	M281 / SUB0261	OUT	28mm	930mm / 36,39/64"
Toyota Prius+ (ZVW40) 5dr wagon	2012-	1260mm	M282 / SUB0261	M281 / SUB0261	OUT	28mm	930mm / 36,39/64"

REAR							
VEHICLE	Date	Crossbar	Pad / Clamp REAR RIGHT	Pad / Clamp REAR LEFT	Foot plate arrow direction	Bar measurement strip. Length per side.	HD Crossbar distance ( x ).
Toyota Prius (ZVW30R) 5dr hatch	2009-	1180mm	M284 / SUB0261	M283 / SUB0261	OUT	106mm	890mm / 35,3/64"
Toyota Prius v (ZVW40) 5dr wagon	2012-	1260mm	M284 / SUB0261	M283 / SUB0261	OUT	11mm	896mm / 35,9/32"
Toyota Prius+ (ZVW40) 5dr wagon	2012-	1260mm	M284 / SUB0261	M283 / SUB0261	OUT	11mm	896mm / 35,9/32"



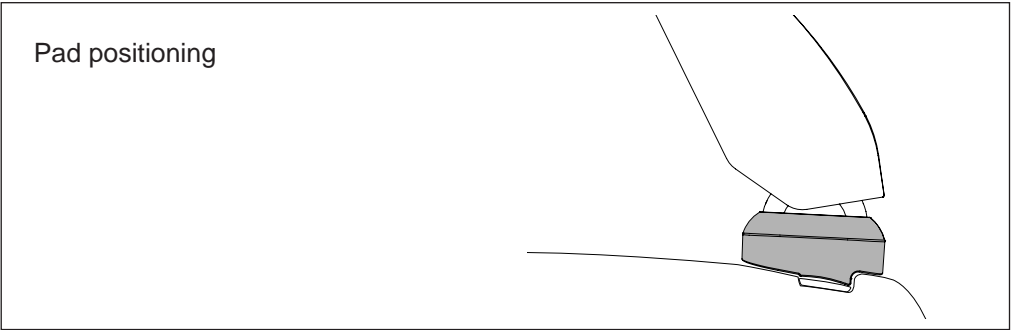
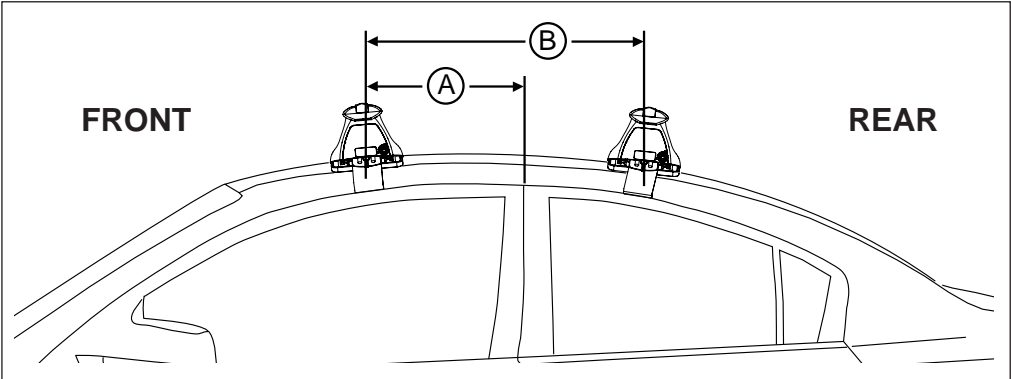
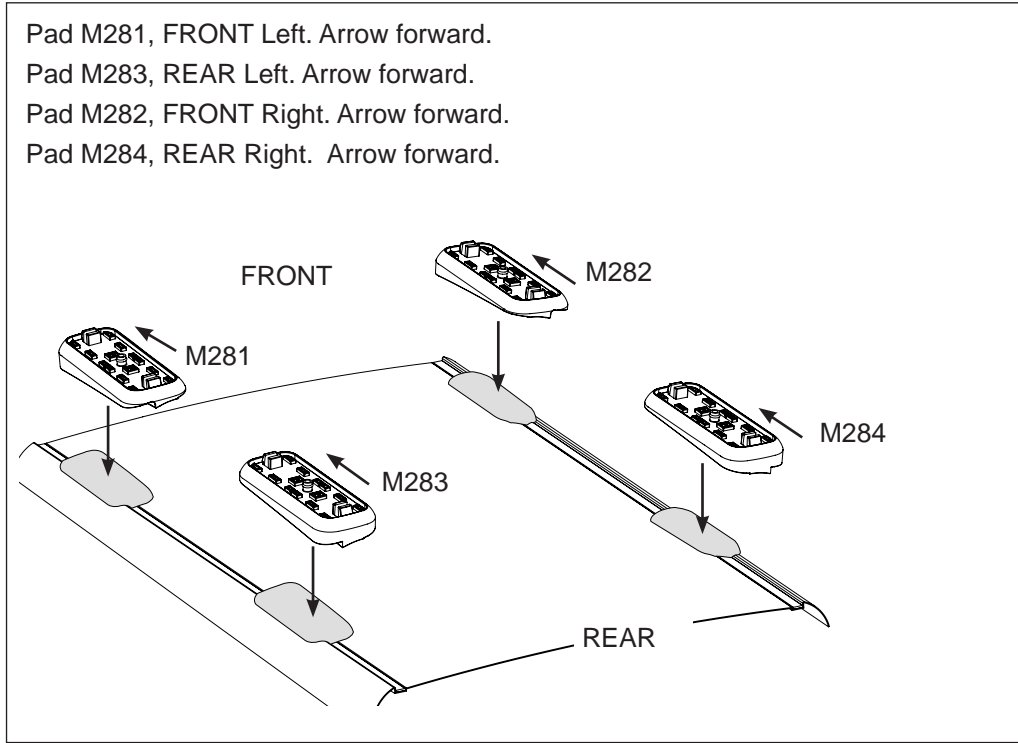
# Rhino Rack 2500 Series - DK195

**Measurement A:** CENTRE of door jamb to CENTRE arrow of leg foot plate.

**Measurement B:** CENTRE of Front leg foot plate arrow to CENTRE of Rear leg foot plate arrow.

**Carrying capacity:** Roof rack is rated to 75kg. Please refer to manufacturers handbook for your vehicles maximum roof load capacity. Always use the lower of the two figures.

If your vehicle is not listed on this fitting instruction please refer to your countries Rhino-Rack web site for the latest information.



VEHICLE	Date	Measurement A	Measurement B	Load rating (includes racks 5kg / 11lbs)
Toyota Prius (ZVW30R) 5dr hatch	07/09-	270mm / 10,5/8"	700mm / 27,9/16"	50kg / 110lbs
Toyota Prius v (ZVW40) 5dr wagon	2012-	50mm / 1,31/32"	700mm / 27,9/16"	60kg / 132lbs
Toyota Prius+ (ZVW40) 5dr wagon	2012-	50mm / 1,31/32"	700mm / 27,9/16"	60kg / 132lbs