



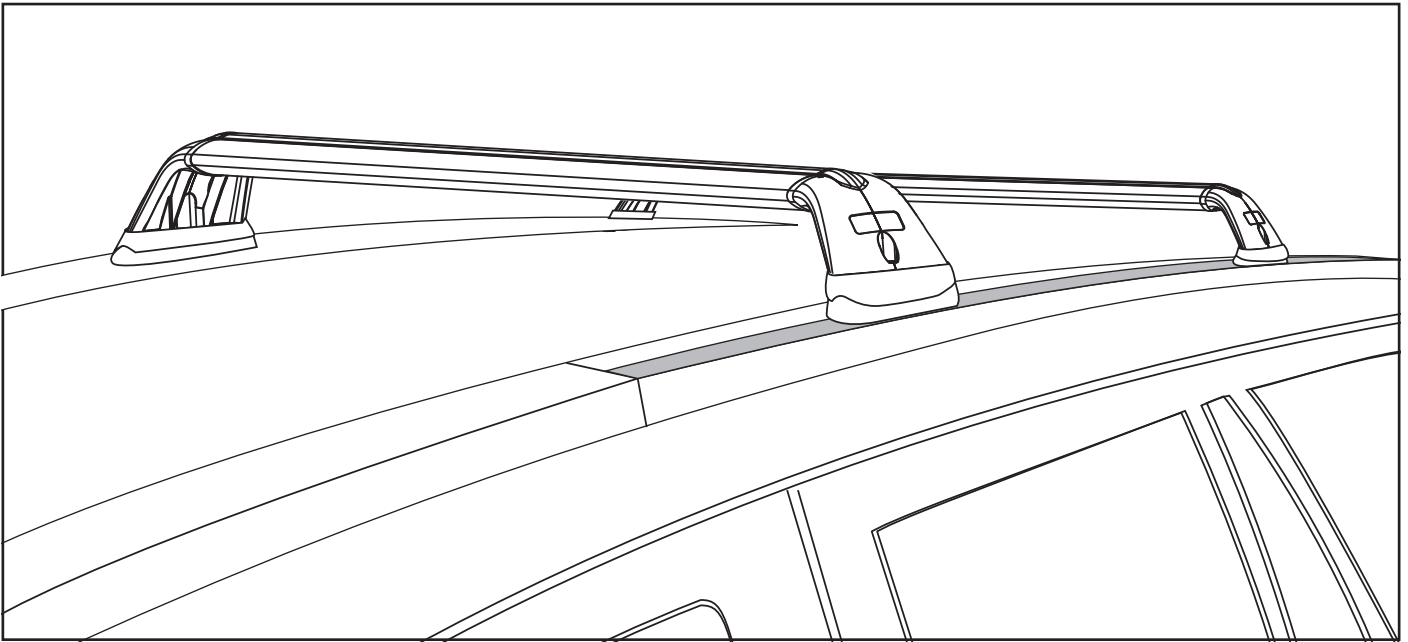
RHINO-RACK

Aerodynamic & Heavy Duty Roof Rack Systems

RSP503 Rhino Sportz - Great Wall X240 (with factory tracks)

NOTE:

Please read these instructions carefully prior to installation.
Please refer to your fitting instruction to ensure that the roof racks are installed in the correct locations.
Check the contents of kit before commencing fitment and report any discrepancies.
Place these instructions in the vehicle's glove box after installation is complete.



Care Instruction: Wash vehicle roof especially the mounting points prior to installation.

Maximum carrying capacity : 75kg evenly distributed over the two cross bars.

Recommendations:

It is essential that all bolt connections be checked after driving a short distance when you first install your cross bars. Bolt connections should be checked again at regular intervals (probably once a week is enough, depending on road conditions, usage, loads and distances travelled). You should also check the cross bars each time they are re-fitted.

Make sure to fasten your load securely. Please ensure that all loads are evenly distributed over the two cross bars and that the centre of gravity is kept as low as possible.

Use only non-stretch fastening ropes or straps.

Caution:

The handling characteristics of the vehicle change when you transport a load on the roof. For safety reasons, we recommend exercising extreme care when transporting large wind-resisting loads; special consideration must be taken into account when negotiating corners and under braking.

Please remove cross bars when putting vehicle through an automatic car wash.

Load Ratings:

Maximum permissible load is **75kg evenly distributed over the two cross bars**. When cross bars are to be used in off-road conditions, please build a safety factor of 1.5 into this load limit. 50kg maximum for off-road conditions. Although the cross bars are tested and approved to AS1235-2000, Australian road conditions can be much more rigorous. However, increasing the number of cross bars does not increase the vehicles maximum permissible roof loading.

Note for Dealers and Fitters:

It is your responsibility to ensure instructions are given to the end user or client.

Rhino-Rack
3 Pike Street, Rydalmere,
NSW 2116, Australia.
(Ph) (02) 9638 4744
(Fax) (02) 9638 4822

Issue No: R045
Prepared By: Andy Wana
Authorised By: Gary England

Issue No: 01
Date: 15/11/2010

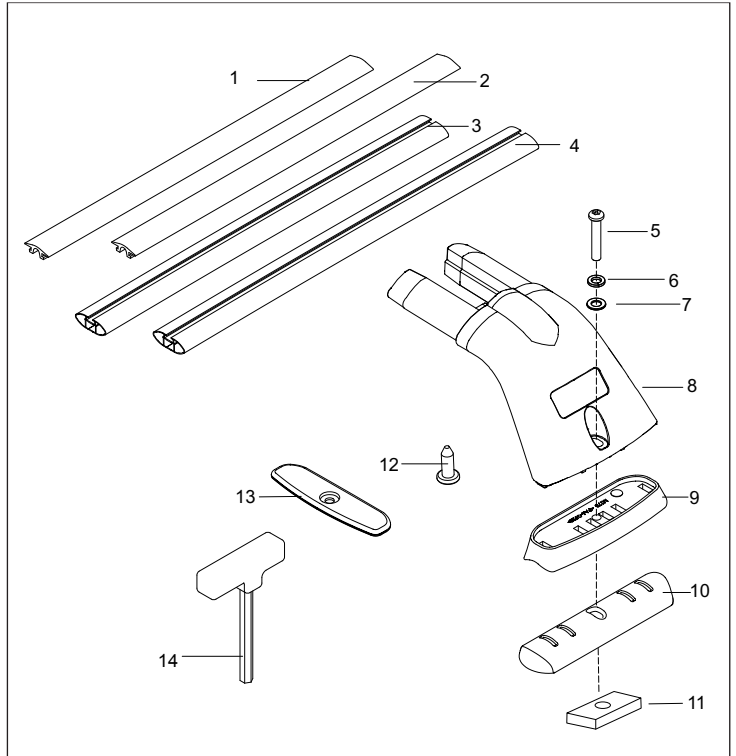
These instructions remain the property of Rhino-Rack Australia Pty Ltd and may not be used or changed for any other purpose than intended.



RSP503 Rhino Sportz - Great Wall X240 with tracks

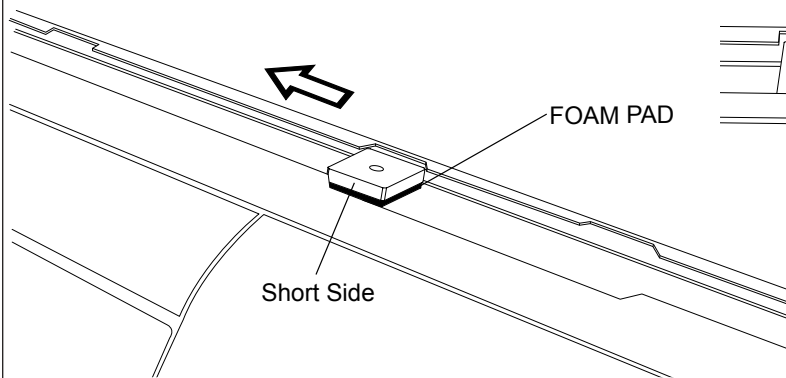
Parts List

Item	Component Name	Qty	Part No.
1	Rubber Buffer Strip 860mm	1	R011
2	Rubber Buffer Strip 815mm	1	R011
3	Sportz Crossbar 860mm	1	
4	Sportz Crossbar 815mm	1	
5	M6 x 40mm Security Bolt	4	B085
6	M6 Spring Washer	4	W004
7	M6 Flat Washer	4	W003
8	RSP Leg	4	RSPLK
9	Top Pad Track	4	M173
10	Bottom Pad Track	4	M172
11	Track Nut	4	N035A
12	Self Tapping Screw	4	B045
13	Mounting Pad Cover Plate	4	M126
14	Security Allen Key	1	SecKey-S
15	Fitting Instruction	1	R045

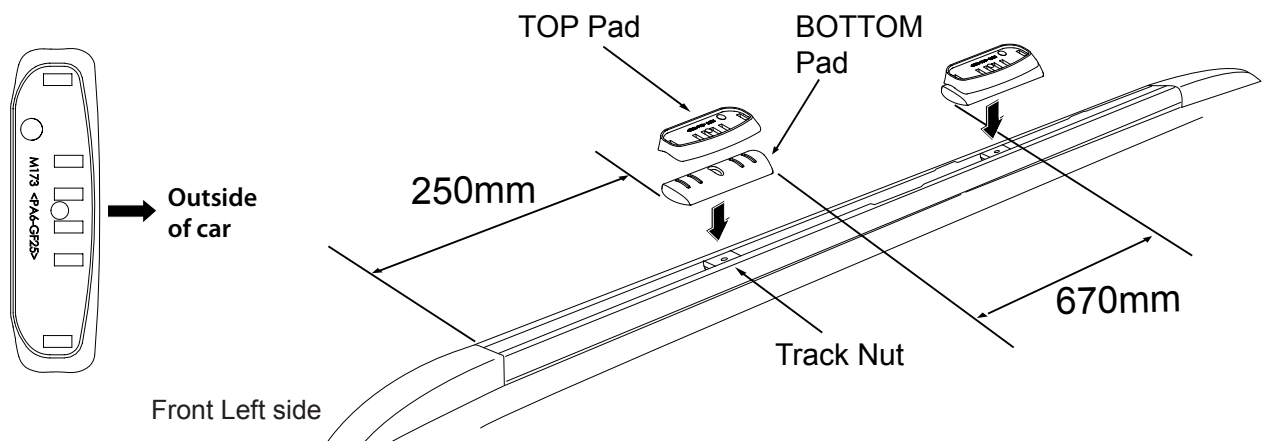


Tools Required : Security key, included in kit, Phillips Head Screwdriver, Tape Measure.

- 1** With the foam facing downward place two M6 rectangular track nuts into each track. Push down on the nut and slide along the track. Position the M6 track nuts so they are **NOT** lying in a cutout on the track.



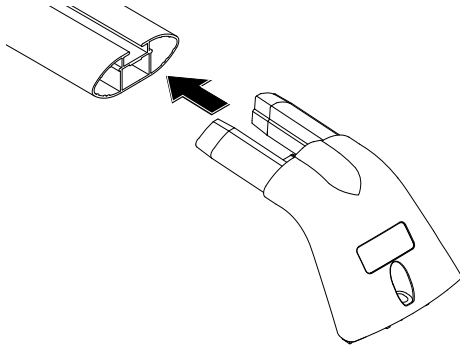
- 2** Place the bottom and top pads on the track at the measurements shown. The M6 rectangular nut must be fully located in the track and **NOT** under a cutout.



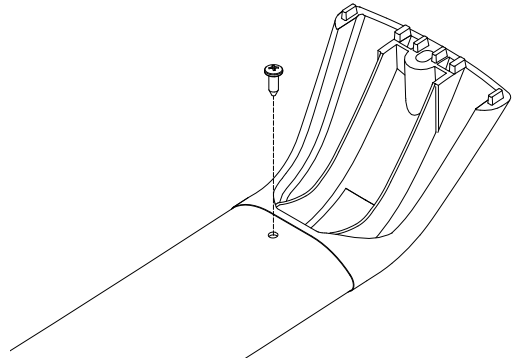


RSP503 Rhino Sportz - Great Wall X240 with tracks

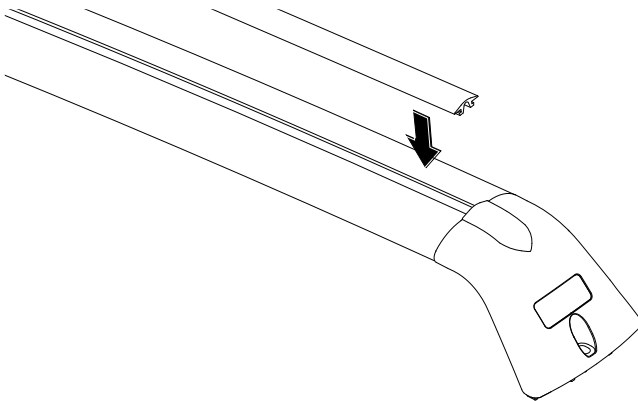
- 3** Insert the leg fully into the crossbars, a rubber mallet may be required to knock the leg in place.



- 4** From the underside of the crossbar insert the phillips head screw.



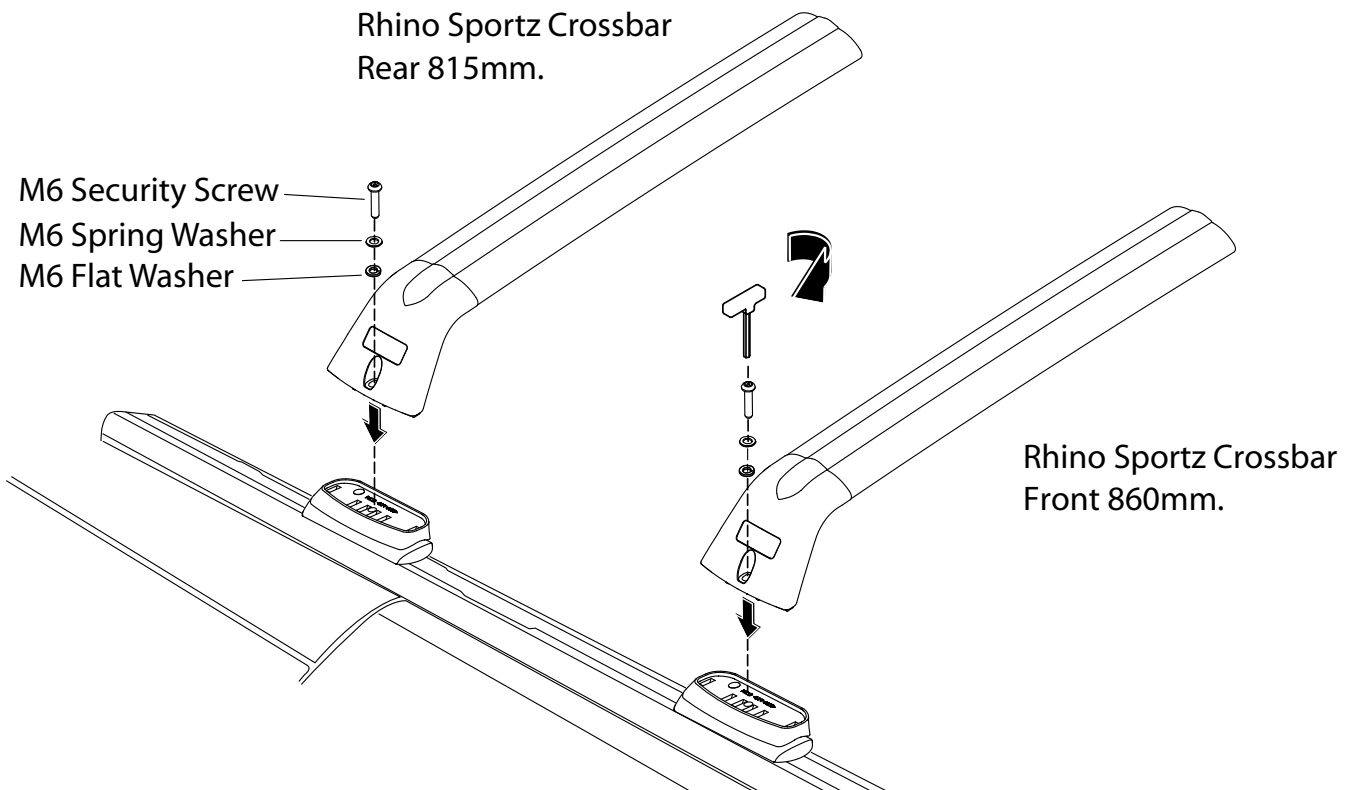
- 5** Insert the correct length rubber buffer strip into the top of the crossbar. FRONT crossbar and rubber is 860mm. REAR crossbar and rubber is 815mm.



- 7** Crossbars are labeled FRONT and REAR with a sticker. Place each crossbar onto the Top Pad. Assemble the washers onto the security screws. Insert the screw assembly through the Sportz leg mounting hole. Before final tightening re check the distance between the Sportz Bar assembly as described in **Step 2** of the fitting instruction. Tighten using the allen key provided. Recommended tightening torque 3-4N/m. **DO NOT OVER TIGHTEN.**

Rhino Sportz Crossbar
Rear 815mm.

M6 Security Screw
M6 Spring Washer
M6 Flat Washer



Rhino Sportz Crossbar
Front 860mm.