



# RHINO-RACK

Aerodynamic & Heavy Duty Roof Rack Systems

## RLCP17 Rhino Heavy Duty – Toyota Landcruiser 200 Series Three Crossbar System.

Place these instructions in vehicle's glovebox after installation is complete.

**Important:** Please read these instructions carefully prior to installation.  
Please refer to your fitting instruction to ensure that the roof racks are installed in the correct locations.  
Check the contents of the kit before commencing fitment and report any discrepancies.

### Parts List

Item.	Component Name.	Qty	Part No.
1	Heavy duty leg.	6	M123
2	M10 x 20mm Hex bolt	6	B003
3	M10 Channel nut.	6	N024
4	M10 shake proof washer.	6	W021
5	M10 Flat washer.	6	W022
6	Front left mounting pad.	1	M354
7	Front right mounting pad.	1	M355
8	Middle left mounting pad.	1	M356
9	Middle right mounting pad.	1	M357
10	Rear left mounting pad.	1	M358
11	Rear right mounting pad.	1	M359
12	Mounting pad gasket (L).	3	M360
13	Mounting pad gasket (R).	3	M361
14	1375mm Heavy duty crossbar. (Sold Separately)	3	A013A
15	Heavy duty rubber buffer strip. (Sold Separately)	3	R004
16	M8 x 40mm socket head screws.	12	B162
17	M8 Flat washers.	12	W043
18	M8 Spring washer.	12	W019
19	Mounting pad O-ring.	12	C299
20	M6 x 27mm Security screw.	6	B063
21	M6 Flat washers.	6	W003
22	M6 Spring washers.	6	W004
23	Security Allen key.	1	H021
24	6mm Allen keys.	1	H009
25	End cap.	6	M002
26	Mounting pad washer & gasket.	12	C588



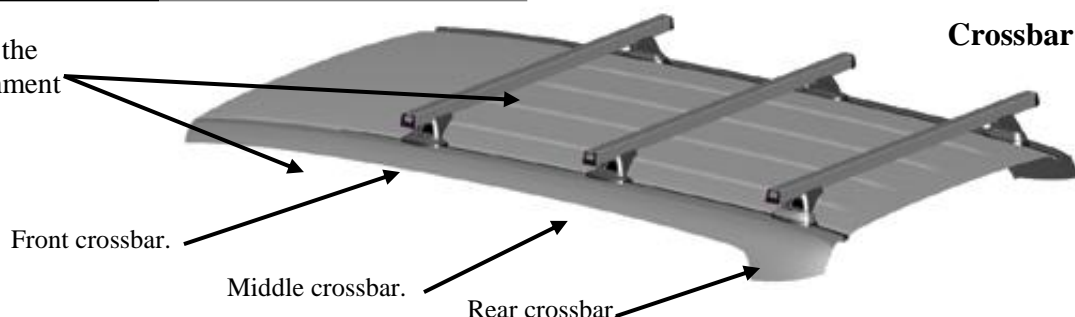
### Tools Required:

16mm Ring spanner, tape measure, rubber mallet.  
Security Type Allen Key, provided in kit.

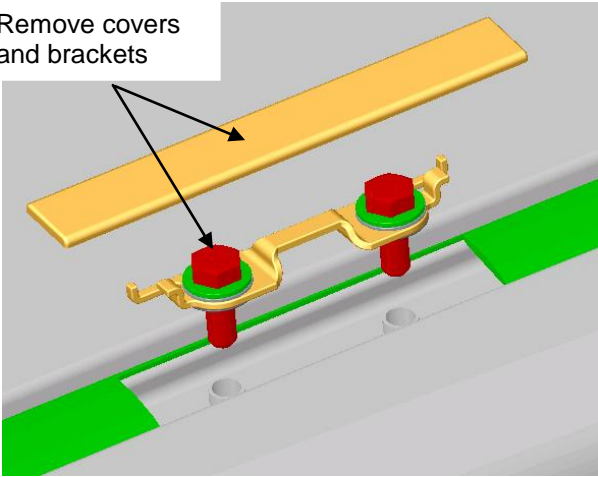
### Care Instructions:

Clean vehicle roof prior to fitting the roof racks.

Do not use the front attachment points.



Remove covers and brackets



**1:** Remove the roof rack attachment point covers.

**2:** Remove exposed bolts and brackets.

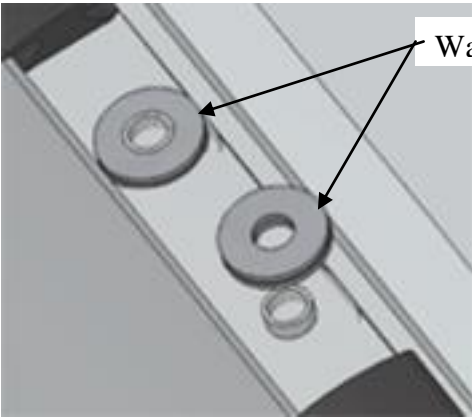
**Caution:** Loosen both bolts together, then remove.

**Careful not to push the tube locators down into the body.**

**3:** Store covers, bolts and brackets in a safe place.

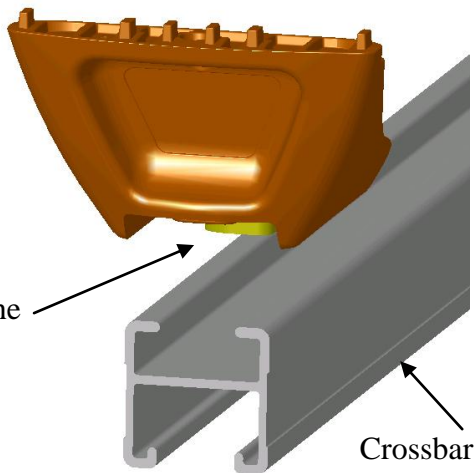
**Note:** The existing bolts and washers are not used to fit the mounting pads.

Washer Gaskets.



**4:** Place the gasket washer onto the plastic tube attachment bolt locators in the vehicles roof .

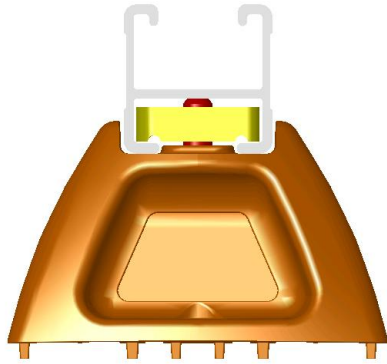
Insert the leg into the crossbar.



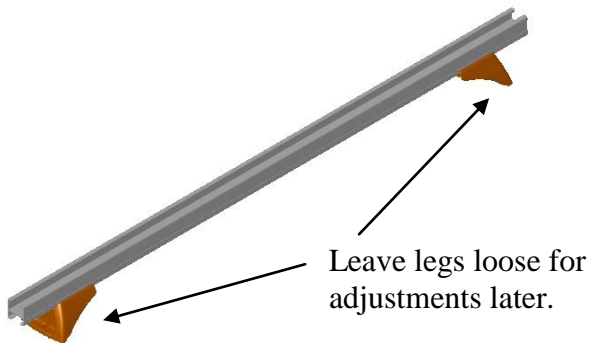
Crossbar

**4:** Insert the heavy duty leg assembly into the underside channel of the crossbar.

**5:** Turn (to tighten) the leg attachment bolt so that the channel nut turns to locate across the crossbar. Finger tighten the bolt as the legs will require adjustment later.



**6: Check that the channel nut is fully located across the bar.**

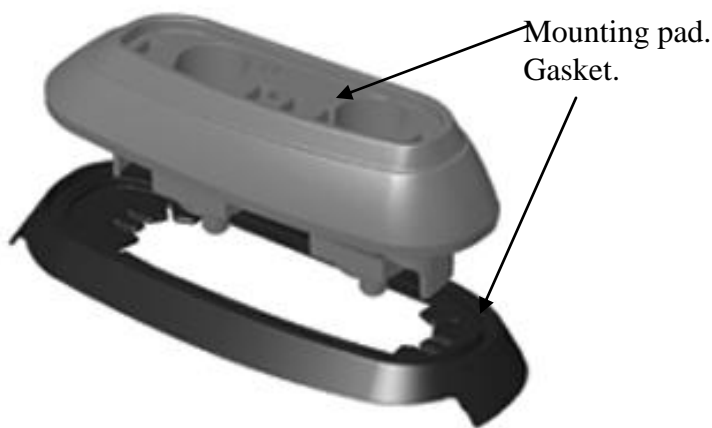


**7: Each mounting pad is identified with a part number, position code and direction arrow.**

**The arrow must point to the front of the vehicle.**

The mounting pad position code is as followed: -

- Front left side pad – FL.
- Front right side pad – FR.
- Middle left side pad – ML.
- Middle right side pad – MR.
- Rear left side pad – RL.
- Rear right side pad – RR.



**8: The mounting pad gaskets are identified L & R. The L gaskets fit the left side pads, the R gaskets fit the right side pads. The direction arrows on the pads and gaskets must face the same direction.**

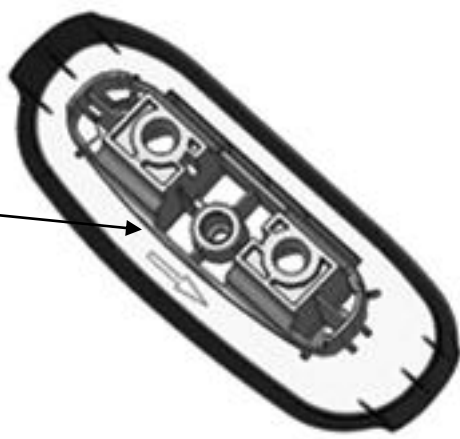
L Gasket fit pads, FL, ML, RL.

R gasket fit pads, RL, RM, RR.

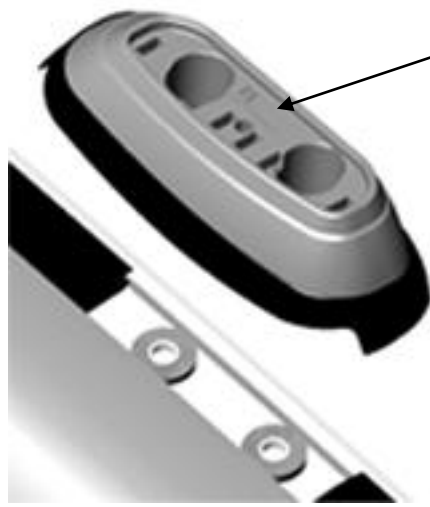
Fitting:

Turn the mounting pad over and push the gasket over the mounting feet and fully fit the gasket over the pad.

Gasket direction arrow and position identification on this face.



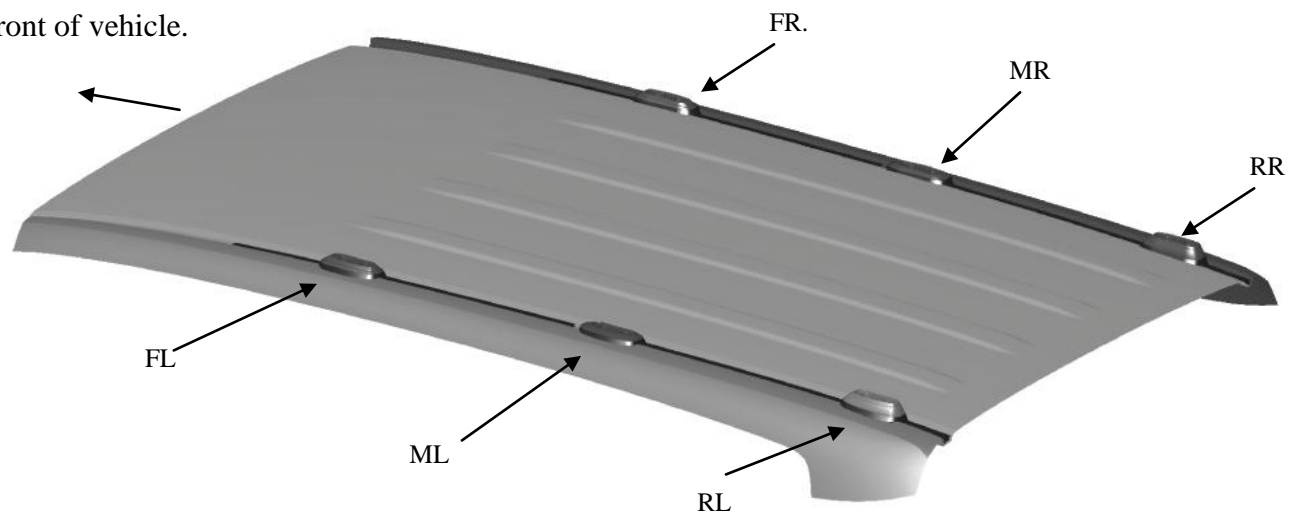
8: Cont.

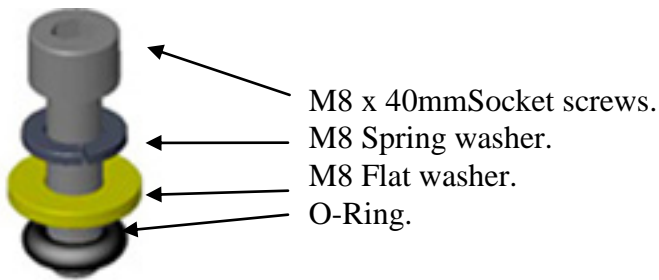


Arrow facing to the front.

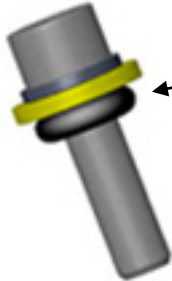
9: Using the mounting pad layout as a guide, place the pads onto their respective positions.  
**Note:**  
**Ensure that the arrows on the pads are facing to the front of the vehicle.**

Front of vehicle.



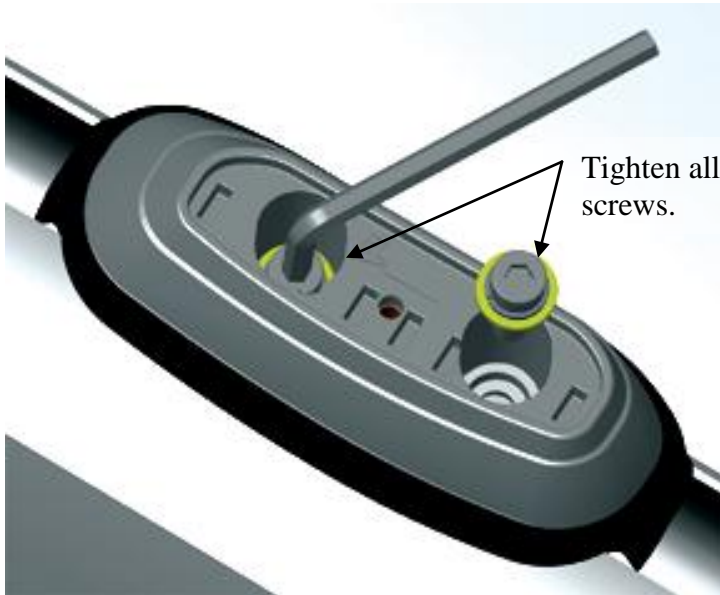


M8 x 40mm Socket screws.  
M8 Spring washer.  
M8 Flat washer.  
O-Ring.



The O-ring must be in this position prior to inserting the screw assembly into the mounting pad.

**10:** Place the M8 spring washer, M8 flat washer and O-ring onto M8 socket screws. Ensure that the O-ring is pushed up under the flat washer.

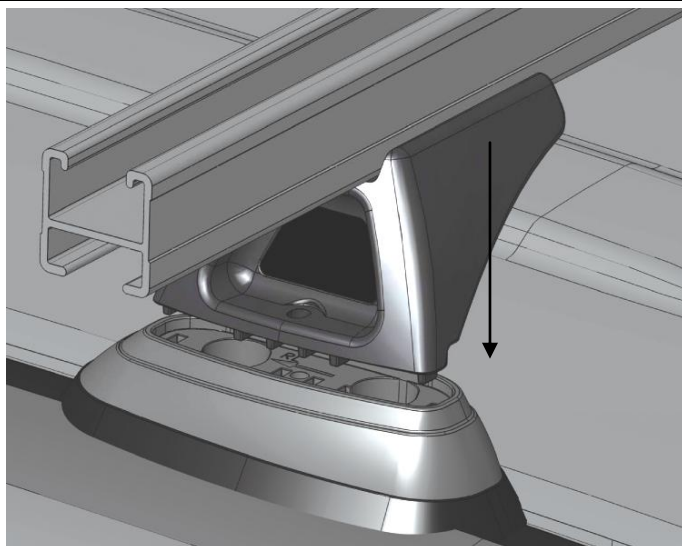


Tighten all screws.

**11:** Insert the assembled screws through the mounting pads and screw into the nutserts in the vehicles roof. Tighten all screws using the security Allen key provided.

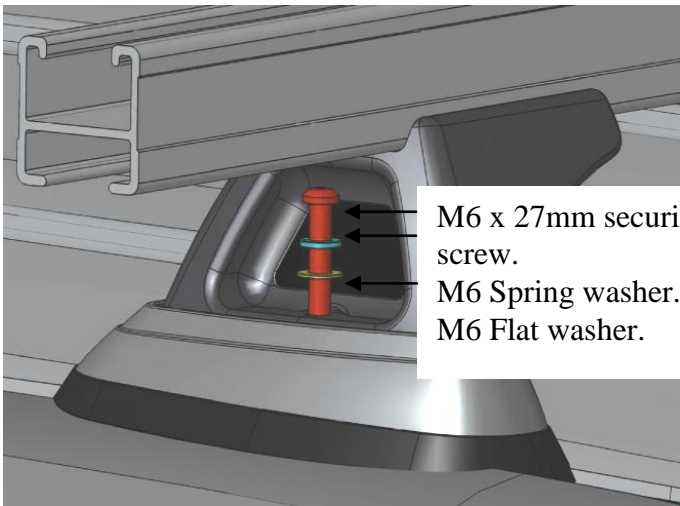
Recommended tightening torque 5N/m.

**DO NOT OVER TIGHTEN.**



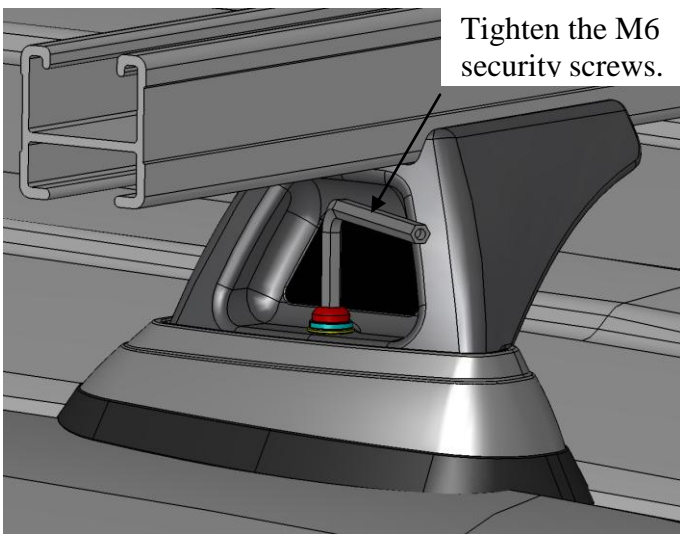
**12:** Insert the heavy duty legs into the mounting pads.





M6 x 27mm security screw.  
 M6 Spring washer.  
 M6 Flat washer.

**13:** Place the M6 spring washer and M6 flat washer onto the M6 x 27mm security screw. Insert the M6 screw assemble through the heavy duty leg and screw into the mounting pad.

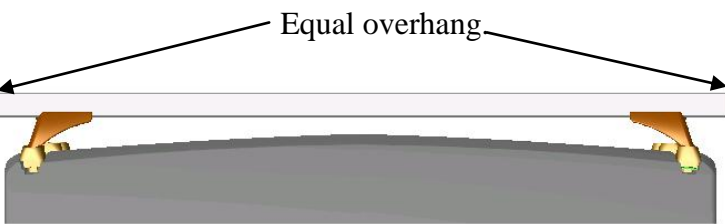


Tighten the M6 security screws.

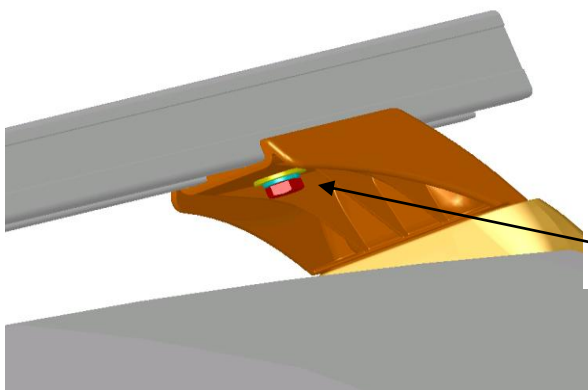
Using the security Allen key provided tighten heavy duty leg attachment screws to secure the crossbars.

Recommended tightening torque 4N/m.

**DO NOT OVER TIGHTEN.**



**14:** Adjust the crossbar to achieve equal overhang each side of the crossbar.

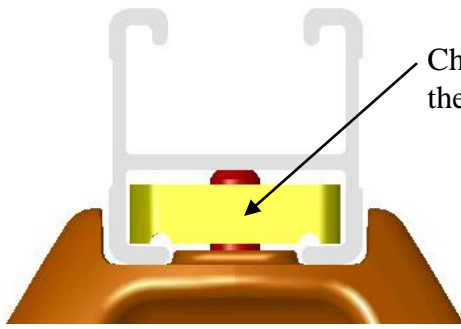


Tighten the crossbar attachment bolt.

**15:** Tighten the crossbar attachment bolts.

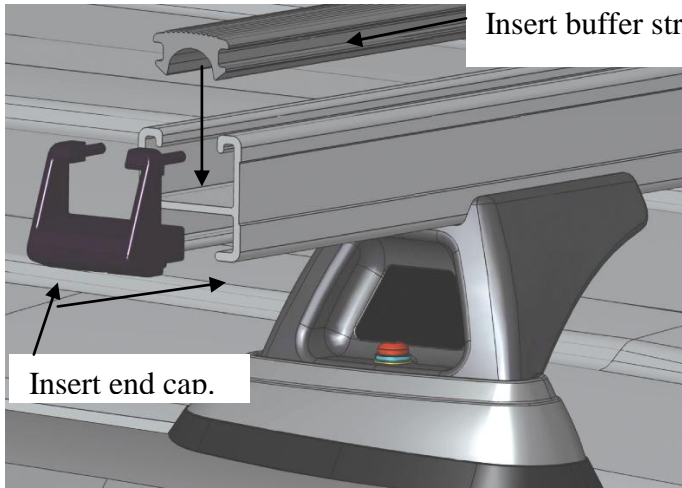
**Check that the channel nut is located across the crossbar.**

Recommended tightening torque 5N/m.



Channel nut across the crossbar.

**16: Check that the channel nut is located across the crossbar.**



Insert buffer strip.

Insert end cap.

**17: Insert the crossbar rubber buffer strip into the top of the bar.**

Insert the end caps into the ends of the crossbar, a rubber mallet may be required to fit the end caps.

When removing the heavy-duty crossbars, unscrew the attachment screws and remove the crossbars. The mounting pads remain attached to the roof.

Refer the separate instruction for fitting the mounting pad covers.

## **Important information:**

**Maximum carrying capacity – 3 crossbars 150Kgs.**

### **Removing the Crossbar Assembly:**

Insert the security Allen key into the head of the M6 security screw and remove the screw. The mounting pads can remain attached to the vehicle. Install cover plates onto the mounting pads using the M6 crossbar attachment screws. Do not remove the mounting legs from the crossbars. Store crossbars and hardware in a safe place.

### **Refitting the crossbar assembly:**

To refit the crossbar assemblies, place the crossbars onto the mounting pads in their preset positions. Insert the M6 screw assemblies as per the instructions, using the security Allen key tighten the screw as recommended in instructions.

## **Important Information:**

### **Recommendations.**

Please refer to the vehicle manufactures operating manual for the maximum roof load rating.

It is essential that all bolts and screws connections are checked after driving a short distance when first install your Rhino-Rack crossbars. Bolt and screw connections should be rechecked again at regular intervals (probably once a week is enough depending on road conditions, usage, load and distances traveled). You should also check the crossbars each time they are refitted.

Crossbars and accessories should be cleaned and all screw threads lubricated at regular intervals.

Rhino-Rack offers a lifetime warranty to the original purchaser of the Rhino-Rack roof rack system and accessories.

Rhino-Rack cannot be held responsible for incorrect mounting of the roof rack system or for usage that exceeds vehicle and production tolerances.

Make sure to fasten your load securely. Please ensure that all loads are evenly distributed and that the centre of gravity is kept as low as possible, use only non-stretch fastening ropes and straps.

### **SENSITIVITY TO CROSSWINDS, BEHAVIOUR IN CURVES AND BRAKING:**

The handling characteristics of the vehicle change when you transport a load on the roof. For safety reasons we recommend you exercise extreme care when transporting wind resisting loads. Special consideration must be taken into account when braking.

### **PLEASE REMOVE CROSSBARS WHEN PUTTING THE VEHICLE THROUGH AN AUTOMATIC CAR WASH.**

### **LOAD RATINGS:**

The vehicle manufactures recommended load rating is the maximum permissible load per pair of bars ( include the weight of the roof racks 5Kg). When roof bars are to be used in extreme off-road conditions, build a safety factor 1.5 into this maximum load limit. Although the roof racks are tested and approved to AS1235-2000, Australian road conditions can be much more rigorous.

### **NOTE FOR FITTERS AND DELALERS:**

It is your responsibility to ensure instructions are give to the end user or client.

Rhino-Rack  
3 Pike Street, Rydalmere,  
NSW, 2116, Australia.  
(Ph) +61 2 9638 4744 (Fax) +61 2 9638 4822.

Document No: RR167  
Prepared By: Alan Marshall.  
Authorised By: Chris Murty.

Issue: 03  
Issue date: 27/03/2013.

These instructions remain the property of Rhino-Rack Australia Pty Ltd and may not be used or changed for any other purpose than intended.