



RHINO-RACK

Citroen DS 3 Ditch Mount (RDM01).

Important: Please read these instructions carefully prior to installation. Please refer to your fitting instruction to ensure that the Roof Rack System is installed in the correct location. Check the contents of kit before commencing fitment and report any discrepancies. Place these instructions in the vehicle's glove box after installation is complete.

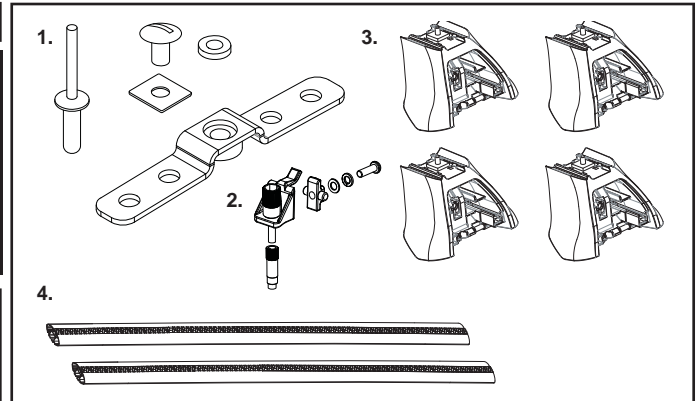
- 1. Check Part No./Kit is correct
- 2. Read through instruction before installing
- 3. Fit roof rack accessory
- 4. Check and recheck all fasteners are secure

Parts List

Item	Components	Qty	Part No.
1	Channel Mount Kit	1	RDM01
2	Fixed Point Kit	1	DK384
3	Leg Kit	1	RLKVA
4	Vortex Crossbar	2	VA118B/S
5	Instructions	1	R1073

Tools Required:

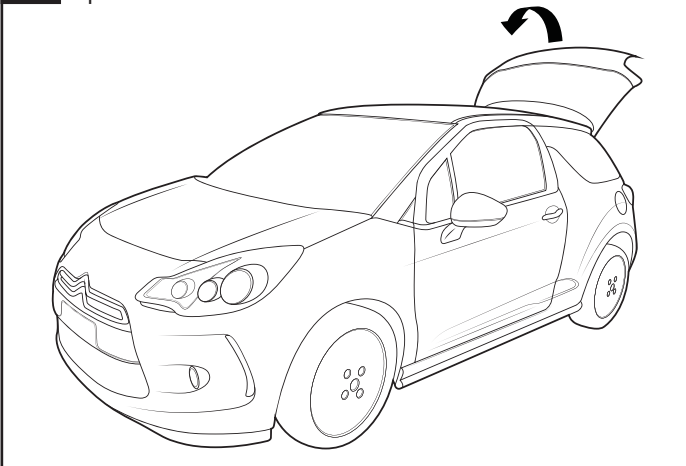
- 1. Measuring Tape.
- 2. Drill.
- 3. 5+12mm Drill Bit.
- 4. Drill Stop.
- 5. Flat Blade Screwdriver.
- 6. Cold Galvanising Paint.
- 7. Cotton Buds.
- 8. Pneumatic Rivet Gun.
- 9. Hole Punch.
- 10. Dremel.
- 11. Marker



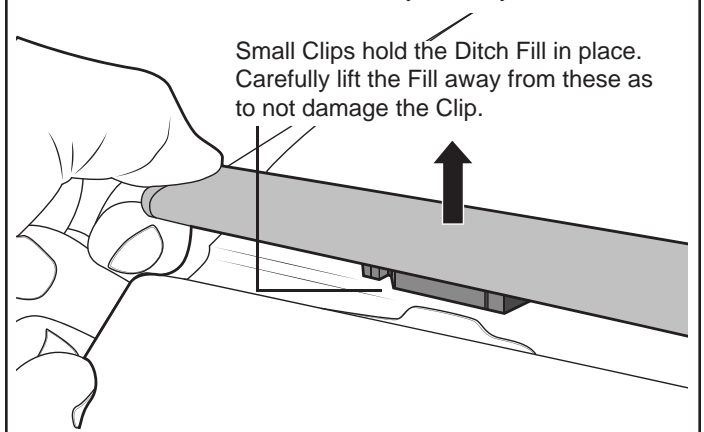
Note: For RS Crossbar fitments use a front bar length of 935mm and a rear of 891mm.

Instructions

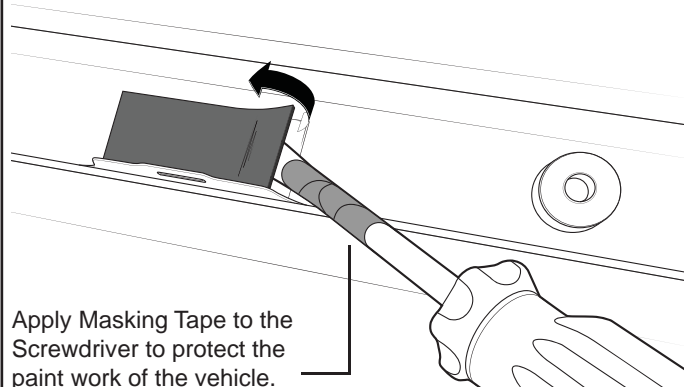
1 Open the rear hatch of the vehicle.



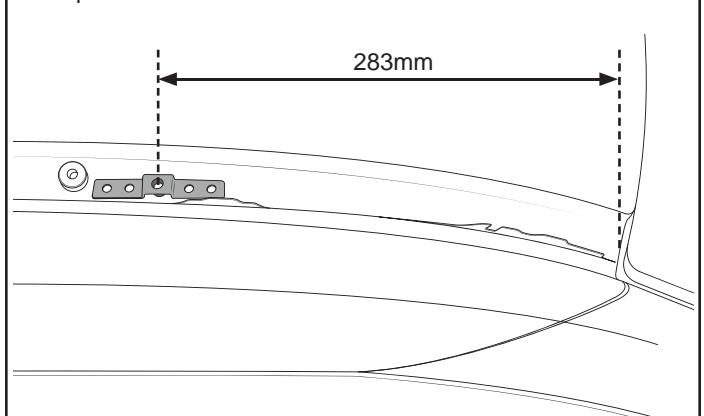
2 At the rear of the vehicle locate the Ditch Fill. Hook a hand under the Fill and carefully lift away from the Ditch.



3 With a Flat Blade Screwdriver, carefully remove the Foam Pads from the Roof Ditch as shown. Apply Masking Tape to the Screwdriver to protect the paint work of the vehicle.



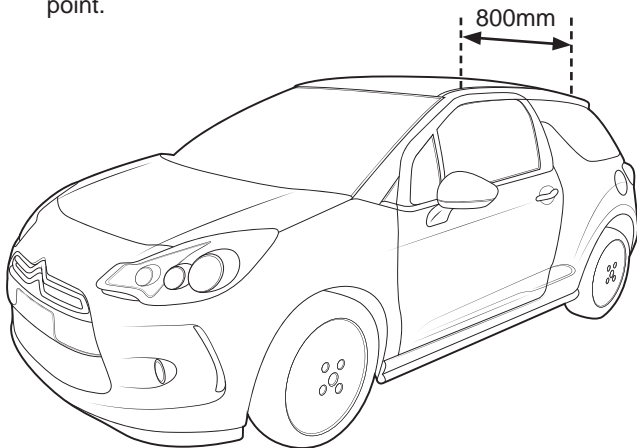
4 Measure back from the Front Windshield 283mm backward into the Ditch. Place a Ditch Bracket at this point as shown.



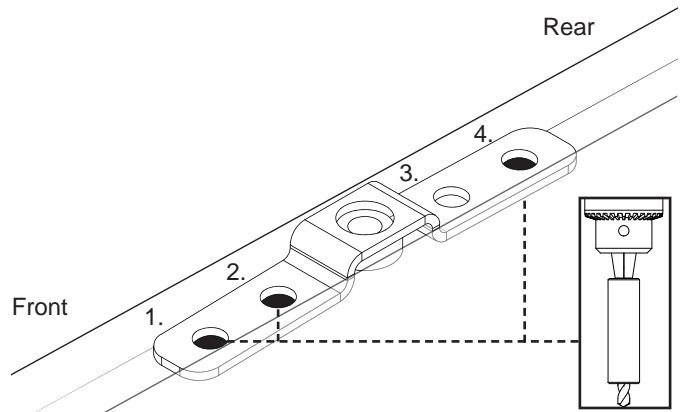


Citroen DS 3 Channel Mount (RDM01).

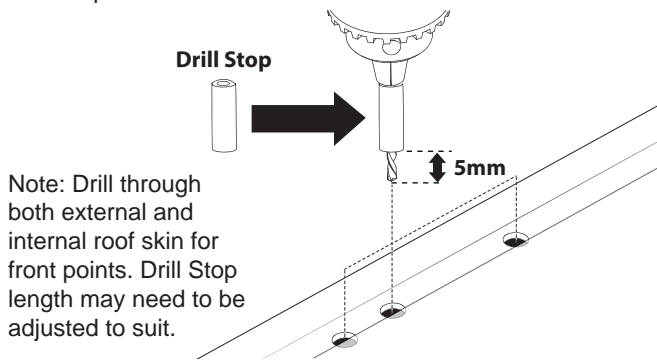
5 Measure back a further 800mm from the centre of the front Ditch Bracket. Place another Bracket centred at this point.



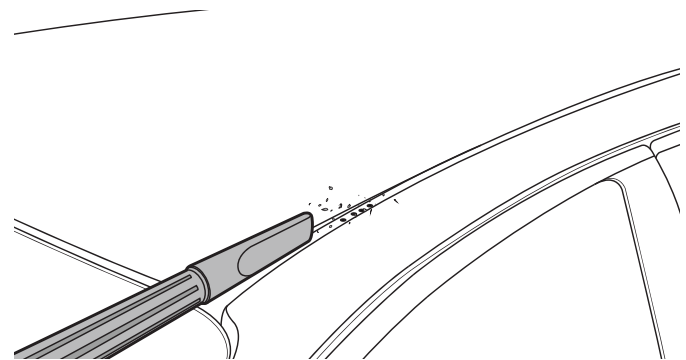
6 With a Drill Bit, mark the first, second and fourth Rivet Holes. Do not drill through the roof at this stage.



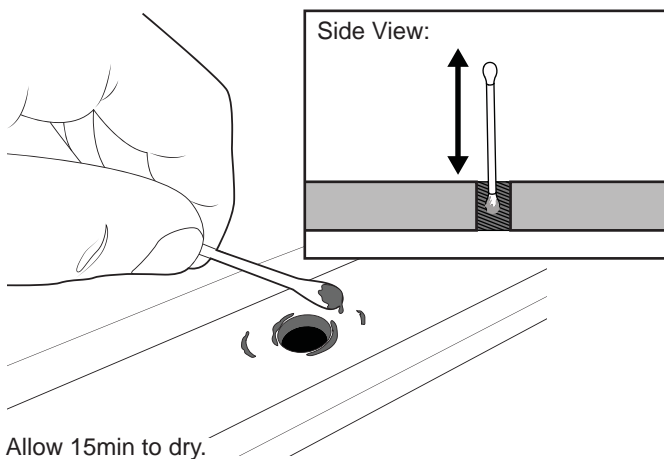
7 Drill out all marked holes with a 5mm Drill Bit. Use a Drill Stop set to 5mm-7mm.



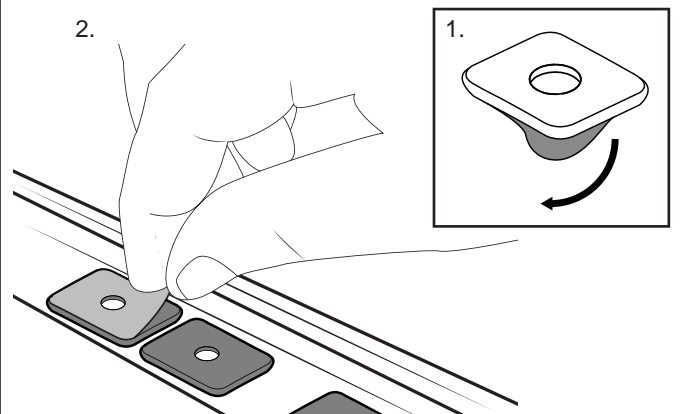
8 Vacuum all swarf from the roof ditch.



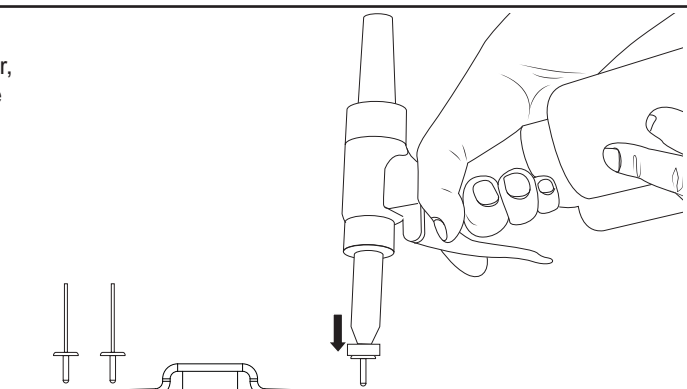
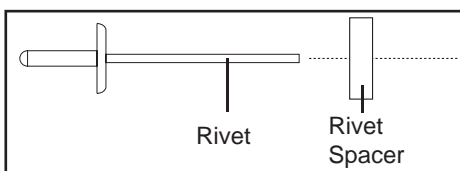
9 Using Cold Galvanising Paint, cover all drilled areas and any exposed body work.



10 Peel off the one side of backing tape on the Butyl Patches provided. Place these carefully over all holes drilled. Remove the top layer of backing tape as shown.



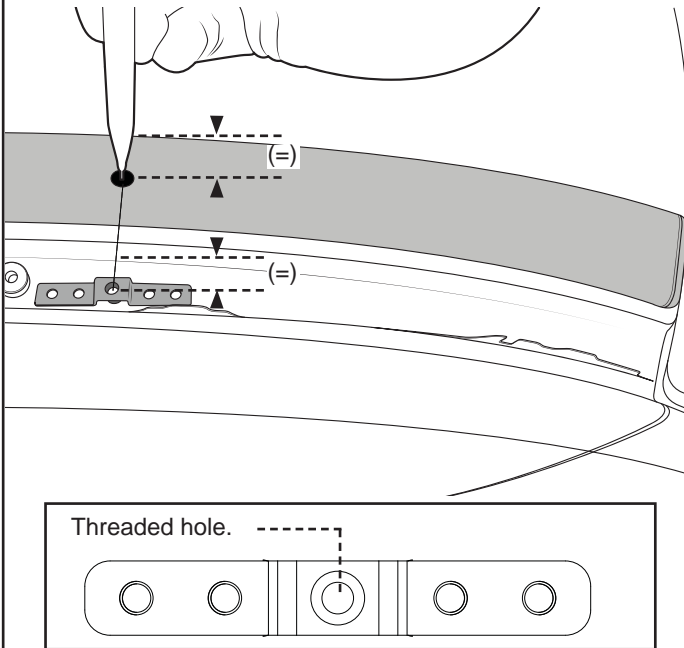
11 Press the Ditch Brackets into position over the drilled holes. Using a Pneumatic Rivet Gun and Rivet Spacer, fix the Brackets in place with Rivets provided. Be sure Brackets are aligned correctly.



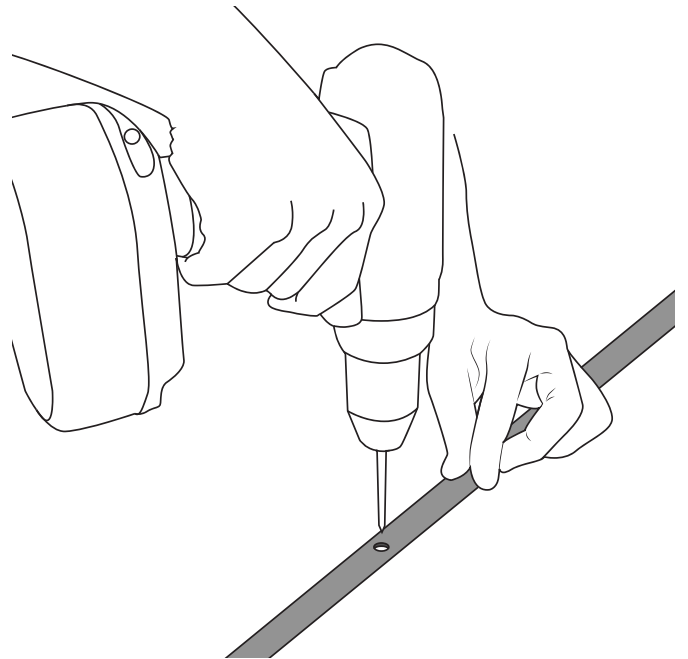


Citreon DS 3 Channel Mount (RDM01).

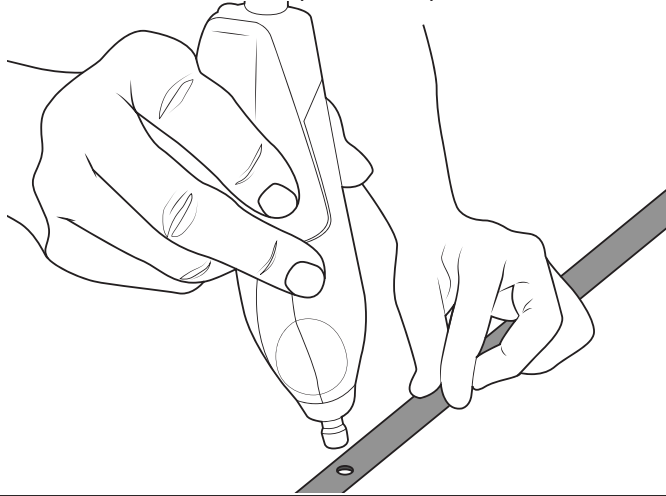
- 12** Place the Ditch Fill next to the Ditch. With a pen, mark the point where the Mould would sit over the thread on the Bracket.



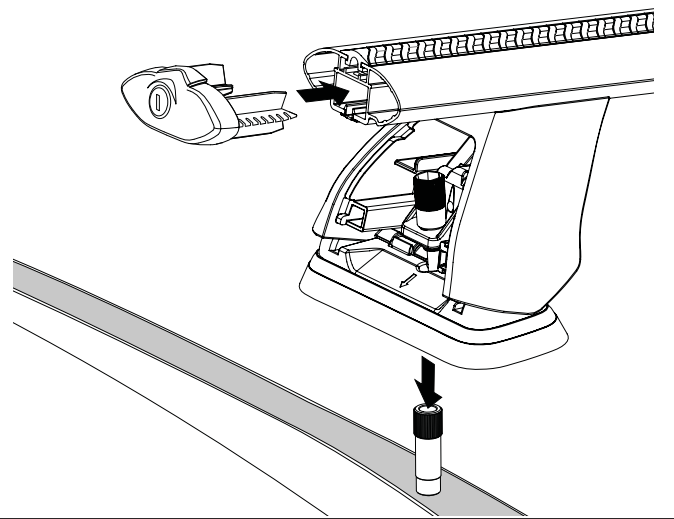
- 13** Use a 12mm Drill Bit and open up both references on each side of the Ditch Fill.



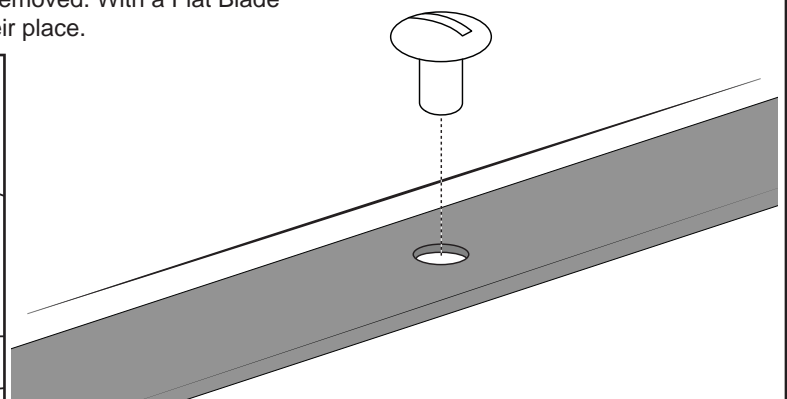
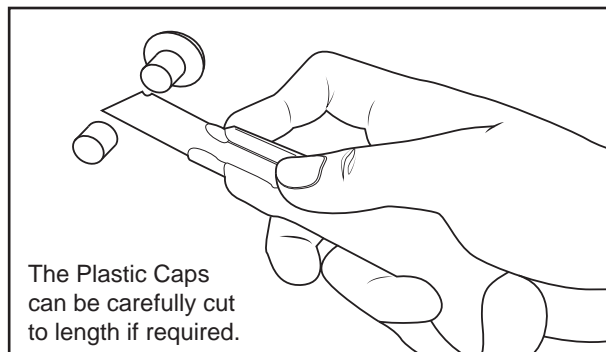
- 14** Using a Dremel and a fine sanding head, clean up the holes made in the previous step.



- 15** Attach Crossbars as per corresponding instructions.



- 16** Note when Crossbars are not in use, they can be removed. With a Flat Blade Screwdriver install the Plastic Caps provided in their place.



Rhino-Rack
3 Pike Street, Rydalmere,
NSW 2116, Australia.
(Ph) (02) 9638 4744
(Fax) (02) 9638 4822

Document No: R1073
Prepared By: Kayle Everett
Authorised By: Chris Murty

Fit Time: 45min
Issue No: 01
Issue Date: 01/07/16

These instructions remain the property of Rhino-Rack Australia Pty. Ltd. and may not be used or changed for any other purpose than intended.